

## EAGLE II — SUNSEEKER



**Судостроитель:** SUNSEEKER

**Год постройки:** 2007

**Модель:** Крейсер

**Цена:** ЦЕНА ЯХТЫ ПО ЗАПРОСУ

**Местонахождение:** United States

**Длина общая:** 62' 0" (18.90m)

**Ширина:** 16' 5" (5.00m)

**Мин. осадка:** 5' 1" (1.55m)

**Крейс. скорость:** 28 Kts. (32 MPH)

**Макс. скорость:** 34 Kts. (39 MPH)

Купить **Eagle II — SUNSEEKER** а также выбрать подходящую вам яхту из нашего каталога яхт вам поможет опытный яхтенный брокер Андрей Шестаков. На сегодняшний день компания **Shestakov Yacht Sales Inc.** имеет большое количество яхт в собственном списке продаж, а также тесно сотрудничает со всеми крупными яхтенными производителями по всему миру.

Для того чтобы купить яхту **Eagle II — SUNSEEKER** а также проконсультироваться по любому вопросу связанному с покупкой, продажей, чартером яхт позвоните по телефону **+7(918)465-66-44**.

# ОГЛАВЛЕНИЕ

---

ОГЛАВЛЕНИЕ	2
ХАРАКТЕРИСТИКИ	4
Обзор	4
Основная информация	4
Размеры	4
Скорость, вместимость и масса	5
Размещение	5
Корпус и палуба	5
Информация о двигателе	5
ПОДРОБНОЕ ОПИСАНИЕ	6
Main Features	6
Factory Installed Options	6
Additional Upgrades	7
US Specifications Included	7
Construction	8
Underwater Gear	8
Swim Platform	8
Aft Cockpit	8
Helm Console	9
Electronics	9
Main Deck Salon	10
Galley	10
Lower Deck Salon	10
Master Stateroom	10
VIP Stateroom	11
Starboard Guest Cabin	11
Electrical & Hydraulic Equipment	11
Exclusions	12

---

Исключения	12
Отказ от ответственности	12
ФОТОГРАФИИ	13
КОНТАКТЫ	18
Контактная информация	18
Телефоны	18
Время работы	18
Адрес	18

# ХАРАКТЕРИСТИКИ

## Обзор

Sleek styling, superb handling, impressive speeds and luxurious custom interior by IK Yacht Design, no detail has been overlooked on EAGLE II. Comfortable accommodations in 3 spacious staterooms, elegant upper salon opening onto an expansive aft deck, this yacht is a head turner.

Low hours and loaded with factory-installed options and upgrades, EAGLE II delivers.

Upgrades done in 2014:

- All hardwood floors redone
- New carpeting throughout
- New Smart TV on aft deck
- New AwlCraft paint from rub rails down
- Bottom redone

## Основная информация

**Тип судна:** Крейсер

**Подкатегория:** Sport Cruiser

**Модельный год:** 2007

**Год постройки:** 2007

**Страна:** United States

**Верх:** Electronic Sunroof

**Кубрик:** Да

## Размеры

**Длина общая:** 62' 0" (18.90m)

**Ширина:** 16' 5" (5.00m)

**Мин. осадка:** 5' 1" (1.55m)

## Скорость, вместимость и масса

---

**Крейс. скорость:** 28 Kts. (32 MPH)

**Макс. скорость:** 34 Kts. (39 MPH)

**Водоизмещение:** 63800 Pounds

**Вместимость воды:** 185 Gallons

**Объем топливного бака:** 792 Gallons

## Размещение

---

**Всего кают:** 3

**Всего ком. состава:** 2

**Каюты экипажа:** 1

**Койки экипажа:** 1

## Корпус и палуба

---

**Материал корпуса:** Fiberglass

**Дизайнер интерьера:** IK Yacht Design

## Информация о двигателе

---

**Двигатели:** 2

**Производитель:** MAN

**Модель:** V10 CRM

**Тип двигателя:** Inboard

**Тип топлива:** Diesel

# ПОДРОБНОЕ ОПИСАНИЕ

---

## Main Features

---

- Electric winch with deck and cockpit controls
- Hot and cold swim shower
- Swim ladder
- Full wet bar with ice maker, griddle, cool box and sink with hot and cold water
- Foot level courtesy lighting
- Radar, autopilot, electronic speedlog depth sounder, and VHF radio
- Hydraulic power steering
- Trim tabs
- Stainless steel sliding doors to cockpit
- Flatscreen televisions in all cabins
- Hi-fi DVD/CD surround system
- CD player for cockpit
- Ceramic cooktop
- Electric refrigerator and freezer
- Microwave/Grill
- Vacuum toilets and holding tank
- Hot and cold water system
- Automatic fire extinguishers
- Automatic bilge pumps
- AC shorepower/battery charger
- Slow speed generator with silent exhaust
- Fresh-water marina connection
- Teak bathing platform and steps
- Hydraulic lifting platform
- Antifouling

## Factory Installed Options

---

- Tropic Spec A/C
- Slow speed generator w/underwater silent exhaust and sound shield
- Teak cockpit
- Teak sole in Saloon
- Teak cabin stair treads from saloon to lower deck
- Bow thruster
- Single berth crew cabin with toilet
- Gaganeau Electric BBQ grill
- Hi gloss Teak table in cockpit
- Sunbrella canvas package

- Electric canopy for aft cockpit
- Dimmer switches on interior lighting
- Sharp Aquos 32" LCD TV- on deck saloon
- Bose Lifestyle 48 DVD/CD Surround System
- Besenzoni electric helm seat
- Miele dishwasher integrated Slimline G 818 SCVI
- Porthole in galley
- Sony CD/MP3/Radio w/4 Sony speakers in Master & VIP
- Sanshin Twin Beam remote controlled searchlight
- 2.4m Whip aerial for FM radio matching std VHF aerial on radar arch
- Carpet runners for saloon & galley
- Sony CDX-T70MX 6 disc CD/MP3 auto changer.
- 4 x waterproof 80 watt 2-way marine speakers with Sony XM-SD46X 4 channel amp. 10" Kenwood Subwoofer w/amp. Link from Sony to Bose system in saloon.
- Electric portable engine controls on wandering lead
- 6-zone Fire & bilge monitoring alarm system
- Lewmar C3 stern docking winches (P & S)
- Electrically operated side opening window at helm
- Washer/dryer under companionway steps
- Lewmar V5GD-24v anchor winch
- Low level lighting in cockpit & cockpit steps
- Underwater lights
- Glendinning Cablemaster
- 2 x 4' Fluorescent lights in engine room
- Diesel FuelMag conditioning system for engines & generator
- Water filter system for cold water supply
- Bilge pump manifold system w/pickups throughout boat
- General Ecology Nature Pure Ultrafine water purifier for icemaker
- Chocks on swim platform
- Spare propellers in garage

---

## Additional Upgrades

- Complete interior decoration by IK Yacht Design of Ft. Lauderdale
- Additional SS hand rails along length of hardtop
- 16" KOI custom glass sinks by Roberto Scira in Master and VIP heads
- Custom SS backlit vessel name by YachtSign

---

## US Specifications Included

- Air conditioning
- Upgraded generator

- US Coast Guard build regulations
- US specification appliances

## Construction

---

- Hand-laid GRP
- Gel coat including stripes
- Vinylester skin coat w/powderbound mat
- Stitched multi-axial reinforced single skin bottom
- Balsa cored hull topsides
- PVC foam cored deck and superstructure
- Hull stiffened w/longitudinal stringers supported by transverse bulkheads and floors

## Underwater Gear

---

- Direct shaft drive through half tunnels
- 4-Blade NAB bronze propellers
- Bronze P-brackets
- SS Temet 25 shafts
- Dripless shaft logs w/spare seal
- Hi-Performance bronze rudders and struts
- Seawater strainers-2 x main engines; 1 x generator
- Seacocks on all underwater fittings
- Full cathodic bonding system to zinc anodes
- SS hydraulic trim tabs 24v

## Swim Platform

---

- Teak-laid swim platform and steps
- Hot & cold water swimming shower
- Fresh water marine connection
- Dockside AC shore power connection
- SS swim ladder
- Hydraulic lifting platform

## Aft Cockpit

---

- Self Draining
- Stern safety door
- Cockpit speakers



- Wetbar w/hot & cold water, refrigerator, ice maker, bottle locker and griddle
- Upholstered seating around cockpit table w/stowage below
- Convertible sun bather
- Cockpit carpet
- 24v Overhead lights
- 24v Low-level courtesy lights
- Engine room access hatch
- Boat hook

## Helm Console

---

- Double stand/sit helm and co-pilot seats w/storage below
- Chart table
- Console w/burr type walnut fascia
- Hydraulic power steering
- Wooden rimmed steering wheel
- Full analog engine instrumentation
- Radar open scanner
- Auto pilot
- Electronic speed log
- Depth sounder
- Rudder indicator
- Water tank gauge
- Fuel tank gauge
- VHF radio
- Trim tab controls
- Single lever engine controls
- Compass
- Horn
- Windscreen wipers & washers
- Hand-held fire extinguisher

## Electronics

---

- KVH Trac Phone
- KVH Trac Vision
- Simrad Autopilot AP25
- Simrad Depth Sounder
- Nobeltech/Nauticom GP Chart Plotter/Nauticom 13" Color Monitor
- Furuno Nav NetVX2 Black Box/Nauticom 13" Color Monitor
- Camera video system connected to Nobeltec Chart Plotter and NavNet Nauticom Color Monitors; Monitors for stern, bow pulpit anchor and engine room

---

## Main Deck Salon

---

- Large dining settee w/folding table
- Under settee storage
- Flatscreen TV
- DVD/CD hi-fi surround system
- Storage cabinets
- Carpet
- 24v Overhead halogen lighting
- SS sliding door to cockpit
- AC/DC control panels
- Generator controls
- Hand-held fire extinguisher
- Scatter cushions

---

## Galley

---

- Sink and drainer
- 2 Burner electric cooktop
- Refrigerator/freezer
- Microwave/Grill
- Hot & cold water
- Cabinet and drawer storage
- Drinks cupboard
- Hand-held fire extinguisher
- Opening porthole w/screen
- First aid kit

---

## Lower Deck Salon

---

- Dining settee w/table
- Overhead cupboards
- Fitted carpet
- 24v Halogen overhead lighting
- Hand-held fire extinguisher
- Opening portholes w/screens and curtains
- Scatter cushions

---

## Master Stateroom

---

- Double berth

- Flatscreen TV
- Cabinet and drawer storage
- Nightstands
- Walk in closet
- Outboard shelving
- 24v Halogen overhead lighting
- 2 x Large opening portholes w/screens & curtains
- 4 x fixed portholes w/curtains
- Fitted carpet
- En Suite head w/shower

---

## VIP Stateroom

---

- Double berth w/storage below
- Drawer in base end of berth
- Overhead bedside cupboards
- Outboard shelving
- Flat Screen TV
- 2 x 24v reading lights
- Hanging locker w/mirrored door
- Opening deck hatch with screen
- Fitted carpeting
- En Suite head w/shower

---

## Starboard Guest Cabin

---

- 2 x Twin Pullman berths
- Hanging locker
- Fitted carpeting
- Share VIP head and shower

---

## Electrical & Hydraulic Equipment

---

- Slow speed generator w/underwater silent exhaust and sound shield
- Galvanic isolator
- Alternator split charging system
- Remote battery switches controlled from locker in cockpit
- 24v and 12v DC electrical system w/full circuit breaker protection
- 6 x 24v circuit engine batteries
- 4 x 24v circuit house batteries
- 2 x 12v circuit generator batteries

- 24v Battery charger
- 12v Battery charger
- Water heater
- AC sockets throughout boat
- 24v Hand light and cable
- Aluminum fresh water tank w/electric sending unit
- 24v Fresh water pressure system
- Hydraulic power steering engine driven pump
- 24v Hydraulic power pack for trim tabs and platform

---

## Exclusions

---

- Owner's personal effects

---

## Исключения

---

При продаже яхты исключаются личные вещи владельца.

---

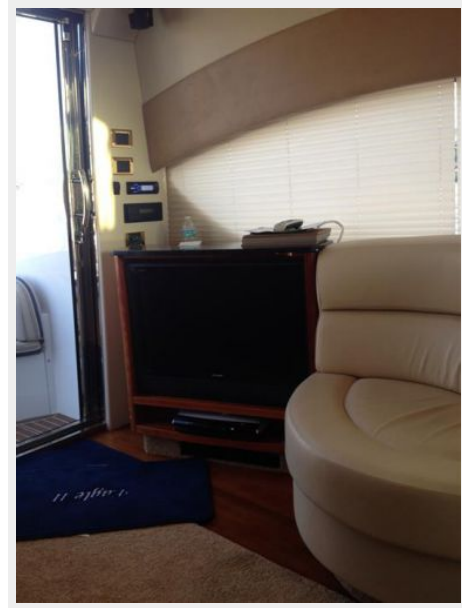
## Отказ от ответственности

---

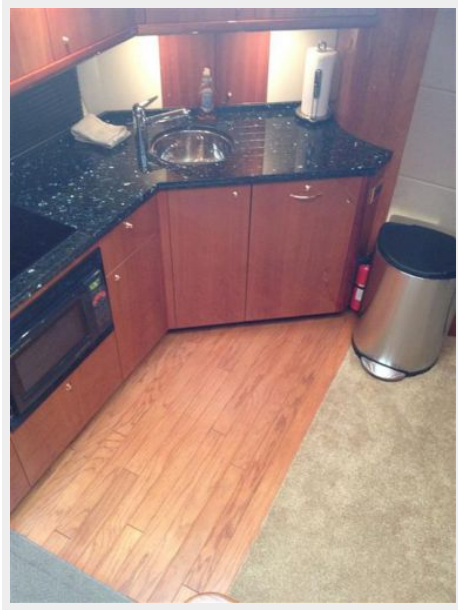
Компания предоставляет описание судна или яхты добросовестно, но не может гарантировать точность этой информации, а также не ручается за техническое состояние. Покупатель должен проинструктировать своих агентов или оценщиков исследовать представленную информацию более подробно, по собственному желанию. Продажа судна или яхты, изменение цены или снятие с продажи будет происходить без предварительного уведомления.

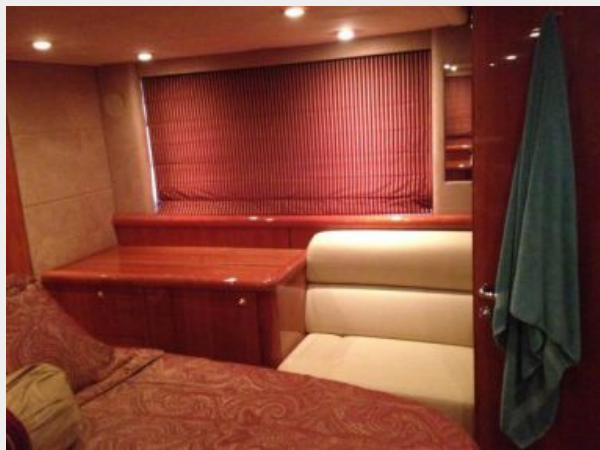
# ФОТОГРАФИИ



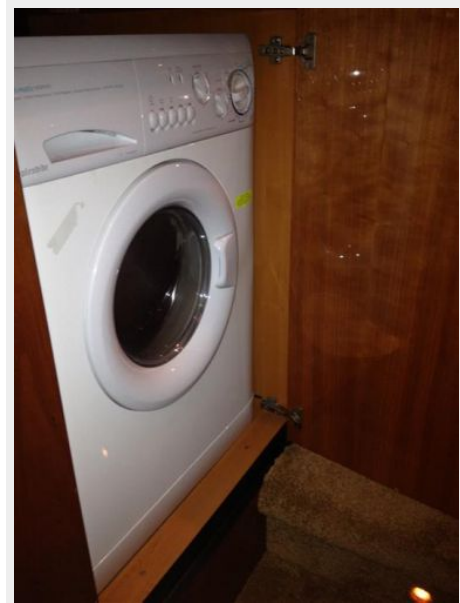












# КОНТАКТЫ

---

Андрей Шестаков (Andrey Shestakov) – ведущий яхтенный брокер отдела продаж яхт и судов компании Shestakov Yacht Sales Inc. Официальный представитель Shestakov Yacht Sales Inc. для русскоговорящих клиентов в центральном офисе компании в Майами/Форт Лодердейл/Флорида/США.

## Контактная информация

---

Email: [andrey@shestakovyachtsales.com](mailto:andrey@shestakovyachtsales.com)

Web: [shestakovyachtsales.com](http://shestakovyachtsales.com)

## Телефоны

---

Краснодарский край: **+7(918)465-66-44**

США, Майами, Флорида: **+1(954)274-4435**

## Время работы

---

Понедельник – Суббота: **9:00 - 21:00**  
EDT

Воскресенье: **Закрето**

## Адрес

---



Harbour Towne Marina, 850 NE 3rd St,  
STE 213, Dania, FL 33004