

KINGFISHER — GRAND BANKS



Builder: GRAND BANKS

Year Built: 1977

Model: Trawler

Price: PRICE ON APPLICATION

Location: United States

LOA: 42' 0" (12.80m)

Beam: 13' 7" (4.14m)

Max Draft: 4' 2" (1.27m)

Cruise Speed: 10 Kts. (12 MPH)

Our experienced yacht broker, Andrey Shestakov, will help you choose and buy a yacht that best suits your needs Kingfisher — GRAND BANKS from our catalogue. Presently, at Shestakov Yacht Sales Inc., we have a wide variety of yachts available on our sale's list. We also work in close contact with all the big yacht manufacturers from all over the world.

If you would like to buy a yacht Kingfisher — GRAND BANKS or would like help answering any questions concerning purchasing, selling or chartering a yacht, please call +1(954)274-4435

TABLE OF CONTENTS

TABLE OF CONTENTS	2
SPECIFICATIONS	4
Overview	4
Basic Information	4
Dimensions	4
Speed, Capacities and Weight	4
Accommodations	4
Hull and Deck Information	5
Engine Information	5
DETAILED INFORMATION	6
Salon	6
Galley	6
Aft Stateroom	6
Aft Head	7
Forward Stateroom	7
Lower Helm	7
Flybridge	8
Electronics	8
Electrical System	9
Engine Room	9
Deck	9
Hull	10
Miscellaneous	10
Exclusions	10
Disclaimer	10
PHOTOS	11
CONTACTS	18
Contact details	18

Telephones	18
Office hours	18
Address	18

SPECIFICATIONS

Overview

Here is an iconic Grand Banks 42. Over 1500 were built and probably no other single model has had extensive refurbishing done to them. Kingfisher, well known on the Great Lakes, has had over \$100,000 invested in the last three years. Call for details on all of the work.

Basic Information

Category: Trawler

Model Year: 1977

Year Built: 1977

Country: United States

Vessel Top: 2353

Fly Bridge: Yes

Dimensions

LOA: 42' 0" (12.80m)

Beam: 13' 7" (4.14m)

Max Draft: 4' 2" (1.27m)

MFG Length: 41' 10" (12.75m)

Speed, Capacities and Weight

Cruise Speed: 10 Kts. (12 MPH)

Cruise Speed RPM: 1800 Kts.

Displacement: 34000 Pounds

Fuel Capacity: 600 Gallons

Accommodations

Total Cabins: 2

Total Berths: 4

Sleeps: 5

Total Heads: 1

Hull and Deck Information

Hull Material: Fiberglass

Engine Information

Engines: 2

Manufacturer: Ford Lehman

Model: 120HP

Engine Type: Inboard

Fuel Type: Diesel

DETAILED INFORMATION

Salon

Updated Vizio TV with Direct TV receiver

Sony Bluray DVD player

New AC (16,000 BTU)

Custom book cabinet with built-in stainless steel ice maker (2014)

Teak blinds

L-Shaped settee with custom folding table that adjust to height

2nd of two stainless steel drawer refrigerators

Parquet flooring replaced/refinished with Sikkens

Engine compartment access hatch with ladder and hand rail

Extensive storage in drawers, cabinets, and under settee

Galley

New Vitrofrigo stainless steel double drawer refrigerator (2014)

New Vitrofrigo stainless steel double drawer freezer (2014)

New stainless steel Force10 Range (2014)

Sub-floor under refrigerator/freezer replaced with Starboard and drains installed

New Microwave (2013)

3-burner stove with oven

Aft Stateroom

New HMC custom mattresses (2014)

New AC (10000 BTU) (2013)

(2) New 12V fans

New comforters and custom fitted mattress pads

Queen berth to starboard

Single to port

Aft Head

New shower sump pump

Parque floor

Vacuflush head

Forward Stateroom

V-berth

New AC (6000 BTU)

(2) New 12V fans

Abundant storage

Lower Helm

New Stidd Helm seat (2013)

New Gobius external tank monitors for holding, water and fuel (2013)

New 12V fans with light (red&white) (2)

Chart locker compartment

Ritchie compass

Guest remote spotlight

Full Stewart Warner engine instrumentation

Morse controls

Original wood wheel

Full tank level instrumentation

Mastervolt battery monitor

Flybridge

Magna barbeque with cover

Two folding deck chairs

Chart locker to port of helm

Trinka dinghy complete with sails, oars, and outboard

Davit crane, electric lift

Chest refrigerator

Locking outboard mount

Electronics

New Garmin 6212 Plotter at lower helm

New Garmin GC10 camera on mast and facing aft

New stereo with separate tweeters, mid-range subwoofer on flybridge (JL Audio) with USB head unit and separate amp

New cell phone booster and antenna

KVH SAT TV w/ Direct TV receiver

Raymarine RL8DC Radar

Sony BluRay DVD player

HDTV Antenna

Raytheon Raypilot

ICOM VHF Radio

Raymaine Tridata

HDTV Antenna

Raytheon Raypilot

ICOM VHF Radio

Raymaine Tridata

Electrical System

Three new AC units with reverse cycle heat

4-30 amp power cords with nylon covers

Battery parallel

Northern Lights Generator with sound shield

New house battery bank in custom box

New Blue Sea DC and AC panel

New Blue Sea remote battery switches at helm

New Balmar 120 amp alternator

New Balmar Spike protector

New Mastervolt battery charger/inverter with remote display

New Blue Sea 7700 solenoids Generator

Engine Room

New holding tank - with increase capacity

Custom aluminum ladder & handle with hatch prop for safe and secure passage underway

Teak grate over bilge

Custom battery box with vent

Gobius tank monitor system

Raritan water heater

Complete list of engine room available to interested buyers

Deck

Fore cabin hatch custom fabricated

All exterior teak refinish, 2013-14

Tracy boarding steps with railing, both sides, adjust for height with tide

Yakima bike rack on custom mount

Ideal windlass plow anchor on pulpit

Hull

Bottom soda blasted, stripped, filled, faired with 3 coats of barrier and 3 coats of paint

Miscellaneous

Danforth anchor

Waterhose

Cable TV cord

Magna barbecue with cover

Coast Guard compliant with flares and life jackets aboard

All manuals original and new aboard

Fitted sheets, top sheets and pillow case cleaned and aboard

Original aft cushions stored off boat and included

Exclusions

Owner's personal belongings.

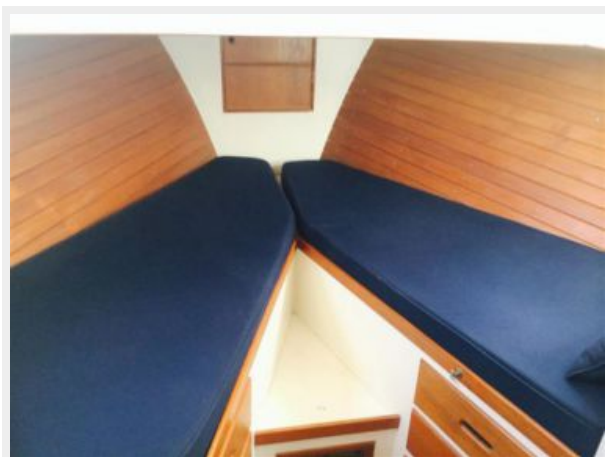
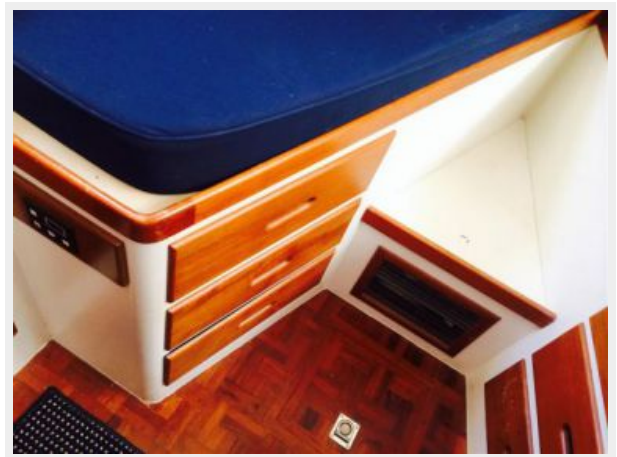
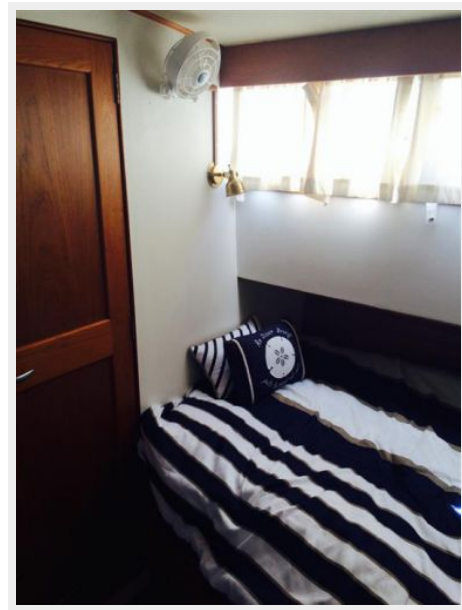
Disclaimer

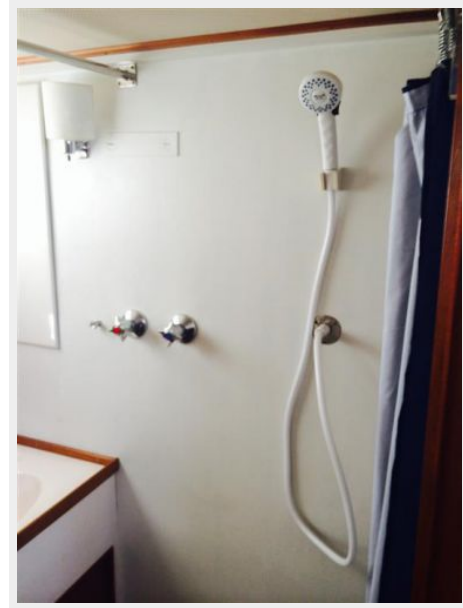
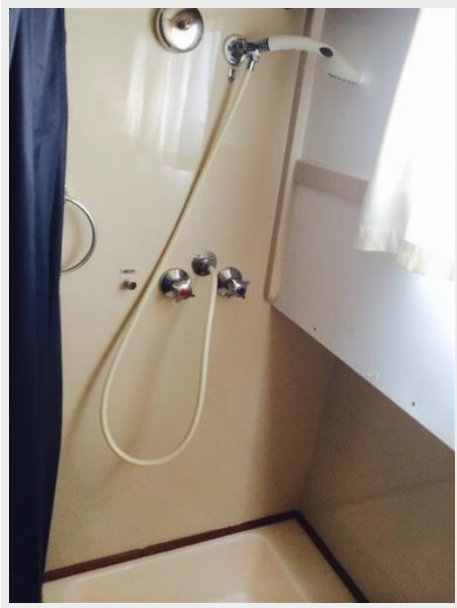
The Company offers the details of this vessel or yacht in good faith but cannot guarantee or warrant the accuracy of this information nor warrant the condition of the vessel. A buyer should instruct his representatives, agents, or his surveyors, to investigate such details as the buyer desires validated. This vessel or yacht is offered subject to prior sale, price change, or withdrawal without notice.

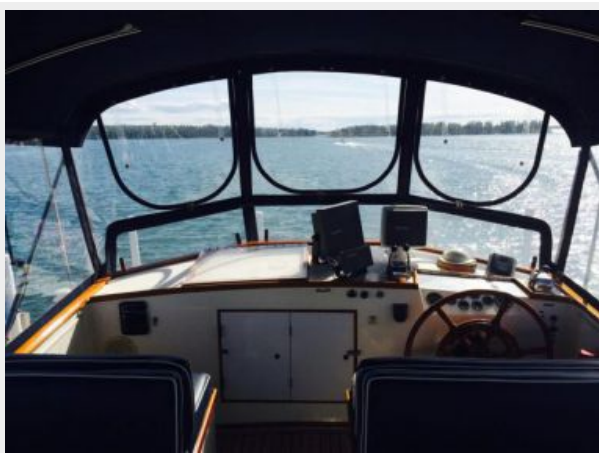
PHOTOS

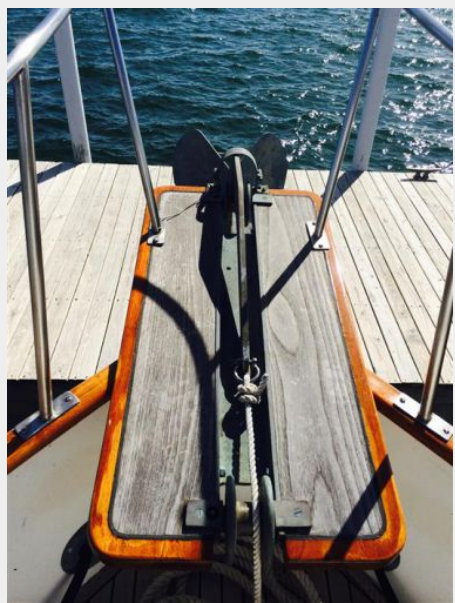














CONTACTS

Andrey Shestakov, leading yacht broker of the sales department of Shestakov Yacht Sales Inc. Shestakov Yacht Sales Inc., the official representative of the Miami/Fort Lauderdale FL headquarters.

Contact details

Email: andrey@shestakovyachtsales.com

Web: shestakovyachtsales.com/en/

Telephones

USA: +1(954)274-4435

Office hours

Monday – Saturday: **9:00 - 21:00** EDT

Sunday: **closed**

Address



Harbour Towne Marina, 850 NE 3rd St,
STE 213, Dania, FL 33004