

## LINNEA — BRISTOL YACHTS



**Судостроитель:** BRISTOL YACHTS

**Год постройки:** 1982

**Модель:** Sloop

**Цена:** ЦЕНА ЯХТЫ ПО ЗАПРОСУ

**Местонахождение:** United States

**Длина общая:** 35' 6" (10.82m)

**Ширина:** 10' 10" (3.30m)

**Мин. осадка:** 3' 9" (1.14m)

**Макс. осадка:** 7' 6" (2.29m)

Купить **LINNEA — BRISTOL YACHTS** а также выбрать подходящую вам яхту из нашего каталога яхт вам поможет опытный яхтенный брокер Андрей Шестаков. На сегодняшний день компания **Shestakov Yacht Sales Inc.** имеет большое количество яхт в собственном списке продаж, а также тесно сотрудничает со всеми крупными яхтенными производителями по всему миру.

Для того чтобы купить яхту **LINNEA — BRISTOL YACHTS** а также проконсультироваться по любому вопросу связанному с покупкой, продажей, чартером яхт позвоните по телефону **+7(918)465-66-44**.

# ОГЛАВЛЕНИЕ

ОГЛАВЛЕНИЕ	2
ХАРАКТЕРИСТИКИ	4
Обзор	4
Основная информация	4
Размеры	4
Скорость, вместимость и масса	4
Размещение	5
Корпус и палуба	5
Информация о двигателе	5
ПОДРОБНОЕ ОПИСАНИЕ	6
REMARKS	6
ACCOMMODATIONS and LAYOUT	6
ELECTRONICS and NAVIGATION EQUIPMENT	7
ELECTRICAL SYSTEM	7
DECK and HULL	7
SAILS and RIGGING	8
ENGINE and MECHANICAL EQUIPMENT	8
ADDITIONAL EQUIPMENT	9
EXCLUSIONS	9
Исключения	9
Отказ от ответственности	10
ФОТОГРАФИИ	11
Main Salon	11
Port Settee	11
Nav Station	11
Nav Station and Galley	11
Galley	11
Double Sink	11

---

Oven with Stove	12
V-berth	12
Head	12
Deck	12
Deck Looking Aft	13
Cockpit	13
Companionway	13
Helm	13
Stern	13
Engine	13
<b>КОНТАКТЫ</b>	<b>14</b>
Контактная информация	14
Телефоны	14
Время работы	14
Адрес	14

# ХАРАКТЕРИСТИКИ

## Обзор

Bristol 35.5s are very popular for good reason -- they are extremely well built, have excellent sailing characteristics, very comfortable accommodations, and above all, beautiful lines! LINNEA is the highly sought after keel/centerboard version of this classic which provides a minimum of draft of only 3'-9" with the board up when trying to find that perfect anchorage. LINNEA has been lavished with care and given more than what she needed on an annual basis, making her one of the best Bristol 35.5s available. She has been maintained by a very reputable boatyard and it shows. Recent upgrades include a new fuel tank, redone Awlgrip topsides, batteries and electronics. LINNEA is seriously for sale only due to the fact that her loving owner has moved to a larger sailboat.

## Основная информация

<b>Тип судна:</b> Sloop	<b>Подкатегория:</b> Cruising/Racing Sailboat
<b>Модельный год:</b> 1982	<b>Год постройки:</b> 1982
<b>Страна:</b> United States	<b>Верх:</b> Dodger
<b>Кубрик:</b> Да	

## Размеры

<b>Длина общая:</b> 35' 6" (10.82m)	<b>Длина по ватерлинии:</b> 27' 6" (8.38m)
<b>Ширина:</b> 10' 10" (3.30m)	<b>Мин. осадка:</b> 3' 9" (1.14m)
<b>Макс. осадка:</b> 7' 6" (2.29m)	<b>Длина привального бруса:</b> 35' 6" (10.82m)

## Скорость, вместимость и масса

<b>Водоизмещение:</b> 15000 Pounds	<b>Вместимость воды:</b> 110 Gallons
<b>Объем топливного бака:</b> 36 Gallons	

## Размещение

---

Всего кают: 1

Всего коек: 4

Спальные места: 7

Всего ком. состава: 1

## Корпус и палуба

---

Материал корпуса: Fiberglass

Материал палубы: Fiberglass

Комплектация корпуса: Centerboard

Цвет корпуса: Blue

Отделка корпуса: Fiberglass

Дизайнер корпуса: Ted Hood

## Информация о двигателе

---

Двигатели: 1

Производитель: Universal

Тип двигателя: Inboard

Тип топлива: Diesel

---

# ПОДРОБНОЕ ОПИСАНИЕ

---

## REMARKS

---

Bristol 35.5s are very popular for good reason -- they are extremely well built, have excellent sailing characteristics, very comfortable accommodations, and above all, beautiful lines! LINNEA is the highly sought after keel/centerboard version of this classic which provides a minimum of draft of only 3'-9" with the board up when trying to find that perfect anchorage. LINNEA has been lavished with care and given more than what she needed on an annual basis, making her one of the best Bristol 35.5s available. She has been maintained by a very reputable boatyard and it shows. Recent upgrades include a new fuel tank, redone Awlgrip topsides, batteries and electronics. LINNEA is seriously for sale only due to the fact that her loving owner has moved to a larger sailboat. She is fully commissioned, equipped and ready to cruise.

## ACCOMMODATIONS and LAYOUT

---

The FORWARD CABIN has a V-berth with filler cushion that creates a large and comfortable sleeping area for two. Brass LED reading lamps are over each berth. Outboard above the berths are spacious storage compartments with caned sliding doors. To starboard is a hanging locker and an opening screened port above it. To port is a private entry to the head. Ventilation and light is also provided by a large tinted hatch.

Aft and to port is an ENCLOSED HEAD featuring an updated Raritan head with holding tank and Y-valve, sink with hot and cold pressure water/shower and teak towel/soap/toothbrush racks. The shower area is fully enclosed by a shower curtain on an overhead track and is well ventilated by an opening port and a large overhead dorade vent. Two storage/linen lockers are outboard. A hanging locker is opposite the head to starboard.

The MAIN SALON is finished in mahogany with hand-rubbed satin varnish. The same finish is used on the teak table and ash cabin sole. Standing headroom is approximately 6'-4" with sleeping accommodations for up to seven. There are pull-out double berths/settees to port and starboard and a bulkhead-mounted solid mahogany dining table with hinged leaves. Outboard of the settees are storage lockers with shelves above; below the settees are six additional lockers. All cushions are 5" thick foam covered with dark blue corduroy fabric. Bulkhead and overhead lighting consists of brass LED lights, all of which have dimmers. Excellent ventilation is provided via two large dorade vents, two opening screened ports, a second overhead hatch and the companionway.

The NAVIGATION STATION is to port and combines a seakindly quarterberth with a full-sized chart table. Ample storage is provided under the lift-top table and outboard shelves and locker.

The GALLEY is to starboard and features a rare (in Bristols of this vintage) but highly sought after forward-facing double stainless sink. Hot and cold pressure water, a fresh water foot pump, a

built-in soap dispenser, a large under-counter food locker and a custom drop-down teak table forward of the sink add to the convenience of the galley. Aft is a Shipmate gimbaled 3-burner propane stove with oven, topped with retractable filler for extra counter space. Outboard are storage shelves with attractive caned sliding doors. The ice box is large and well insulated.

The companionway steps and engine access have been rebuilt to provide more space and easier access to the engine, using the same specifications as in the newer 35.5 models.

---

## **ELECTRONICS and NAVIGATION EQUIPMENT**

---

- Garmin chart plotter/radar/GPS (new 2009)
- Datamarine digital knot/wind/depth
- Ritchie SP5 compass
- Apelco VXL 5120 VHF radio
- Raytheon ST4000+ autopilot w/digital remote
- Panasonic AM/FM/CD stereo with speakers in cockpit and down below

---

## **ELECTRICAL SYSTEM**

---

- 12v and 110v systems with breaker panel
- House and start batteries (new 2014)
- Powerline battery isolator
- Link 10 battery monitor
- 50' shore power cord
- GFCI AC outlets
- 12v outlets in main salon, nav station, cockpit
- Overhead brass LED dome lights (new 2012) with dimmers in main salon and galley
- Brass LED reading lights (new 2012) in V-berth and main salon (latter with dimmers)
- Chrome LED light (new 2012) over mirror in head
- Aqua Signal chart light with dimmer
- Combination steaming/foredeck light
- Bass solenoid propane shutoff

---

## **DECK and HULL**

---

- Hull color is blue (re-Awlgripped 2011)
- High-gloss varnished bright work (two coats annually)
- (4) Screened opening ports
- (3) Teak dorades with stainless steel cowl vents
- Stainless steel bow and stern pulpits with double life lines (new 2011) and opening gates, starboard and port

- Anchor well on foredeck with stainless steel cowl vent
- 35 lb. CQR anchor with 25' chain and nylon rode on bow anchor roller
- Dedicated propane locker
- White Sunbrella dodger (new 2011), wheel cover, fleece-lined bags for companionway boards, sun awning
- Cockpit table and tray tables
- Danforth lunch hook w/chain and rode
- Cockpit shower system (new 2011)
- Fold-up transom ladder with teak treads
- Keel/Centerboard min draft of 3'-9" and max of 7'-6" with board down
- Rebuilt centerboard trunk (2012)

## **SAILS and RIGGING**

---

- Harken roller furler for headsail (new 2010)
- Doyle fully-battened mainsail with reef points (new 2003)
- Doyle 130% genoa (new 2003)
- Doyle cruising spinnaker with dousing sleeve (new 2006)
- Spinnaker pole and gear
- (2) Lewmar #44 self-tailing primary winches
- (2) Lewmar #40 secondary winches
- (4) Lewmar reefing and halyard winches
- Hydraulic backstay adjuster
- Inboard and outboard genoa tracks

## **ENGINE and MECHANICAL EQUIPMENT**

---

- Universal 24 hp diesel engine (approx. 1,500 hrs., fresh water cooled)
- PSS shaft seal (dripless stuffing box)
- 2-Blade propeller
- Fuel lines (new 2012)
- Dual Racor fuel filter system with vacuum gauge
- Edson steering wheel
- Raritan 6 gal. hot water tank with heat exchanger and 110v immersion heater
- Par diaphragm pressure water pump
- Fresh water filter system (new 2011)
- Par accumulator tank
- Whale galley foot pump
- Lovett shower sump pump (new 2011)
- Raritan PHII manual head with Y-valve to holding tank or overboard
- Whale holding tank pump plumbed with extra Y-valve and hose to bilge to provide backup manual bilge pump



- All hoses in head/holding tank system replaced (2012)
- Kempax manual bilge pump in cockpit
- Jabsco electric bilge pump with float switch
- Groco raw water strainer, tachometer, oil pressure and coolant temperature gauges

## **ADDITIONAL EQUIPMENT**

---

- White fitted cockpit cushions
- (6) Fenders
- Dock lines
- (4) Webbing jack lines
- (2) Wire jack lines in cockpit
- Lifesling (new 2013)
- Throw rope
- (6) Type II life jackets
- Teak outboard engine rail mount
- Emergency tiller
- Edson cockpit table
- (2) Edson teak tray tables for table
- (2) Screened companionway boards
- Masthead windex
- Rail-mount BBQ
- Mast Mate webbed mast steps
- Bosun's chair
- Boat hook
- Horn
- Bell
- Flares
- (3) Fire extinguishers
- Ensign w/teak staff
- Davis Echomaster radar reflector

## **EXCLUSIONS**

---

The owner's personal effects are excluded from the sale.

## **Исключения**

---

При продаже яхты исключаются личные вещи владельца.

## Отказ от ответственности

---

Компания предоставляет описание судна или яхты добросовестно, но не может гарантировать точность этой информации, а также не ручается за техническое состояние. Покупатель должен проинструктировать своих агентов или оценщиков исследовать представленную информацию более подробно, по собственному желанию. Продажа судна или яхты, изменение цены или снятие с продажи будет происходить без предварительного уведомления.

# ФОТОГРАФИИ

**Main Salon**



**Port Settee**



**Nav Station**



**Nav Station and Galley**



**Galley**



**Double Sink**



Oven with Stove



V-berth



Head



Deck



**Deck Looking Aft**



**Cockpit**



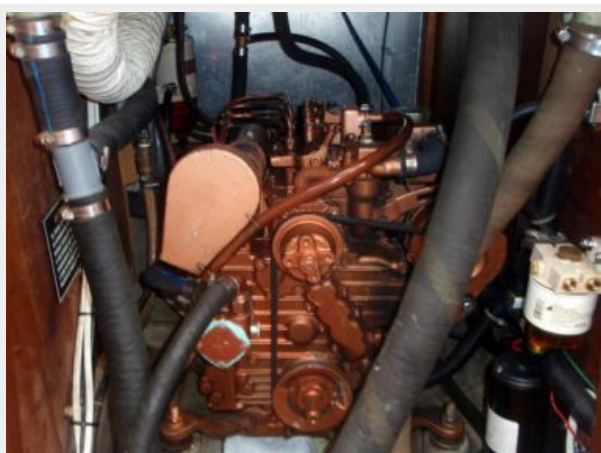
**Companionway**



**Helm**



**Engine**



**Stern**



# КОНТАКТЫ

---

Андрей Шестаков (Andrey Shestakov) – ведущий яхтенный брокер отдела продаж яхт и судов компании Shestakov Yacht Sales Inc. Официальный представитель Shestakov Yacht Sales Inc. для русскоговорящих клиентов в центральном офисе компании в Майами/Форт Лодердейл/Флорида/США.

## Контактная информация

---

Email: [andrey@shestakovyachtsales.com](mailto:andrey@shestakovyachtsales.com)

Web: [shestakovyachtsales.com](http://shestakovyachtsales.com)

## Телефоны

---

Краснодарский край: **+7(918)465-66-44**

США, Майами, Флорида: **+1(954)274-4435**

## Время работы

---

Понедельник – Суббота: **9:00 - 21:00**  
EDT

Воскресенье: **Закрито**

## Адрес

---



Harbour Towne Marina, 850 NE 3rd St,  
STE 213, Dania, FL 33004