

PENELOPE — GRAND BANKS



Судостроитель: GRAND BANKS

Год постройки: 2007

Модель: Моторная яхта

Цена: **ЦЕНА ЯХТЫ ПО ЗАПРОСУ**

Местонахождение: United States

Длина общая: 47' 0" (14.33m)

Ширина: 15' 1" (4.60m)

Крейс. скорость: 26 Kts. (30 MPH)

Купить **Penelope — GRAND BANKS** а также выбрать подходящую вам яхту из нашего каталога яхт вам поможет опытный яхтенный брокер Андрей Шестаков. На сегодняшний день компания **Shestakov Yacht Sales Inc.** имеет большое количество яхт в собственном списке продаж, а также тесно сотрудничает со всеми крупными яхтенными производителями по всему миру.

Для того чтобы купить яхту **Penelope — GRAND BANKS** а также проконсультироваться по любому вопросу связанному с покупкой, продажей, чартером яхт позвоните по телефону **+7(918)465-66-44**.

ОГЛАВЛЕНИЕ

ОГЛАВЛЕНИЕ	2
ХАРАКТЕРИСТИКИ	5
Основная информация	5
Размеры	5
Скорость, вместимость и масса	5
Размещение	5
Корпус и палуба	5
Информация о двигателе	5
ПОДРОБНОЕ ОПИСАНИЕ	6
Walkthrough	6
Исключения	12
Отказ от ответственности	12
ФОТОГРАФИИ	13
Mast Electronics	13
Brow	13
Bow	14
Bow	14
Deck Cleat	14
Salon/Dining	14
Salon Port	14
Salon	15
Galley	15
Galley	15
Galley Stove	16
Lower Helm	16
Lower Helm	16
Lower Helm	16
Companionway Stairs	17

Master Stateroom	17
Companionway	17
Master Port	17
Master Head Cabinet	18
Master Port Aft	18
Master Shower	18
Guest Stateroom	18
Guest Vanity	19
Guest Stateroom	19
Guest Head	19
Guest Shower	19
Cockpit Sink	20
Miele Grill	20
Aft Deck Access to Engine Room	20
Flybridge Settee Covers	20
Flybridge Seat Covers	21
Flybridge STIDD	21
Flybridge Settee	21
Flybridge Settee/Table	21
Flybridge Helm	21
Flybridge Helm	21
Generator	22
Engine Room	22
Engine Room	22
Stern View	22
КОНТАКТЫ	23
Контактная информация	23
Телефоны	23
Время работы	23

Адрес

23

ХАРАКТЕРИСТИКИ

Основная информация

Тип судна: Моторная яхта

Модельный год: 2007

Год постройки: 2007

Страна: United States

Размеры

Длина общая: 47' 0" (14.33m)

Ширина: 15' 1" (4.60m)

Скорость, вместимость и масса

Крейс. скорость: 26 Kts. (30 MPH)

Водоизмещение: 47900 Pounds

Вместимость воды: 206 Gallons

Вместимость сточного бака: 68 Gallons

Объем топливного бака: 700 Gallons

Размещение

Всего кают: 2

Корпус и палуба

Материал корпуса: Fiberglass

Информация о двигателе

Двигатели: 2

Производитель: Caterpillar

Модель: C-12 ACERT

Тип двигателя: Inboard

Тип топлива: Diesel

ПОДРОБНОЕ ОПИСАНИЕ

Walkthrough

The salon is entered through the aft door. On port is a very comfortable curved settee that pulls out into an additional berth. A high-low teak dining table with fold-out leaves converts this area into dining. A double fixed mate bench seat is forward of the settee. There is a chart table with lift-up teak cover for storage.

The lower helm station is on STBD with STIDD chair upholstered in UltraLeather. There is also a helm side door with a Phantom sliding screen. Aft is two new custom Palecek rattan arm chairs. The original GB barrel chairs were removed as they were too large for the area.

The galley is down 4 steps on port. It offers undercounter SubZero refrigeration and a corner reach-in freezer. There is abundant cabinet storage, Silestone counters and double stainless steel Scanvik sink. Also a Sharp micro/convection oven (being repaired).

The guest stateroom is on STBD and features two fore and aft berths, hanging locker and two port windows.

The guest head is across on port and has a separate stall shower, Silestone Ivory Coast counter, stainless steel Scanvik round sink, VacuFlush toilet and abundant cabinet storage.

The Master STRM is forward with island queen berth, hanging locker, bureau and plenty of cabinet storage. There are also two adjustable reading lights. The Master Head is ensuite with separate stall shower, Silestone counter, stainless steel Scanvik round sink and VacuFlush toilet.

Throughout is:

Teak and holly soles

Oceanair hatch screens/blackout shades

Lined custom drapes

Bright finished teak cabinetry

LED overhead lights on dimmers in Salon and Master Stateroom

Salon

- Settee upholstered in custom off-white UltraLeather that converts to double berth
- Settee cushions renewed with memory foam (2013)
- Custom throw pillows
- Teak high-low dining table with fold-out leaves and maple inlay
- Dimmable overhead LED lighting

- Adjustable GB stainless steel reading lights (2)
- Sharp flat screen TV on electric lift in teak cabinet between chairs
- Bar cabinet
- Rug
- Aft door with Phantom Retractable screen
- Palecek rattan arm chairs, cushions UltraLeather (2)
- Yamaha/Cambridge Audio entertainment system including HDMI capability, internet TV (Roku 3), iPhone/iPad compatability (2014)

Galley

- Silestone Capri Limestone counters
- SubZero under counter refrigerator
- Corner mounted reach-in freezer
- Overhead and under counter teak cabinets
- Sharp Micro/convection oven included but off boat for repair
- Princess glass cooktop with Silestone cover
- Electric exhaust fan vented to outdoors
- Scanvik double stainless steel sinks
- Grohe sink faucet with pull-out sprayer
- Abundant teak storage cabinets
- (2) port windows and overhead hatch

Guest Stateroom

- Twin fore and aft berths
- New bedspreads (8/14)
- Air handler
- Large cedar lined hanging locker
- (2) port windows
- (2) GB stainless steel adjustable reading lights
- Teak framed beveled mirror
- Storage under berths
- End table between berths

Guest Head

- Silestone Ivory Coast counter
- Scanvik round stainless steel sink
- Separate stall shower with fiberglass walls and Corian shower pan
- Vacuflush toilet
- Exhaust blower to outside
- Grohe faucet, single lever
- Teak framed beveled mirror
- Teak cabinet storage

- Port window
- Shower drain pump, DC

Master Stateroom

- Queen island berth with (2) large drawers underneath plus additional storage
- New bedspread (8/14)
- Large cedar lined hanging locker
- (2) Adjustable arm reading lights with shades
- Drawer and shelf storage
- (1) port window in STRM, (1) port window in Master ensuite head
- Bureau with drawers
- Inner spring mattress

Master Head

- Silestone Ivory Coast counter with Scanvik stainless steel oval sink
- Teak framed curved separate stall shower door
- VacuFlush toilet
- Grohe faucet, single lever
- Separate stall shower with fiberglass walls and Corian shower pan
- Exhaust blower to outside
- Port window
- Shower drain pump, DC
- Teak framed beveled mirror
- Teak cabinet storage

Lower Helm Electronics

- Raymarine E-120 networked displays (2) for GPS plotter, radar, depth
- Raymarine Smart Pilot Remote controller
- Raymarine ST 8002 Autopilot (Smart Pilot)
- Raymarine SR100 Satellite Weather Service receiver
- Raymarine 4 kw Pathfinder Radar
- Raymarine Raystar 125 GPS Sensor
- Raymarine ST 60+ Tridata Display
- Raymarine e7 Touchscreen Multifunction device at Mate's seat
- Icom IC-M604 VHF w/remote Mic
- CAT Marine Power Displays (2) – electronic displays with fuel burn data, synchronizer
- Twin Disc EC-300 electronic multi station control gears and throttle
- FLIR Night Vision integrated to lower and upper helms
- DSM 300 Digital Sounder Module
- Sleipner Sidepower SP125T bow thruster
- Raymarine 37 STV Satellite TV system
- ACR remote spot light with custom brow mount-dual control (model RCL 100D) motor drive,

dual beam

- Compass with light

Helm Area

- Bench seat to port
- Chart locker, teak
- Electronics console, teak
- Electronics locker, overhead with removable panel
- STIDD helm seat, Admiral Low Back with deluxe chrome package
- Teak rimmed steering wheel
- Helm side door with Phantom retractable screen

Upper Helm Electronics

- Raymarine E-120 networked displays (2) for GPS plotter, radar, depth
- Raymarine Smart Pilot Remote controller
- Raymarine ST 8002 Autopilot (Smart Pilot)
- Raymarine ST 60+ Tridata Display
- Icom IC-M504 VHF
- CAT Marine Power Displays (2) – electronic displays with fuel burn data, synchronizer
- Twin Disc EC-300 electronic multi station control gears and throttle
- FLIR Night Vision integrated to lower and upper helms (2012)
- Sleipner Sidepower SP125T bow thruster
- ACR remote spot light control pad
- Compass with light

Flybridge

- Courtesy lights
- Deck non-skid, painted Awlgrip Moondust
- Electronics console, molded fiberglass
- L-Settee (molded fiberglass) with full storage under upholstered in Nautolex Softdura Extra Off-White with Chamois piping
- STIDD helm seats upholstered in UltraLeather Chamois with footrests (2) – New UltraLeather covers ordered 8/14
- Steering wheel, stainless steel, teak rimmed
- Teak table with stainless steel pedestal
- Navy canvas covers for STIDD's, helm, table and settee
- Navy canvas weather cloth "Dodgers"
- Navy canvas bimini
- Aluminum mast, painted and hinged for lowering with power winch for carrying, launching, and retrieving dinghy (2012)

Deck & Hull

- Gelcoat Flag Blue in excellent condition
- Varnished teak toe rail
- Wide side decks with s/s full length double safety rails, Awlgrip non-skid
- Spiral staircase to flybridge with teak treads
- Maxwell 2200 anchor windlass and s/s bow roller
- Lewmar stainless steel Delta anchor with 250' all chain rode (3/8 HT G4)
- Suncor stainless steel swivel
- Anchor chain locker, self draining
- Fresh water wash down in port bow locker
- Twin stainless steel dorade vents mounted on varnished teak boxes
- Chock and mooring cleats, stainless steel
- Teak flag pole with holders, bow and stern
- Foredeck lockers, port and starboard
- Teak navigation light boards
- Rail gates at port and starboard
- Windows, tempered glass, fritted, bonded, flush installation
- Windshield, center opening with stainless steel frame and electric actuator, tempered glass
- Trinka 10 dinghy with oars and sail rigging
- Torqueedo 1003 Travel electric dinghy motor (2013)
- Custom cockpit Shade (2012)

Cockpit

- Courtesy lights
- Engine room access, hydraulic
- Lazarette lockers, pneumatic raise – (3)
- Miele electric grill with storage under
- Wired and plumbed for ice-maker
- Pop-up fender cleats port and starboard
- Cockpit freshwater wash down
- Transom door to swim platform
- Teak decking in excellent condition, epoxy bonded not glued

Electrical

- AC/DC distribution panels
- Kahlenburg air horn
- Air-conditioning, reverse cycle, (2) units salon/galley, (1) unit master STRM, air-handler guest
- Alarm and indicator panel, each station
- Alternator, each engine and generator
- Batteries, AGM with fiberglass boxes, lids and straps, (2) 8D engine starting, (3) 8D house, (1) 2D generator starting
- Battery charger automatic 50 amp
- Battery condition indicator

- Battery disconnect switch
- Battery switch, emergency paralleling
- Bilge pumps, automatic DC
- Bonding system
- Bow thruster, Sleipner Sidepower SP125TC, DC
- Carbon monoxide detector in sleeping areas and salon
- DC converters, 24-12V, 40 amp
- Engine room lights, AC fluorescent lights with diffusers
- Engine room lights, DC
- Pressurized fresh water system, DC
- Fuel transfer pump, DC
- Onan generator with sound shield, 13.5 kW
- Helm outlet, DC at each station
- Holding tank level indicators
- Holding tank, direct discharge with y valve on all toilets, DC
- Isolation transformer
- Navigation lights, DC
- Oil change kit, DC
- Outlets throughout, with GFCI protection
- Rudder angle indicator DC
- Shore power inlet, 50 Amp aft, (1) Glendinning Cablemaster with 75' cable
- Tank gauges for fuel and water, with Computank Display
- Trim tabs, DC
- Water heater 20 USG, AC
- All wiring, marine grade tin-platted copper

Mechanical/Engine Room

- Engine room vents, Delta T air demisters
- Twin CAT C-12 ACERT 705 HP engines, 675 hours 8/14 (Note: 1,000 hour service scheduled 8/14)
- Engine room blowers, DC
- Ball valve on thru hulls above water line, bronze
- Bilge pump, manual
- Drip pans under engines
- Engine Controls, Twin Disc EC300, single lever, each station
- Engine raw water intake strainers
- Engine room faucet, fresh water
- Engine room sound insulation
- Exhaust system, sea water-cooled, with muffler
- Fire extinguisher, with engine, generator, blower shut down and override control
- Twin fuel filter, Racor water separators on each engine, single on generator
- Fuel tank, fiberglass baffled
- Gas/water separator on generator exhaust system

- Nickel-aluminum-bronze dynamically balanced
- Rudder, cast bronze
- Groco Safety Seacocks on engine raw water inlets
- Dripless shaft log with spare seals
- Engine room sole Diamond Plate
- Hydraulic steering with power assist
- Bronze struts with rubber bearings
- Aluminum painted water tanks
- Water maker prep, wired and plumbed

Comments

Penelope is a beautiful late model incredibly taken care of Grand Banks 47 Flybridge. She has been heated shed stored each winter from October to April. The 47 FB is an excellent sea boat with its Ray Hunt designed hull. They are well balanced and a joy to operate in any condition. This boat will get you to safe harbor and it will be fun along the way.

This particular 47 FB has had very good care through her life. She shows as well as a new boat from her spotless engine room to her mast top. She's well equipped and all services, maintenance, cosmetics are fully up to date. This is a rare jewel among 47's and is not to be missed. Truly turn key for the upcoming Southern boating season.

Исключения

При продаже яхты исключаются личные вещи владельца.

Отказ от ответственности

Компания предоставляет описание судна или яхты добросовестно, но не может гарантировать точность этой информации, а также не ручается за техническое состояние. Покупатель должен проинструктировать своих агентов или оценщиков исследовать представленную информацию более подробно, по собственному желанию. Продажа судна или яхты, изменение цены или снятие с продажи будет происходить без предварительного уведомления.

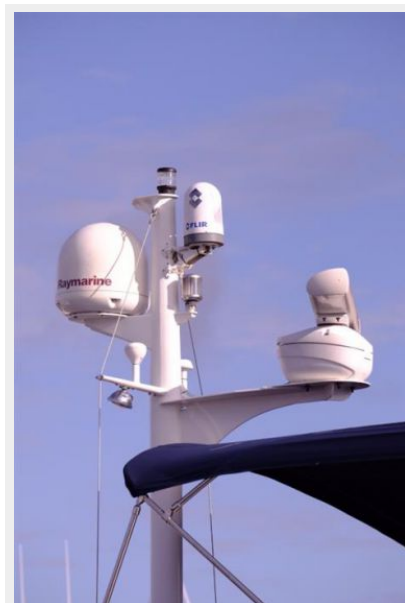
ФОТОГРАФИИ



Brow



Mast Electronics



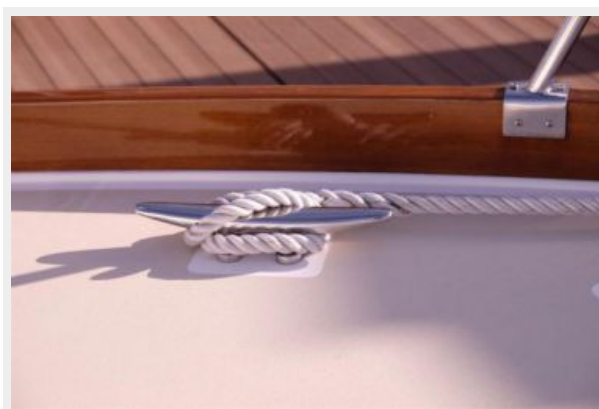
Bow



Bow



Deck Cleat



Salon/Dining



Salon Port



Salon



Galley



Galley



Galley Stove



Lower Helm



Lower Helm



Lower Helm



Companionway Stairs



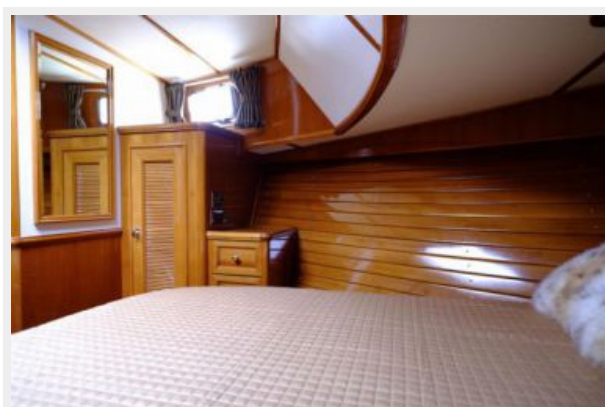
Master Stateroom



Companionway



Master Port



Master Port Aft



Master Head Cabinet



Master Shower



Guest Stateroom



Guest Stateroom



Guest Vanity



Guest Head



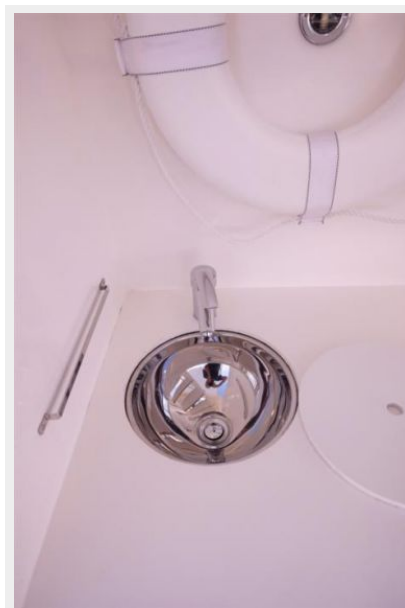
Guest Shower



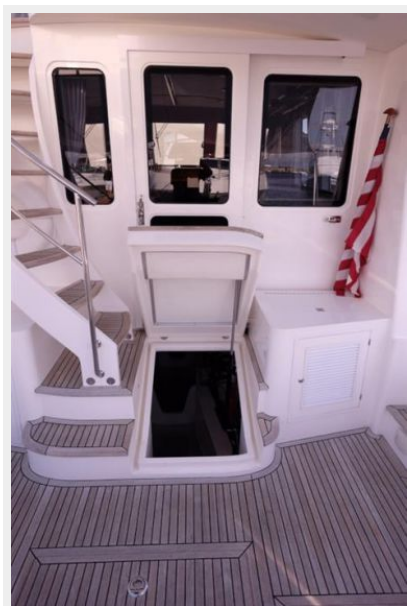
Miele Grill



Cockpit Sink



Aft Deck Access to Engine Room



Flybridge Settee Covers



Flybridge Seat Covers



Flybridge STIDD



Flybridge Settee



Flybridge Settee/Table



Flybridge Helm



Flybridge Helm



Generator



Engine Room



Engine Room



Stern View



КОНТАКТЫ

Андрей Шестаков (Andrey Shestakov) – ведущий яхтенный брокер отдела продаж яхт и судов компании Shestakov Yacht Sales Inc. Официальный представитель Shestakov Yacht Sales Inc. для русскоговорящих клиентов в центральном офисе компании в Майами/Форт Лодердейл/Флорида/США.

Контактная информация

Email: andrey@shestakovyachtsales.com

Web: shestakovyachtsales.com

Телефоны

Краснодарский край: **+7(918)465-66-44**

США, Майами, Флорида: **+1(954)274-4435**

Время работы

Понедельник – Суббота: **9:00 - 21:00**
EDT

Воскресенье: **Закрито**

Адрес



Harbour Towne Marina, 850 NE 3rd St,
STE 213, Dania, FL 33004