

DIE HARD — OCEAN YACHTS



Builder: [Ocean Yachts](#)

Year Built: 1981

Model: Sport Fisherman

Price: PRICE ON APPLICATION

Location: United States

LOA: 42' 0" (12.80m)

Beam: 14' 4" (4.37m)

Min Draft: 3' 8" (1.12m)

Cruise Speed: 22 Kts. (25 MPH)

Max Speed: 28 Kts. (32 MPH)

Our experienced yacht broker, Andrey Shestakov, will help you choose and buy a yacht that best suits your needs **DIE HARD — Ocean Yachts** from our catalogue. Presently, at Shestakov Yacht Sales Inc., we have a wide variety of yachts available on our sale's list. We also work in close contact with all the big yacht manufacturers from all over the world.

If you would like to buy a yacht **DIE HARD — Ocean Yachts** or would like help answering any questions concerning purchasing, selling or chartering a yacht, please call **+1(954)274-4435**

TABLE OF CONTENTS

| | |
|--|----|
| TABLE OF CONTENTS | 2 |
| SPECIFICATIONS | 4 |
| Overview | 4 |
| Basic Information | 4 |
| Dimensions | 4 |
| Speed, Capacities and Weight | 4 |
| Accommodations | 4 |
| Hull and Deck Information | 5 |
| Engine Information | 5 |
| DETAILED INFORMATION | 6 |
| Accommodations | 6 |
| Master Stateroom, Forward | 6 |
| Guest Stateroom, Amidship Port | 6 |
| Salon | 6 |
| Head | 7 |
| Galley, Below Deck, Amidship Starboard | 7 |
| Helm / Electronics and Navigation | 7 |
| Deck | 7 |
| Engine and Mechanical Equipment | 8 |
| Electrical System / Equipment | 8 |
| Cockpit / Fishing Equipment | 8 |
| Exclusions | 9 |
| Salesman's Comments | 9 |
| Exclusions | 9 |
| Disclaimer | 9 |
| PHOTOS | 10 |
| Master Stateroom 1 | 10 |
| Forward View Profile | 10 |

| | |
|---|-----------|
| Master Stateroom 2 | 10 |
| Guest Stateroom | 10 |
| Salon 1 | 11 |
| Salon 2 | 11 |
| Head | 11 |
| Galley 1 | 11 |
| Galley 2 | 11 |
| Helm / Electronics & Navigation 1 | 11 |
| Helm / Electronics & Navigation 2 - Auto Pilot | 12 |
| Helm / Electronics & Navigation 3 - Electronics | 12 |
| Helm / Electronics & Navigation 4 - Electronics | 12 |
| Helm / Electronics & Navigation 5 - Electronics | 12 |
| Helm / Electronics & Navigation 6 - Electronics | 13 |
| Engine & Mechanical Equipment 1 | 13 |
| Engine & Mechanical Equipment 2 | 13 |
| Cockpit / Fishing Equipment - Cockpit | 13 |
| CONTACTS | 14 |
| Contact details | 14 |
| Telephones | 14 |
| Office hours | 14 |
| Address | 14 |

SPECIFICATIONS

Overview

PRICE JUST REDUCED! OWNER WANTS SOLD!!! THIS 42' OCEAN SUPER SPORT RUNS AND LOOKS GREAT! SHE IS PRICED AGGRESSIVELY FOR QUICK SALE!!! ACT NOW!!!

Basic Information

Category: Sport Fisherman

Sub Category: Convertible

Model Year: 1981

Year Built: 1981

Country: United States

Vessel Top: Hardtop W/Tower

Cockpit: Yes

Dimensions

LOA: 42' 0" (12.80m)

Beam: 14' 4" (4.37m)

Min Draft: 3' 8" (1.12m)

Speed, Capacities and Weight

Cruise Speed: 22 Kts. (25 MPH)

Max Speed: 28 Kts. (32 MPH)

Displacement: 30000 Pounds

Water Capacity: 100 Gallons

Fuel Capacity: 480 Gallons

Accommodations

Total Cabins: 2

Total Berths: 5

Sleeps: 5

Total Heads: 1

Hull and Deck Information

Hull Material: Fiberglass

Deck Material: Teak

Hull Configuration: Modified V-Hull

Hull Color: Blue

Engine Information

Engines: 2

Manufacturer: Detroit Diesel

Model: 671 TI

Engine Type: Inboard

Fuel Type: Diesel

DETAILED INFORMATION

Accommodations

Sleeps four owners and guests in two Staterooms plus settee sleeps one for a total of five berths. One Head with shower.

Master Stateroom, Forward

- V-berth
- Paneling
- Cabinets
- Carpeting
- Wallpaper
- Hanging locker
- Under bed drawer
- Under bed storage
- Stereo system w/ speakers
- Air conditioning / heater with controls

Guest Stateroom, Amidship Port

- Cabinets
- Carpeting
- Twin berth
- Air conditioning / heater
- Stereo system w/ speakers

Salon

- TV
- Chair
- Cabinets
- Carpeting
- Mini blinds
- L-shaped settee
- Cable TV hookups
- Stereo system w/ speakers
- Air conditioning / heater with controls

Head

- Sink
- Shower
- Exhaust fan
- Medicine cabinet
- Overboard, recirculating, holding tank, electric head

Galley, Below Deck, Amidship Starboard

- Sink
- Oven
- Carpeting
- Refrigerator
- Water heater
- Microwave oven
- Two-burner, electric stove
- Pressure fresh water system

Helm / Electronics and Navigation

- Fish finder
- Transducer
- Furuno GP-32 GPS
- Cetek 210 auto pilot
- Icom M-402 VHF radio
- Standard Horizon GP-190 GPS / Plotter

Deck

- Anchor davit
- Bridge curtain
- Transom door
- (2) Helm seats
- Spreader lights
- (6) Life jackets
- Navigation lights
- Bow pulpit w/ rails
- Anchor w/ 150' lines
- Side stanchions w/ life lines
- Single, fixed search light w/ remote control

- Salt water, pressure Deck wash down system

Engine and Mechanical Equipment

- Trim tabs
- Air conditioner
- Racor fuel filters
- Fire extinguisher
- (2) Bilge blowers
- Oil pressure alarm
- Oil transfer system
- Fire control system
- Fresh water cooling
- Engine synchronizers
- Bridge engine controls
- Engine fuel shut-off valve
- Hydraulic, wheel steering
- Engine temperature alarm
- Thermal, acoustical insulation
- (3) Automatic, manual bilge pumps
- Twin 450 hp. Diesel I/B 1981 Detroit Diesel 671 TI's w/ 2600 hrs. - 200 hrs. since major overhaul

Electrical System / Equipment

- (2) Batteries
- Dockside cables
- 12v DC electrical system
- Automatic battery charger
- 110v, 220v AC electrical system
- Onan 9kW generator w/ 450 hrs.

Cockpit / Fishing Equipment

- Fish box
- Bait well
- Marlin Tower
- (6) Rod holders
- 8-rod Rocket launcher (aft Bridge & Tower legs)

Exclusions

Owner's personal gear and items.

Salesman's Comments

PRICE JUST REDUCED! OWNER WANTS SOLD!!! THIS 42' OCEAN SUPER SPORT RUNS AND LOOKS GREAT! SHE IS PRICED AGGRESSIVELY FOR QUICK SALE!!! ACT NOW!!!

Exclusions

Owner's personal belongings.

Disclaimer

The Company offers the details of this vessel or yacht in good faith but cannot guarantee or warrant the accuracy of this information nor warrant the condition of the vessel. A buyer should instruct his representatives, agents, or his surveyors, to investigate such details as the buyer desires validated. This vessel or yacht is offered subject to prior sale, price change, or withdrawal without notice.

PHOTOS

Forward View Profile



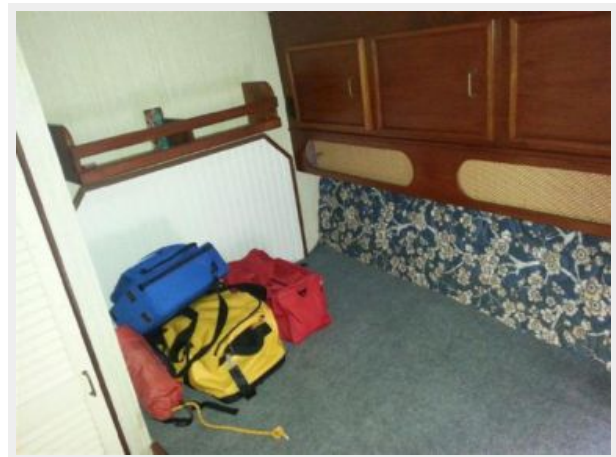
Master Stateroom 1



Master Stateroom 2



Guest Stateroom



Salon 1



Salon 2



Head



Galley 1



Galley 2



Helm / Electronics & Navigation 1



Helm / Electronics & Navigation 2 - Auto Pilot



Helm / Electronics & Navigation 3 - Electronics



Helm / Electronics & Navigation 4 - Electronics



Helm / Electronics & Navigation 5 - Electronics



Helm / Electronics & Navigation 6 - Electronics



Engine & Mechanical Equipment 1



Engine & Mechanical Equipment 2



Cockpit / Fishing Equipment - Cockpit



CONTACTS

Andrey Shestakov, leading yacht broker of the sales department of Shestakov Yacht Sales Inc. Shestakov Yacht Sales Inc., the official representative of the Miami/Fort Lauderdale FL headquarters.

Contact details

Email: andrey@shestakovyachtsales.com

Web: shestakovyachtsales.com/en/

Telephones

USA: +1(954)274-4435

Office hours

Monday – Saturday: **9:00 - 21:00** EDT

Sunday: **closed**

Address



Harbour Towne Marina, 850 NE 3rd St,
STE 213, Dania, FL 33004