

VIVERE — AZIMUT



Builder: AZIMUT

Year Built: 2013

Model: Motor Yacht

Price: PRICE ON APPLICATION

Location: United States

LOA: 64' 0" (19.51m)

Beam: 16' 7" (5.05m)

Max Draft: 4' 11" (1.50m)

Cruise Speed: 28 Kts. (32 MPH)

Max Speed: 34 Kts. (39 MPH)

Our experienced yacht broker, Andrey Shestakov, will help you choose and buy a yacht that best suits your needs **Vivere — AZIMUT** from our catalogue. Presently, at Shestakov Yacht Sales Inc., we have a wide variety of yachts available on our sale's list. We also work in close contact with all the big yacht manufacturers from all over the world.

If you would like to buy a yacht **Vivere — AZIMUT** or would like help answering any questions concerning purchasing, selling or chartering a yacht, please call **+1(954)274-4435**

TABLE OF CONTENTS

TABLE OF CONTENTS	2
SPECIFICATIONS	5
Overview	5
Basic Information	5
Dimensions	6
Speed, Capacities and Weight	6
Accommodations	6
Hull and Deck Information	6
Engine Information	6
DETAILED INFORMATION	7
Salon/Interior	7
Galley	7
Master Stateroom	7
Master Head	8
VIP Stateroom	8
VIP Head	8
Guest Stateroom	9
Guest Head	9
Lower Helm	9
Companionway	10
Flybrige Helm Electronics	10
Flybridge	11
Deck	11
Crew Quarters	12
Mechanical	12
Electrical	12
Exclusions	12
Disclaimer	12

Exclusions	13
Disclaimer	13
PHOTOS	14
Salon Seating	14
Galley	14
Master Berth	14
Lower Helm	14
Salon TV	14
Dinette	14
Master Closet	15
Master Setee	15
Master Head	15
Master Head	15
VIP Stateroom	16
VIP Stateroom	16
VIP Head	16
Guest Stateroom	16
VIP Head	17
Guest Head	17
Crew Quarters	17
Crew Quarters	17
Crew Head	18
Flybridge Seating Aft	18
Flybridge Grill	18
Flybridge Seating Forward	18
Aft Deck Entry	19
Aft Deck Seating	19
Ground Tackle	19
Hydraulic Swim Platform	19

Companionway	19
Aft Deck Crew Access	19
Washer	20
Dryer	20
Electrical Panel	20
Engine Hour Meter	20
Engine Room	21
Engine Room AC Chiller	21
Engine Room Dual Racor Filters	21
Engine Room Generator	21
Flybridge Layout	21
Lowerdeck GA	21
PMY Fuel Curve	22
Main Deck Interior Layout	22
Teak Walk Decks	22
Transom	22
Profile	23
CONTACTS	24
Contact details	24
Telephones	24
Office hours	24
Address	24

SPECIFICATIONS

Overview

The 64 Azimut Fly Bridge is equipped with more than 2000 HP and the lightweight of the carbon fibre design focuses on the comfort and safety of the owner and his entourage.

The lines of the deckhouse exude elegance and harmony with its stylish dynamic windows further enhanced by the "fin" effect emerging at the highest point of the saloon. The mirrored glass panels on the roll-bar and the back-lit logo on the fly bridge are fine examples of innovative styling.

The hull and structures were designed in a successful attempt to find the right balance between conventional composite materials and the more innovative ones such as carbon fibre. This process solidifies the structure and reduces the total weight of the boat which, in turn, allows the two 1150 HP Caterpillar engines to achieve top performance at low consumption. The upper deck can be enjoyed at any time since the hard top easily opens for full exposure or keep it closed at the touch of a button.

"Vivere" has it all.....Beauty, powerful engines, cruising elegance, stability (2 Sea Keeper Gyros) at anchor and an interior that features 3 state rooms all with en suite heads and a crews quarter...There are numerous excellent reasons that can lead to choosing "Vivere" as your next vessel. In addition, to the ultra-low engine hours (121 original), one will witness the intelligent use of space and other exclusive features such as the dinette bench with sliding back shared with the pilot seat. All these distinctive elements place the 64 at the top of its category.

"Vivere" was originally put into service on 10/15/2012.

A 35'+, quality center console would be a trade consideration.

Basic Information

Category: Motor Yacht

Sub Category: Flybridge

Model Year: 2013

Year Built: 2013

Country: United States

Coast Guard #: XAX64054H213

Vessel Top: Hardtop

Dimensions

LOA: 64' 0" (19.51m)	Beam: 16' 7" (5.05m)
Max Draft: 4' 11" (1.50m)	

Speed, Capacities and Weight

Cruise Speed: 28 Kts. (32 MPH)	Max Speed: 34 Kts. (39 MPH)
Displacement: 70000 Pounds	Gross Tonnage: 50 Pounds
Water Capacity: 258 Gallons	Holding Tank: 101 Gallons
Fuel Capacity: 1030 Gallons	

Accommodations

Total Cabins: 3	Sleeps: 6
Total Heads: 3	Crew Cabin: 1
Crew Sleeps: 2	Crew Heads: 1

Hull and Deck Information

Hull Material: Composite	Deck Material: Teak
Hull Configuration: Modified Deep Vee	Hull Color: White

Engine Information

Engines: 2	Manufacturer: Caterpillar
Model: C18	Engine Type: Inboard
Fuel Type: Diesel	

DETAILED INFORMATION

Salon/Interior

- Custom wood doors with stainless inlay and leather accents throughout the vessel
- Wood flooring in salon/dinette area
- Salon L-shaped sofa with sleeper sofa
- Salon Loveseat to starboard
- Booth style dinette
- Bose surround sound system
- Decorative clock and barometer
- Samsung pop-up flat panel TV
- Samsung DVD player
- KVH SAT TV controller
- Vitrifrigio stainless steel salon icemaker
- Roman shades in salon/galley/dinette for privacy
- Chilled water air conditioning controls
- Overhead lighting

Galley

- Kenyon 4 burner stove with sea rails
- Stainless steel sink with single lever faucet
- Solid surface decorative counter tops
- (2) Isotherm under counter refrigerators
- Waeco under counter galley freezer
- Whirlpool convection/microwave oven
- Built-in dish and drawer storage
- Garbage bins
- GFI receptacle
- Lexan bottle storage rack
- Neff overhead galley exhaust fan
- Wood floors
- Chilled water air conditioning controls

Master Stateroom

- Angled oversized master berth
- Oversized built in elevated settee with U shape seating configuration
- Chilled water air conditioning controls
- Samsung flat panel TV

- Samsung DVD player
- Decorative hand rails
- Opening feature windows both port and starboard
- Full size hanging locker with hinged mirror
- Standup built in closet
- Overhead lighting
- Reading lights
- Carpeting
- Storage compartments
- Full length dressing mirror

Master Head

- Molded fiberglass shower with grated wood floors and wood bench
- Tecma head
- Custom glass sink bowl with single lever faucet
- Built-in custom tooth brush holder and soap dispenser
- Wood floors
- GFI receptacle
- Overhead lighting
- Towel holder
- Porthole window and privacy blinds
- Cabinet storage
- Mirrored vanity with lower storage drawer

VIP Stateroom

- Center lined queen berth
- Port hole vents to port and starboard with interior blinds
- Hanging locker to port
- Full length hanging locker to starboard
- Overhead private escape hatch with opening port and screen
- Overhead cabinet storage to port and starboard
- Chilled water air conditioning controls
- Overhead lighting
- Carpeting
- Samsung flat panel TV
- Reading lights

VIP Head

- Full stand-up shower with full size glass entry door
- Tecma head
- Custom glass sink bowl with single lever faucet
- Built-in custom tooth brush holder and soap dispenser
- Wood floors
- GFI receptacle
- Overhead lighting
- Towel holder
- Porthole window and privacy blinds
- Vanity with lower drawer storage
- Storage cabinets

Guest Stateroom

- Side by side twin berths
- Chilled water air conditioning controls
- (2) Porthole windows and privacy blinds
- 12V receptacle
- Carpeting
- Samsung flat panel TV
- Oversized stand-up closet/hanging locker
- Reading lights

Guest Head

- Access from the companionway or guest stateroom
- Custom clear plexi circular shower
- Mirrored vanity
- Tecma head
- Custom glass sink bowl with single lever faucet
- Built-in custom tooth brush holder and soap dispenser
- Wood floors
- GFI receptacle
- Overhead lighting
- Towel holder
- Porthole window and privacy blinds

Lower Helm

- Azimut systems monitor/controller
- Azimut trim tab controller

- Xenta joystick control for thrusters
- (2) RayMarine Hybrid touch multi-function displays (Radar/Fishfinder/Plotter)
- RayMarine ST70 Auto pilot
- RayMarine ST70 multifunction unit
- RayMarine 240E VHF radio
- SeaKeeper Gyro controls
- ZF electronics controls
- Ritchie 4" compass
- Gauges
- Tilt wheel
- 12v plug
- Starboard electric window for docking
- Overhead lighting
- Upholstered oversized moved helm bench
- Battery parallel
- Fire suppression override control
- Windshield wiper controls

Companionway

- Courtesy lighting
- Miele clothes washer
- Miele clothes dryer
- Ship's electrical panel access
- Storage compartments
- Carpeting

Flybrige Helm Electronics

- RayMarine Hybrid touch (Radar/Fishfinder/Plotter)
- RayMarine ST70 Auto pilot
- RayMarine ST70 multifunction display
- RayMarine 240 VHF radio with remote speaker
- QUICK Chain counter
- ZF Electronic shifters
- Fusion MSIP700 Bridge stereo system
- Cigarette plug
- 12v plug
- Azimut trim tab controls
- Xenta joystick control for thrusters
- EPIRB

Flybridge

- Forward oversized sun pad with backrest
- Central low profile seating configuration with table and storage
- Aft sun pad
- Arch supported hardtop with center opening soft top (Opacmare)
- Fusion fly bridge stereo speakers
- Fly bridge rail package
- Wet sink
- Waeco freezer box
- Vitrifrigio manual fill fly bridge ice maker
- Techimpex fly bridge grill
- Single helms chair
- Courtesy lighting
- Glomex TV antennae
- Stainless steel radar mast
- Ship's horns
- Teak decks
- Full covers for the fly bridge seating

Deck

- (3) Opacmare glass entry doors with stainless steel frames
- Opacmare teak covered hydraulic swim platform
- Opacmare passerelle
- Horseshoe shaped cockpit seating with stainless steel pedestal and table
- Port and starboard side boarding doors
- Port and starboard aft boarding gates to the transom
- Teak decks on bridge, cockpit, steps, transom, swim platform, and walk around decks
- Manual fire pull over-ride pin on aft deck
- Battery on/off switches on aft deck
- Aft deck storage compartments
- Recessed lighting and speakers in the aft deck overhang
- Whale manual bilge pump
- Fresh water transom shower
- Dockside water connection
- Rail package
- Exterior black mesh snap on window sunshades
- (2) Forward windshield sunshades...1 black and 1 white
- Lofrans windlass with all chain, foot pedals, SS chute, and Delta anchor
- Engine room access door in aft deck floor

Crew Quarters

- (2) Single berths
- Chilled water air conditioning controls
- Carpeting
- Crew head/shower
- Actuated crew door

Mechanical

- Twin CAT C18 (1150hp) diesel engines with only 121 hours
- Bilge pumps
- Bilge air induction system
- ZF command system
- Bow thruster
- Stern thruster
- Dometic chilled water air conditioning system
- Dual Racor fuel filters
- Twin Disc 2:1 gears
- 2 Seakeeper Gyro Stabilizers

Electrical

- (2) 50amp shore power cords on electric reels
- CATV/phone hookup
- Kohler 23kw generator with hours
- Battery on/off switches
- Ship's batteries

Exclusions

OWNERS PERSONAL ITEMS OR ANY OTHER ITEM NOT LISTED HEREIN AT TIME OF VIEWING.

Disclaimer

The Company offers the details of this vessel in good faith but cannot guarantee or warrant the accuracy of this information nor warrant the condition of the vessel. A buyer should instruct his agents, or his surveyors, to investigate such details as the buyer desires validated. This vessel is offered subject to prior sale, price change, or withdrawal without notice.

Exclusions

Owner's personal belongings.

Disclaimer

The Company offers the details of this vessel or yacht in good faith but cannot guarantee or warrant the accuracy of this information nor warrant the condition of the vessel. A buyer should instruct his representatives, agents, or his surveyors, to investigate such details as the buyer desires validated. This vessel or yacht is offered subject to prior sale, price change, or withdrawal without notice.

PHOTOS

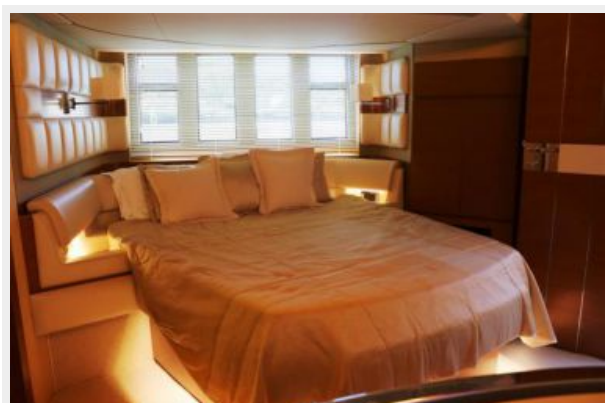
Salon Seating



Galley



Master Berth



Lower Helm



Salon TV



Dinette



Master Setee



Master Closet



Master Head



Master Head



VIP Stateroom



VIP Stateroom



VIP Head



Guest Stateroom



VIP Head



Guest Head



Crew Quarters



Crew Quarters



Crew Head



Flybridge Seating Aft



Flybridge Grill



Flybridge Seating Forward



Aft Deck Entry



Aft Deck Seating



Ground Tackle



Hydraulic Swim Platform



Aft Deck Crew Access



Companionway



Dryer



Washer



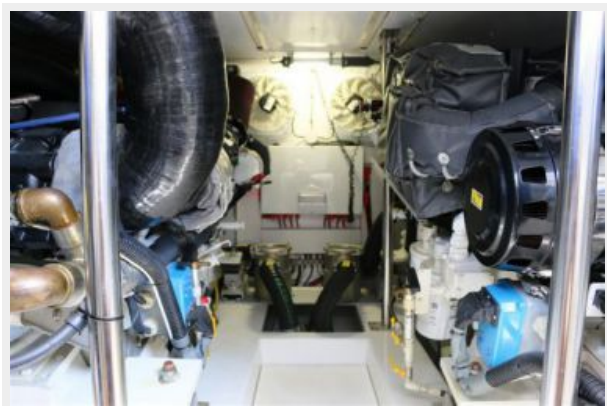
Electrical Panel



Engine Hour Meter



Engine Room



Engine Room AC Chiller



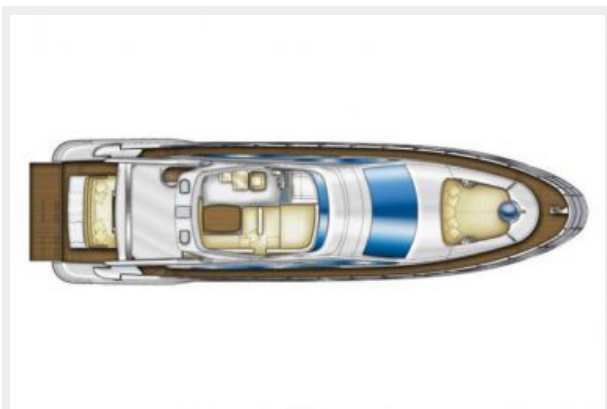
Engine Room Dual Racor Filters



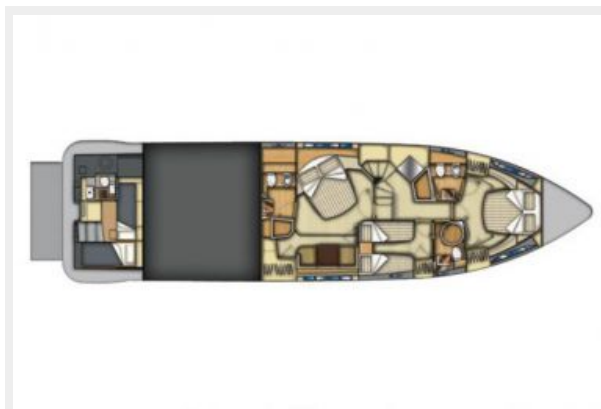
Engine Room Generator



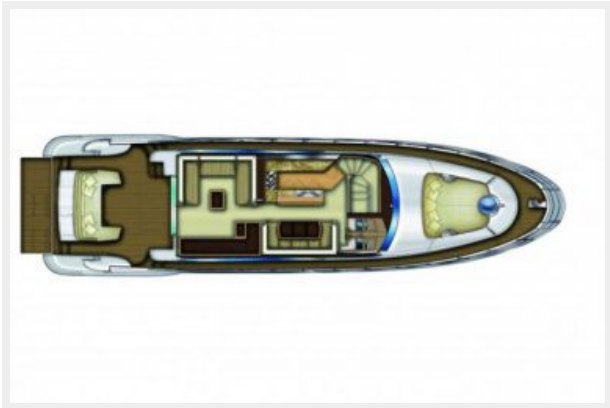
Flybridge Layout



Lowerdeck GA



Main Deck Interior Layout



PMY Fuel Curve

TEST BOAT SPECIFICATIONS										
Test Engine: 2/1,150-hp Caterpillar C18s										
Transmission/Ratio: Twin Disc MG5135SC marine gears w/ 2.84:1 ratio										
Props: 33.8x1.7 5-blade nibrals props										
Price as Tested: \$2,647,404										
The Numbers										
PMY's Numbers Azimut 64 Flybridge										
rpm	mph	knots	gph	mpg	nmpg	range	nm range	db	an	
600	8.4	7.3	5.9	1.42	1.24	1,316	1,149	67	0.	
1000	12.9	11.2	12.4	1.04	0.90	964	834	71	1.	
1250	16.0	13.9	23.2	0.69	0.60	640	556	73	2.	
1500	21.8	19.0	38.6	0.56	0.49	519	454	73	3.	
1750	27.4	23.8	60.5	0.45	0.39	417	361	75	3.	
2000	32.9	28.6	73.4	0.45	0.39	417	361	78	3.	
2250	37.9	33.0	93.5	0.40	0.35	371	324	81	3.	
2350	39.6	34.4	106.7	0.37	0.32	343	297	82	3.	
Speeds are two-way averages measured with onboard GPS. GPH taken via Caterpillar display. Range 90% of advertised fuel capacity. Decibels measured on A scale. 65 dB-A is the level of normal conversation.										
OPTIONAL EQUIPMENT ON TEST BOAT										
hardtop w/ electric sunroof Xenta joystick controls, folding bimini top, teak flybridge and side decking										

Teak Walk Decks



Transom



Profile



CONTACTS

Andrey Shestakov, leading yacht broker of the sales department of Shestakov Yacht Sales Inc. Shestakov Yacht Sales Inc., the official representative of the Miami/Fort Lauderdale FL headquarters.

Contact details

Email: **andrey@shestakovyachtsales.com**

Web: shestakovyachtsales.com/en/

Telephones

USA: **+1(954)274-4435**

Office hours

Monday – Saturday: **9:00 - 21:00 EDT**

Sunday: **closed**

Address



Harbour Towne Marina, 850 NE 3rd St,
STE 213, Dania, FL 33004