

PTTARA 140' EXPLORER YACHT PROJECT — PTTARA YACHTS



Builder: PTTARA YACHTS

Year Built: 2015

Model: Motor Yacht

Price: PRICE ON APPLICATION

Location: Turkey

LOA: 139' 8" (42.55m)

Beam: 27' 3" (8.30m)

Min Draft: 8' 3" (2.50m)

Cruise Speed: 13 Kts. (15 MPH)

Max Speed: 16 Kts. (18 MPH)

Our experienced yacht broker, Andrey Shestakov, will help you choose and buy a yacht that best suits your needs **PTTARA 140' EXPLORER YACHT PROJECT — PTTARA YACHTS** from our catalogue. Presently, at Shestakov Yacht Sales Inc., we have a wide variety of yachts available on our sale's list. We also work in close contact with all the big yacht manufacturers from all over the world.

If you would like to buy a yacht **PTTARA 140' EXPLORER YACHT PROJECT — PTTARA YACHTS** or would like help answering any questions concerning purchasing, selling or chartering a yacht, please call **+1(954)274-4435**

TABLE OF CONTENTS

TABLE OF CONTENTS	2
SPECIFICATIONS	3
Overview	3
Basic Information	3
Dimensions	3
Speed, Capacities and Weight	3
Accommodations	4
Hull and Deck Information	4
Engine Information	4
DETAILED INFORMATION	5
Accommodations	5
Safety & Fire Protection	5
Mechanical	5
Electrical Equipment	5
Deck Equipment	5
Exclusions	5
Disclaimer	5
PHOTOS	7
CONTACTS	10
Contact details	10
Telephones	10
Office hours	10
Address	10

SPECIFICATIONS

Overview

Design & production of Motor Yacht "Pttara" has been done by certain experienced in-house teams of the shipyard. From the preliminary design stage until the current condition, each step has been achieved by computer aided design and production methods. (CAD + CAM). Therefore, the 3D design advantages have also been added to the production at any stage. At creating stage, main request from this yacht was having a sleek & modern viewed boat with large & fresh interior. Its length kept as 42.5 m (140') to be able to provide a boat, big enough to sail on the open seas & oceans and compact enough to anchor at the small bays of Mediterranean. Finally, the profile resulted successfully with its sleek and contemporary look. Therefore, to fulfill the fresh interior request; size of the salons & cabins kept very big and bright, within illusion of very wide windows. Production stages have also been achieved carefully and well planned. As a critical path, during the block erection stages, the certified welders have followed the 'welding sequence' rules strictly to avoid deformation from the hull & superstructure surfaces. Ultimately, on the boat, all these surfaces have been well faired; so it has been managed to reduce the duration & cost of cosmetic paint finishing (filler application & painting).

Basic Information

Category: Motor Yacht

Model Year: 2015

Year Built: 2015

Country: Turkey

Dimensions

LOA: 139' 8" (42.55m)

Beam: 27' 3" (8.30m)

Min Draft: 8' 3" (2.50m)

Speed, Capacities and Weight

Cruise Speed: 13 Kts. (15 MPH)

Cruise Speed Range: 3500

Max Speed: 16 Kts. (18 MPH)

Displacement: 793664.1432 Pounds

Water Capacity: 2905.892572 Gallons

Fuel Capacity: 15850.32312 Gallons

Accommodations

Total Cabins: 5

Sleeps: 12

Captain Cabin: True

Crew Cabin: 4

Crew Sleeps: 7

Hull and Deck Information

Hull Material: Steel

Exterior Designer: Serhat Yinanc

Interior Designer: Serhat Yinanc

Engine Information

Engines: 2

Manufacturer: Caterpillar

Model: C32 (1450 HP @ 2300 rpm)

Engine Type: Inboard

Fuel Type: Diesel

DETAILED INFORMATION

Accommodations

12 guests in 5 staterooms: Master Cabin (on Main Deck) 2 VIP Cabins, two persons in each cabin (on Lower Deck aft) 2 Twin Guest Cabins, three persons in each cabin (on Lower Deck midship) 7 crew in 4 cabins: 3 Crew Cabins, two persons in each cabin (on Lower Deck fore) Captain's Cabin (at Upper Deck midship portside, behind the wheel house)

Safety & Fire Protection

Life rafts: 2 x SOLAS B Pack, 16 people Life jackets: 25 Adult, 5 Children Fire, Smoke, Gas Intruder alarms: Custom made Bilge & fire pumps: Gianneschi Pumps Searchlight: 2 Security cameras: Central monitoring system for decks, interior & engine room

Mechanical

Bow thruster: Hydraulically Driven, 75 HP Water maker: 2 x Idromar 10,000 lt approx. daily production Stabilizers: 2 x Fin Stabilizer System, Underway Fuel separator: Alfa Laval, 760 lt/h Air-conditioning: 360,000 BTU with Fresh Air Supply Waste water treatment: Hamann AG Custom made Toilet system: EVAC Boilers: Gianneschi Boilers

Electrical Equipment

Voltage: 380 V Frequency:50 Hz Shore power converter: 2x 120 A

Deck Equipment

Anchors & chain:2 x HHP Pool Anchor Total Weight 315 kg Custom Made & 2 x 137.5 m Stud Link ø16 mm Chain Windlass: 2 x DATA, Capacity 5000 kg Passarelle: Custom Made, Stainless Steel & Teak Stern capstans: 2 x DATA, Capacity 1800 kg

Exclusions

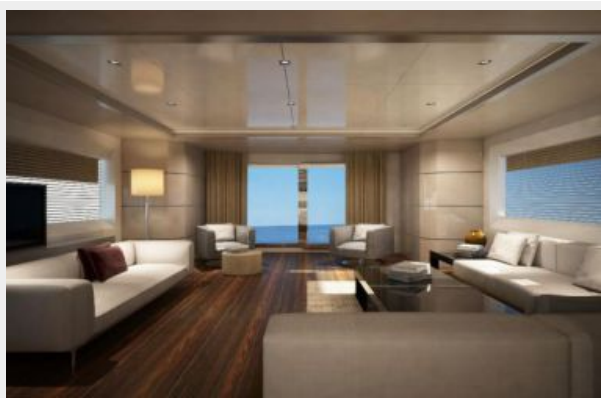
Owner's personal belongings.

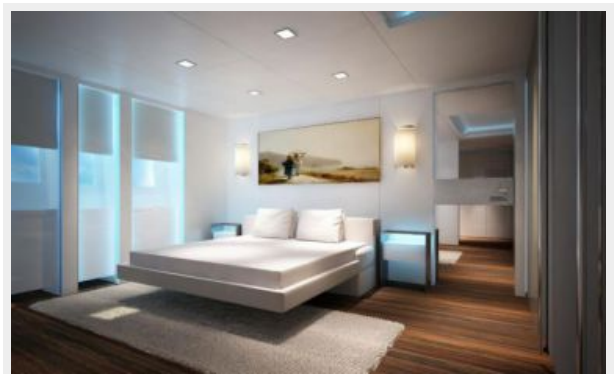
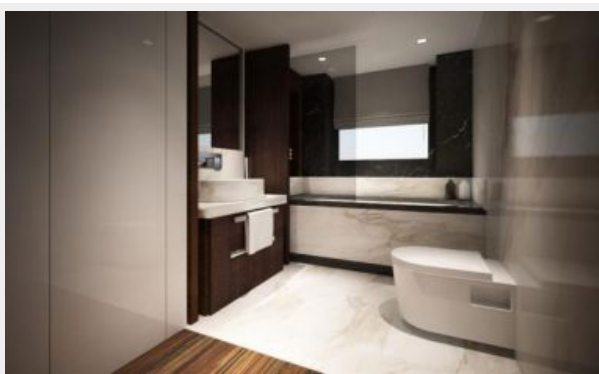
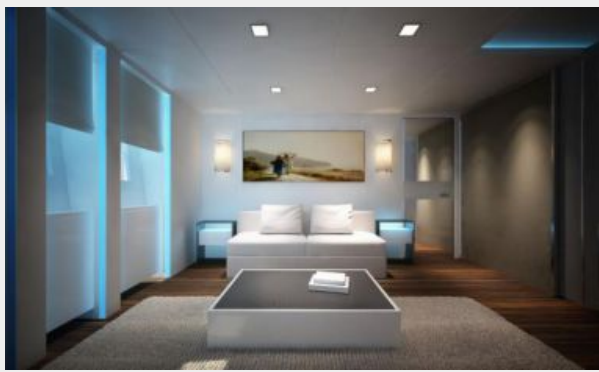
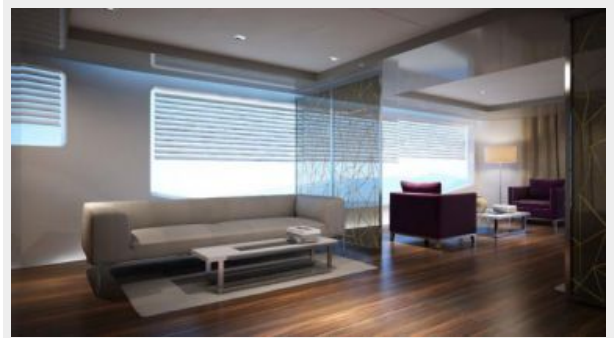
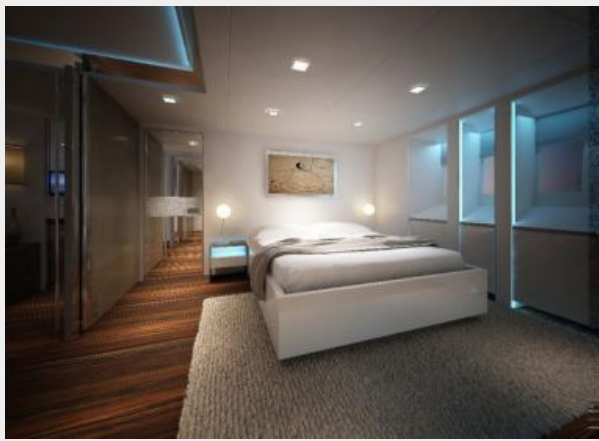
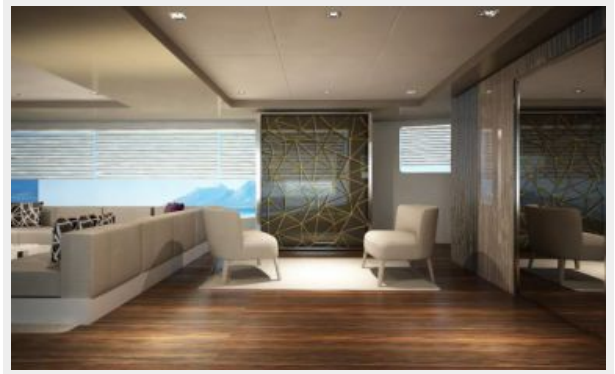
Disclaimer

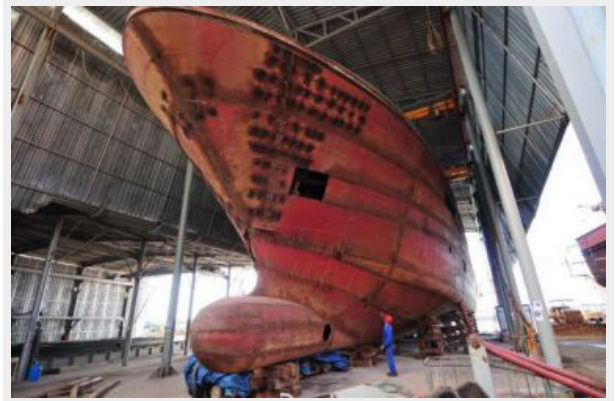
The Company offers the details of this vessel or yacht in good faith but cannot guarantee or

warrant the accuracy of this information nor warrant the condition of the vessel. A buyer should instruct his representatives, agents, or his surveyors, to investigate such details as the buyer desires validated. This vessel or yacht is offered subject to prior sale, price change, or withdrawal without notice.

PHOTOS







CONTACTS

Andrey Shestakov, leading yacht broker of the sales department of Shestakov Yacht Sales Inc. Shestakov Yacht Sales Inc., the official representative of the Miami/Fort Lauderdale FL headquarters.

Contact details

Email: andrey@shestakovyachtsales.com

Web: shestakovyachtsales.com/en/

Telephones

USA: +1(954)274-4435

Office hours

Monday – Saturday: **9:00 - 21:00** EDT

Sunday: **closed**

Address



Harbour Towne Marina, 850 NE 3rd St,
STE 213, Dania, FL 33004