

SCORPIO — PERSHING



Builder: PERSHING

Year Built: 2009

Model: Motor Yacht

Price: PRICE ON APPLICATION

Location: United States

LOA: 72' 0" (21.95m)

Beam: 18' 1" (5.51m)

Max Draft: 4' 9" (1.45m)

Cruise Speed: 38 Kts. (44 MPH)

Max Speed: 42 Kts. (48 MPH)

Our experienced yacht broker, Andrey Shestakov, will help you choose and buy a yacht that best suits your needs **Scorpio — PERSHING** from our catalogue. Presently, at Shestakov Yacht Sales Inc., we have a wide variety of yachts available on our sale's list. We also work in close contact with all the big yacht manufacturers from all over the world.

If you would like to buy a yacht **Scorpio — PERSHING** or would like help answering any questions concerning purchasing, selling or chartering a yacht, please call **+1(954)274-4435**

TABLE OF CONTENTS

TABLE OF CONTENTS	2
SPECIFICATIONS	3
Basic Information	3
Dimensions	3
Speed, Capacities and Weight	3
Accommodations	3
Hull and Deck Information	3
Engine Information	3
DETAILED INFORMATION	4
Scorpio	4
Exclusions	5
Disclaimer	5
PHOTOS	7
CONTACTS	19
Contact details	19
Telephones	19
Office hours	19
Address	19

SPECIFICATIONS

Basic Information

Category: Motor Yacht

Model Year: 2009

Year Built: 2009

Country: United States

Dimensions

LOA: 72' 0" (21.95m)

Beam: 18' 1" (5.51m)

Max Draft: 4' 9" (1.45m)

Speed, Capacities and Weight

Cruise Speed: 38 Kts. (44 MPH)

Max Speed: 42 Kts. (48 MPH)

Displacement: 95681 Pounds

Water Capacity: 262 Gallons

Fuel Capacity: 1189 Gallons

Accommodations

Total Cabins: 3

Total Heads: 3

Hull and Deck Information

Hull Material: Fiberglass

Engine Information

Manufacturer: MTU

Model: 12V-2000

Engine Type: Inboard

Fuel Type: Diesel

DETAILED INFORMATION

Scorpio

Features

- CUSTOM COMPLETE METALLIC EXTERIOR PAINT JOB COMPLETED 7/14
- MTU main engines, 12V-2000's M93, 1823 HP / 2450 RPM's w/ Arneson 14L drives
- Flir thermal imaging camera with help control
- Kohler Generator, 20KW, 60HZ
- Electronic ZF gear shifters
- Naviop Rudder control display for trim tabs
- Bow & stern thrusters
- Electric helm window
- Main Salon window/glass door drop down
- Electric sun roof over helm
- Electric sunshade over cockpit
- Stainless steel railings
- Windlass 2500 w/waterproof controls
- RINA Class A classification, NMMA certification
- Leather sofa in salon
- Washer & dryer
- Crew cabin

Galley

- Refrigerator & freezer
- Dishwasher
- Icemaker (in salon)
- Microwave oven
- Glass galley countertops

Deck Equipment

- Hydraulic passarelle
- Anchor winch w/galvanized chain
- Stern mooring winch
- Cockpit wet bar w/BBQ grill & sink
- Sun cushions on stern & bow
- Teak decks in cockpit, swim platform & side deck
- Hideaway cleats on swim platform
- Covers for windshield
- Electric door from aft deck to salon

Electronics & Helm Station

- Simrad C120 Radar, plotter & GPS
- Simrad ST60001 autopilot
- Simrad depthfinder
- Electronic engine control & LCD displays
- Bow thruster control
- Stern thruster controls
- Simrad VHF RS87 radio
- Naviop rudder control display for trim tabs
- Rudder angle indicator
- (2) SAT Domes on arch
- Joystick for flaps
- CCTV monitor at helm for camera in engine room
- Compass
- (2) Electric helm chairs
- Electric sunroof over helm station

Audio & Visual Equipment

- Satellite TV antenna w/decoder in salon
- Decoder for Satellite TV antenna in 3 staterooms
- 42" LCD flat screen TV in salon with electric up/down system
- Stereo system, DVD/CD player in salon with indoor & outdoor speakers
- 32" LCD flat screen TV in master stateroom w/ stereo & CD/DVD
- 23" LCD flat screen in VIP & guest staterooms w/ stereo & CD/DVD
- 15" flat screen TV in crew cabin

Engine / Mechanical & Electrical Equipment

- MTU main engines, 12V-2000's M93, 1823 HP / 2450 RPM's
- Arneson 14L surface drives
- Kohler Generator, 20KW, 60HZ
- Electronic ZF gear shifters new, 2012 w/joystick
- Generator battery, new 2014
- Nibral 5-bladed props

*NOT FOR SALE TO US RESIDENTS WHILE IN US WATERS

Exclusions

Owner's personal belongings.

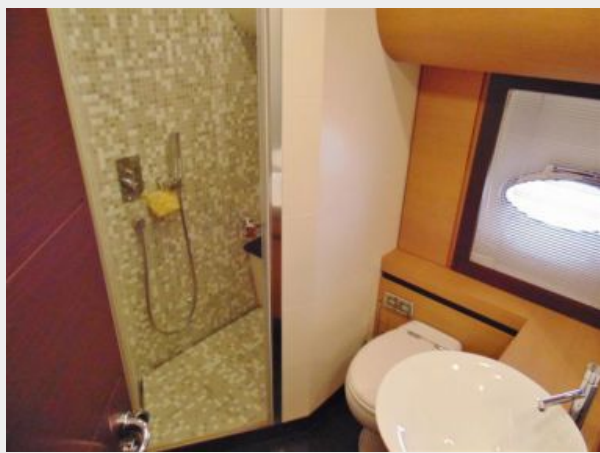
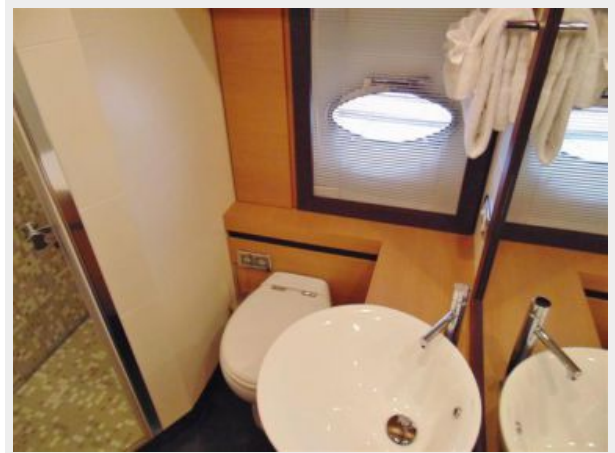
Disclaimer

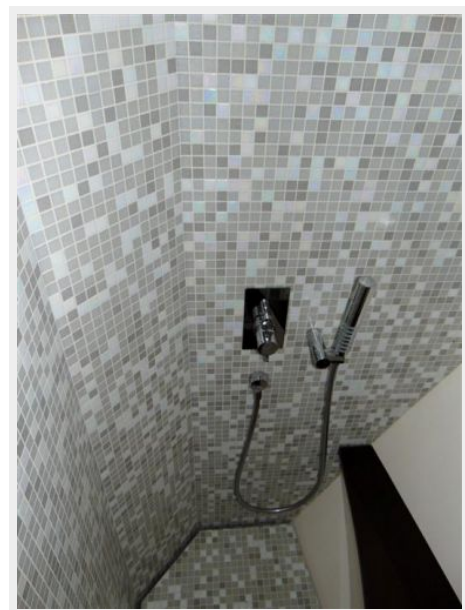
The Company offers the details of this vessel or yacht in good faith but cannot guarantee or

warrant the accuracy of this information nor warrant the condition of the vessel. A buyer should instruct his representatives, agents, or his surveyors, to investigate such details as the buyer desires validated. This vessel or yacht is offered subject to prior sale, price change, or withdrawal without notice.

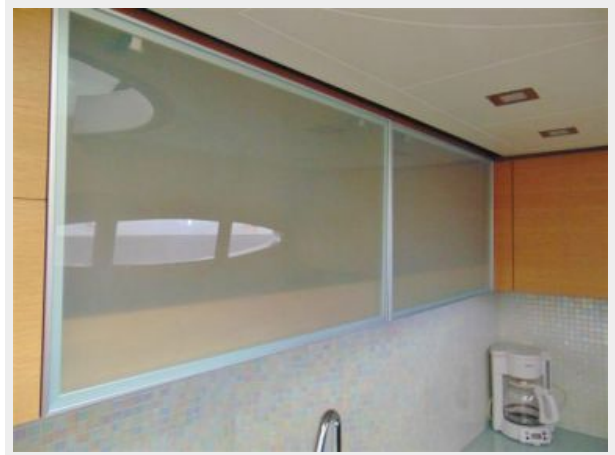
PHOTOS



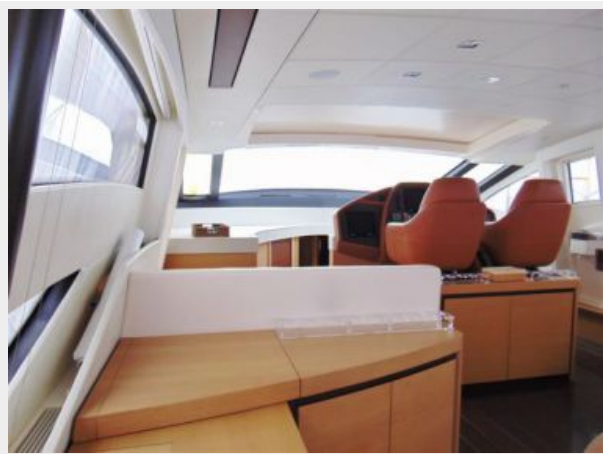




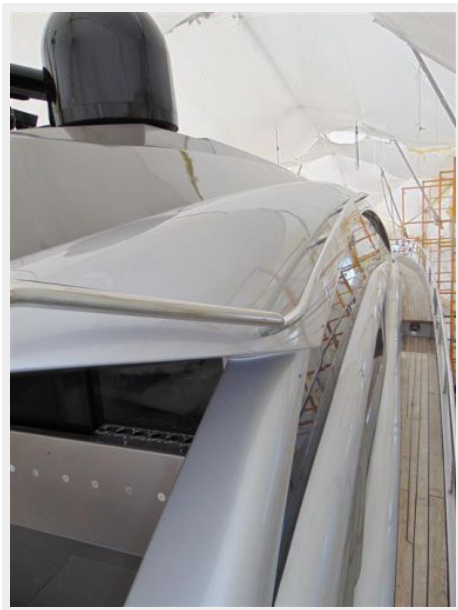


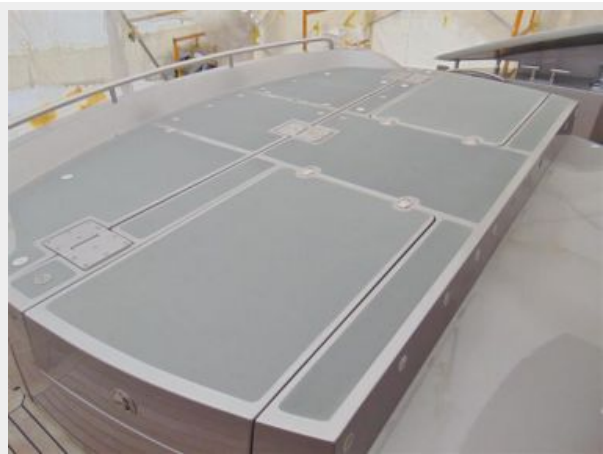
















CONTACTS

Andrey Shestakov, leading yacht broker of the sales department of Shestakov Yacht Sales Inc. Shestakov Yacht Sales Inc., the official representative of the Miami/Fort Lauderdale FL headquarters.

Contact details

Email: andrey@shestakovyachtsales.com

Web: shestakovyachtsales.com/en/

Telephones

USA: +1(954)274-4435

Office hours

Monday – Saturday: **9:00 - 21:00** EDT

Sunday: **closed**

Address



Harbour Towne Marina, 850 NE 3rd St,
STE 213, Dania, FL 33004