

MISS SCATT — GRAND BANKS



Builder: GRAND BANKS

Year Built: 2003

Model: Cruiser

Price: PRICE ON APPLICATION

Location: United States

LOA: 49' 11" (15.21m)

Beam: 16' 0" (4.88m)

Max Draft: 4' 4" (1.32m)

Cruise Speed: 25 Kts. (29 MPH)

Max Speed: 30 Kts. (35 MPH)

Our experienced yacht broker, Andrey Shestakov, will help you choose and buy a yacht that best suits your needs **MISS SCATT — GRAND BANKS** from our catalogue. Presently, at Shestakov Yacht Sales Inc., we have a wide variety of yachts available on our sale's list. We also work in close contact with all the big yacht manufacturers from all over the world.

If you would like to buy a yacht **MISS SCATT — GRAND BANKS** or would like help answering any questions concerning purchasing, selling or chartering a yacht, please call **+1(954)274-4435**

TABLE OF CONTENTS

TABLE OF CONTENTS	2
SPECIFICATIONS	5
Overview	5
Basic Information	5
Dimensions	5
Speed, Capacities and Weight	6
Accommodations	6
Hull and Deck Information	6
Engine Information	6
DETAILED INFORMATION	7
Notable Features	7
Vessel Overview	7
Arrangement	7
Interior Features	8
Salon	8
Galley & Domestic Systems	8
Master Cabin	8
Master Head	9
Guest Cabin Port	9
Guest Head	9
Pilothouse	9
Navigation And Entertainment	9
Mechanical & Syatems	10
Electrical	10
Exterior	11
Cockpit	11
Construction	11
Remarks	11

Exclusions	12
Exclusions	12
Disclaimer	12
PHOTOS	13
Pilothouse	13
L Settee	13
Large Leaf Table	13
Helm Deck Cabinet	13
Helm Stidd Seat	13
Companion Stidd Seat	13
Helm Console	14
Lower Helm Panel	14
GB Ships Wheel	14
Companion Bar Locker	14
Companion Locker	14
Companion Chart Bow	14
Galley	15
Galley Aft	15
Galley Refrigeration	15
Counter End Bar Area	15
Salon Settee	15
Salon Settee Table	15
TV with Swivel Mount	16
Master Queen Berth	16
Master En-Suite Head	16
Master Stall Shower	16
Guest Cabin	16
Guest Berth	16
Guest Cabin Aft Berth	17

Guest Head	17
Cockpit Aft Facing Double Settee	17
Cockpit	17
Pilothouse and Side deck Access	17
Cockpit Deck Chairs	17
Cockpit Arrangement	18
Fore and Side Decks	18
Anchor, Davit and Windlass	18
Light Boards	18
Dorades and Mast	18
Engine Room	18
CAT C-12	19
Dual Racors	19
Stern Lights Generator With Enclosure	19
Profile	19
Stern Quarter	19
CONTACTS	20
Contact details	20
Telephones	20
Office hours	20
Address	20

SPECIFICATIONS

Overview

The Grand Banks Eastbay 49 is a big traditional express cruiser designed by C. Raymond Hunt Associates and built to the industry's highest standards by Grand Banks. The benchmark of the category for many years, the Eastbay 54 and 55 were later derived from the same hull mold as the model line expanded. The C12 engines are current in the CAT series and superior to the earlier offered power in this model. She cruises effortlessly in the mid to upper 20 knot range with good economy for a planning vessel of this size and displacement. Top speed of nearly 30 knots comes in handy when outrunning storms or darkness. Much of her success results from her ease of operation and superior handling. She is easily operated by a couple, big enough for a month's cruise but small enough for a sunset boat ride. "MISS SCATT" is offered by her original owner who worked closely with the broker/dealer adding many thoughtful touches and custom features which contribute to the unrivaled appeal of this particular Eastbay 49, a few are noted above but the broker can further explain the many nuances. If you are considering an Eastbay 49 or other offering in the category it is suggested that you inspect "MISS SCATT" before forming any conclusions.

Basic Information

Category: Cruiser

Sub Category: Express

Model Year: 2003

Year Built: 2003

Country: United States

Dimensions

LOA: 49' 11" (15.21m)

LWL: 45' 8" (13.92m)

Beam: 16' 0" (4.88m)

Max Draft: 4' 4" (1.32m)

Speed, Capacities and Weight

Cruise Speed: 25 Kts. (29 MPH)

Max Speed: 30 Kts. (35 MPH)

Displacement: 48000 Pounds

Water Capacity: 175 Gallons

Holding Tank: 60 Gallons

Fuel Capacity: 760 Gallons

Accommodations

Total Cabins: 2

Sleeps: 5

Hull and Deck Information

Hull Material: Fiberglass

Deck Material: Teak and Fiberglass

Hull Configuration: Deep Vee

Exterior Designer: C. Raymond Hunt
Associates

Engine Information

Engines: 2

Manufacturer: Caterpillar

Model: C-12

Fuel Type: Diesel

DETAILED INFORMATION

Notable Features

• CAT C-12 700hp Engines w/ only 685 hrs. • Layout, 2 Cabins, 2 heads, stall shower master, large salon U-settee with table • Helm & Companion Stidd Seating w/ custom Teak Ladder Backs • New soft goods, bedding, drapes, shams, lamp shades (2013) • Washer/Dryer combo and Top Load Ice Chest on Helm Deck in custom cabinet • Grunert Holding Plate refrigerators w/ top load Grunnert freezer • Upgraded 13kw Northern Lights Generator in sound enclosure • Topsides AwlGrip Flag Blue (2013) • Cabin and Pilot House Air Conditioning/Heat • Professionally washed and detailed weekly, waxed monthly

Vessel Overview

The Grand Banks Eastbay 49 is a big traditional express cruiser designed by C. Raymond Hunt Associates and built to the industry's highest standards by Grand Banks. The benchmark of the category for many years, the Eastbay 54 and 55 were later derived from the same hull mold as the model line expanded. The C12 engines are current in the CAT series and superior to the earlier offered power in this model. She cruises effortlessly in the mid to upper 20 knot range with good economy for a planning vessel of this size and displacement. Top speed of nearly 30 knots comes in handy when outrunning storms or darkness. Much of her success results from her ease of operation and superior handling. She is easily operated by a couple, big enough for a month's cruise but small enough for a sunset boat ride. "MISS SCATT" is offered by her original owner who worked closely with the broker/dealer adding many thoughtful touches and custom features which contribute to the unrivaled appeal of this particular Eastbay 49, a few are noted above but the broker can further explain the many nuances. If you are considering an Eastbay 49 or other offering in the category it is suggested that you inspect "MISS SCATT" before forming any conclusions.

Arrangement

The yacht features a large cockpit, partially enclosed pilot house and lower deck with two cabin, two head layout, galley and dinette. The Master is forward with an island queen berth and ensuite head with separate stall shower. There is a guest cabin to port with athwartships twin berths, hanging locker and storage drawers. The guest head is opposite the guest cabin and features a shower arrangement. The down galley has beautiful Corian countertops with moldings, side by side under counter refrigerator with Grunert holding plate. Top load Grunnert freezer, Princess 3 burner electric stove with oven. Lots of counter surface and storage space and functional in a seaway. Three steps up from the lower deck is the pilot house area. To Starboard is the helm station with custom Stidd seating, adjacent to Port is a companion Stidd pedestal. The aft area of the helm deck offers L-and straight settees with large Teak table creating a fabulous indoor-outdoor entertaining area. The enclosure easily opens and secures to

the overhead for this open-air experience or can be fully removed. This space is air conditioned and heated to maintain comfort in varying climates. The large cockpit supports outdoor enjoyment for the whole crew with aft facing double bench seat to port and additional free standing Teak chairs. Access to the side and foredecks is easy allowing crew to safely move about the entire boat. The transom door opens to the large Teak swim platform where a Stainless Steel swim ladder which aids in boarding from the water.

Interior Features

- Satin finish Teak interior • Teak & Holly cabin soles • Air Conditioning/Heat (2) 16,000 BTU units • Corian Galley and Head Counters • Bulkheads, Almond laminate • Cabin doors Raised Panel Teak w/ hi quality SS lock sets • Cabinet furniture, teak faced and solid Teak • Drawers, teak faced with solid wood sides, drawer slides • Fabrics, Ultrasuede w/ other quality fabrics • Grab rails, Teak • Hardware, stainless steel • Headliner vinyl; Hull ceiling master is varnished Teak • Lighting, Halogen, 12 volt, reading lights at berths and seating locations • Portholes, stainless steel with White exterior trim rings and screens • Deck hatches Stainless Steel w/ integral Ocean Aire hatch Insect and solar screens • Curtains on many windows and ports • Louvered Locker Doors Pilot House

Salon

- Enlarged U-Settee with storage • Teak Table with flip down leafs, Hi-Lo Base • TV Cabinet w/ Flat Panel TV on custom SS swivel mount concealed by Tambour door • Outboard storage lockers and bookshelves • Bar cabinet, teak with bottle and glass compartments • Co2 Monitor

Galley & Domestic Systems

- Countertop, Corian w/ fiddle, hinging top load access lids (2) • Flip out Trash bin under sink, Recycle bin under steps • Inboard cabinet end open shelf nook • Refrigerator (2) with GB Teak clad door exterior, Grunert holding plate 110v/AC • Top Load freezer Insulated SS lined w/ Grunert holding plate • Microwave oven – convection range/oven, electric 110v/AC • Cook Top, 110v AC w/ Oven & Broiler • Washer/Dryer Combo vented (helm deck) • Pull out waste basket beneath sink, recycling bin under steps • Overhead and under counter dish Lockers, condiment locker, drawers, food stores • Faucet, single lever • Sink, large deep stainless steel • Exhaust blower, 12v/DC

Master Cabin

- Island Queen Berth (wider specs), (4) drawers and storage beneath • Outboard lockers, Teak hull ceilings • Frwd. locker bulkhead Teak • Cantelupi “Queen” reading lamps • Bureau with drawers • Hanging lockers ((2) Cedar lined w/ automatic lighting • Mattress w/ custom bedding

(new 2013) • Mirror, full length beveled glass with teak frame • Deck hatch w/ Ocean Aire blinds
• Co2 Monitor

Master Head

• En Suite - separate stall shower, bi-fold Acrylic shower door • Countertop Corian, Stainless Steel sink, cabinets, drawer • Exhaust blower, 12 volt • Air Conditioning/heat duct • Faucet, single lever Grohe • Mirror w/ Teak frame • Toilet, VacuFlush • Toilet paper holder • Toothbrush holder • Towel racks

Guest Cabin Port

• Athwart ship twin berths w/ drawers beneath • Custom bedding (new 2013) • Hanging locker with lined cedar wood • Mirror beveled glass, Teak frame • TV bulkhead mounted • Opening ports (2) deck hatch (1) • Pocket door • Co2 Monitor

Guest Head

• Hand shower, drain w/ sump • Countertop Corian w/ Stainless Steel sink • Exhaust blower, 12 volt • Air Conditioning/heat duct • Faucet, single lever Grohe • Mirror w/teak frame • Toilet, VacuFlush • Toilet paper holder • Toothbrush holder • Towel rack • Cabinets, drawers

Pilothouse

• (2) Stidd 500-200 Admiral w/ custom Teak Ladder Backs, Ultraleather upholstery, SS Pedestal
• Air Conditioning/Heat 16,000 BTU-optional • Helm Station w/ extensive Nav. instrumentation console mounted • Electronics console Teak • Electronics locker, overhead & companion station
• Chart Box with Chart Light • Dogs on engine room hatch for sound attenuation • Steering wheel, Teak ships wheel • Companion chart box, bar and lockers w/ glass storage • Side opening windows and canvas/Strataglass side and aft curtains (new 2010) • Opening center windshield panel, electric • Windows, side opening, sliding (2) • Overhead Hatches, opening w/ screens • L-Settee with rolled seat back detail • Settee Starboard • Large Teak Table w/ drop leaves • Top Load insulated SS lined ice chest in custom cabinet • Combo washer/dryer Asko in custom cabinet • Overhead Teak handrails • Overhead recessed Cantelupi lighting • Side Panel Reading Lights • Helm Cover Sunbrella • Stidd Seat Covers Sunbrella

Navigation And Entertainment

• Raymarine RL-80C 12" Radar display • Raymarine RC-631 Color GPS Chart Plotter • Raymarine 4Kw Antenna w/4' Ant • Raymarine Raystar 125 (WAAS) • Simrad AP20 Autopilot • VHF: ICOM IC-M 502 w/ Command Mic. • Raymarine ST-60 Depth Finder • Raymarine ST-60

Speed • Ritchie Compass • ACR RCL-100 Spotlight • VHF: Antenna and Mount • Kahlenburg Dual Trumpet Air Horn • Sharp Aquos 20" Flat panel LCD TV Installed in Salon • AM/FM CD-DVD Player w/ Remote 6CD Changer, Clarion • Bose Cockpit Speakers (2) Flush Mount Pilot House

Mechanical & Syatems

• Twin Caterpillar C-12 700 HP diesel engines with Twin Disc gears • Kobelt single lever shift/throttles • Engine synchronizer integral in CAT electronic engine management • Low speed idle switch • Sleipner "Side Power" Bow Thruster 12v/DC • Ball valve on all thru hulls above waterline • Bilge pump manual • Drip pans under engines • Dual Racor filters • Engine raw water intake sea cocks w/ strainers • Engine room faucet, fresh water • Engine room sound insulation upgraded • Exhaust system, seawater cooled, with mufflers • Centek in-line exhaust resonators • Fireboy fire extinguisher, with engine shut downs, generator and override control • Fuel filters, Dual Racor™ water separators on each engine and generator (single) • Fuel tanks (2), Auxiliary Aluminum FRP baffled fuel tank, Main Aluminum/FRP baffled aft • Gas/water separator on generator exhaust system • Propellers (2), Teinbridge 4 blade Nibral • Rudders, cast Bronze • Seacocks on thru-hulls below waterline, Bronze • Shaft logs Duramax with drip less shaft seals • Shafts, stainless steel • Steering with power assisted hydraulic • Struts, Bronze with rubber bearings • Water tanks, Stainless Steel • Vacuflush Head systems (2) with holding tanks

Electrical

• Generator Northern Lights 13.5KW with sound shield, diesel (757 hrs) • Inverter MAGNUM Energy (new 2012) • 16,000 BTU Marine Air reverse cycle heat/AC units (2) Cabin • 16,000 BTU Marine Air reverse cycle heat/AC units (2) Pilot House • AC distribution panels, 120 60 Hz /220 volt 50 Hz w/ Indicator light, reverse polarity • Air horn, Kahlenberg dual trumpet w/ compressor • Alternator, engines, 12 volt • Alternator, generator, 12 volt • Alarm panel, single station, w/Engine Oil Pressure and Temperature, lights for bilge pumps, Generator, Loss of Cooling Water, Engine Room Lights • Batteries, AGM glass matte with FRP boxes, lids and straps, (2) 8D engine starting, (2) x 8D, house, (1) Group 27 Generator starting • Battery charger, automatic, 12 volt 40 amp • Battery condition indicator • Battery switch, disconnect • Bilge pumps (4), automatic, 12 volt • Bonding system • Carbon Monoxide Detector in sleeping areas • Control panels, horn, anchor winch, trim tabs • DC distribution panels, 12 volt • Engine room Delta T blowers, 12 volt • Engine room lights, 12 volt and AC florescent lights 110V 60Hz Or 220V 50 Hz • Engine gauges and instrumentation electronic • Engine start/stop single station • Extra 16 position 12 DC circuit breaker panel overhead panel • Fresh water system, pressurized, 12v/DC, hot water heater 110VAC and engine circ. • Fuel transfer pump, 12v/DC • Galvanic isolator • Helm outlet, 110v/AC and 12v/DC • Holding tank discharge pump, 12v/DC • Level indicator panel, holding tank • Navigation lights, 12v/DC • Oil change kit 12v/DC • Outlets, galley, engine room and heads, GFCI protection, 120v/AC • Rudder angle indicator, 12v/DC • Shore power inlet, AC, 50 AMP 120/240v/AC w/ Glendenning Cablemaster • Tank gauges for fuel and water,

12v/DC Centroid™, with Computank Display • Dockside water inlet • Fresh water wash anchor locker • Salt water wash anchor locker

Exterior

• Companionway doors w/ Teak slide hatch • Anchor chain locker, self-draining • Anchor platform, single roller, stainless steel • Anodes, zinc, shaft and hull • Chocks and mooring cleats, stainless steel • Deck fills: fuel, water and waste pump-out plus optional direct hi speed fill neck on tank • Deck non-skid, side and forward cabin house deck and hardtop with painted non-skid • Dorade boxes, teak w/chrome vents • Engine room vents, Delta T Air demisters • Flagstaff holders, bow and stern Flagstaffs, teak, bow and stern • Foredeck lockers, port and starboard Fresh water faucet, inside forward deck locker • Grab rails, stainless steel • Mast, aluminum w/ custom gusset and mounts Awl Grip White • Rubrail, heavy-duty vinyl with stainless steel insert • Safety rails, stainless steel with intermediate rail and • Port and Stbd rail gate • Toe rail, teak varnished (2014) • Trim tabs, Bennett • Vents for fuel and water tanks • Windlass Maxwell 12v/DC, w/ Suncor polished SS 60lb Anchor w/ 200' chain rode • Windows, tempered glass • Ensign and Burgee Staffs, Teak w/ Sunbrella Covers

Cockpit

• Aft facing double bench seat w/ storage, Ultraleather upholstery • Decking, teak, epoxy bonded fastenerless • Swim ladder, fold-up, stainless steel w/teak • Swim platform, Teak • Transom door, hinged • Transom shower with retractable hose, hot/cold • Courtesy lights, 12 volt • Engine room hatch • Freshwater wash-down, fitting • Deck hatches (3) hinged w/ oversized gas assist cylinder lift-ups • Deck Chairs, folding Teak w/ folding Table (2) • Scuppers, stainless steel (2), large freeing ports (2) • Rod Holders (2)

Construction

• Hull topsides Awl Grip Flag Blue (2013) over factory CCP Flag Blue Gel Coat • Superstructure White Gel Coat, Non Skid "Moon Dust" Awl Grip, Teak Cockpit Decking • Boot stripe White & cove stripe Gold painted Awl-Grip (2013) • FRP composite PVC foam cored above waterline • Hand laid fiberglass Hydrex resin skin coat in hull laminate, Gel-coat fiberglass exterior • Solid fiberglass hull below waterline • Epoxy barrier undercoat, Micron CSC antifouling paint - Green • Hull structural grid FRP molded and foam • Molded quarter guard with SS rub rail • Teak Toe Rail Varnished

Remarks

"MISS SCATT" is truly an exceptional example of the GB49 Eastbay HX. She has been lightly used on the Connecticut River and nearby adjacent waters, shed stored in the off season. Her

original owner insists that she is washed and detailed weekly and waxed monthly while in service. It is the broker's opinion that a cleaner better maintained vessel of this type and vintage is not to be found. If you are considering an Eastbay 49 or other offering in the category it is suggested that you inspect "MISS SCATT" before forming any conclusions.

Exclusions

Owner's personal effects, artwork, tools, Keurig Coffee Maker, loose galley and general items. Any items seen aboard not specifically stated in this listing sheet should be considered exclusionary.

Exclusions

Owner's personal belongings.

Disclaimer

The Company offers the details of this vessel or yacht in good faith but cannot guarantee or warrant the accuracy of this information nor warrant the condition of the vessel. A buyer should instruct his representatives, agents, or his surveyors, to investigate such details as the buyer desires validated. This vessel or yacht is offered subject to prior sale, price change, or withdrawal without notice.

PHOTOS

Pilothouse



L Settee



Large Leaf Table



Helm Deck Cabinet



Helm Stidd Seat



Companion Stidd Seat



Helm Console



Lower Helm Panel



GB Ships Wheel



Companion Bar Locker



Companion Locker



Companion Chart Bow



Galley



Galley Aft



Galley Refrigeration



Counter End Bar Area



Salon Settee



Salon Settee Table



TV with Swivel Mount



Master Queen Berth



Master En-Suite Head



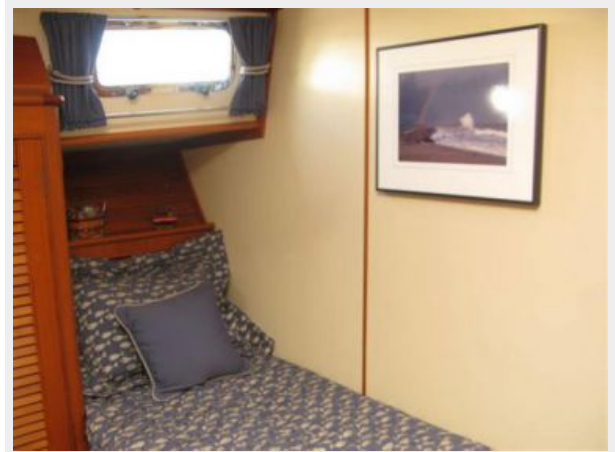
Master Stall Shower



Guest Cabin



Guest Berth



Guest Cabin Aft Berth



Guest Head



Cockpit Aft Facing Double Settee



Cockpit



Pilothouse and Side deck Access



Cockpit Deck Chairs



Cockpit Arrangement



Fore and Side Decks



Anchor, Davit and Windlass



Light Boards



Dorades and Mast



Engine Room



CAT C-12



Dual Racors



Stern Lights Generator With Enclosure



Profile



Stern Quarter



CONTACTS

Andrey Shestakov, leading yacht broker of the sales department of Shestakov Yacht Sales Inc. Shestakov Yacht Sales Inc., the official representative of the Miami/Fort Lauderdale FL headquarters.

Contact details

Email: andrey@shestakovyachtsales.com

Web: shestakovyachtsales.com/en/

Telephones

USA: +1(954)274-4435

Office hours

Monday – Saturday: **9:00 - 21:00** EDT

Sunday: **closed**

Address



Harbour Towne Marina, 850 NE 3rd St,
STE 213, Dania, FL 33004