

OUR TRADE — VIKING



Builder: VIKING

Year Built: 2007

Model: Motor Yacht

Price: PRICE ON APPLICATION

Location: United States

LOA: 64' 0" (19.51m)

Beam: 19' 2" (5.84m)

Min Draft: 5' 2" (1.57m)

Our experienced yacht broker, Andrey Shestakov, will help you choose and buy a yacht that best suits your needs **OUR TRADE — VIKING** from our catalogue. Presently, at Shestakov Yacht Sales Inc., we have a wide variety of yachts available on our sale's list. We also work in close contact with all the big yacht manufacturers from all over the world.

If you would like to buy a yacht **OUR TRADE — VIKING** or would like help answering any questions concerning purchasing, selling or chartering a yacht, please call **+1(954)274-4435**

TABLE OF CONTENTS

TABLE OF CONTENTS	2
SPECIFICATIONS	6
Overview	6
Basic Information	6
Dimensions	6
Accommodations	6
Hull and Deck Information	6
Engine Information	6
DETAILED INFORMATION	7
Remarks	7
Salon	7
Galley	8
Companionway	8
Master Stateroom	8
Master Head	9
Forward Guest Stateroom	9
Forward Guest Head	9
Starboard Guest Stateroom	10
Starboard Guest Head	10
Starboard Aft Guest Stateroom	10
Flybridge	10
Electronics	11
Cockpit	12
Tower	13
Engine Room	13
Bilge	14
Deck and Exterior	14
Hull	15

Decor	15
Exclusions	15
Disclaimer	15
Exclusions	16
Disclaimer	16
PHOTOS	17
Profile	17
Profile	17
Profile	17
Profile	17
Profile	17
Profile	17
Profile	18
Profile	18
Salon	18
Salon and Galley	18
Salon and Galley	18
Salon TV	18
Salon	19
Salon, Dinette and Galley	19
Dinette	19
Dinette	19
Dinette	19
Dinette	19
Galley	20
Galley	20
Galley	20
Galley	20
Master Stateroom	20

Master Stateroom	20
Master Stateroom	21
Master Stateroom	21
Master Head	21
VIP Stateroom	21
VIP Head	22
VIP Head	22
Starboard Guest Stateroom	22
Starboard Guest Stateroom	22
Guest Head	23
Guest Head	23
Guest Head	23
Starboard Aft Guest Stateroom	23
Starboard Guest Aft Stateroom	24
Flybridge	24
Bridge Helm and Chairs	24
Helm	24
Bridge Helm Chairs	24
Flybridge Helm Electronics	24
Flybridge Helm Electronics	25
Flybridge Helm Electronics	25
Teaser reel	25
Flybridge Seating	25
Cockpit and Fighting Chair	25
Cockpit and Fighting Chair	25
Cockpit	26
Cockpit Tackle Storage	26
Dryer	26
Washer	26

Custom Rod Locker	27
Guest Closet	27
Tower	27
Bow Pulpit	27
Tower	28
Engine Room	28
Engine Room	28
Engine Room	28
Engine Room	28
Engine Room	28
Engine Room	29
Engine Room	29
Engine Room	29
Engine Room	29
Engine Room	29
Engine Room	29
Engine Room	30
Engine Room	30
Engine Room	30
CONTACTS	31
Contact details	31
Telephones	31
Office hours	31
Address	31

SPECIFICATIONS

Overview

Galati Yacht Sales has been committed to exceeding the expectations of its customers for more than 42 years, and we understand that purchasing a boat is a big decision. Our professional staff is here to assist you in every way – before, during and after the sale. Please feel free to contact us with any questions that you may have.

Basic Information

Category: Motor Yacht

Sub Category: Convertible

Model Year: 2007

Year Built: 2007

Country: United States

Dimensions

LOA: 64' 0" (19.51m)

Beam: 19' 2" (5.84m)

Min Draft: 5' 2" (1.57m)

Accommodations

Total Cabins: 4

Hull and Deck Information

Hull Material: Fiberglass

Engine Information

Manufacturer: Caterpillar

Model: C-32A

DETAILED INFORMATION

Remarks

CAT Platinum Plus Warranty until 6/20/2016 or 3,325 hours This is the only open bridge, four stateroom, Cat powered 64' Viking on the market today. She is in mint condition and features a PBT Tower, AME Electronics, Release Marine chair package, two generators, and misters in the cockpit. This is a must see 64' Viking and will out show any other 64' in the market place.

Salon

- Carpet runner, full, canvas
- Companionway, Costa, canvas carpet runner with step covers
- Channel Plus System to run salon VCR/DVD throughout boat
- Salon door with electric door opener
- Dimmers for Quartz Lights
- Teak wire box
- Dinette dimmers on overhead low-voltage AC lights
- Teak trim where Amtico floor meets carpet
- Custom Amtico flooring at salon entranceway
- Teak dinette table and pedestal
- 42" Plasma pop-up Television
- Companionway dimmers on overhead low-voltage AC lights
- L-shaped sofa with storage in end arm
- Upgraded L-shaped sofa with rod storage
- Kenmore Clear icemaker
- Viking Home Theater upgrade
- Teak on aft side of galley island and dinette
- Teak lambrequins
- Quartz light dimmers
- Teak trim on carpet
- Teak valances
- Amtico flooring at salon entranceway
- (3) Teak shelves between salon door and Electric panel
- (2) Bar stools
- Lamp hard wired
- Teak entertainment center top
- Teak wire box
- Main electric panel up
- Air conditioning with reverse cycle heat
- Wall to wall carpeting with lead-lined padding for sound absorption
- Tinted, frameless side windows

- Overhead halogen lighting with dimmers
- Privacy blinds
- Stereo speakers

Galley

- 4-burner surface mount range
- Custom Amtico flooring in Galley
- Forward storage drawers bottoms to be clear acrylic
- Granite counter tops with stainless sink
- Trash compactor
- Stainless steel undermounted sink with matte nickel faucet
- Teak backsplash
- Custom Amtico flooring
- Electrical sub panel for galley appliances
- Exhaust fan
- Garbage disposal in sink
- Overhead halogen lights with dimmers
- Microwave/convection oven
- Large pull-out storage drawers
- (6) Sub-Zero refrigerator/freezer drawers
- 110v outlet next to switch on bottom of upper cabinet above sink
- 110v outlet above galley settee
- Instant hot water dispenser
- Watermaker remote in galley sub-panel

Companionway

- Costa canvas runner with step covers
- Rod closet with glass door and lights
- Teak strips in between panels
- Central vacuum system

Master Stateroom

- Diagonal berth
- Custom wallpaper installation
- Mattress upgrade (Queen)
- 20" flat screen television
- Dimmers on overhead low-voltage AC lights
- Overhead lights with dimmer switches
- Hanging locker

- Safe under lift-up bed top
- DVD player
- Quilted designer style bedspread
- Carpeting
- Entry credenza with storage drawers
- Pillow shams
- Reading lights

Master Head

- Mirror around upper vanity insert
- Custom Amtico flooring
- Custom Granite vanity top
- Full size head
- Satin nickel fixtures
- Custom wallpaper
- Vanity with lower teak face
- One piece custom frameless shower door
- Exhaust Fan in shower

Forward Guest Stateroom

- Mirror around upper vanity insert
- Custom Amtico flooring
- Custom Granite vanity top
- Full size head
- Satin nickel fixtures
- Custom wallpaper
- Vanity with lower teak face
- One piece custom frameless shower door
- Exhaust Fan in shower

Forward Guest Head

- Custom wallpaper installation
- Mirror around upper vanity insert
- Custom Amtico flooring
- Custom Granite vanity top
- Full size head
- Mirror ceiling
- Nickel shower fixtures
- Nickel faucet

Starboard Guest Stateroom

- Additional television outlet
- Custom wallpaper installation
- Upgraded mattresses
- Dimmers on overhead low-voltage AC lights
- 15" flat screen TV
- DVD player

Starboard Guest Head

- Custom wallpaper installation
- Mirror around upper vanity insert
- Custom Granite vanity top
- Full size head
- Nickel towel bars and ring
- Nickel faucet
- Exhaust fan in shower

Starboard Aft Guest Stateroom

- Side-by-side bunks
- Additional television outlet
- Custom wallpaper installation
- Dimmers on overhead low-voltage AC lights
- Upgraded mattresses
- Sharp 15" flat screen TV
- DVD player

Flybridge

- Recessed electric teaser reels
- Custom drop down radio box
- CAT trolling valves
- CAT single lever controls for pod
- Recessed electronics boxes
- Moritz monitor, VHF Radio ICOM-604
- Furuno digital depth display
- Fresh water outlet on bridge
- Flybridge cushions are drip dry foam
- Horns mounted under bridge for clean look
- Removable jumpseat backrest

- Single lever control handles
- Release Marine helm chairs
- Hand rail above helm access door
- Engine displays are mounted in overhead box
- Oversized flybridge refrigeration/freezer storage forward of helm
- Air horns
- Dual thermostat for chill box and freezer
- White trim tab switch

Electronics

- **Radar System**
- Furuno FAR2127BB 25KW Commercial Radar with 8' Array
- 17" VEI LCD Monitor
- **Primary Navigation System**
- VEI 24VDC Marine Computer
- Windows XP
- RF Mouse
- Mini RF Keyboard
- Nobletec Visual Nav software
- 17" VEI Sun LCD Monitor
- VGA splitter
- GP-37 GPS WAAS receiver
- **Secondary Navigation System**
- Northstar 952 GPS Chartplotter
- **Color Video Sounder**
- Furuno FCV-1200BB Black Box Color Video Sounder
- 17" VEI LCD Sun monitors
- Furuno 50khz transducer
- Furuno 200 khz transducer
- Output switch to view on salon TV and helm monitors
- **Secondary Depth/ High Precision Temp**
- Furuno RD-30
- Furuno 235khz transducer
- **Autopilot**
- Furuno FAP511
- **VHF Communications**
- (2) ICOM 602 VHF
- ICOM remote mic kit
- Shakespeare 17' 6" VHF antenna
- Icom external speaker
- ICOM OPS-999 command mic in salon
- **Satellite TV System**

- KVH TVG4 18" Satellite TV Dish
- KVH HD converter Box
- Digital Quad Modulator
- Amplified multi-switch
- UPS Back-up
- IR remote system
- **Camera System**
- Lathamcam 200DW High res 2mm Lathamcam with polarized lens
- **Underwater Lights**
- (4) Deep Sea HID-X 110V underwater lights (2- out the transom and 2 down)
- **Tower**
- Furuno RD40 digital depth/temp
- ICOM HM-127 command mic
- **Stereo**
- Clarion CMD4 CD player, FM player
- Clarion Sirius Satellite radio module
- Clarion wired remote control with display
- Shakespeare SRA-40 low profile antenna
- (2) JL Audio 7.7" component speaker pairs with separate tweeters
- JL Audio amplifier

Cockpit

- Live well in sole
- Transom coaming with lift gate
- Hand rail on both sides of door
- (6) Screwless Release Marine rod holders in covering boards
- Stainless steel gas pistons for all mezzanine boxes
- Livewell in sole
- Refrigerated cockpit step box
- Upgraded Bose 151 cockpit speakers
- (2) 50 amp shore chords with Cablemasters
- Port and starboard fiberglass molded cockpit storage boxes below gunwale
- Refrigerated port mezzanine undermounted box
- Mezzanine Cockpit
- Ice machine with discharge into cockpit sole box
- Awlgrip Lazarette
- Custom large Release Marine fighting chair
- Rupp "Big Rig" triple spreader outriggers
- Center rigger
- Additional freezer in mezzanine
- Cockpit circulation blowers in haunches tied into bridge AC
- Misters in cockpit overhang

- Mister under cockpit coaming
- Mister head in center of haunch blower
- 2 Cockpit covers - One storage one full sun shade

Tower

- 9' Gap, brushed pipe
- (2) Antenna stand-offs
- (2) Halyards
- 3-sided track to track slide on Bimini rail
- 3" front legs
- 12 Systems recessed lights (6) Blue recessed lights with fiberglass recess
- Large, oval style radar pod with sliding door and bracket for teaser reels
- Molded standing platform with coupler box on platform
- Molded 110v quartz light pod with stainless bezel
- 110v quartz light forward
- 60" Control box with flush mounted compass
- Tower sunshade molded with painted center oval center tube, 4-welded antenna mounts
- Antenna bracket for SAT dome
- 3-sided double aft bridge rail mounted to outer legs
- (8) tear-drop style polished rod holders welded to aft bridge rail
- Electronic CAT controls and steering
- (2) Miya Epoch Super US9 teaser reels with remotes
- 43' triple spreader, Pipewelders outriggers with solid aft bar
- Rigger locks
- Pipewelders center rigger
- Freshwater washdown in tower
- 3-sided Strataglass enclosure
- Powder coated flangeless track
- (3) air vents at the top of the panels
- U-zip forward
- Bench seat with backrest
- Molded nav lights
- Molded stern light
- Electric fold down interment box
- Flag staff aft
- CAT engine displays mounted in drop down box
- (2) Blue LED lights in tower sunshade

Engine Room

- **CAT Platinum Plus Warranty until 6/20/2016 or 3,325 hours**

- Onan 27kW generator
- Additional 21.5KW generator
- Watermaker, 1200 GPD with back flush
- Remote control panel at salon electrical panel for the watermaker
- Generator gas-water separator for standard generator
- Generator gas-water separator for optional generator
- Awlgrip brass thru-hulls and sea strainers in engine room and forward bilges
- Dual power steering pumps on port engine
- Headhunter Fresh Water Pump
- Shelf over standard generator
- Clear acrylic shaft log access covers
- Tool Box, 4 drawer, 16" wide, painted white
- Back up AC pump
- All pumps painted Snow White except fresh water pump
- Clear acrylic shaft log
- Gas/water separator for main generator and optional generator
- Tee in dockside water manifold
- Snow white fuel filters
- Underwater exhaust system
- Oil change system
- Back-up fuel transfer pump in parallel
- Magnetic switches for all bilge lights
- Back-up seawater pump for A/C system
- 110V outlet on aft bulkhead at entranceway
- Shelf over primary generator
- Eskimo Ice Maker
- Delta T ventilation system
- Entrance Gauge package
- External sea strainer
- Fire suppression system
- Fresh water supply
- Freshwater isolation manifold system
- Fuel priming pumps for main engines

Bilge

- Awlgrip anchor locker
- Magnetic switches for all bilge lights

Deck and Exterior

- Bow Pulpit
- Lewmar V4 SS Windlass (gypsy and drum)

- Paint rub rail to match gel coat
- Recessed trim tab covers
- Freshwater washdown in anchor locker
- Rub rail painted to match gelcoat
- 1 ¼" heavy stock bow rail

Hull

- Bow Pulpit
- Lewmar V4 SS Windlass (gypsy and drum)
- Paint rub rail to match gel coat
- Recessed trim tab covers
- Freshwater washdown in anchor locker
- Rub rail painted to match gelcoat
- 1 ¼" heavy stock bow rail

Decor

- Premier Edition Décor
- Upgraded style sofa
- Wrapped hatch carpet installation
- Custom wallpaper material & installation
- Custom Headliner material throughout: Baby Ostrich
- Bar stools with backs

Exclusions

- Art work in Master Stateroom/Head
- Art work in Master bath and day head
- Rods/tackle
- Bronze sculptures
- Owner's Personal Property

Disclaimer

The Company offers the details of this vessel in good faith but cannot guarantee or warrant the accuracy of this information nor warrant the condition of the vessel. A buyer should instruct his agents, or his surveyors, to investigate such details as the buyer desires validated. This vessel is offered subject to prior sale, price change, or withdrawal without notice.

Exclusions

Owner's personal belongings.

Disclaimer

The Company offers the details of this vessel or yacht in good faith but cannot guarantee or warrant the accuracy of this information nor warrant the condition of the vessel. A buyer should instruct his representatives, agents, or his surveyors, to investigate such details as the buyer desires validated. This vessel or yacht is offered subject to prior sale, price change, or withdrawal without notice.

PHOTOS

Profile



Profile



Profile



Profile



Profile



Profile



Profile



Profile



Salon



Salon and Galley



Salon and Galley



Salon TV



Salon



Salon, Dinette and Galley



Dinette



Dinette



Dinette



Dinette



Galley



Galley



Galley



Galley



Master Stateroom



Master Stateroom



Master Stateroom



Master Stateroom



Master Head



VIP Stateroom



VIP Head



VIP Head



Starboard Guest Stateroom



Starboard Guest Stateroom



Guest Head



Guest Head



Guest Head



Starboard Aft Guest Stateroom



Starboard Guest Aft Stateroom



Flybridge



Helm



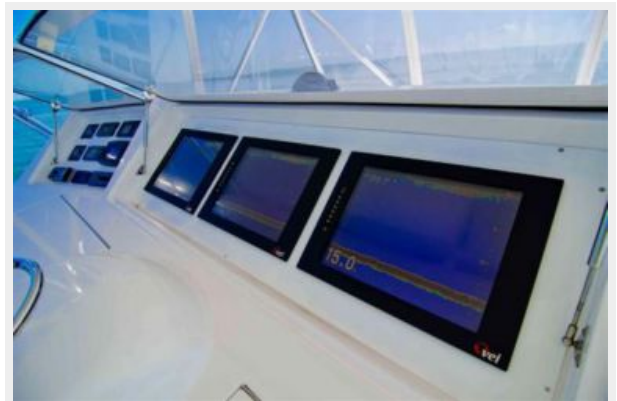
Bridge Helm and Chairs



Bridge Helm Chairs



Flybridge Helm Electronics



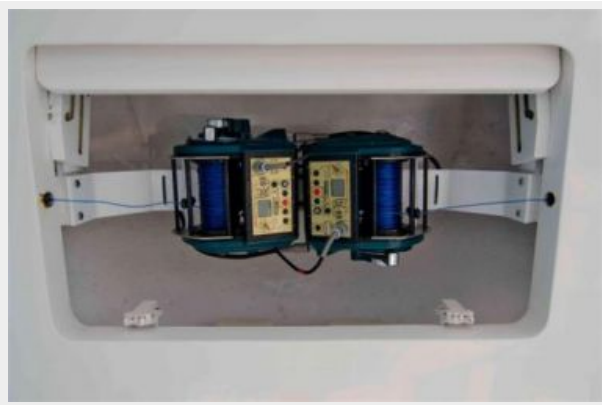
Flybridge Helm Electronics



Flybridge Helm Electronics



Teaser reel



Flybridge Seating



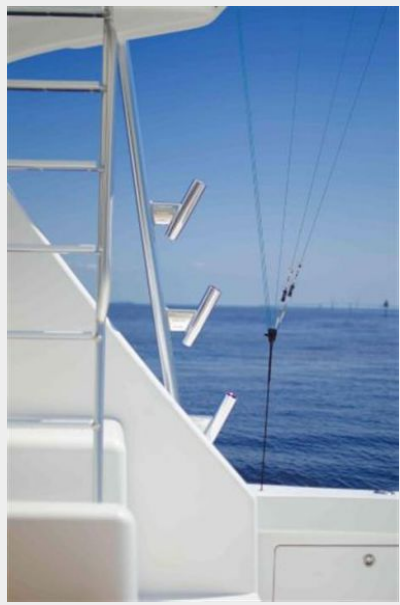
Cockpit and Fighting Chair



Cockpit and Fighting Chair



Cockpit



Cockpit Tackle Storage



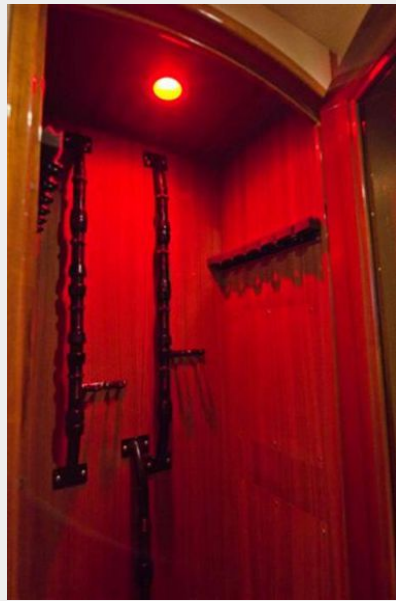
Dryer



Washer



Custom Rod Locker



Guest Closet



Tower



Bow Pulpit



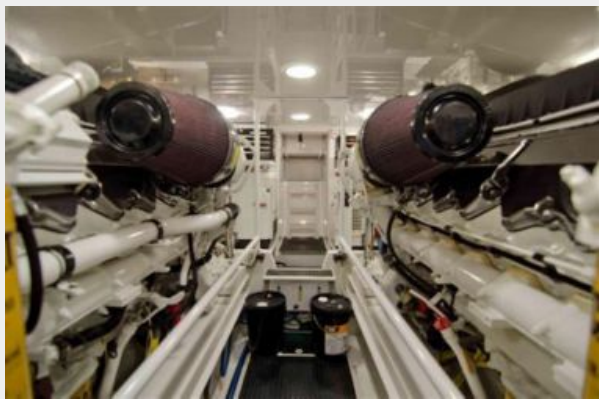
Tower



Engine Room



Engine Room



Engine Room



Engine Room



Engine Room



Engine Room



Engine Room



Engine Room



Engine Room



Engine Room



Engine Room



Engine Room



Engine Room



Engine Room



CONTACTS

Andrey Shestakov, leading yacht broker of the sales department of Shestakov Yacht Sales Inc. Shestakov Yacht Sales Inc., the official representative of the Miami/Fort Lauderdale FL headquarters.

Contact details

Email: andrey@shestakovyachtsales.com

Web: shestakovyachtsales.com/en/

Telephones

USA: +1(954)274-4435

Office hours

Monday – Saturday: **9:00 - 21:00** EDT

Sunday: **closed**

Address



Harbour Towne Marina, 850 NE 3rd St,
STE 213, Dania, FL 33004