

NICEST 41' ON THE MARKET!! — HATTERAS



Builder: HATTERAS

Year Built: 1986

Model: Sport Fisherman

Price: PRICE ON APPLICATION

Location: United States

LOA: 41' 0" (12.50m)

Beam: 14' 3" (4.34m)

Max Draft: 4' 4" (1.32m)

Cruise Speed: 22 Kts. (25 MPH)

Max Speed: 26 Kts. (30 MPH)

Our experienced yacht broker, Andrey Shestakov, will help you choose and buy a yacht that best suits your needs **NICEST 41' ON THE MARKET!! — HATTERAS** from our catalogue. Presently, at Shestakov Yacht Sales Inc., we have a wide variety of yachts available on our sale's list. We also work in close contact with all the big yacht manufacturers from all over the world.

If you would like to buy a yacht **NICEST 41' ON THE MARKET!! — HATTERAS** or would like help answering any questions concerning purchasing, selling or chartering a yacht, please call **+1(954)274-4435**

TABLE OF CONTENTS

TABLE OF CONTENTS	2
SPECIFICATIONS	4
Basic Information	4
Dimensions	4
Speed, Capacities and Weight	4
Accommodations	4
Hull and Deck Information	4
Engine Information	5
DETAILED INFORMATION	6
Vessel walkthrough	6
COCKPIT	6
Flybridge	7
Tuna Tower	7
Salon	8
Galley	8
Master Stateroom	8
Guest Stateroom	9
Electrical System	9
Engine/Mechanical Equipment	9
Deck & Fishing Equipment	10
Safety & Fire Protection	10
Remarks	10
EXCLUSIONS	11
Exclusions	11
Disclaimer	11
PHOTOS	12
Bow	13
Helm Chairs	14

Arrangement	19
CONTACTS	20
Contact details	20
Telephones	20
Office hours	20
Address	20

SPECIFICATIONS

Basic Information

Category: Sport Fisherman

Sub Category: Sport Fisherman

Model Year: 1986

Year Built: 1986

Country: United States

Dimensions

LOA: 41' 0" (12.50m)

Beam: 14' 3" (4.34m)

Max Draft: 4' 4" (1.32m)

Speed, Capacities and Weight

Cruise Speed: 22 Kts. (25 MPH)

Max Speed: 26 Kts. (30 MPH)

Displacement: 35400 Pounds

Water Capacity: 150 Gallons

Fuel Capacity: 500 Gallons

Accommodations

Total Cabins: 2

Total Berths: 3

Total Heads: 1

Hull and Deck Information

Hull Material: Fiberglass

Engine Information

Engines: 2

Manufacturer: Detroit Diesel

Model: 6v71TI

Engine Type: Inboard

Fuel Type: Diesel

DETAILED INFORMATION

Vessel walkthrough

The Hatteras 41C was the beginning of a new look that changed the way sportfish were built forever. With the Rakish bridge and stepped sheer line the 41' Hatteras exterior lines are timeless. Now go onboard and you'll find 125 square feet of cockpit that means business. With all the standard fishing needs met you sacrifice nothing while onboard this Hatteras.

COMPLETELY REMODELED INTERIOR WITH NEW FURNISHINGS Stepping inside the salon you are surrounded by 132 square feet of Hatteras luxury. Teak Bulkheads and sole give this salon a warm rich feel. An couch is located on the starboard bulkhead with a bench seat and bar looking out to the cockpit and directly forward is a built in entertainment center. The galley is located along the port side bulkhead and is stocked with all the necessary equipment for extended cruising. A functional galley without looking like a kitchen. Directly forward of the Galley is a built in cabinet that houses a microwave oven. Forward of the galley and down three steps, to starboard you find a comfortable guest stateroom with upper and lower berths. The guest stateroom is equipped with a nightstand, combination dresser and locker, mirror and ample storage. Directly across the companion way is the head. This well appointed head offers the space and luxury of larger boats. Inside you will find a clear safety glass stall shower, mirrored cabinet, a cultured marble counter with a molded sink and storage cabinets below. Exiting the head in the companion way all the way forward is the owners stateroom. Surrounded in rich teak the owners stateroom has a walkaround island queen berth that maximizes the roominess without minimizing your need for comfort and peace of mind. There are twin dressers and closets with full length mirrors on both port and starboard sides of the stateroom. Private access to the head is located on the port aft bulkhead. Plenty of storage and surface areas are skillfully located throughout the cabin for extreme comfort during extended cruising.

COCKPIT

Installed options and details listed below:

- Pompanette Teak Reverse Rocket Launcher
- Bait Freezer
- Bait Prep Station
- Fish Box
- Transom Door
- Boarding Step Box
- Cockpit Lighting
- Cockpit Spreader Lights
- Cockpit Sink
- Salt and Fresh Water Washdown
- Dockside Fresh Water Connection

- Dockside TV Connection
- Dockside Telephone Connection
- Dockside Shore Power Connection
- Swim Ladder

Flybridge

Installed options and details listed below:

- Hydraulic Steering
- Rudder Master MarkV RAI Rudder Angle Indicator
- Engine Gauges
- Engine Start and Stop Switches
- Horn Switch
- Danforth Compass
- Fuel Shut off Valve
- Engine Room Halon Override
- Bilge Pump Controls
- USS High Water Alarm
- Trim Tabs
- Engine Synchronizer
- Engine Room Blower Indicators
- Instrument Panel Lighting
- Simrad Robertson AP22 Auto Pilot
- Furuno Color Video Sounder FCV292
- Furuno NavNet Radar, GPS Plotter, Sounder
- SIRRUS Sportster Satellite Radio
- Sony AM/FM CD Player
- Icom VHF with DSC IGM402
- Cup Holders
- 2 Helm Chairs
- Portside and Forward Padded Seating

Tuna Tower

Installed options and details listed below:

- Hydraulic Steering
- Engine Controls
- Trim Tab Controls
- Newmar Seacom Intercom
- Rpm Gauges
- Padded Bolster

- Padded Seating

Salon

Installed options and details listed below:

- Cabinets
- Couch
- Entertainment Center
- Teak Sole
- Teak Bulkheads
- Drapes
- Blinds
- Icemaker
- Sharp Aquos 22" LCD Television
- Coby DVD Player
- Stereo
- Stereo speaker zone selector switch

Galley

Installed options and details listed below:

- Oak Cabinets
- Granite Counter with Teak Accents
- Drawers
- Sink
- Galleymaid "Empress" Stove and Range
- Magic Chef Microwave
- Avanti Refrigerator/Freezer

Master Stateroom

Installed options and details listed below:

- Queen Island Berth
- Teak Joinery
- Berber Style Carpet
- 2 Hanging Closets
- Dressers with Drawers
- Air Conditioning
- Magnavox Television

- Newmar Seacom Intercom
- Full length Mirrors
- Private Access to the Head
- Anchor Locker Access

Guest Stateroom

Installed options and details listed below:

- Upper and Lower Berths
- Teak Joinery
- Berber Style Carpet
- Air Conditioning
- Hanging Locker
- Mirror
- Drawers

Electrical System

Installed options and details listed below:

- 12 Volt DC House Power
- 110/220 Volt AC Power
- 110/220 Volt Dockside Shore Power
- 220 Volt 50 Amp Shore Cable
- Onan 8kw Generator w/ appx 3000 hours
- Hull bonding/grounding system
- Battery Charger
- Battery Parallel Switch
- Hot Water Heater
- Fresh Water Pump

Engine/Mechanical Equipment

Installed options and details listed below:

- 2 Detroit 6v71 TI with appx 800 hours SMOH
- Air Conditioning
- Engine Room Blowers
- Engine Block Heaters
- Engine Synchronizes
- Halon Fire Suppression System

- Fuel Cross Over Valves
- Fuel Shut Off Valves
- Walker Air Seps
- Sea Water Strainers
- Engine Alarms
- Racor Fuel Filters
- Engine Room Lighting

Deck & Fishing Equipment

Installed options and details listed below:

- Pipewelders Full Tower with Controls
- Rupp Outriggers with lift out bases
- Rupp Center Rigger
- 6 Rod Holders
- Fortress Anchor with Chain
- Anchor Windlass
- Fenders and Lines
- Bow Pulpit
- Bow Rails
- Grab Rails

Safety & Fire Protection

Installed options and details listed below:

- Automatic/Manual Bilge Pumps
- Engine Room Fire Suppression System
- Navigation Lights
- 6 Man Life Raft
- High Water Alarms
- Engine Alarms
- Horn
- VHF Radio W/ DSC

Remarks

Don't miss this opportunity to buy a Rock Solid 41' Convertible Hatteras. She is sure to stand out anywhere with her flawless styling and quality construction. Many recent upgrades and low hours on very reliable 6V71's. You'll enjoy true "Pride of Ownership" when you purchase a Hatteras like "Destiny II." If you are in the market for a Quality Hatteras, Don't Let This Slip By! She is easy

to see 7 days a week. Schedule your appointment today.

EXCLUSIONS

Owners personal items. A list will be provided upon request.

Exclusions

Owner's personal belongings.

Disclaimer

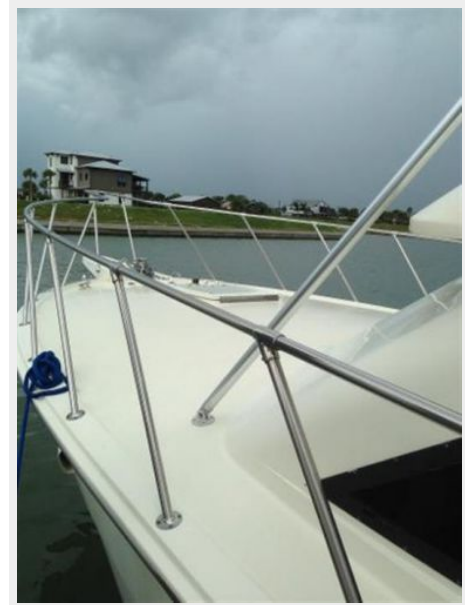
The Company offers the details of this vessel or yacht in good faith but cannot guarantee or warrant the accuracy of this information nor warrant the condition of the vessel. A buyer should instruct his representatives, agents, or his surveyors, to investigate such details as the buyer desires validated. This vessel or yacht is offered subject to prior sale, price change, or withdrawal without notice.

PHOTOS





Bow

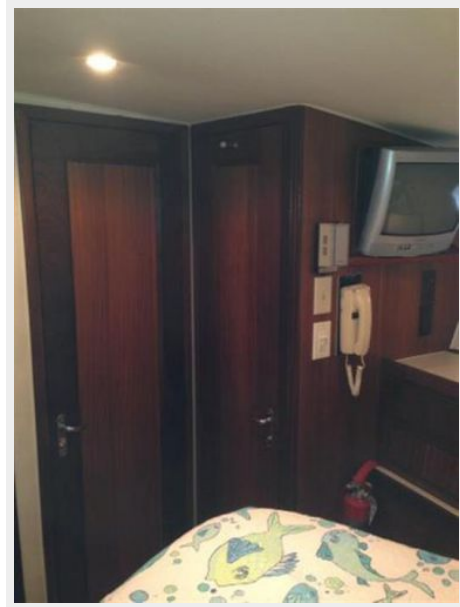


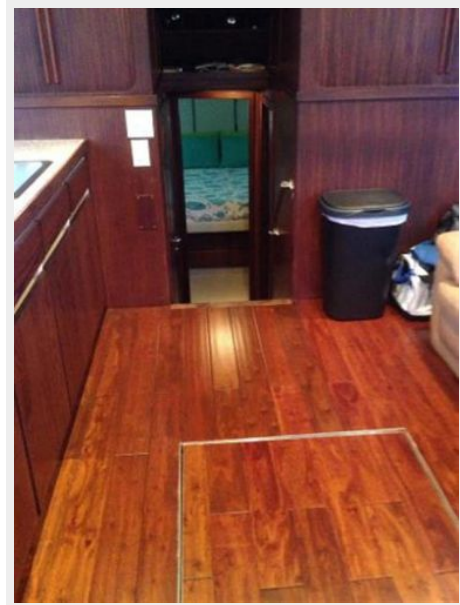
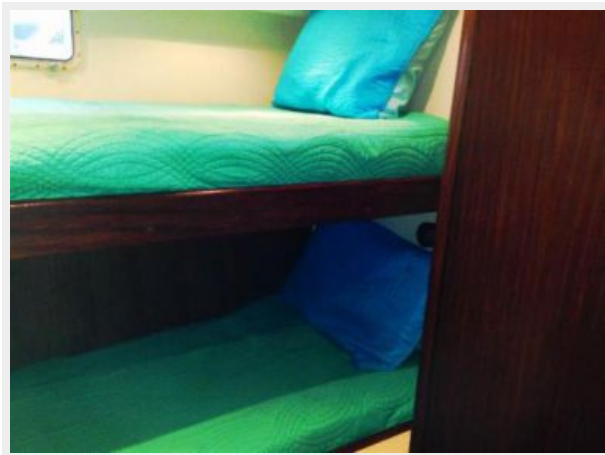


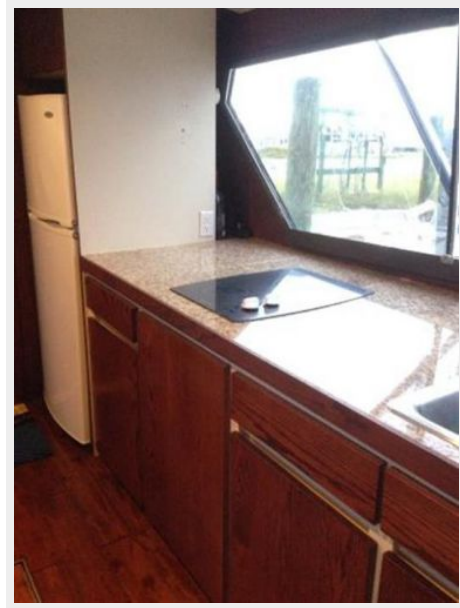
Helm Chairs



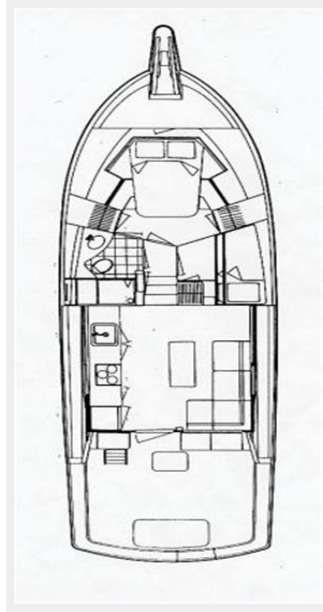








Arrangement



CONTACTS

Andrey Shestakov, leading yacht broker of the sales department of Shestakov Yacht Sales Inc. Shestakov Yacht Sales Inc., the official representative of the Miami/Fort Lauderdale FL headquarters.

Contact details

Email: andrey@shestakovyachtsales.com

Web: shestakovyachtsales.com/en/

Telephones

USA: +1(954)274-4435

Office hours

Monday – Saturday: **9:00 - 21:00** EDT

Sunday: **closed**

Address



Harbour Towne Marina, 850 NE 3rd St,
STE 213, Dania, FL 33004