

NICEST 41' ON THE MARKET!! — HATTERAS



Судостроитель: HATTERAS

Год постройки: 1986

Модель: Катер для спортивной рыбалки

Цена: ЦЕНА ЯХТЫ ПО ЗАПРОСУ

Местонахождение: United States

Длина общая: 41' 0" (12.50m)

Ширина: 14' 3" (4.34m)

Макс. осадка: 4' 4" (1.32m)

Крейс. скорость: 22 Kts. (25 MPH)

Макс. скорость: 26 Kts. (30 MPH)

Купить **NICEST 41' ON THE MARKET!! — HATTERAS** а также выбрать подходящую вам яхту из нашего каталога яхт вам поможет опытный яхтенный брокер Андрей Шестаков. На сегодняшний день компания **Shestakov Yacht Sales Inc.** имеет большое количество яхт в собственном списке продаж, а также тесно сотрудничает со всеми крупными яхтенными производителями по всему миру.

Для того чтобы купить яхту **NICEST 41' ON THE MARKET!! — HATTERAS** а также проконсультироваться по любому вопросу связанному с покупкой, продажей, чартером яхт позвоните по телефону **+7(918)465-66-44**.

ОГЛАВЛЕНИЕ

ОГЛАВЛЕНИЕ	2
ХАРАКТЕРИСТИКИ	4
Основная информация	4
Размеры	4
Скорость, вместимость и масса	4
Размещение	4
Корпус и палуба	4
Информация о двигателе	5
ПОДРОБНОЕ ОПИСАНИЕ	6
Vessel walkthrough	6
СОСКРИТ	6
Flybridge	7
Tuna Tower	7
Salon	8
Galley	8
Master Stateroom	8
Guest Stateroom	9
Electrical System	9
Engine/Mechanical Equipment	9
Deck & Fishing Equipment	10
Safety & Fire Protection	10
Remarks	10
EXCLUSIONS	11
Исключения	11
Отказ от ответственности	11
ФОТОГРАФИИ	12
Bow	13
Helm Chairs	14

Arrangement	19
КОНТАКТЫ	20
Контактная информация	20
Телефоны	20
Время работы	20
Адрес	20

ХАРАКТЕРИСТИКИ

Основная информация

Тип судна: Катер для спортивной рыбалки

Подкатегория: Катер для спортивной рыбалки

Модельный год: 1986

Год постройки: 1986

Страна: United States

Размеры

Длина общая: 41' 0" (12.50m)

Ширина: 14' 3" (4.34m)

Макс. осадка: 4' 4" (1.32m)

Скорость, вместимость и масса

Крейс. скорость: 22 Kts. (25 MPH)

Макс. скорость: 26 Kts. (30 MPH)

Водоизмещение: 35400 Pounds

Вместимость воды: 150 Gallons

Объем топливного бака: 500 Gallons

Размещение

Всего кают: 2

Всего коек: 3

Всего ком. состава: 1

Корпус и палуба

Материал корпуса: Fiberglass

Информация о двигателе

Двигатели: 2

Производитель: Detroit Diesel

Модель: 6v71T1

Тип двигателя: Inboard

Тип топлива: Diesel

ПОДРОБНОЕ ОПИСАНИЕ

Vessel walkthrough

The Hatteras 41C was the beginning of a new look that changed the way sportfish were built forever. With the Rakish bridge and stepped sheer line the 41' Hatteras exterior lines are timeless. Now go onboard and you'll find 125 square feet of cockpit that means business. With all the standard fishing needs met you sacrifice nothing while onboard this Hatteras.

COMPLETELY REMODELED INTERIOR WITH NEW FURNISHINGS Stepping inside the salon you are surrounded by 132 square feet of Hatteras luxury. Teak Bulkheads and sole give this salon a warm rich feel. An couch is located on the starboard bulkhead with a bench seat and bar looking out to the cockpit and directly forward is a built in entertainment center. The galley is located along the port side bulkhead and is stocked with all the necessary equipment for extended cruising. A functional galley without looking like a kitchen. Directly forward of the Galley is a built in cabinet that houses a microwave oven. Forward of the galley and down three steps, to starboard you find a comfortable guest stateroom with upper and lower berths. The guest stateroom is equipped with a nightstand, combination dresser and locker, mirror and ample storage. Directly across the companion way is the head. This well appointed head offers the space and luxury of larger boats. Inside you will find a clear safety glass stall shower, mirrored cabinet, a cultured marble counter with a molded sink and storage cabinets below. Exiting the head in the companion way all the way forward is the owners stateroom. Surrounded in rich teak the owners stateroom has a walkaround island queen berth that maximizes the roominess without minimizing your need for comfort and peace of mind. There are twin dressers and closets with full length mirrors on both port and starboard sides of the stateroom. Private access to the head is located on the port aft bulkhead. Plenty of storage and surface areas are skillfully located throughout the cabin for extreme comfort during extended cruising.

COCKPIT

Installed options and details listed below:

- Pompanette Teak Reverse Rocket Launcher
- Bait Freezer
- Bait Prep Station
- Fish Box
- Transom Door
- Boarding Step Box
- Cockpit Lighting
- Cockpit Spreader Lights
- Cockpit Sink
- Salt and Fresh Water Washdown
- Dockside Fresh Water Connection

- Dockside TV Connection
- Dockside Telephone Connection
- Dockside Shore Power Connection
- Swim Ladder

Flybridge

Installed options and details listed below:

- Hydraulic Steering
- Rudder Master MarkV RAI Rudder Angle Indicator
- Engine Gauges
- Engine Start and Stop Switches
- Horn Switch
- Danforth Compass
- Fuel Shut off Valve
- Engine Room Halon Override
- Bilge Pump Controls
- USS High Water Alarm
- Trim Tabs
- Engine Synchronizer
- Engine Room Blower Indicators
- Instrument Panel Lighting
- Simrad Robertson AP22 Auto Pilot
- Furuno Color Video Sounder FCV292
- Furuno NavNet Radar, GPS Plotter, Sounder
- Sirtus Sportster Satellite Radio
- Sony AM/FM CD Player
- Icom VHF with DSC IGM402
- Cup Holders
- 2 Helm Chairs
- Portside and Forward Padded Seating

Tuna Tower

Installed options and details listed below:

- Hydraulic Steering
- Engine Controls
- Trim Tab Controls
- Newmar Seacom Intercom
- Rpm Gauges
- Padded Bolster

- Padded Seating

Salon

Installed options and details listed below:

- Cabinets
- Couch
- Entertainment Center
- Teak Sole
- Teak Bulkheads
- Drapes
- Blinds
- Icemaker
- Sharp Aquos 22" LCD Television
- Coby DVD Player
- Stereo
- Stereo speaker zone selector switch

Galley

Installed options and details listed below:

- Oak Cabinets
- Granite Counter with Teak Accents
- Drawers
- Sink
- Galleymaid "Empress" Stove and Range
- Magic Chef Microwave
- Avanti Refrigerator/Freezer

Master Stateroom

Installed options and details listed below:

- Queen Island Berth
- Teak Joinery
- Berber Style Carpet
- 2 Hanging Closets
- Dressers with Drawers
- Air Conditioning
- Magnavox Television

- Newmar Seacom Intercom
- Full length Mirrors
- Private Access to the Head
- Anchor Locker Access

Guest Stateroom

Installed options and details listed below:

- Upper and Lower Berths
- Teak Joinery
- Berber Style Carpet
- Air Conditioning
- Hanging Locker
- Mirror
- Drawers

Electrical System

Installed options and details listed below:

- 12 Volt DC House Power
- 110/220 Volt AC Power
- 110/220 Volt Dockside Shore Power
- 220 Volt 50 Amp Shore Cable
- Onan 8kw Generator w/ appx 3000 hours
- Hull bonding/grounding system
- Battery Charger
- Battery Parallel Switch
- Hot Water Heater
- Fresh Water Pump

Engine/Mechanical Equipment

Installed options and details listed below:

- 2 Detroit 6v71 TI with appx 800 hours SMOH
- Air Conditioning
- Engine Room Blowers
- Engine Block Heaters
- Engine Synchronizes
- Halon Fire Suppression System

- Fuel Cross Over Valves
- Fuel Shut Off Valves
- Walker Air Seps
- Sea Water Strainers
- Engine Alarms
- Racor Fuel Filters
- Engine Room Lighting

Deck & Fishing Equipment

Installed options and details listed below:

- Pipewelders Full Tower with Controls
- Rupp Outriggers with lift out bases
- Rupp Center Rigger
- 6 Rod Holders
- Fortress Anchor with Chain
- Anchor Windlass
- Fenders and Lines
- Bow Pulpit
- Bow Rails
- Grab Rails

Safety & Fire Protection

Installed options and details listed below:

- Automatic/Manual Bilge Pumps
- Engine Room Fire Suppression System
- Navigation Lights
- 6 Man Life Raft
- High Water Alarms
- Engine Alarms
- Horn
- VHF Radio W/ DSC

Remarks

Don't miss this opportunity to buy a Rock Solid 41' Convertible Hatteras. She is sure to stand out anywhere with her flawless styling and quality construction. Many recent upgrades and low hours on very reliable 6V71's. You'll enjoy true "Pride of Ownership" when you purchase a Hatteras like "Destiny II." If you are in the market for a Quality Hatteras, Don't Let This Slip By! She is easy

to see 7 days a week. Schedule your appointment today.

EXCLUSIONS

Owners personal items. A list will be provided upon request.

Исключения

При продаже яхты исключаются личные вещи владельца.

Отказ от ответственности

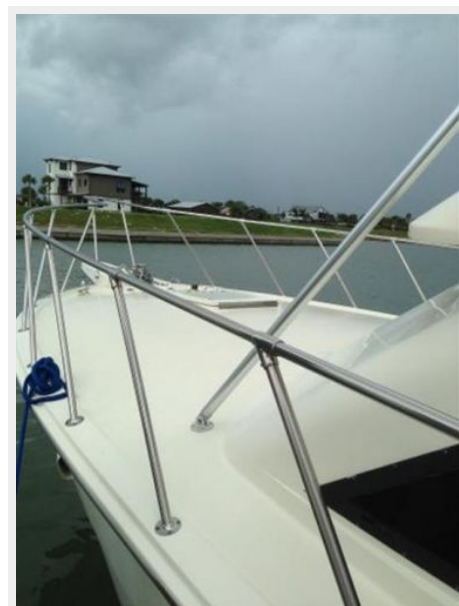
Компания предоставляет описание судна или яхты добросовестно, но не может гарантировать точность этой информации, а также не ручается за техническое состояние. Покупатель должен проинструктировать своих агентов или оценщиков исследовать представленную информацию более подробно, по собственному желанию. Продажа судна или яхты, изменение цены или снятие с продажи будет происходить без предварительного уведомления.

ФОТОГРАФИИ





Bow



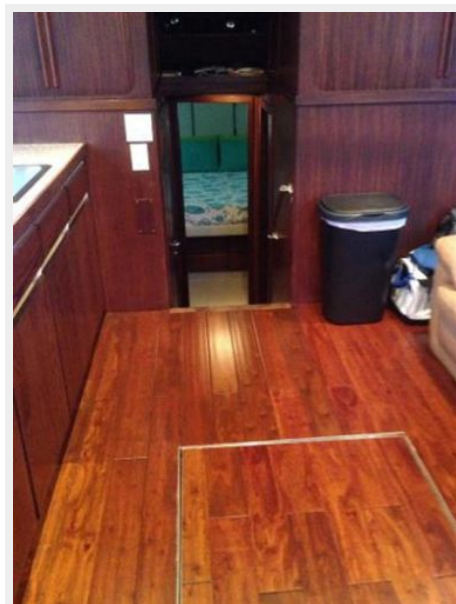
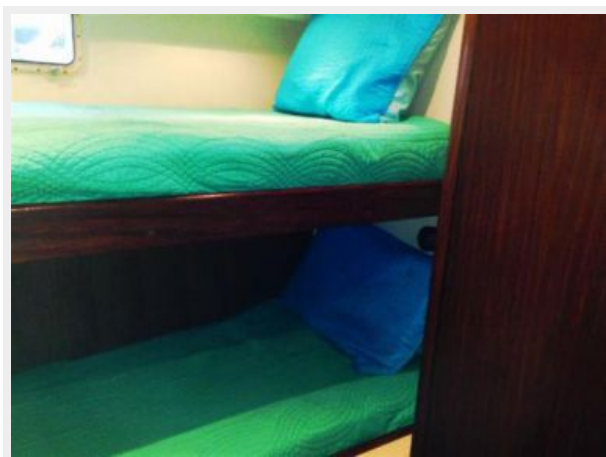


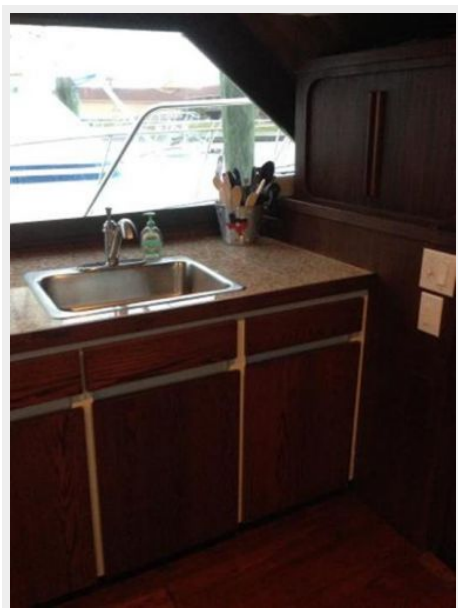
Helm Chairs



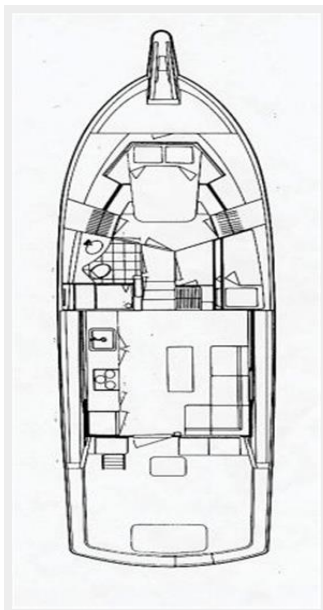








Arrangement



КОНТАКТЫ

Андрей Шестаков (Andrey Shestakov) – ведущий яхтенный брокер отдела продаж яхт и судов компании Shestakov Yacht Sales Inc. Официальный представитель Shestakov Yacht Sales Inc. для русскоговорящих клиентов в центральном офисе компании в Майами/Форт Лодердейл/Флорида/США.

Контактная информация

Email: andrey@shestakovyachtsales.com

Web: shestakovyachtsales.com

Телефоны

Краснодарский край: **+7(918)465-66-44**

США, Майами, Флорида: **+1(954)274-4435**

Время работы

Понедельник – Суббота: **9:00 - 21:00**
EDT

Воскресенье: **Закрито**

Адрес



Harbour Towne Marina, 850 NE 3rd St,
STE 213, Dania, FL 33004