

## 3 STATEROOM — CARVER



**Builder:** CARVER

**Year Built:** 2000

**Model:** Cruiser

**Price:** PRICE ON APPLICATION

**Location:** United States

**LOA:** 44' 0" (13.41m)

**Beam:** 15' 0" (4.57m)

**Max Draft:** 4' 0" (1.22m)

Our experienced yacht broker, Andrey Shestakov, will help you choose and buy a yacht that best suits your needs **3 Stateroom — CARVER** from our catalogue. Presently, at Shestakov Yacht Sales Inc., we have a wide variety of yachts available on our sale's list. We also work in close contact with all the big yacht manufacturers from all over the world.

If you would like to buy a yacht **3 Stateroom — CARVER** or would like help answering any questions concerning purchasing, selling or chartering a yacht, please call **+1(954)274-4435**

# TABLE OF CONTENTS

TABLE OF CONTENTS	2
SPECIFICATIONS	4
Basic Information	4
Dimensions	4
Speed, Capacities and Weight	4
Accommodations	4
Hull and Deck Information	4
Engine Information	5
DETAILED INFORMATION	6
Description	6
Electronics	6
Inside Equipment	6
Electrical System, DC	7
Outside Equipment/Extras	7
Electrical System, AC	7
General Information	7
Exclusions	9
Disclaimer	9
PHOTOS	10
Power sliding sunroof	10
Aft	10
Helm station	10
Aft cockpit & seating	10
Cockpit seating	10
Aft cockpit and table	10
Stairway	11
Salon	11
Lounge	11

---

Galley	11
Master stateroom	11
Vip guest	11
Bunk	12
Layout	12
CONTACTS	26
Contact details	26
Telephones	26
Office hours	26
Address	26

---

# SPECIFICATIONS

---

## Basic Information

---

**Category:** Cruiser

**Sub Category:** Express

**Model Year:** 2000

**Year Built:** 2000

**Country:** United States

## Dimensions

---

**LOA:** 44' 0" (13.41m)

**Beam:** 15' 0" (4.57m)

**Max Draft:** 4' 0" (1.22m)

**Clearance:** 10' 11" (3.33m)

## Speed, Capacities and Weight

---

**Displacement:** 30000 Pounds

**Water Capacity:** 104 Gallons

**Holding Tank:** 88 Gallons

**Fuel Capacity:** 432 Gallons

## Accommodations

---

**Total Berths:** 6

## Hull and Deck Information

---

**Hull Material:** Fiberglass

---

## Engine Information

---

**Engines:** 2

**Manufacturer:** Volvo Penta

**Model:** TAMD74EDC

**Engine Type:** Inboard

**Fuel Type:** Diesel

---

## DETAILED INFORMATION

---

### Description

---

With the Carver Trojan 440 Express, getting wet and wild just got a whole lot easier. She has a full swim platform and capable of mounting a personal water craft.

The 440 has a three-stateroom layout and an elegant cherry wood interior that's both inviting and accommodating. Forward, the master stateroom features his and her cedar-lined hanging wardrobes, a queen-sized berth, and a private head.

Aft, the portside guest suite also features a queen-sized berth, private head access and a cedar-lined hanging locker.

Starboard, the Trojan 440 Express has a third guest stateroom that features another large berth with a sliding privacy door. When it's time to catch some rays, the 440's expansive cockpit makes it easy with a wrap-around lounge, a convertible sunpad and the optional wetbar.

Forward, the sporty helm console features a Raytheon navigation package with a plotter, GPS, VHF radio, depth sounder and radar.

### Electronics

---

- Lawrence Depthsounder
- Navigation Center
- Plotter - Raytheon 601XX
- Autopilot - Raytheon Raypolit650
- Compass
- VHF Radio- Raytheon
- Radar - Raytheon R41XX
- Compass - Ritchie
- TV Sets (1 JVC & 1 Zenith)
- GPS - Raytheon NAV 398
- DVD Player
- Stereo - Clarion
- Cockpit Speaker

### Inside Equipment

---

- Electric Bilge Pump
- Air Conditioning (2 Marine Units w/ digital controls)
- Heating

- Hot Water
- Microwave Oven - Sharp
- Marine Head Master and Guest
- Refrigerator - Norcold
- Battery Charger
- Ice Maker - Uline
- Stove - Princess (2 burner) electric
- Cherry Wood Cabinets
- Sink
- L-shaped Settee/dinette
- Stereo and DVD Player

---

## Electrical System, DC

---

- Kohler Generator 9kW - 650 hours
- Batteries: (2) 8D wet cell & (1) group 31 wet cell
- Converter: Charles
- Circuits have overload protection
- Thermoplastic wiring
- Labeled Breakers

---

## Outside Equipment/Extras

---

- Cockpit Cushions
- Swimming Ladder
- Fresh Water Shower
- Cockpit Table
- Air Conditioning ( 2 Marine Units w/ digital controls)
- Isinglass Cockpit Enclosure

---

## Electrical System, AC

---

- Nominal Voltage: 120/240vac, 60hz.
- Shore Power: 120/240vac 50amp hardwired through a Cable Master unit
- Thermoplastic Wiring
- Overload Protection for circuits

---

## General Information

---

Tankage Fuel: 432 gallon Water: 104 gallon Holding: 88 gallon

## Introduction

More boat than a Sea Ray...With the Carver Trojan 440 Express, cruising became so much more comfortable. She has a full swim platform and is capable of mounting a personal water craft.

The 440 has a three-stateroom layout and an elegant cherry wood interior that's both inviting and accommodating. Forward, the master stateroom features his and her cedar-lined hanging wardrobes, a queen-sized berth, and a private head.

Aft, the portside guest suite also features a queen-sized berth, private head access and a cedar-lined hanging locker.

Starboard, the Trojan 440 Express has a third guest stateroom that features another large berth with a full, hinged privacy door.

When it's time to catch some rays, the 440's expansive cockpit makes it easy with a wrap-around lounge, a convertible sunpad and a wetbar.

Forward, the sporty helm console features a Raytheon navigation package with a plotter, GPS, VHF radio, depth sounder and radar.

## Interior

Electric bilge pump Air conditioning (2 marine units w/ digital controls) Heating Hot water Sharp microwave oven Marine Head - Master & Guest Norcold refrigerator Battery charger Uline icemaker Princess 2 burner electric stove Cherry wood cabinets Sink L-shaped settee/dinette Stereo & CD player

## Electronics

Lawrence depthsounder Navigation center Raytheon 601XX plotter Raytheon Raypilot650 autopilot Compass Raytheon VHF radio Raytheon R41XX radar Ritchie compass TVs (JVC & Zenith) Raytheon NAV398 GPS CD players (2) Stereos (2) Cabin & Cockpit speakers

## Electrical System - DC

Kohler 9 kw generator, 653 hrs. Batteries - (2) 8D wet cell & (1) group 31 wet cell Charles converter Circuits have overload protection Thermoplastic wiring Labeled breakers

## Electrical System - AC

Nominal voltage: 120/240vac, 60 hz Shore power: 120/240vac 50 amp hard-wired through a Cable Master unit Thermoplastic wiring Overload protection for circuits

Deck Cockpit cushions Swimming ladder Fresh water shower Cockpit table Air conditioning (2 marine units w/ digital controls) Eisenglass cockpit enclosure Stereo & CD player - See more at:



---

<http://www.caboats.com/used-boats/8977.htm#sthash.2lcBLshf.dpuf>

## Exclusions

---

Owner's personal belongings.

## Disclaimer

---

The Company offers the details of this vessel or yacht in good faith but cannot guarantee or warrant the accuracy of this information nor warrant the condition of the vessel. A buyer should instruct his representatives, agents, or his surveyors, to investigate such details as the buyer desires validated. This vessel or yacht is offered subject to prior sale, price change, or withdrawal without notice.

# PHOTOS

**Aft**



**Power sliding sunroof**



**Aft cockpit & seating**



**Helm station**



**Cockpit seating**



**Aft cockpit and table**



**Stairway**



**Salon**



**Lounge**



**Galley**



**Master stateroom**



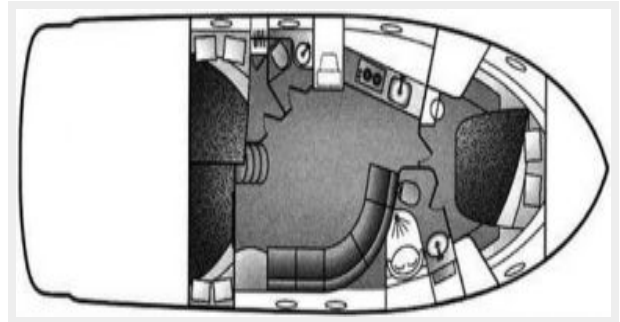
**Vip guest**



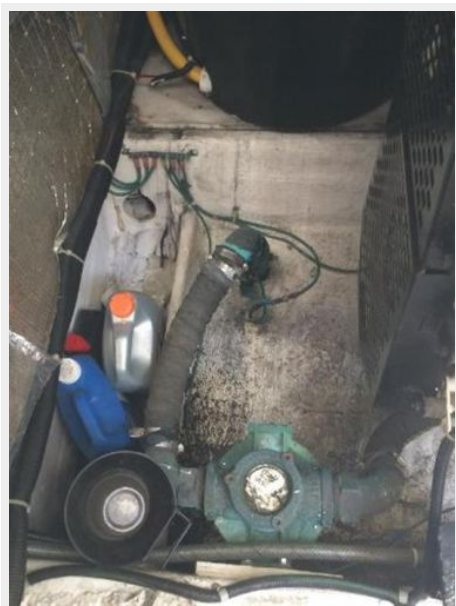
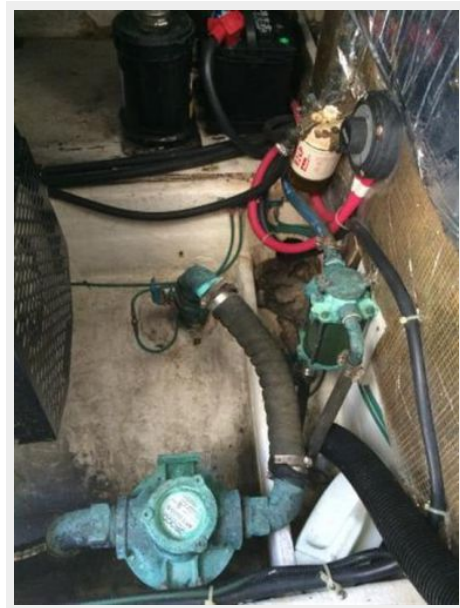
### Bunk

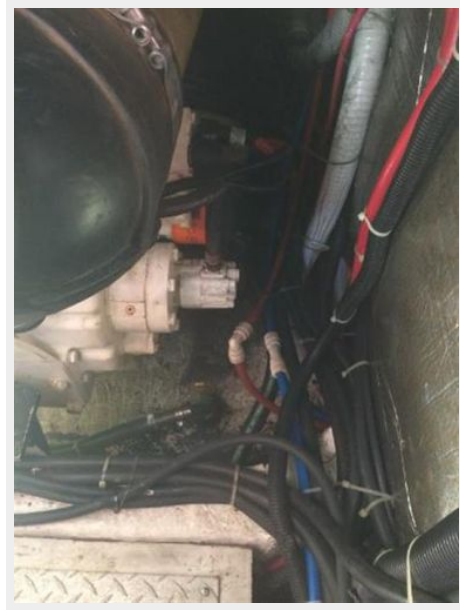


### Layout







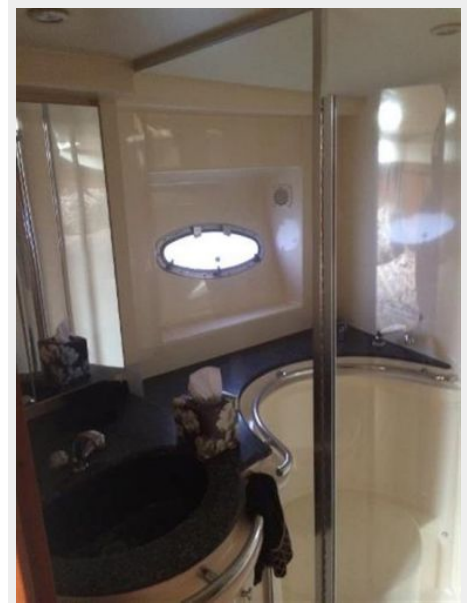
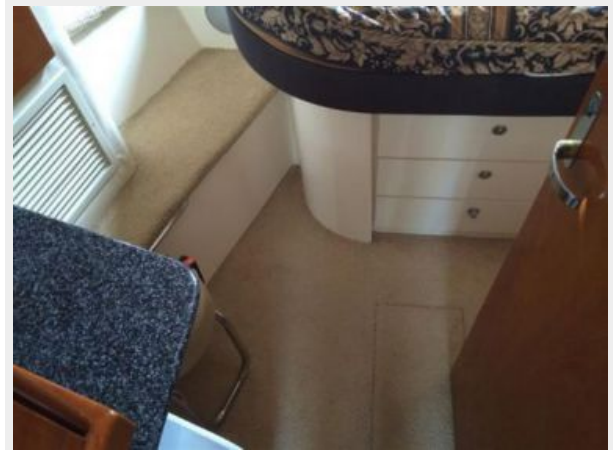


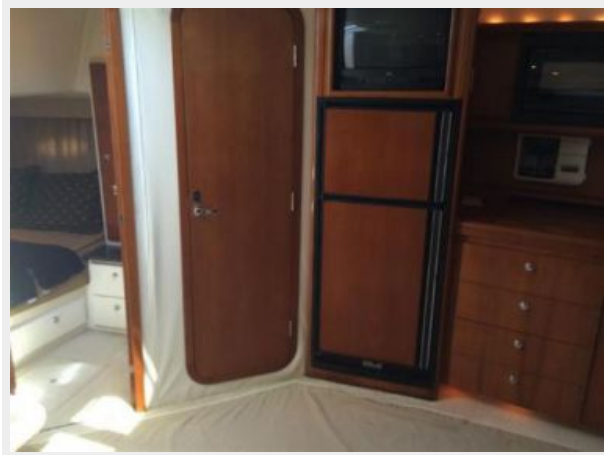


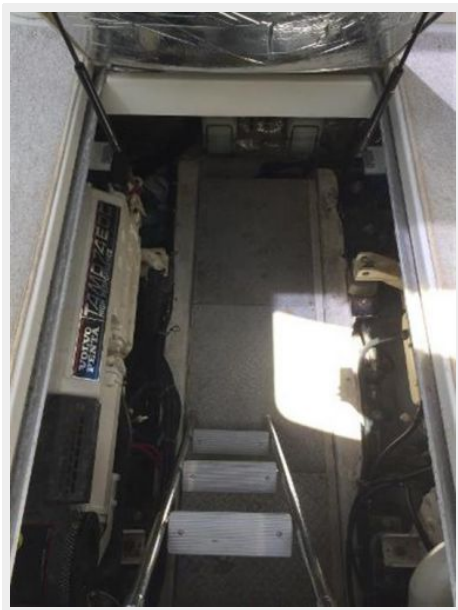


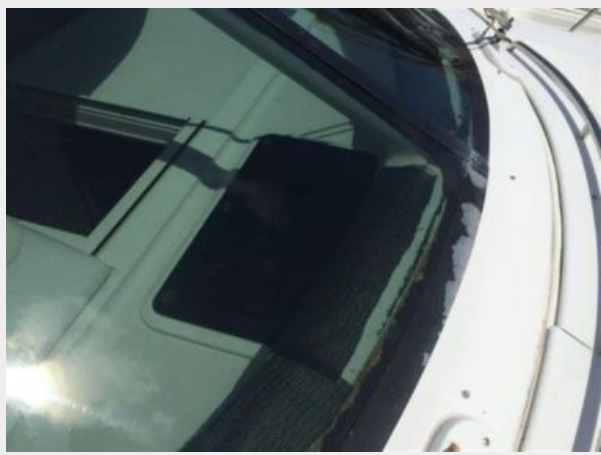


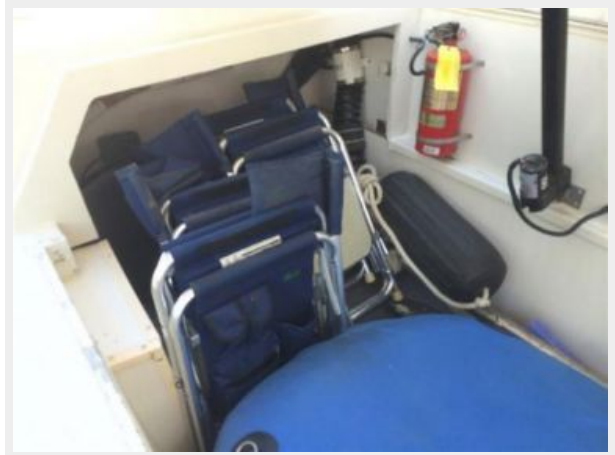






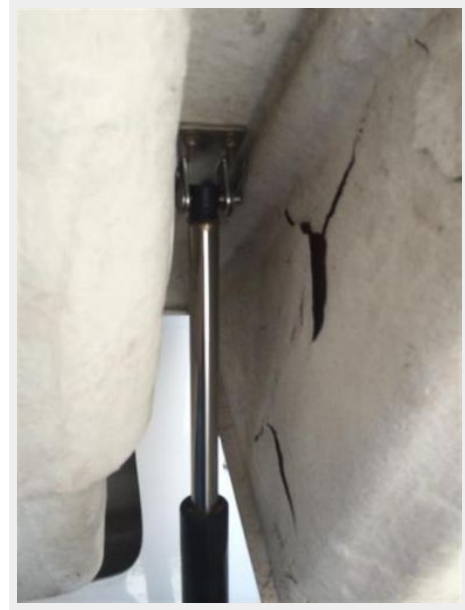












# CONTACTS

---

Andrey Shestakov, leading yacht broker of the sales department of Shestakov Yacht Sales Inc. Shestakov Yacht Sales Inc., the official representative of the Miami/Fort Lauderdale FL headquarters.

## Contact details

---

Email: [andrey@shestakovyachtsales.com](mailto:andrey@shestakovyachtsales.com)

Web: [shestakovyachtsales.com/en/](http://shestakovyachtsales.com/en/)

## Telephones

---

USA: +1(954)274-4435

## Office hours

---

Monday – Saturday: **9:00 - 21:00** EDT

Sunday: **closed**

## Address

---



Harbour Towne Marina, 850 NE 3rd St,  
STE 213, Dania, FL 33004