

LALOUISE (FULLY STABILISED) — FALCON



Builder: FALCON

Year Built: 2008

Model: Motor Yacht

Price: PRICE ON APPLICATION

Location: France

LOA: 86' 0" (26.22m)

Beam: 20' 5" (6.22m)

Min Draft: 7' 3" (2.20m)

Max Draft: 8' 11" (2.71m)

Cruise Speed: 22 Kts. (25 MPH)

Max Speed: 28 Kts. (32 MPH)

Our experienced yacht broker, Andrey Shestakov, will help you choose and buy a yacht that best suits your needs LaLouise (Fully Stabilised) — FALCON from our catalogue. Presently, at Shestakov Yacht Sales Inc., we have a wide variety of yachts available on our sale's list. We also work in close contact with all the big yacht manufacturers from all over the world.

If you would like to buy a yacht LaLouise (Fully Stabilised) — FALCON or would like help answering any questions concerning purchasing, selling or chartering a yacht, please call +1(954)274-4435

TABLE OF CONTENTS

TABLE OF CONTENTS	2
SPECIFICATIONS	4
Overview	4
Basic Information	4
Dimensions	4
Speed, Capacities and Weight	4
Accommodations	5
Hull and Deck Information	5
Engine Information	5
DETAILED INFORMATION	6
Full Description	6
Remarks	16
Exclusions	17
Disclaimer	17
PHOTOS	18
Profile underway	18
Fwd View	18
Fwd main deck seating area	18
Sundeck dining	18
Sundeck Grey cushion cover option	18
Sundeck control	18
Owners sundeck chair	19
Sundeck aft sunbathing area	19
Main Deck aft dining	19
Main salon dining	19
Main salon seating area	19
Master Cabin	19
Master desk vanity area	20

Master sofa	20
Master shower	20
Master basin	20
VIP cabin	20
Twin cabin	20
Tender	21
Toys	21
1st Gyro stabiliser	21
2nd Gyro Stabiliser	21
CONTACTS	22
Contact details	22
Telephones	22
Office hours	22
Address	22

SPECIFICATIONS

Overview

The owner has consistently upgraded the yacht since purchase in all areas. 2 Seakeeper 8000 model gyro stabilisers added to fantastic effect. She is in near perfect condition and fully serviced throughout her history with this owner. A must see for any buyer looking at this size of yacht.

Basic Information

Category: Motor Yacht

Model Year: 2008

Year Built: 2008

Refit Year: 2012

Refit Type: Stabilised

Country: France

Vessel Top: Radar Arch and Bimini

Fly Bridge: Yes

Cockpit: Yes

Dimensions

LOA: 86' 0" (26.22m)

LWL: 77' 6" (23.62m)

Beam: 20' 5" (6.22m)

Min Draft: 7' 3" (2.20m)

Max Draft: 8' 11" (2.71m)

Speed, Capacities and Weight

Cruise Speed: 22 Kts. (25 MPH)

Cruise Speed Range: 400

Max Speed: 28 Kts. (32 MPH)

Gross Tonnage: 138 Pounds

Water Capacity: 449.0924884 Gallons

Fuel Capacity: 2298.2968524 Gallons

Fuel Consumption: 145.2946286 Gallons

Accommodations

Total Cabins: 4

Total Berths: 8

Sleeps: 8

Total Heads: 5

Crew Cabin: 2

Crew Berths: 4

Crew Sleeps: 4

Crew Heads: 2

Hull and Deck Information

Hull Material: GRP

Deck Material: Teak

Hull Configuration: Planing

Hull Color: White

Engine Information

Engines: 2

Manufacturer: MTU

Model: 12v2000 M93

Fuel Type: Diesel

DETAILED INFORMATION

Full Description

Lalouise

GENERAL

LOA :	26,21 m
Beam :	6,35 m
Draft :	2 m
Hull material :	fiberglass
Cruising speed :	22 kts
Max speed :	28,5 kts
Range :	400 NM
Year :	2008
Builder :	Falcon
Type :	motor yacht
Engines :	2x MTU 12v2000 M93 (790 hrs)
Generators :	2x ONAN 22,5 kw MDKBT (3600 hrs)
Gyros :	2x seakeeper gyros mod 8000 *2013
Fuel capacity :	8700 L / 2300 us gal
Fresh water capacity :	1700 L / 450 us gal
Black tank :	1280 L
grey tank	300 L and 100 L

wavebrite syst tank :	300 L *2012
Staterooms :	4
Sleeps :	8
Heads :	5
Crew berths :	4 (2x2) with 2 heads

SALON/DINING

- Wood ceiling, walls and furniture
- 1 Fabric angle sofa (6 seats)
- 1 Fabric sofa (2 seats)
- 1 Wood Coffee table
- LCD TV Panasonic 42" 3D
- 3D DVD Player Multi region SONY
- SKY HD Box
- BOSE CD/DVD Player
- Bose Entertainment system + aft deck
- Central Remote Logitech
- 1 Apple TV + wifi access pt *2012
- Wine cellar 18 bottles
- Dining table w/ extension 8 guests
- 8 Chairs *2014
- 18 Cupboards
- Dimmer alogene
- A/C Unit
- Carpet, curtains

GALLEY

- Microwave BOSH
- Extractor Hood AEG 250W
- Oven BOSH
- 2 Fridge/Freezer LIEBHERR 231L/89L *2013
- Freezer PROLINE 100L *2014
- Vacuum Cleaner ELECTROLUX *2013
- Juice Maker MAGIMIX
- Mixer CUISINART Hot/Cold
- Toaster CUISINART
- Coffee Machine NESPRESSO
- Capuccino Machine NESPRESSO
- Kettle CUISINART
- Dish Washer MIELE 2200W *2013
- Elec Hob w/4 plates BOSH 6600W
- Retractable working top
- Power 220V DC
- Hot/Cold Water system
- Stainless steel double sink
- Ceiling lights w/spots LED *2012

WHEELHOUSE

- 1 Furuno SSB FS
- 1 Furuno Radar 64 NM
- 1 Furuno plotter GD 1920 navnet
- 1 Furuno VHF/DSC FM 8800
- 2 Furuno GPS(GP)32(B) *2012 for one
- 2 Repetiteur Furuno NMEA RD30
- 1 Repetiteur GPS GP 320
- 1 Navi control autopilot AP 30003 gold
- 1 Simrad portable GMDSS VHF *2012
- 3 Portable ICON VHF
- 1 Seatel 24-019 costal series DBS/DTH syst
- Rudder angle indicator
- Gyros control panel
- Gauges black and grey tank
- Gauges Water and fuel
- Leather angle sofa 5 seats
- Leather pilot seat
- Table w/extension
- Ceiling lights + 1 red light LED *2012
- Boat docs and infos
- Papers Charts
- Ice maker
- Multi directional cam ER and remote

- 5 fire detection system/panel 18pt ELTEK control
- 1 Central Telephonic Panasonic KXTDA30
- 1 Satellite phone Thuraya + base
- Bilges alarm panel
- Navigation control panel
- General electric panel
- Search light control panel
- File for flags
- Electric windscreen
- Barometer, hygrometer
- Ritchie magnetic compass
- Trimming flap control
- Static Camera Aft deck *2012
- 2 screen for camera *2012
- PC Computer
- 1 wifi access point *2012
- Radio/CD player w/speakers
- A/C Unit
- Varnished teak floor
- Radio batt emergency
- Marine router 3G/4G // Hot spot *2012
- Day head with sink and toilet, LED *2012

MASTER STATEROOM

- 1 double bed 180x190
- 2 mirrors above bed
- 2 bedside tables
- 2 bedside lights
- 13 cupboards
- 2 portholes
- 1 two seats couch
- 1 vanity with mirror
- 1 dressing
- CD Tuner player SONY
- Blueraay DVD Player
- 1 Sky HD box
- AC Unit
- Safe
- Telephone
- Ceiling lights LED *2012
- Storage facility under bed and drawers

- 1 LCD TV SAMSUNG 26"
- 1 apple TV + wifi access pt *2013
- Carpet and Curtains

MASTER BATH

- Wash black marble basin with a mirror above
- 1 electric toilet
- 1 bidet
- 1 porthole
- 6 cupboards
- 1 shower 90x115cm
- Varnished Teak floor
- LED *2012

VIP STATEROOM

- 1 double bed 170x180
- 2 mirrors above bed
- 2 bedside tables
- 2 bedside lights
- 7 cupboards
- 2 portholes
- 1 vanity with mirror
- CD Tuner player SONY
- 1 Sky HD box
- Blueraay DVD Player
- AC Unit
- Safe
- Telephone
- Ceiling lights LED *2012

- 1 LCD TV SAMSUNG 22"
- 1 apple TV + wifi access py *2012
- Storage facility under bed and drawers
- Carpet and Curtains

VIP BATH

- Wash black marble basin with a mirror above
- 1 electric toilet
- 1 bidet
- 1 porthole
- 3 cupboards
- 1 shower 70x110cm
- Varnished Teak floor
- LED *2012

STARBOARD GUEST CABIN

- 2 beds 80x180
- 2 mirrors above bed
- 1 bedside table
- 2 bedside lights
- 3 cupboards
- 1 porthole
- CD Tuner player SONY
- AC Unit
- Telephone
- Ceiling lights LED *2012
- Storage facility under bed and drawers
- Carpet and Curtains

STARBOARD GUEST BATH

- Wash white marble basin with a mirror above
- 1 electric toilet
- 1 bidet
- 1 porthole
- 3 cupboards
- 1 shower 70x110cm
- Varnished Teak floor
- LED *2012

PORT GUEST CABIN

- 2 beds 80x180
- 2 mirrors above bed
- 1 bedside table
- 2 bedside lights
- 3 cupboards
- 1 porthole
- CD Tuner player SONY
- AC Unit
- Telephone
- Ceiling lights LED *2012
- Storage facility under bed and drawers
- Carpet and Curtains

PORT GUEST BATH

- Wash white marble basin with a mirror above
- 1 electric toilet

- 1 bidet
- 1 porthole
- 3 cupboards
- 1 shower 70x110cm
- Varnished Teak floor
- LED *2012

FLYBRIDGE

- Electro hydraulic crane w/ telescopic jib for tender
- Jet Boat Williams T 445 6pers.and cover (275 Hrs) *2013
- Spray dodger *2014
- Water ski pile *2013
- Sofa seating for 6 with cushions & backrest
- 2 chairs *2014
- Fiberglass table up to 8/10 pers
- Lounger 4 pers with pillows
- Barbecue SIEMENS 2500W
- Multi purpose locker w/ sink
- Electronic controls for main engines and reversing gears
- Ritchie magnetic compass
- Rudder angle indicators
- Flap controls and indicator
- Plotter GD 1920 navnet
- Automatic pilot repeater
- Intercom
- 2 seats sofa
- 1 pilot seat
- Roll bar for radar, antennas, lights
- Covers for dashboard and seats
- Outside light LED *2012
- Stereo w/ 2 speakers
- Small fridge

DECK EQUIPMENT

- 1 extendable table 4 to 8/10 pers
- 4 chairs *2014
- 1 bell
- 2 projects 1500 LOFRANS windlass forward
- 2 x 100m galvanised chain (12 diameter)
- 2 anchors (pool) 100 kgs
- 2 Capstan aft deck
- 6 lockers
- Forward seating area and sunbathing area
- Swim platform with buildin foldout swim lader
- Outside light LED *2012

ENGINE ROOM AND LAZARETTE

- 2 MTU 12V 2000 M93 (790 hrs)
- 2 chargeur Main Engine Batt ZIVAN
- 2 ONAN Generators 22,5 KW MDKBT
- 1 Chargeur Mastervolt generator
- 2 Seakeeper Model 8000 gyros
- Wave brite System for grey water + 300L tank
- (OMI-MARPOL Norm D4)
- 2 ZF 3050V gear box
- A/C Syst reversible FRIGIT 150 BTU (2 chill)
- 2 charger battery service
- (Mastervolt Mass 24/100C & Quick 24V/100A)
- Compressor air 24L
- Divers pumps Gianneschi
- Bowthruster BSC
- Flaps BSC
- CO2 System fire
- Washing Machine BOSCH
- Dryer BOSCH

- Water Maker Tecnicomar MD/SL 1000 150L/Hr
- Electric panel control
- Batt service 12x2V
- Tools

TOYS

- 2 paddle board
- 1 Jobe airstream
- 1 Adult water ski
- 1 inflatable aqua Flyer mattress
- 1 Kid water ski
- 1 inflatable Kayak 2 pers
- 1 Wake board
- 1 exercice bike
- 1 donut
- 1 set diving equipment and bottle

SAFETY AND FIRE PROTECTION

- 1 AED
- 1 First Aid Kit
- 1 CO2 release station for ER
- 2 liferaft 8 pers
- 2 5kgs CO2 ext
- 16 life jackets
- 10 2kgs powder ext
- 3 lifebuoy
- 1 EPIRB
- 1 stretcher
- 2 grab bag

STARBOARD CREW CAB AND BATH

- 2 bunk beds w/mattress

- Clothes cabinet
- Porthole
- Stereo/cd player w/speakers
- Telephone
- Curtains
- Ceilling light LED *2012
- Wash basin w/mirror
- Electric WC
- Electric fan
- LED *2012

PORT CREW CAB AND BATH

- 2 bunk beds w/mattress
- Clothes cabinet
- Porthole
- Stereo/cd player w/speakers
- Telephone
- Curtains
- Ceilling light LED *2012
- Wash basin w/mirror
- Electric WC
- Electric fan
- LED *2012

Remarks

Since purchase in 2012 the owners of LaLouise have continuously maintained the yacht to highest standard possible as well as completing several upgrades. This includes but not limited to a new gel coat, AV equipment, owners high chair on sundeck and 2 Seakeeper Gyros 8000 series, giving her an excellent stability both under way and at sea. She is a must see for any buyer looking to purchase a yacht that has been greatly maintained and seriously improved on since new. BEST FALCON 86' ON THE MARKET TODAY.

Exclusions

Owner's personal belongings.

Disclaimer

The Company offers the details of this vessel or yacht in good faith but cannot guarantee or warrant the accuracy of this information nor warrant the condition of the vessel. A buyer should instruct his representatives, agents, or his surveyors, to investigate such details as the buyer desires validated. This vessel or yacht is offered subject to prior sale, price change, or withdrawal without notice.

PHOTOS

Profile underway



Fwd View



Fwd main deck seating area



Sundeck dining



Sundeck control



Sundeck Grey cushion cover option



Sundeck aft sunbathing area



Owners sundeck chair



Main Deck aft dining



Main salon dining



Main salon seating area



Master Cabin



Master desk vanity area



Master sofa



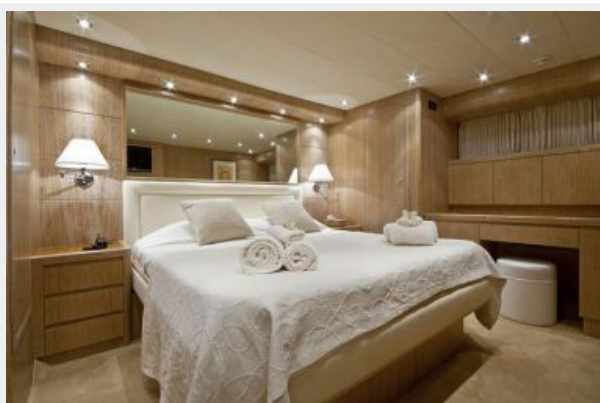
Master shower



Master basin



VIP cabin



Twin cabin



Tender



Toys



1st Gyro stabiliser



2nd Gyro Stabiliser



CONTACTS

Andrey Shestakov, leading yacht broker of the sales department of Shestakov Yacht Sales Inc. Shestakov Yacht Sales Inc., the official representative of the Miami/Fort Lauderdale FL headquarters.

Contact details

Email: andrey@shestakovyachtsales.com

Web: shestakovyachtsales.com/en/

Telephones

USA: +1(954)274-4435

Office hours

Monday – Saturday: **9:00 - 21:00** EDT

Sunday: **closed**

Address



Harbour Towne Marina, 850 NE 3rd St,
STE 213, Dania, FL 33004