

# LALOUISE (FULLY STABILISED) — FALCON



**Судостроитель:** FALCON

**Год постройки:** 2008

**Модель:** Моторная яхта

**Цена:** ЦЕНА ЯХТЫ ПО ЗАПРОСУ

**Местонахождение:** France

**Длина общая:** 86' 0" (26.22m)

**Ширина:** 20' 5" (6.22m)

**Мин. осадка:** 7' 3" (2.20m)

**Макс. осадка:** 8' 11" (2.71m)

**Крейс. скорость:** 22 Kts. (25 MPH)

**Макс. скорость:** 28 Kts. (32 MPH)

Купить LaLouise (Fully Stabilised) — FALCON а также выбрать подходящую вам яхту из нашего каталога яхт вам поможет опытный яхтенный брокер Андрей Шестаков. На сегодняшний день компания Shestakov Yacht Sales Inc. имеет большое количество яхт в собственном списке продаж, а также тесно сотрудничает со всеми крупными яхтенными производителями по всему миру.

Для того чтобы купить яхту LaLouise (Fully Stabilised) — FALCON а также проконсультироваться по любому вопросу связанному с покупкой, продажей, чартером яхт позвоните по телефону **+7(918)465-66-44**.

# ОГЛАВЛЕНИЕ

ОГЛАВЛЕНИЕ	2
ХАРАКТЕРИСТИКИ	4
Обзор	4
Основная информация	4
Размеры	4
Скорость, вместимость и масса	4
Размещение	5
Корпус и палуба	5
Информация о двигателе	5
ПОДРОБНОЕ ОПИСАНИЕ	6
Full Description	6
Remarks	16
Исключения	17
Отказ от ответственности	17
ФОТОГРАФИИ	18
Profile underway	18
Fwd View	18
Fwd main deck seating area	18
Sundeck dining	18
Sundeck Grey cushion cover option	18
Sundeck control	18
Owners sundeck chair	19
Sundeck aft sunbathing area	19
Main Deck aft dining	19
Main salon dining	19
Main salon seating area	19
Master Cabin	19
Master desk vanity area	20

---

Master sofa	20
Master shower	20
Master basin	20
VIP cabin	20
Twin cabin	20
Tender	21
Toys	21
1st Gyro stabiliser	21
2nd Gyro Stabiliser	21
<b>КОНТАКТЫ</b>	<b>22</b>
Контактная информация	22
Телефоны	22
Время работы	22
Адрес	22

# ХАРАКТЕРИСТИКИ

## Обзор

The owner has consistently upgraded the yacht since purchase in all areas. 2 Seakeeper 8000 model gyro stabilisers added to fantastic effect. She is in near perfect condition and fully serviced throughout her history with this owner. A must see for any buyer looking at this size of yacht.

## Основная информация

<b>Тип судна:</b> Моторная яхта	<b>Модельный год:</b> 2008
<b>Год постройки:</b> 2008	<b>Год обновления:</b> 2012
<b>Вид обновления:</b> Stabilised	<b>Страна:</b> France
<b>Верх:</b> Radar Arch and Bimini	<b>Открытая палуба мостика:</b> Да
<b>Кубрик:</b> Да	

## Размеры

<b>Длина общая:</b> 86' 0" (26.22m)	<b>Длина по ватерлинии:</b> 77' 6" (23.62m)
<b>Ширина:</b> 20' 5" (6.22m)	<b>Мин. осадка:</b> 7' 3" (2.20m)
<b>Макс. осадка:</b> 8' 11" (2.71m)	

## Скорость, вместимость и масса

<b>Крейс. скорость:</b> 22 Kts. (25 MPH)	<b>Дальность на крейсерской скорости:</b> 400
<b>Макс. скорость:</b> 28 Kts. (32 MPH)	<b>Чистый вес:</b> 138 Pounds
<b>Вместимость воды:</b> 449.0924884 Gallons	<b>Объем топливного бака:</b> 2298.2968524 Gallons
<b>Расход топлива:</b> 145.2946286 Gallons	

## Размещение

---

Всего кают: 4

Всего коек: 8

Спальные места: 8

Всего ком. состава: 5

Каюты экипажа: 2

Койки экипажа: 4

Спальных мест экипажа: 4

Комм. состав экипажа: 2

## Корпус и палуба

---

Материал корпуса: GRP

Материал палубы: Teak

Комплектация корпуса: Planing

Цвет корпуса: White

## Информация о двигателе

---

Двигатели: 2

Производитель: MTU

Модель: 12v2000 M93

Тип топлива: Diesel

# ПОДРОБНОЕ ОПИСАНИЕ

## Full Description

Lalouise

### GENERAL

<b>LOA :</b>	26,21 m
<b>Beam :</b>	6,35 m
<b>Draft :</b>	2 m
<b>Hull material :</b>	fiberglass
<b>Cruising speed :</b>	22 kts
<b>Max speed :</b>	28,5 kts
<b>Range :</b>	400 NM
<b>Year :</b>	2008
<b>Builder :</b>	Falcon
<b>Type :</b>	motor yacht
<b>Engines :</b>	2x MTU 12v2000 M93 (790 hrs)
<b>Generators :</b>	2x ONAN 22,5 kw MDKBT (3600 hrs)
<b>Gyros :</b>	2x seakeeper gyros mod 8000 *2013
<b>Fuel capacity :</b>	8700 L / 2300 us gal
<b>Fresh water capacity :</b>	1700 L / 450 us gal
<b>Black tank :</b>	1280 L
<b>grey tank</b>	300 L and 100 L

---

<b>wavebrite syst tank :</b>	300 L *2012
<b>Staterooms :</b>	4
<b>Sleeps :</b>	8
<b>Heads :</b>	5
<b>Crew berths :</b>	4 (2x2) with 2 heads

## SALON/DINING

- Wood ceiling, walls and furniture
- 1 Fabric angle sofa (6 seats)
- 1 Fabric sofa (2 seats)
- 1 Wood Coffee table
- LCD TV Panasonic 42" 3D
- 3D DVD Player Multi region SONY
- SKY HD Box
- BOSE CD/DVD Player
- Bose Entertainment system + aft deck
- Central Remote Logitech
- 1 Apple TV + wifi access pt \*2012
- Wine cellar 18 bottles
- Dining table w/ extension 8 guests
- 8 Chairs \*2014
- 18 Cupboards
- Dimmer alogene
- A/C Unit
- Carpet, curtains

## GALLEY

- Microwave BOSH
- Extractor Hood AEG 250W
- Oven BOSH
- 2 Fridge/Freezer LIEBHERR 231L/89L \*2013
- Freezer PROLINE 100L \*2014
- Vacuum Cleaner ELECTROLUX \*2013
- Juice Maker MAGIMIX
- Mixer CUISINART Hot/Cold
- Toaster CUISINART
- Coffee Machine NESPRESSO
- Capuccino Machine NESPRESSO
- Kettle CUISINART
- Dish Washer MIELE 2200W \*2013
- Elec Hob w/4 plates BOSH 6600W
- Retractable working top
- Power 220V DC
- Hot/Cold Water system
- Stainless steel double sink
- Ceiling lights w/spots LED \*2012

## WHEELHOUSE

- 1 Furuno SSB FS
- 1 Furuno Radar 64 NM
- 1 Furuno plotter GD 1920 navnet
- 1 Furuno VHF/DSC FM 8800
- 2 Furuno GPS(GP)32(B) \*2012 for one
- 2 Repetiteur Furuno NMEA RD30
- 1 Repetiteur GPS GP 320
- 1 Navi control autopilot AP 30003 gold
- 1 Simrad portable GMDSS VHF \*2012
- 3 Portable ICON VHF
- 1 Seatel 24-019 costal series DBS/DTH syst
- Rudder angle indicator
- Gyros control panel
- Gauges black and grey tank
- Gauges Water and fuel
- Leather angle sofa 5 seats
- Leather pilot seat
- Table w/extension
- Ceiling lights + 1 red light LED \*2012
- Boat docs and infos
- Papers Charts
- Ice maker
- Multi directional cam ER and remote



- 5 fire detection system/panel 18pt ELTEK control
- 1 Central Telephonic Panasonic KXTDA30 · Static Camera Aft deck \*2012
- 1 Satellite phone Thuraya + base · 2 screen for camera \*2012
- Bilges alarm panel · PC Computer
- Navigation control panel · 1 wifi access point \*2012
- General electric panel · Radio/CD player w/speakers
- Search light control panel · A/C Unit
- File for flags · Varnished teak floor
- Electric windscreen · Radio batt emergency
- Barometer, hygrometer · Marine router 3G/4G // Hot spot \*2012
- Ritchie magnetic compass · Day head with sink and toilet, LED \*2012
- Trimming flap control

## MASTER STATEROOM

- 1 double bed 180x190
- 2 mirrors above bed
- 2 bedside tables
- 2 bedside lights
- 13 cupboards
- 2 portholes
- 1 two seats couch
- 1 vanity with mirror
- 1 dressing
- CD Tuner player SONY
- Blueraay DVD Player
- 1 Sky HD box
- AC Unit
- Safe
- Telephone
- Ceiling lights LED \*2012
- Storage facility under bed and drawers

- 1 LCD TV SAMSUNG 26"
- 1 apple TV + wifi access pt \*2013
- Carpet and Curtains

## MASTER BATH

- Wash black marble basin with a mirror above
- 1 electric toilet
- 1 bidet
- 1 porthole
- 6 cupboards
- 1 shower 90x115cm
- Varnished Teak floor
- LED \*2012

## VIP STATEROOM

- 1 double bed 170x180
- 2 mirrors above bed
- 2 bedside tables
- 2 bedside lights
- 7 cupboards
- 2 portholes
- 1 vanity with mirror
- CD Tuner player SONY
- 1 Sky HD box
- Blu-ray DVD Player
- AC Unit
- Safe
- Telephone
- Ceiling lights LED \*2012

- 1 LCD TV SAMSUNG 22"
- 1 apple TV + wifi access py \*2012
- Storage facility under bed and drawers
- Carpet and Curtains

## VIP BATH

- Wash black marble basin with a mirror above
- 1 electric toilet
- 1 bidet
- 1 porthole
- 3 cupboards
- 1 shower 70x110cm
- Varnished Teak floor
- LED \*2012

## STARBOARD GUEST CABIN

- 2 beds 80x180
- 2 mirrors above bed
- 1 bedside table
- 2 bedside lights
- 3 cupboards
- 1 porthole
- CD Tuner player SONY
- AC Unit
- Telephone
- Ceiling lights LED \*2012
- Storage facility under bed and drawers
- Carpet and Curtains

## STARBOARD GUEST BATH

- Wash white marble basin with a mirror above
- 1 electric toilet
- 1 bidet
- 1 porthole
- 3 cupboards
- 1 shower 70x110cm
- Varnished Teak floor
- LED \*2012

## PORT GUEST CABIN

- 2 beds 80x180
- 2 mirrors above bed
- 1 bedside table
- 2 bedside lights
- 3 cupboards
- 1 porthole
- CD Tuner player SONY
- AC Unit
- Telephone
- Ceiling lights LED \*2012
- Storage facility under bed and drawers
- Carpet and Curtains

## PORT GUEST BATH

- Wash white marble basin with a mirror above
- 1 electric toilet

- 1 bidet
- 1 porthole
- 3 cupboards
- 1 shower 70x110cm
- Varnished Teak floor
- LED \*2012

## FLYBRIDGE

- Electro hydraulic crane w/ telescopic jib for tender
- Jet Boat Williams T 445 6pers.and cover (275 Hrs) \*2013
- Spray dodger \*2014
- Water ski pile \*2013
- Sofa seating for 6 with cushions & backrest
- 2 chairs \*2014
- Fiberglass table up to 8/10 pers
- Lounger 4 pers with pillows
- Barbecue SIEMENS 2500W
- Multi purpose locker w/ sink
- Electronic controls for main engines and reversing gears
- Ritchie magnetic compass
- Rudder angle indicators
- Flap controls and indicator
- Plotter GD 1920 navnet
- Automatic pilot repeater
- Intercom
- 2 seats sofa
- 1 pilot seat
- Roll bar for radar, antennas, lights
- Covers for dashboard and seats
- Outside light LED \*2012
- Stereo w/ 2 speakers
- Small fridge

## DECK EQUIPMENT

- 1 extendable table 4 to 8/10 pers
- 4 chairs \*2014
- 1 bell
- 2 projects 1500 LOFRANS windlass forward
- 2 x 100m galvanised chain (12 diameter)
- 2 anchors (pool) 100 kgs
- 2 Capstan aft deck
- 6 lockers
- Forward seating area and sunbathing area
- Swim platform with buildin foldout swim ladder
- Outside light LED \*2012

## ENGINE ROOM AND LAZARETTE

- 2 MTU 12V 2000 M93 (790 hrs)
- 2 chargeur Main Engine Batt ZIVAN
- 2 ONAN Generators 22,5 KW MDKBT
- 1 Chargeur Mastervolt generator
- 2 Seakeeper Model 8000 gyros
- Wave brite System for grey water + 300L tank
- (OMI-MARPOL Norm D4)
- 2 ZF 3050V gear box
- A/C Syst reversible FRIGIT 150 BTU (2 chill)
- 2 charger battery service
- (Mastervolt Mass 24/100C & Quick 24V/100A)
- Compressor air 24L
- Divers pumps Gianneschi
- Bowthruster BSC
- Flaps BSC
- CO2 System fire
- Washing Machine BOSCH
- Dryer BOSCH

- Water Maker Tecnicomar MD/SL 1000 150L/Hr
- Electric panel control
- Batt service 12x2V
- Tools

## TOYS

- 2 paddle board
- 1 Jobe airstream
- 1 Adult water ski
- 1 inflatable aqua Flyer mattress
- 1 Kid water ski
- 1 inflatable Kayak 2 pers
- 1 Wake board
- 1 exercice bike
- 1 donut
- 1 set diving equipment and bottle

## SAFETY AND FIRE PROTECTION

- 1 AED
- 1 First Aid Kit
- 1 CO2 release station for ER
- 2 liferaft 8 pers
- 2 5kgs CO2 ext
- 16 life jackets
- 10 2kgs powder ext
- 3 lifebuoy
- 1 EPIRB
- 1 stretcher
- 2 grab bag

## STARBOARD CREW CAB AND BATH

- 2 bunk beds w/mattress

- Clothes cabinet
- Porthole
- Stereo/cd player w/speakers
- Telephone
- Curtains
- Ceilling light LED \*2012
- Wash basin w/mirror
- Electric WC
- Electric fan
- LED \*2012

## PORT CREW CAB AND BATH

- 2 bunk beds w/mattress
- Clothes cabinet
- Porthole
- Stereo/cd player w/speakers
- Telephone
- Curtains
- Ceilling light LED \*2012
- Wash basin w/mirror
- Electric WC
- Electric fan
- LED \*2012

## Remarks

Since purchase in 2012 the owners of LaLouise have continuously maintained the yacht to highest standard possible as well as completing several upgrades. This includes but not limited to a new gel coat, AV equipment, owners high chair on sundeck and 2 Seakeeper Gyros 8000 series, giving her an excellent stability both under way and at sea. She is a must see for any buyer looking to purchase a yacht that has been greatly maintained and seriously improved on since new. BEST FALCON 86' ON THE MARKET TODAY.



---

## Исключения

---

При продаже яхты исключаются личные вещи владельца.

---

## Отказ от ответственности

---

Компания предоставляет описание судна или яхты добросовестно, но не может гарантировать точность этой информации, а также не ручается за техническое состояние. Покупатель должен проинструктировать своих агентов или оценщиков исследовать представленную информацию более подробно, по собственному желанию. Продажа судна или яхты, изменение цены или снятие с продажи будет происходить без предварительного уведомления.

# ФОТОГРАФИИ

**Profile underway**



**Fwd View**



**Fwd main deck seating area**



**Sundeck dining**



**Sundeck control**



**Sundeck Grey cushion cover option**



**Sundeck aft sunbathing area**



**Owners sundeck chair**



**Main Deck aft dining**



**Main salon dining**



**Main salon seating area**



**Master Cabin**





**Master desk vanity area**



**Master sofa**



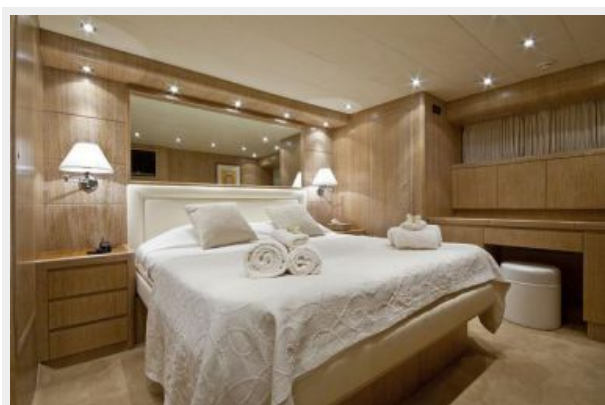
**Master shower**



**Master basin**



**VIP cabin**



**Twin cabin**



**Tender**



**Toys**



**1st Gyro stabiliser**



**2nd Gyro Stabiliser**



# КОНТАКТЫ

---

Андрей Шестаков (Andrey Shestakov) – ведущий яхтенный брокер отдела продаж яхт и судов компании Shestakov Yacht Sales Inc. Официальный представитель Shestakov Yacht Sales Inc. для русскоговорящих клиентов в центральном офисе компании в Майами/Форт Лодердейл/Флорида/США.

## Контактная информация

---

Email: **andrey@shestakovyachtsales.com**

Web: [shestakovyachtsales.com](http://shestakovyachtsales.com)

## Телефоны

---

Краснодарский край: **+7(918)465-66-44**

США, Майами, Флорида: **+1(954)274-4435**

## Время работы

---

Понедельник – Суббота: **9:00 - 21:00**  
EDT

Воскресенье: **Закрито**

## Адрес

---



Harbour Towne Marina, 850 NE 3rd St,  
STE 213, Dania, FL 33004