

## BET ON IT — LEOPARD



**Builder:** LEOPARD

**Year Built:** 2000

**Model:** Motor Yacht

**Price:** PRICE ON APPLICATION

**Location:** United States

**LOA:** 78' 0" (23.77m)

**Beam:** 17' 10" (5.44m)

**Min Draft:** 5' 0" (1.52m)

**Cruise Speed:** 25 Kts. (29 MPH)

**Max Speed:** 31 Kts. (36 MPH)

Our experienced yacht broker, Andrey Shestakov, will help you choose and buy a yacht that best suits your needs **BET ON IT — LEOPARD** from our catalogue. Presently, at Shestakov Yacht Sales Inc., we have a wide variety of yachts available on our sale's list. We also work in close contact with all the big yacht manufacturers from all over the world.

If you would like to buy a yacht **BET ON IT — LEOPARD** or would like help answering any questions concerning purchasing, selling or chartering a yacht, please call **+1(954)274-4435**

# TABLE OF CONTENTS

TABLE OF CONTENTS	2
SPECIFICATIONS	4
Overview	4
Basic Information	4
Dimensions	5
Speed, Capacities and Weight	5
Accommodations	5
Hull and Deck Information	5
Engine Information	6
PHOTOS	7
Stern view 2	7
Stern view	7
Bow	7
Sun Bathing	7
Cocktail tables	7
Upper salon	7
Upper salon 2	8
Upper salon couches	8
Helm	8
Galey	8
Lower salon	8
Convertible twin cabin from to salon couch	8
Master	9
Master 2	9
Master ensuite	9
VIP	9
VIP ensuite	10
VIP 2	10

Crew bathroom	10
Crew cabin	10
Nav Electronics	11
Engine room	11
Sailing	11
CONTACTS	12
Contact details	12
Telephones	12
Office hours	12
Address	12

# SPECIFICATIONS

---

## Overview

---

With comfortable accommodation for 7 guests BET ON IT is the ultimate Italian yacht in the sport yacht range. The vessel benefits from a hydraulically operated sun roof in the upper salon and comfortable salon areas on the main deck and lower deck. the decoration is modern with a mix of leather, fabric and wood.

This vessel is a one of a kind highly customised 75' Leopard. There is no other like it in the world. The yacht was stripped in 2008 down to its shell so the whole main deck and interior could be reconfigured. The swim platform was extended to allow for storage of a tender or Jet Ski. Fully painted with Awl-Grip paint and it was thermally insulated from the overhead to the waterline. Overall more than 1.5 million USD spent.

The new layout has the VIP king in the bow with en-suite bathroom, cedar lined lockers and drawers, and a 27" Samsung LCD TV. Moving aft to the Main Salon with an open galley and a seating niche on the port side that can convert to a second guest cabin with either a hidden custom drape or a semi-permanent enclosure w/door. The enclosure is built of the same MAKORE veneer as the rest of the interior and is stored under the master bed. The sofa on the stbd. side of the salon also opens out into a custom double bed if necessary.

**Note:** All of the bathroom walls are insulated for sound to help prevent shower noises from entering the accommodation spaces. All bathrooms are air-conditioned and have music from the central system.

The Crew cabin is accessed from the helm deck or the stern through the engine room. The crew cabin has a full separate bathroom and a cabin for two with over and under berths.

The watertight door to the engine room has a double pane view port. At the stern the garage has been modified with a bathroom w/shower, storage lockers and a watertight door to the swim platform. A truly state of the art job! **Port engine has been overhauled in November and has only 85h since. Starboard engine has been also reconditioned in November.**

## Basic Information

---

**Category:** Motor Yacht

**Sub Category:** Fast

**Model Year:** 2000

**Year Built:** 2000

**Refit Year:** 2008

**Refit Type:** Full refit

**Country:** United States

**Vessel Top:** Electronic Sunroof

## Dimensions

---

**LOA:** 78' 0" (23.77m)**Beam:** 17' 10" (5.44m)**Min Draft:** 5' 0" (1.52m)**MFG Length:** 75' 6" (23.01m)

## Speed, Capacities and Weight

---

**Cruise Speed:** 25 Kts. (29 MPH)**Cruise Speed Range:** 250**Max Speed:** 31 Kts. (36 MPH)**Gross Tonnage:** 45 Pounds**Water Capacity:** 317 Gallons**Fuel Capacity:** 1325 Gallons

## Accommodations

---

**Total Cabins:** 3**Total Berths:** 4**Sleeps:** 7**Total Heads:** 5**Crew Cabin:** 1**Crew Berths:** 2**Crew Sleeps:** 2**Crew Heads:** 1

## Hull and Deck Information

---

**Hull Material:** GRP**Deck Material:** GRP**Hull Configuration:** Modified V-Hull**Hull Color:** White**Hull Designer:** Andrea Bacigalupo**Exterior Designer:** Andrea Bacigalupo

## Engine Information

---

**Engines:** 2

**Manufacturer:** MAN

**Model:** 2842 LE406

**Engine Type:** Inboard

**Fuel Type:** Diesel

# PHOTOS

**Stern view**



**Stern view 2**



**Bow**



**Sun Bathing**



**Cocktail tables**



**Upper salon**





**Upper salon 2**



**Upper salon couches**



**Helm**



**Galey**



**Lower salon**

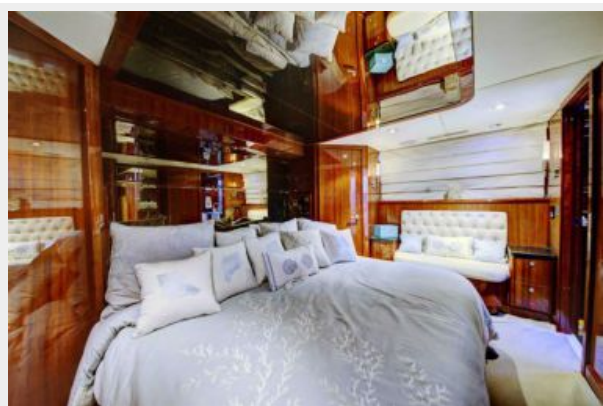


**Convertible twin cabin from to salon couch**





**Master**



**Master 2**



**Master ensuite**



**VIP**



**VIP 2**



**VIP ensuite**



**Crew bathroom**



**Crew cabin**



## Nav Electronics



## Engine room



## Sailing



# CONTACTS

---

Andrey Shestakov, leading yacht broker of the sales department of Shestakov Yacht Sales Inc. Shestakov Yacht Sales Inc., the official representative of the Miami/Fort Lauderdale FL headquarters.

## Contact details

---

Email: **andrey@shestakovyachtsales.com**

Web: [shestakovyachtsales.com/en/](http://shestakovyachtsales.com/en/)

## Telephones

---

USA: **+1(954)274-4435**

## Office hours

---

Monday – Saturday: **9:00 - 21:00 EDT**

Sunday: **closed**

## Address

---



Harbour Towne Marina, 850 NE 3rd St,  
STE 213, Dania, FL 33004