

## PURELY PLEASURE — SHOELL MARINE



**Судостроитель:** [Shoell Marine](#)

**Год постройки:** 2004

**Модель:** Мега-яхта

**Цена:** **ЦЕНА ЯХТЫ ПО ЗАПРОСУ**

**Местонахождение:** United States

**Длина общая:** 85' 0" (25.91m)

**Ширина:** 21' 4" (6.50m)

**Макс. осадка:** 4' 11" (1.50m)

**Крейс. скорость:** 32 Kts. (37 MPH)

**Макс. скорость:** 45 Kts. (52 MPH)

Купить **PURELY PLEASURE — Shoell Marine** а также выбрать подходящую вам яхту из нашего каталога яхт вам поможет опытный яхтенный брокер Андрей Шестаков. На сегодняшний день компания **Shestakov Yacht Sales Inc.** имеет большое количество яхт в собственном списке продаж, а также тесно сотрудничает со всеми крупными яхтенными производителями по всему миру.

Для того чтобы купить яхту **PURELY PLEASURE — Shoell Marine** а также проконсультироваться по любому вопросу связанному с покупкой, продажей, чартером яхт позвоните по телефону **+7(918)465-66-44**.

# ОГЛАВЛЕНИЕ

ОГЛАВЛЕНИЕ	2
ХАРАКТЕРИСТИКИ	3
Обзор	3
Основная информация	3
Размеры	3
Скорость, вместимость и масса	3
Размещение	3
Корпус и палуба	4
Информация о двигателе	4
ПОДРОБНОЕ ОПИСАНИЕ	5
Electronics & Audio Visual Systems	5
Exterior	6
Accommodations	7
Galley	9
Additional Information	9
Additional Equipment	11
Исключения	11
Отказ от ответственности	12
ФОТОГРАФИИ	13
КОНТАКТЫ	26
Контактная информация	26
Телефоны	26
Время работы	26
Адрес	26

# ХАРАКТЕРИСТИКИ

## Обзор

PLEASE CALL KIT DENISON TO ARRANGE A VIEWING

CELL: (954) 614-2888

## Основная информация

Тип судна: Мега-яхта

Модельный год: 2004

Год постройки: 2004

Страна: United States

## Размеры

Длина общая: 85' 0" (25.91m)

Длина палубы: 80' 0" (24.38m)

Ширина: 21' 4" (6.50m)

Макс. осадка: 4' 11" (1.50m)

Трапы: 20' 0" (6.10m)

Длина привального бруса: 78' 6"  
(23.93m)

## Скорость, вместимость и масса

Крейс. скорость: 32 Kts. (37 MPH)

Крейсерская скорость поворота: 1900 Kts.

Макс. скорость: 45 Kts. (52 MPH)

Макс. скорость поворота: 2300 Kts.

Водоизмещение: 120000 Pounds

Вместимость воды: 400 Gallons

Вместимость сточного бака: 150 Gallons Объем топливного бака: 4000 Gallons

## Размещение

Всего кают: 4

## Корпус и палуба

---

**Материал корпуса:** Fiberglass

## Информация о двигателе

---

**Двигатели:** 2

**Производитель:** Caterpillar

**Модель:** C-18

**Тип двигателя:** Inboard

**Тип топлива:** Diesel

---

# ПОДРОБНОЕ ОПИСАНИЕ

---

## Electronics & Audio Visual Systems

---

### ELECTRONICS:

VHF Radio(s): One (1) ICOM, ICM M602 & One (1) Panasonic - Hand Held VHF

Depth Sounder: Navnet Furuno VX2, color depth recorder

Knot Meter: Navnet Furuno VX2 & Northstar 972

Radar: Navnet Furuno VX2, AIS Radar System, with open array

GPS: Northstar 972, Navnet VX2

Compass: Two (2) Richie power Damp, Simrad IS15  
electric compass

Weather/Wind Inst: Weather Works system for the CPU units

### AUDIO-VISUAL:

TV's: Samsung Flat Screen (Master S/R);

Toshiba Flat Screen (Main Salon);

Sharp Flat Screen (VIP S/R, Guest S/R);

Audiovox Flat Screen (Crews' S/R).

Cable/Antenna: One (1) with Marineco outlet

VHS/DVD: Jamo, DVD, Sylvania 4-head VHS

SAT: Tracvision Six, Direct TV

Phone: Tracvision KVH - TRAC phone

Fax: Brother Fax/Printer

Surround Sound: Internal Stateroom systems

Amplifiers: Jensen model 3 MSR3007 - SIRUS AM/FM/CD

Speakers: Jensen & JBL, throughout vessel

- PC: Desktop, with keyboard, monitor, & printer
- Security: Simon vessel security system, with KTL # CDB 3002IR - Upgraded cameras on four (4) sides, and two (2) underwater cameras.
- Pixi & Linksis vessel identification system (Location, Lat/Long, speed, bilge, and pump readings;
- G.E. security system with external locks, alarms, and motion sensors.

---

## Exterior

---

If you have walked the docks of the **Ocean Reef Club** in North Key Largo, Florida, over the last 30 or so years, would have seen one of these "PURELY PLEASURE" yachts along the main bulkhead of the marina.

From a distance, it's hard to appreciate the scale of this 85 foot "Sport Yacht"...it could be 50 feet, or maybe 60 feet, but when you get closer, you are overwhelmed by the size and the powerful-looking profile (even though the yellow hull is synonymous with the word "*Caution*").

Jerry Herson, the owner and designer of PURELY PLEASURE (the third version of this uniquely-styled series of "Go-Fast" Mega Yachts), could easily be accused of "throwing *Caution to the winds*," but every detail was dreamed, then designed, then sketched, then engineered..and finally custom-built in light, but strong high tech GRP.

The Hull itself was designed by Harry Schoell, the founder of **Infinity Yachts**, and inventor of the "Delta-Conic" hull, with a deep-vee forward, and a stepped-vee aft, with longitudinal lifting strakes. The patented hull shape is both efficient and comfortable.

While the size of this latest design is 75% larger than the first one, the proportions are "Perfectly Pleasing" to the eye. The long, swept-back foredeck, superstructure and radar arch are all in glistening white Awl-Grip, providing a contrast with low profile yellow hull.

The low profile of the hull is given a pleasing proportion with the beam of over 21 feet. Looking forward from the wide transom swim platform and sundeck with sun pads and toys, you notice three large curved, panoramic windows - which define the aft end of the full width master stateroom.

If you were to walk forward along the dock, and assuming you were as tall as an NBA center (to see over the 7 foot free-board), you would be able to see the 40 foot long foredeck, with its recessed semi-circular seating area with dual hatches, lots of cushions, sun pads, and storage.

At the bow is a recessed anchor locker with a thru-hull anchor system. The stainless bow rail and continuous side rails are molded into the hull to eliminate fittings & thereby leaks. The extra heavy-duty cleats are also mounded into the hull.

The expensive Foredeck Seating Area has built-in speakers, and custom cushions to provide a true "Surround-Sound" even while underway. Looking aft from the swept-back foredeck, you see the wrap-around windshield, with its "EZ2CY Strata-Glass" enclosure connecting the windshield to the Arch/Hardtop.

The Cockpit & Helm Area is approximately 500 square feet, capable to entertain over two dozen guests in comfort. There's a control station with a full array of electronics to starboard, and plenty of bench seating behind the windshield, and under the Radar Arch. Two cameras are mounted on the wings of the Radar Arch, to provide views fore and aft, and port and starboard, and two cameras in the middle of the Arch for docking and security. Lightning Rods are installed on the top the Arch - 28 feet above the water.

Even the Life Rings are built into the sides of the structure. Solar Lights are above the boarding area and along the companionway.

There are built-ins on the aft side of the bench seating, including a full wet bar, grill, and more storage. There is "Jenn-Aire" grill built into a port side cabinet, along with storage under. A refrigerated wine cooler is built in to a long molded fiberglass cabinet to starboard, directly aft of the Helm Station.

There are also four good-sized teak tables on stainless pedestals in front of the aft curved settee, with lots of storage under. .

Port and starboard and integral with the Arch are the vertical Stainless air intake grills. Six steps aft takes you down to the aft swim/sun deck with hydraulic hatch access to the engines, and to the dinghy, with the port side davit.

The inflatable dinghy (see Photos) can collapse and store easily into the lazarette, through a motorized hatch. There is a davit under the hatch that can be mounted on the swim platform, and which also can be used in a "man-overboard" situation. There is a six-step swim ladder with bracket and a "Winslow" 8-man Life Raft, mounted on waterproof skids.

---

## Accommodations

---

### FORWARD VIP STATEROOM:

Just aft of the chain locker bulkhead is the VIP Stateroom, with a queen berth on the center line and storage underneath. There is a vanity and entertainment center to port, and just aft is the full en-suite head. A large closet is to starboard.

There's plenty of headroom here and throughout the accommodations, with five different and rare

veneers are used in the various spaces, over strong, lightweight cored panels.

### **STARBOARD GUEST STATEROOM:**

Leaving the VIP S/R, the flooring changes from beige carpeting to hardwood bamboo. The Starboard Guest Stateroom features a queen berth with storage under, and a long full-length hanging closet, and a full head and shower aft of the closet.

### **PORT GUEST STATEROOM:**

Across the hallway from the Starboard Guest S/R, is the Port Guest S/R, with its Twin Berths. There is a separate entrance to the Starboard Guest head.

There is storage and drawers, as well as some hanging lockers under the berths.

### **MAIN SALON:**

The Main Salon is directly aft, with a large Galley to port, and a curved counter-top with bar stools, which are molded into the deck, for extra strength.

Across from the Galley is an L-shaped settee with table, and a custom navigation center and the forward starboard end of the dinette settee.

### **MASTER STATEROOM:**

Aft of the Main Salon, is the entrance to the full-width Master, with "His & Hers" heads.

"Her" head is on the port side, while "His" head is to starboard, and both have Jacuzzi/showers, vanity and head.

Outboard to port and starboard are large hanging lockers, with a King berth on the center line, with storage under. In a very unique arrangement, the Master berth faces aft at the large, four-section curved glass windows - which look out over the swim platform and sun pad area.

At the forward end of the Master berth is an entertainment console, and more storage.

On the center line and below the sole, is a well-hidden "stair-master;" a weight-training system is built into one of the port lockers.

**SPIRAL STAIRS** ...Lead from the Main Salon up to the Bridge Deck and Helm Station.



## Galley

---

Ventilation:	120-V Fan (forced)
Stove/Range:	Profile, 120 V, with 5 Burner Range; + Jenn-Aire range at Helm station
Microwaves:	Two (2) G.E. Space Saver Model JUM-1650CH01, 120-V
Refrigeration:	G.E. Model PTS25LHRARCC, front load, Refrig/Freezer, w/Icemaker
Sink:	Single, deep-well Corian
Disposal:	G.E. - Insinkerator, 120-V
Hot Water:	Two (2), "Insta-Hot" hot water outlets, at galley and Helm sink.
Water Heater:	Atlantic Marine, 240E, 40 gallon, 120-V
Dishwasher:	G.E. Model GSM1800JWW, front load
Ice Maker:	Kitchen Aid, front load, 120-V
Wine Chiller:	Kitchen Aid, Multi-Rack, 120-V
Trash Compactor:	G.E. Profile, Model GCG1550FDCC, 120-V
Washer/Dryer:	G.E. Profile, 120-V
Vacuum:	Sea Vac, built-in system, 120-V
Additional/Misc:	Toaster, blender, coffee pot, cooking utensils, dishes, glasses, etc.

## Additional Information

---

### ELECTRICAL SYSTEM:

#### GENERATORS:

**Port Generator:** Onan, 21.5 kW, 4 Cylinder, Model MDKBE-5655474,

S/N L030584027, dual Racor Model 500-MA water-seperator

fuel filters, 4,220 hrs,

**Starboard Gen:** Onan, 12.5.kW, 4 Cylinder, Model MDKBE-565548,  
S/N L030579309, dual Racor Model 500-MA water-seperator  
fuel filters, 3,800 hrs

**Shore Power:** Dual 50 Amp - 120/240-V, with Marinco Shore Power fittings

**Batteries:** Eight (8) 12-V Heavy Duty Marine Batteries

**Battery Chgrs:** Two (2), Sentry, 60-Amp

**Wiring:** Thermoplastic & molded rubber

**Lighting:** 12-Volt for: Spreaders, instruments, compass, cabin, navigation,  
Anchor, & docking lights

24-Volt for: 4 Searchlights: 3 dual beams, & 1 "Flir" night-vision, &  
4 Transom lights, and 4 "Deep Down" LED Underwater lights

**STEERING:** Single station Hynautic hydraulic steering system, with integral  
Rudder linkage to Arneson Surface Drives;  
Simrad AP 20 autopilot

#### **AIR CONDITIONING SYSTEM:**

"Cruisair" - Chilled Water, Reverse Cycle, with two (2) - 36,000 BTU  
compressors with SMX automatic controls.

Seven (7) Air Handlers: two (2) 12,000, three (3) 16,000,  
& one (1) 9,000 BTU units.

**HEAD/TOILETS:** Five (5), Galley Maid, Porcelain bowl, 120-V,

150 Gallon Holding Tank, with Marelon Y-Valve, & Mascerator  
Pump, 120-V

## Additional Equipment

---

### ELECTRONICS:

### SAFETY EQUIPMENT:

Life Raft:	Winslow, Model MH80SLO, 2008, Eight (8) person #80-00369
First Aid Kit:	One (1)
Life Jackets:	Twelve (12) Type II, Adult; five (5) Type V, dry suit
Life Rings:	Four (4) - USCG approved
Fire Extinguishers:	Six (6) portable, 1A-10BC, one (1) 40 lb. Dry Chemical
Auto Eng Rm Fire Sys:	Pemall, FM200, clean agent automatic system
Fume Detector:	One (1)
Flares:	One set
E.P.I.R.B.:	GRIRB II, # 2DCC3FB402FFBFF
Horn:	T24-Triple trumpet, 24V
Bilge Pumps:	Eleven (11), 24-V, with automatic float switches
Ship's Bell:	One (1)
Ground Tackle:	Maxwell 24-V windlass, custom installed at bow, with anchor
Additional:	Dock lines and Fenders
Sea Anchor:	One (1)
Dinghies:	One (1) "Aqua Scan" inflatable Jet Boat, (H.I.N. # USXIWF1407D808), Reg MD-0965-BZ  Two (2) Paddle Boats

## Исключения

---

При продаже яхты исключаются личные вещи владельца.

## **Отказ от ответственности**

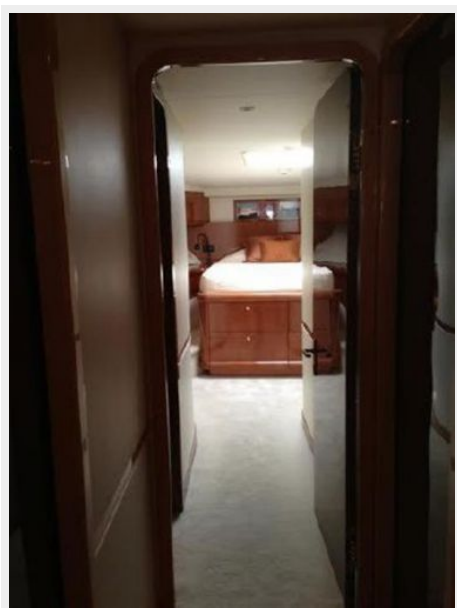
---

Компания предоставляет описание судна или яхты добросовестно, но не может гарантировать точность этой информации, а также не ручается за техническое состояние. Покупатель должен проинструктировать своих агентов или оценщиков исследовать представленную информацию более подробно, по собственному желанию. Продажа судна или яхты, изменение цены или снятие с продажи будет происходить без предварительного уведомления.

# ФОТОГРАФИИ

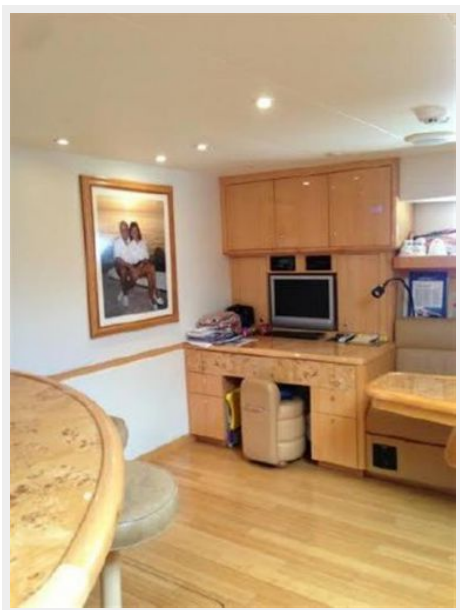










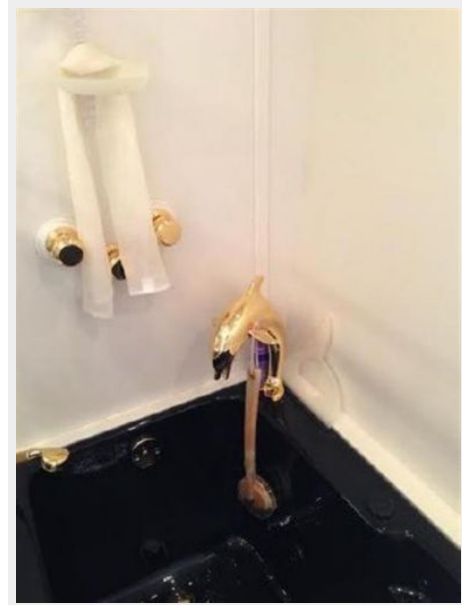
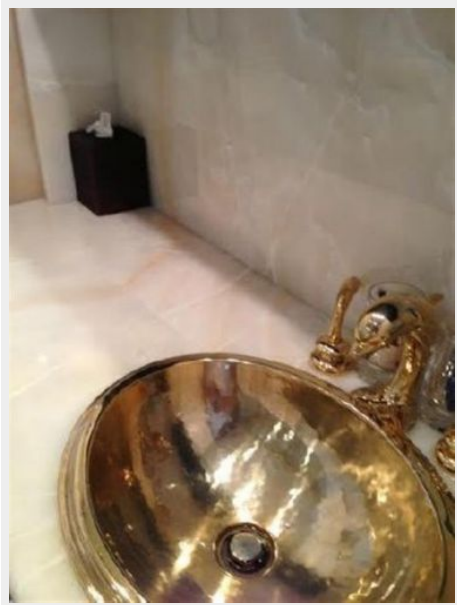








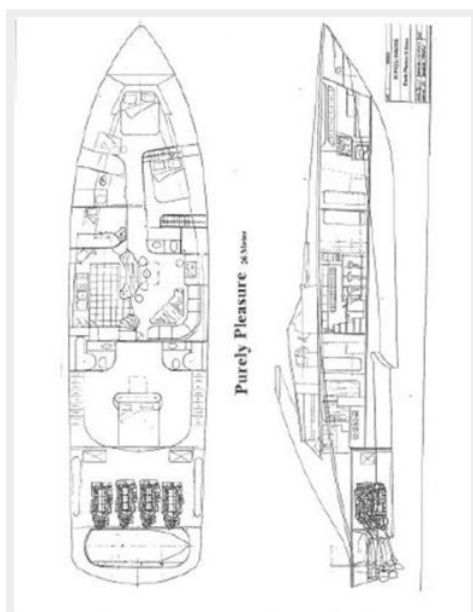
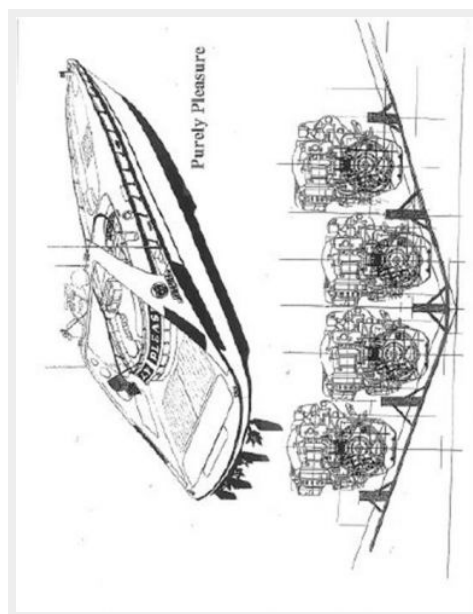












# КОНТАКТЫ

---

Андрей Шестаков (Andrey Shestakov) – ведущий яхтенный брокер отдела продаж яхт и судов компании Shestakov Yacht Sales Inc. Официальный представитель Shestakov Yacht Sales Inc. для русскоговорящих клиентов в центральном офисе компании в Майами/Форт Лодердейл/Флорида/США.

## Контактная информация

---

Email: [andrey@shestakovyachtsales.com](mailto:andrey@shestakovyachtsales.com)

Web: [shestakovyachtsales.com](http://shestakovyachtsales.com)

## Телефоны

---

Краснодарский край: **+7(918)465-66-44**

США, Майами, Флорида: **+1(954)274-4435**

## Время работы

---

Понедельник – Суббота: **9:00 - 21:00**  
EDT

Воскресенье: **Закрето**

## Адрес

---



Harbour Towne Marina, 850 NE 3rd St,  
STE 213, Dania, FL 33004