

MARY'S CHOICE — SEA RAY



Builder: SEA RAY

Year Built: 2003

Model: Motor Yacht

Price: PRICE ON APPLICATION

Location: United States

LOA: 40' 0" (12.19m)

Beam: 14' 3" (4.34m)

Max Draft: 3' 4" (1.02m)

Our experienced yacht broker, Andrey Shestakov, will help you choose and buy a yacht that best suits your needs **Mary's Choice — SEA RAY** from our catalogue. Presently, at Shestakov Yacht Sales Inc., we have a wide variety of yachts available on our sale's list. We also work in close contact with all the big yacht manufacturers from all over the world.

If you would like to buy a yacht **Mary's Choice — SEA RAY** or would like help answering any questions concerning purchasing, selling or chartering a yacht, please call **+1(954)274-4435**

TABLE OF CONTENTS

TABLE OF CONTENTS	2
SPECIFICATIONS	5
Basic Information	5
Dimensions	5
Speed, Capacities and Weight	5
Accommodations	5
Hull and Deck Information	5
Engine Information	5
DETAILED INFORMATION	6
Manufacturer Provided Description	6
Additional	6
Exclusions	6
Disclaimer	6
PHOTOS	8
Port close up	8
Port profile	8
Aft Port View	8
Bow/windlass	8
From bow	8
Starboard Closeup	8
Flybridge enclosure	9
Bottom Paint in Oct. 2013	9
Aft deck	9
Layout	9
Aft deck	9
Aft deck	9
Aft deck to flybridge	10
Aft deck	10

Salon aft port	10
Salon table and stools stored ashore	10
Salon forward port	10
Salon forward port	10
Nice pull out storage	11
Dining	11
Salon forward	11
Salon Starboard Aft	11
Clean, plush carpet throughout	11
Aft deck	11
Galley sole	12
Large storage under galley sole	12
Full upright refrigerator freezer	12
Electric Stove	12
Microwave	12
Galley close up	12
Galley close up	13
Master Salon Looking aft	13
Master Berth	13
Master Berth	13
Guest Berth converts to one king	14
Flybridge	14
Flybridge	14
Helm station full	14
Helm station closeup	14
Helm station closeup	15
Helm station closeup	15
Helm seat	15
Flybridge aft	15

Flybridge aft	15
CONTACTS	16
Contact details	16
Telephones	16
Office hours	16
Address	16

SPECIFICATIONS

Basic Information

Category: Motor Yacht

Model Year: 2003

Year Built: 2003

Country: United States

Dimensions

LOA: 40' 0" (12.19m)

Beam: 14' 3" (4.34m)

Max Draft: 3' 4" (1.02m)

Speed, Capacities and Weight

Displacement: 22000 Pounds

Water Capacity: 120 Gallons

Holding Tank: 40 Gallons

Fuel Capacity: 350 Gallons

Accommodations

Total Berths: 6

Total Heads: 2

Hull and Deck Information

Hull Material: Fiberglass

Engine Information

Engines: 2

Manufacturer: Cummins

Model: 6CTA 8.3M

Engine Type: Inboard

Fuel Type: Diesel

DETAILED INFORMATION

Manufacturer Provided Description

The Sea Ray 400 Sedan Bridge features an interior plan that suits any lifestyle, plus all the luxury and convenience inherent in a Sea Ray.

Additional

- Bimini & enclosure **New Oct 2010**
- Electric anchor windlass - controls on deck and remote controls at helm
- Spotlight with remote control from helm
- Full back enclosure canvas
- Aft Sunshade
- Interior Salon Sunshade

ELECTRONICS

- Chartplotter/Display - Pathfinder RC80C - RayMarine
- Radar - RayMarine
- Autopilot - ST7001+ Autohelm - RayMarine
- Tri Data ST 60 - RayMarine
- GPS RN300
- Ray 55 VHF - **New Apr 2014**

CONVEYANCE

- All fenders, lines and power cords, spare parts, bedding and floor coverings, convey with the boat.
- Deck chair, table lamps and any personal items do not convey with boat.

Exclusions

Owner's personal belongings.

Disclaimer

The Company offers the details of this vessel or yacht in good faith but cannot guarantee or warrant the accuracy of this information nor warrant the condition of the vessel. A buyer should instruct his representatives, agents, or his surveyors, to investigate such details as the buyer

desires validated. This vessel or yacht is offered subject to prior sale, price change, or withdrawal without notice.

PHOTOS

Port profile



Port close up



Aft Port View



Bow/windlass



From bow



Starboard Closeup



Flybridge enclosure



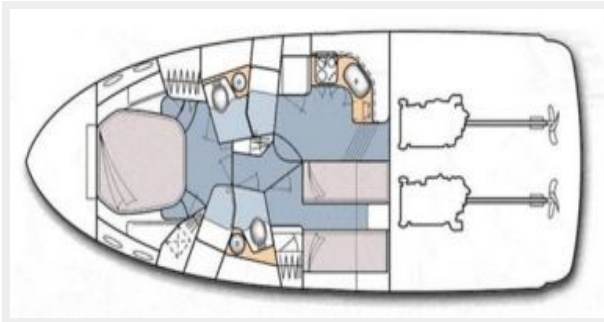
Bottom Paint in Oct. 2013



Aft deck



Layout



Aft deck



Aft deck



Aft deck to flybridge



Aft deck



Salon aft port



Salon table and stools stored ashore



Salon forward port



Salon forward port



Nice pull out storage



Dining



Salon forward



Salon Starboard Aft



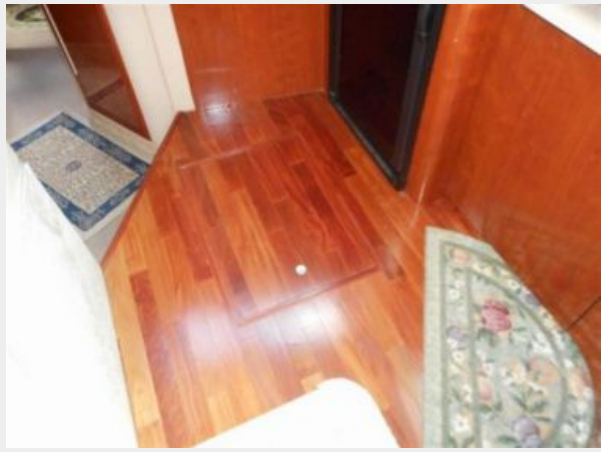
Clean, plush carpet throughout



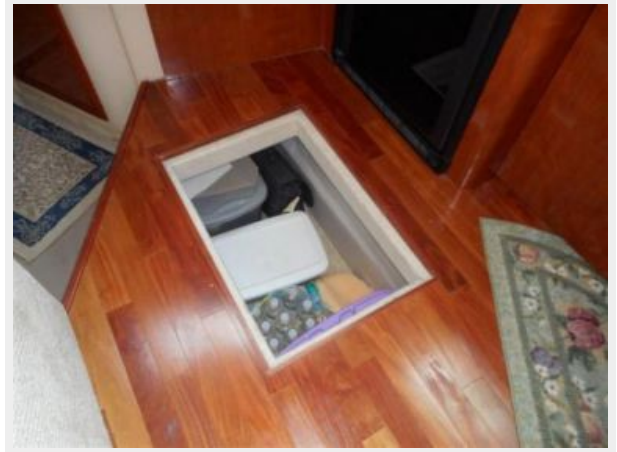
Aft deck



Galley sole



Large storage under galley sole



Full upright refrigerator freezer



Electric Stove



Microwave



Galley close up



Galley close up



Master Salon Looking aft



Master Berth



Master Berth





Guest Berth converts to one king



Flybridge



Flybridge



Helm station full



Helm station closeup



Helm station closeup



Helm station closeup



Helm seat



Flybridge aft



Flybridge aft



CONTACTS

Andrey Shestakov, leading yacht broker of the sales department of Shestakov Yacht Sales Inc. Shestakov Yacht Sales Inc., the official representative of the Miami/Fort Lauderdale FL headquarters.

Contact details

Email: andrey@shestakovyachtsales.com

Web: shestakovyachtsales.com/en/

Telephones

USA: +1(954)274-4435

Office hours

Monday – Saturday: **9:00 - 21:00** EDT

Sunday: **closed**

Address



Harbour Towne Marina, 850 NE 3rd St,
STE 213, Dania, FL 33004