

# GENERAL'S LADY — HATTERAS

1989 40 FT Hatteras Double Cabin

*" General's Lady "*



**Builder:** HATTERAS

**Year Built:** 1989

**Model:** Motor Yacht

**Price:** PRICE ON APPLICATION

**Location:** United States

**LOA:** 40' 0" (12.19m)

**Beam:** 13' 7" (4.14m)

**Cruise Speed:** 18 Kts. (21 MPH)

**Max Speed:** 20 Kts. (23 MPH)

Our experienced yacht broker, Andrey Shestakov, will help you choose and buy a yacht that best suits your needs **General's Lady — HATTERAS** from our catalogue. Presently, at Shestakov Yacht Sales Inc., we have a wide variety of yachts available on our sale's list. We also work in close contact with all the big yacht manufacturers from all over the world.

If you would like to buy a yacht **General's Lady — HATTERAS** or would like help answering any questions concerning purchasing, selling or chartering a yacht, please call **+1(954)274-4435**

---

# TABLE OF CONTENTS

---

TABLE OF CONTENTS	2
SPECIFICATIONS	3
Basic Information	3
Dimensions	3
Speed, Capacities and Weight	3
Hull and Deck Information	3
Engine Information	3
DETAILED INFORMATION	4
Additional Specs,	4
Accommodations	4
Salon	4
Galley	4
Aft Deck	4
Electrical	4
Engine Room	5
Exclusions	5
Disclaimer	5
PHOTOS	6
CONTACTS	16
Contact details	16
Telephones	16
Office hours	16
Address	16

---

# SPECIFICATIONS

---

## Basic Information

---

**Category:** Motor Yacht

**Model Year:** 1989

**Year Built:** 1989

**Country:** United States

## Dimensions

---

**LOA:** 40' 0" (12.19m)

**Beam:** 13' 7" (4.14m)

## Speed, Capacities and Weight

---

**Cruise Speed:** 18 Kts. (21 MPH)

**Max Speed:** 20 Kts. (23 MPH)

**Displacement:** 39000 Pounds

## Hull and Deck Information

---

**Hull Material:** Fiberglass

## Engine Information

---

**Engines:** 2

**Manufacturer:** Caterpillar

**Model:** 3208TA

**Engine Type:** Inboard

**Fuel Type:** Diesel

---

## DETAILED INFORMATION

---

### Additional Specs,

---

- **Builder/Designer**
- Hatteras
- **Dimensions**
- **LOA 40'      Beam 13.7      Displacement 39000**
- **Engines Caterpillar      HP 375      Engine Models 3208TA**
- **600 Hours      Cruise Speed 18      Max Speed 20**

### Accommodations

---

**Master Stateroom:** The master stateroom features queen berth, mirrored aft bulkhead behind upholstered headboard, T/V, extensive storage space including ten dresser drawers and a private head with a shower. Sliding windows and a large transom port light gives this stateroom a bright and airy feel. Bow stateroom has vee-berths and ample drawer space along with hanging locker space. Aft on the port side is a second stall shower, linen locker and a medicine cabinet.

### Salon

---

Salon features L-shaped sofa

### Galley

---

- **Refrigerator/Freezer**
- **Princess 3 burner electric stove**
- **10 Gal electric water heater**
- **Large two drawer storage unit**

### Aft Deck

---

The aft deck is surrounded by stainless steel rails and a molded-in storage box. The bridge area is three steps up from the aft deck and has the control console located aft giving good visibility forward or aft, and a forward facing riding seat for three persons. A hardtop over the fly bridge & aft deck is offered for weather protection.

### Electrical

---

- **24 DC electrical system**
- **8 kW onan generator**
- **Automatic battery charger**
- **110V & 12V outlets through out the boat**
- **110V AC electrical system**
- **2 Batteries W/parallel switch**
- **Dockside electrical cable**

---

## **Engine Room**

---

- Reverse cycle air conditioning
- Halon manual fire control system
- fuel shut off valve
- Bennett trim tabs
- Bridge hydraulic steering
- Engine synchronizers
- 2 bilge blowers

---

## **Exclusions**

---

Owner's personal belongings.

---

## **Disclaimer**

---

The Company offers the details of this vessel or yacht in good faith but cannot guarantee or warrant the accuracy of this information nor warrant the condition of the vessel. A buyer should instruct his representatives, agents, or his surveyors, to investigate such details as the buyer desires validated. This vessel or yacht is offered subject to prior sale, price change, or withdrawal without notice.

# PHOTOS



**Bow**



**Port Running Gear**



**Starboard Stern**



**Underway**



**View Aft**



**Aft Deck**



**Seating**



**AC Electrical Panel Lower**



**Island Queen Berth**



**Bathroom**



**Port Main Engine**

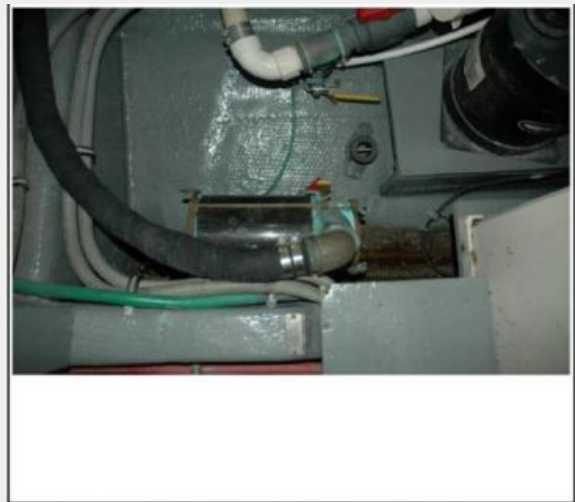


**Fuel Manifold**

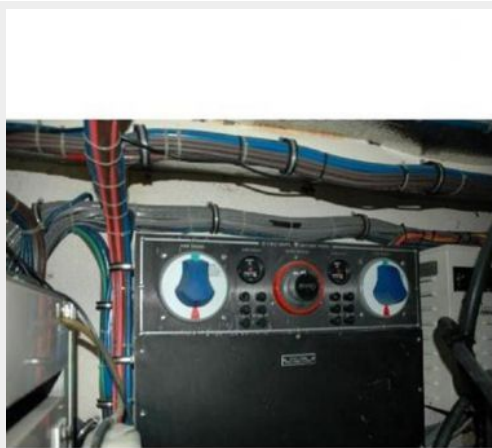




**Hot Water Heater**



**Sea Strainer**



**Battery Switches**



**Washer Dryer**



**Fridge Freezer**



**Salon**



**Wet Bar**



**Fuel Fill**



**Windlass**



**Bow**



**Helm**



**Sofa**



**AC Electrical Panel**



**DC Electrical Panel**



**Keel Fuel Tank**



**Rudder Stock**



**Starboard Main Engine**



**Main Engine Exhaust**



**Halon Fixed Fire System**



**Air Con and Battery Switches**



**Generator**



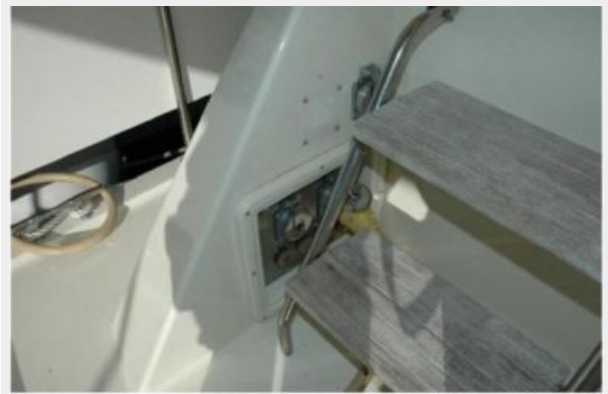
**Stove and Microwave**



**Galley Sink**



**Hardtop**



**Shore Power**



**Transom and Swim Platform**



**Starboard Running Gear**

---

# CONTACTS

---

Andrey Shestakov, leading yacht broker of the sales department of Shestakov Yacht Sales Inc. Shestakov Yacht Sales Inc., the official representative of the Miami/Fort Lauderdale FL headquarters.

---

## Contact details

---

Email: [andrey@shestakovyachtsales.com](mailto:andrey@shestakovyachtsales.com)

Web: [shestakovyachtsales.com/en/](http://shestakovyachtsales.com/en/)

---

## Telephones

---

USA: +1(954)274-4435

---

## Office hours

---

Monday – Saturday: **9:00 - 21:00** EDT

Sunday: **closed**

---

## Address

---



Harbour Towne Marina, 850 NE 3rd St,  
STE 213, Dania, FL 33004