

## GRACIE — TOLLYCRAFT



**Builder:** TOLLYCRAFT

**Year Built:** 1990

**Model:** Motor Yacht

**Price:** PRICE ON APPLICATION

**Location:** United States

**LOA:** 44' 0" (13.41m)

**Beam:** 14' 8" (4.47m)

**Min Draft:** 3' 6" (1.07m)

Our experienced yacht broker, Andrey Shestakov, will help you choose and buy a yacht that best suits your needs **GRACIE — TOLLYCRAFT** from our catalogue. Presently, at Shestakov Yacht Sales Inc., we have a wide variety of yachts available on our sale's list. We also work in close contact with all the big yacht manufacturers from all over the world.

If you would like to buy a yacht **GRACIE — TOLLYCRAFT** or would like help answering any questions concerning purchasing, selling or chartering a yacht, please call **+1(954)274-4435**

# TABLE OF CONTENTS

TABLE OF CONTENTS	2
SPECIFICATIONS	4
Basic Information	4
Dimensions	4
Speed, Capacities and Weight	4
Accommodations	4
Hull and Deck Information	4
Engine Information	5
DETAILED INFORMATION	6
Bridge including Electronics	6
Accommodations	6
Sundeck	6
Salon	6
Galley/Dinnette	7
Master Stateroom	7
Master Head	7
Guest Stateroom	7
Guest Head	7
Engine Room	8
Cockpit/ Swim Platform	8
Anchoring	8
Exclusions	8
Disclaimer	8
PHOTOS	9
Bridge	9
VIP Forward	9
Master Vanity	9
Master	9

---

Master	10
Galley	10
Dinette	10
Salon	10
Salon/Dinette	10
Breakfast Bar	10
Forward from Salon	11
Bridge from SunDeck	11
Cockpit	11
Generator	11
Galley	12
Salon	12
Engine Room	12
Engine Room	12
Helm	12
CONTACTS	13
Contact details	13
Telephones	13
Office hours	13
Address	13

---

# SPECIFICATIONS

---

## Basic Information

---

**Category:** Motor Yacht

**Sub Category:** Sedan Cruiser

**Model Year:** 1990

**Year Built:** 1990

**Country:** United States

**Vessel Top:** Hardtop

**Fly Bridge:** Yes

**Cockpit:** Yes

## Dimensions

---

**LOA:** 44' 0" (13.41m)

**Beam:** 14' 8" (4.47m)

**Min Draft:** 3' 6" (1.07m)

**Clearance:** 16' 6" (5.03m)

## Speed, Capacities and Weight

---

**Displacement:** 28 Pounds

**Water Capacity:** 140 Gallons

**Fuel Capacity:** 398 Gallons

## Accommodations

---

**Total Cabins:** 2

**Total Berths:** 3

**Sleeps:** 6

**Total Heads:** 2

## Hull and Deck Information

---

**Hull Material:** Fiberglass

**Hull Configuration:** Modified V-Hull

**Hull Color:** white

---

## Engine Information

---

**Engines:** 2

**Manufacturer:** Detroit Diesel

**Model:** 6V53TI

**Engine Type:** Inboard

**Fuel Type:** Diesel

---

## DETAILED INFORMATION

---

### Bridge including Electronics

---

- Four sided Strataglass Enclosure
- Captain/Mate Helm Chairs
- Bench seating with storage
- Dual engine instrumentation
- Recent electronics include, Ray Marine ST 40 Wind meter,ST70 Auto Pilot,C90 color GPS/Plotter, Garmin 4210GPS/Blue Chart Maps, Furuno FCV-620 Depth/Fish finder, Furuno 1712 Radar, Horizon Spectrum and ICOM M100 VHF radios
- Guest High intensity remote search light
- PA /Hailer
- Micro Commander Electronic controls.
- Glendenning Synchronizer
- Data Marine depth finder

### Accommodations

---

Aft full Beam Master Stateroom with center island Queen bed, full head and lots of natural light. Large V-Berth forward with head and stall shower. Large Salon with comfortable seating and sofa that converts to double bed. Mid level full galley with separate Dinette to Starboard.

### Sundeck

---

- Hardtop
- Stainless rails with Sunbrella safety enclosure with aft sight Strataglass
- Carpeted deck with table and chairs
- Access to Cockpit, Bridge and Salon

### Salon

---

- Updated stain resistant Beige carpeting
- Convertible sofa
- Two leather barrel chairs with Ottomans
- Entertainment center with Flat Screen TV/VCR, FM Radio and CD player
- Icemaker
- Teak cabinets for storage
- Engine room Access

---

## Galley/Dinnette

---

- Dual Stainless Steel Sinks.
- Micro Wave
- Princess three burner stove with Oven
- Trash compactor
- Full Size Refrigerator and Freezer
- Very ample storage above and below galley counter top
- Dinette seating for four, converts to double sleeping berth

---

## Master Stateroom

---

- Full Beam
- Center Island Queen Berth
- Full head with separate stall shower
- Dedicated AC controls
- Lots of storage, natural light and a built in Vanity
- Six foot plus head room

---

## Master Head

---

- Separate enclosed Shower
- Vanity with sink
- Medicine cabinet
- Port Light
- Galley Maid Delta Toilet

---

## Guest Stateroom

---

- V- Berth with upholstered filler
- New fabric on bed Cushions
- Port Light
- Hanging Locker

---

## Guest Head

---

- Vanity with Sink
- Separate Stall Shower
- Port light
- Galley Maid Delta Toilet

---

## Engine Room

---

Twin 6V53TIs, 2000 hrs. 400 Horsepower each

- Dual Racor Fuel Filters
- 10 Gal Hot water Heater
- Three batteries for house and engines
- Battery Charger
- Spare Props
- Spare Anchor
- Oil change system

---

## Cockpit/ Swim Platform

---

- Transom Door
- Access to 9KW Kohler Generator in Sound Shield, three years old
- Wash down outlets
- Swim Platform with Davits for inflatable tender
- Hand held Hot and Cold Shower
- Four Rod Holders
- Stainless Swim Ladder

---

## Anchoring

---

- Dow Pulpit
- Maxwell Windless
- 200 feet of chain

---

## Exclusions

---

Owner's personal belongings.

---

## Disclaimer

---

The Company offers the details of this vessel or yacht in good faith but cannot guarantee or warrant the accuracy of this information nor warrant the condition of the vessel. A buyer should instruct his representatives, agents, or his surveyors, to investigate such details as the buyer desires validated. This vessel or yacht is offered subject to prior sale, price change, or withdrawal without notice.



# PHOTOS



**Bridge**



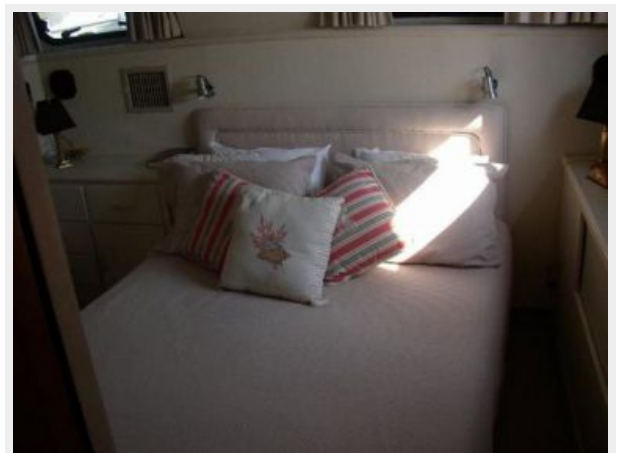
**VIP Forward**



**Master Vanity**



**Master**



**Master**



**Galley**



**Dinette**



**Salon**



**Salon/Dinette**



**Breakfast Bar**



**Forward from Salon**



**Bridge from SunDeck**



**Cockpit**



**Generator**



**Galley**



**Salon**



**Engine Room**



**Engine Room**



**Helm**



# CONTACTS

---

Andrey Shestakov, leading yacht broker of the sales department of Shestakov Yacht Sales Inc. Shestakov Yacht Sales Inc., the official representative of the Miami/Fort Lauderdale FL headquarters.

## Contact details

---

Email: [andrey@shestakovyachtsales.com](mailto:andrey@shestakovyachtsales.com)

Web: [shestakovyachtsales.com/en/](http://shestakovyachtsales.com/en/)

## Telephones

---

USA: +1(954)274-4435

## Office hours

---

Monday – Saturday: **9:00 - 21:00** EDT

Sunday: **closed**

## Address

---



Harbour Towne Marina, 850 NE 3rd St,  
STE 213, Dania, FL 33004