

BEAUTIFUL UPGRADES! MUST SEE! — CARVER



Судостроитель: CARVER

Год постройки: 2006

Модель: Моторная яхта

Цена: ЦЕНА ЯХТЫ ПО ЗАПРОСУ

Местонахождение: United States

Длина общая: 56' 0" (17.07m)

Ширина: 15' 4" (4.67m)

Макс. осадка: 4' 9" (1.45m)

Крейс. скорость: 25 Kts. (29 MPH)

Купить **BEAUTIFUL UPGRADES! MUST SEE! — CARVER** а также выбрать подходящую вам яхту из нашего каталога яхт вам поможет опытный яхтенный брокер Андрей Шестаков. На сегодняшний день компания **Shestakov Yacht Sales Inc.** имеет большое количество яхт в собственном списке продаж, а также тесно сотрудничает со всеми крупными яхтенными производителями по всему миру.

Для того чтобы купить яхту **BEAUTIFUL UPGRADES! MUST SEE! — CARVER** а также проконсультироваться по любому вопросу связанному с покупкой, продажей, чартером яхт позвоните по телефону **+7(918)465-66-44**.

ОГЛАВЛЕНИЕ

ОГЛАВЛЕНИЕ	2
ХАРАКТЕРИСТИКИ	5
Основная информация	5
Размеры	5
Скорость, вместимость и масса	5
Размещение	5
Корпус и палуба	5
Информация о двигателе	6
ПОДРОБНОЕ ОПИСАНИЕ	7
Key Features	7
Aft Deck	7
Main Salon	7
Galley	8
Lower Helm	9
Master Stateroom	9
Master En-Suite Head	10
VIP Stateroom	11
VIP En-Suite Head	12
Guest Stateroom	12
Flybridge	12
Bow and Deck Equipment	13
Engine Room	14
Electrical	15
EXCLUSIONS	15
Remarks	15
Исключения	15
Отказ от ответственности	15
ФОТОГРАФИИ	17

Profile	17
Profile	17
Profile	17
Salon	17
Salon Seating	17
Salon	17
Salon Seating	18
Galley	18
Galley	18
Galley	18
Galley	18
Helm	18
Helm	19
Helm	19
Helm	19
Helm	19
Helm	19
Helm Electronics	19
Helm Electronics	20
Stairs	20
Master	20
Master	20
Master Head	20
Washer & Dryer	20
VIP Head	21
VIP	21
Stateroom	21
Flybridge	21
Flybridge	21

Flybridge Helm	21
Grill	22
Flybridge Helm	22
Aft	22
Flybridge Seating	22
Bow	22
Aft	22
Aft Seating	23
Flybridge Wide	23
Media	23
КОНТАКТЫ	24
Контактная информация	24
Телефоны	24
Время работы	24
Адрес	24

ХАРАКТЕРИСТИКИ

Основная информация

Тип судна: Моторная яхта

Подкатегория: Flybridge

Модельный год: 2006

Год постройки: 2006

Страна: United States

Размеры

Длина общая: 56' 0" (17.07m)

Ширина: 15' 4" (4.67m)

Макс. осадка: 4' 9" (1.45m)

Трапы: 19' 0" (5.79m)

Длина привального бруса: 59' 2"
(18.03m)

Скорость, вместимость и масса

Крейс. скорость: 25 Kts. (29 MPH)

Водоизмещение: 52500 Pounds

Вместимость воды: 200 Gallons

Вместимость сточного бака: 100 Gallons

Объем топливного бака: 800 Gallons

Размещение

Всего кают: 3

Всего коек: 4

Всего ком. состава: 2

Корпус и палуба

Материал корпуса: Fiberglass

Информация о двигателе

Двигатели: 2

Производитель: Volvo

Модель: D12EVC

Тип двигателя: Inboard

Тип топлива: Diesel

ПОДРОБНОЕ ОПИСАНИЕ

Key Features

UNDER WATER LIGHTS!!600LB DAVIT AND CHOCKS ON BOAT DECK!!LED LIGHTS IN FLYBRIDGE AND AFT DECK!!BOW THRUSTER!!AFT DOCKING STATION!!AIR CONDITIONED FLYBRIDGE!!FULL FLYBRIDGE ENCLOSURE!! BEAUTIFUL INTERIOR UPGRADES!! 3 STATEROOM LAYOUT!! METICULOUSLY MAINTAINED!! MOTIVATED SELLER MAKE AN OFFER TODAY!!

Aft Deck

Boarding the Aft Deck you are greeted with a perfect setting in which to enjoy moments of relaxing conversation against the ever-changing backdrop of the sea. Ergonomically designed you will find all the necessary amenities close by for whatever the occasion calls for. This open Mediterranean style aft deck is an absolutely magnificent lounge and alfresco dining location. A built in centerline settee that can easily accommodate 8 guests. Easy access to the Flybridge is made via a stairway on the port side. A large door opens the the aft deck to the salon and the combination creates an expansive entertaining area!

- Grab rails (3) , stainless steel, port, starboard, top of transom
- Storage lockers (2) transom, for stowing shore water hoses and shore power lines
- 69 sq. ft. (approx), integral to hull and deck, self-draining
- 110V outlet, GFCI protected
- Bolsters across transom
- Bridge stairway, stainless steel, with stainless steel hand rail, diamond pattern fiberglass non-skid steps
- Cleats (2) 12" stainless steel, with aluminum backing plate, inboard-mounted with stainless steel fair leads
- (2) stainless steel grab rails near side deck stairways
- Watertight engine room access hatch
- Lights (4), courtesy, recessed, with exterior mounted switch
- Lights (8) LED, overhead, recessed, with exterior mounted switch
- Overhead sun/weather protection 7' from cabin toward stern
- Side deck stairways (2), integral to deck
- Stereo speakers (2)
- Transom door, aluminum, secures closed, stainless steel hardware
- No Flybridge or Cockpit carpets

Main Salon

An unprecedented expansive entertaining and lounge area! The salon on this Carver is the perfect vantage point to enjoy the vista. This exclusive living space is distinguished by sophisticated interior styling to satisfy your every need while on board. Exquisite Cherry Wood paneling and chocolate leather couches creates a rich comfortable feel.

- 110VGFCI protected outlet
- AC and DC distribution panels
- Mirror with encircling bands of ultraleather and cherry wood, overhead
- Oak Wood Floors
- Curtain - decor matched, horizontal action, sealed in top and bottom channel guides in front of entrance door
- Component stereo including Sony AM/FM receiver, 5-disc DVD changer, Sirius satellite radio system, Bose speakers
- Entrance door - stainless steel frame, fully vertical, convex sliding, handle latch, deadbolt, secures open, neutral density glass, with interior screen
- Lights (4) - halogen, in soffit, recessed, directable
- Lights (13) - halogen, in architectural element, recessed, with electronic dimmer controls
- Lights (2) - halogen, sconces, brushed nickel
- Rocker light switch
- Sofa - Turns into a bed
- Soffit - ultraleather and curved sapele pommele, over windows
- Storage cabinets (3)
- Table - solid wood top, swivel-out leaf, brushed aluminum base, adjustable height and storage underneath
- Window treatment - Roman shades with recessed headrail

Galley

Forward of the salon along the port side is the Galley. Nothing has been spared in this space. A perfect nook that can accommodate all your guests comfortably while enjoying the company of the Chef tantalizing your taste-buds with culinary sensations. The opulence is continued with beautiful cherry wood and designer stainless steel appliances. Directly opposite the galley is a high gloss dinette that provides enough room to dine six. All the comforts of home within the luxury of a Carver.

- 110V outlet, GFCI protected
- Designer decor
- Flooring, granite tile
- Lights (2), halogen, over range, recessed
- Lights (9), halogen, overhead, recessed
- 3-burner Ceran top electric range with stainless steel back-splash
- Coffee maker
- Range vent

- (4) Sub Zero refrigeration drawers
- Rocker light switches
- Sink, stainless steel, two basin, under-mount
- Snack bar
- Storage cabinets (5)
- Storage drawers (6)

DINETTE

- Patterned cut and loop saxony carpet, 100% nylon with advanced stain protection
- (4) recessed Halogen lights in soffit, directional
- (2) Halogen brushed nickel sconce lights
- U-shaped Ultraleather lounge seats 5 adults
- 110V GFCI protected outlet
- Ultraleather soffit over windows with curved sapele pomelle
- Table, sapele pomelle inlay top with cherry wood trim and sea rail, stainless steel base with 3 legs
- Roman shade window treatments with recessed headrail

Lower Helm

Easy access from the main deck level is the Lower Helm Deck. The helm station is perfectly situated providing great visibility and comfort. Everything you need to take you safely to your next destination is here. Ergonomically designed for easy use mixed with the style that only a Carver can supply.

- Northstar 6001
- Furuno Navnet with Furuno
- VHF
- ST60 Tridata
- Autopilot ST6001
- 4KW 24" Radome
- D5M 250 digital sounder with bronze thru hull
- Voyager reverse camera and engine room camera
- Intercom system
- Trac Vision with Gyro Phone-com multi "3" station
- Sirius satellite radio
- Satellite TV
- Volvo electronic engine displays
- Volvo electronic controls
- Sea Key system

Master Stateroom

The impressive owners suite is full beam and features king size berth with built-in night stands on either side. Custom fabrics and high gloss cherry paneling creates an inviting feeling. Forward on the port and starboard side is a very spacious cedar lined wardrobe. Plenty of drawer space is located on both the port and starboard sides.

- Full size washer and dryer
- 20" LCD flat screen TV
- Carpet - tufted cut pile, 65 oz. crush resistant, 100% nylon
- Countertops - sapele pommele inlay with cherry wood trim and sea rail
- Sheet set
- Designer decor
- Entrance door - 2 panel, solid cherry wood frame with sapele pommele panels exterior, cherry wood panels interior, pocket style, secures open and closed, stainless steel hardware
- Fresh air system - passive, with 5 controllable overhead vents
- 110V outlets (3), GFCI protected
- Hanging lockers (3) - 2 full height, 1 half height, cedar lined, carpeted, overhead shelf (in full height lockers), automatic light
- Lights (2) - halogen, sconces, directable for reading
- Lights (4) - halogen, overhead, recessed
- Lights (2) - halogen, over dresser, recessed
- Mini blinds - decor matched
- Mirror on aft bulkhead
- Mirror over berth head
- Portlights (2) - with screen
- Rocker light switches
- Storage cabinets (5)
- Storage drawers (5)

Master En-Suite Head

Forward on the starboard side is the entrance to the owners ensuite head. Modern and richly appointed this expansive his and her bath that features a shower with tub. This space also includes a sink and vanity. Excellent storage is available in the cabinets below.

- Bath tub
- Brass/chrome hardware
- Rocker light switches
- Towel set
- 110V outlets (2), GFCI protected
- Carpet - tufted cut pile, 65 oz., crush resistant, 100% nylon
- Lights (3) halogen, overhead, recessed
- Lights (2) halogen, over vanity, recessed

- Medicine cabinets (2) - 3 shelves each
- Mirror, above vanity
- Soap dish, solid glass, wall mounted
- Towel rings (2)
- Vanity - solid surface top and backsplash, integral molded solid surface sink, 2 shelves beneath with 2 doors
- Toilet, vacuflush

VIP Stateroom

All the forward is the VIP Stateroom. The elegance comfort and sensuous lines of the yacht are also found here. A queen island berth is easily accessible from either side. The spacious wardrobe provides ample storage for clothing. Tasteful vinyl's cover the walls, custom fabrics cover the bed. Fabric curtains are sure to keep the light out on those late mornings in bed.

- 13" Sole LCD TV with DVD player
- Carpet - tufted cut pile, 65 oz. crush resistant 100% nylon
- (2) berth step-ups, carpeted
- Cherry wood countertops
- Decor matched curtains
- Entrance door - 2 panel solid cherry wood frame with sapele pommele panels exterior, cherry wood panels interior, secures open and closed, stainless steel hardware
- Hanging locker - 3/4 height, cedar lined, automatic light, shared with third stateroom
- Hanging locker - 1/2 height, carpeted with 3 side shelves and automatic light
- (2) 110V GFCI outlets
- (2) Halogen lights, overhead, recessed
- (4) Halogen lights over surround shelves, recessed
- Mirrored head board
- Overhead hatch, translucent, lockable, with inside screen
- (4) portlights with screens
- Private guest head access
- Rocker light switches
- Sheet set
- (2) stereo speakers with volume control
- Storage beneath mattress
- (2) storage drawers
- Surround shelves - cherry wood with sea rail
- Telephone connector
- (2) Halogen lights, overhead, recessed and directable
- Raritan ice maker
- Sun pad area aft

VIP En-Suite Head

Easy access on the port side, guests have a private entry into the VIP En-Suite Head. Modern and richly appointed the expansive VIP En-Suite Head features a stall shower, sink, and vanity. Excellent storage is available in the cabinets below. Also used as the Day Head and the Guest Stateroom Head.

- Vacuum Flush Head
- Exhaust Fan
- Mirrored Door Medicine Cabinet
- Towel Ring
- (2) Cabinets
- Separate Showers
- Corian Counter Tops

Guest Stateroom

Accessed through the guest companion way on the port side. This comfortable and spacious stateroom has a two twin over-under berths. The room is tastefully decorated with state of the art amenities.

- Berths - twin, upper and lower bunks
- Berth end table - sapele pommele inlay with cherry wood trim and sea rail, cabinet below with 2 shelves
- Entrance door - 2 panel, solid cherry wood frame with sapele pommele panels, exterior, cherry wood panels interior, secures open and closed, stainless steel hardware
- Curtains, decor matched
- Hanging locker
- Lights (2) halogen, sconces, directable for reading
- Lights (3) halogen, overhead, recessed
- Portlight with screen
- Rocker light switch
- Sheet sets (2)
- Storage drawer, beneath lower bunk
- Telephone connector
- Carpet - tufted cut pile, 65 Oz. crush resistant 100% nylon
- 110V outlet - GFCI protected

Flybridge

The flybridge of the yacht is the perfect place to take the sun and sea. Design across the board for the flybridge helm station. All the instruments are laid out clearly and intuitively in an

optimized space to offer the maximum comfort while underway. An oasis of sunpad cushions to lounge on and a semicircular sofa to enjoy your life at sea in total relaxation.

- No Flybridge carpet
- MarineAir bridge air conditioning
- DC distribution panel, bridge 12V systems
- Electronics arch, custom aluminum with acrylic polyurethane surface coating & UV protection
- Electronics arch access plates (3)
- Entrance door, weather tight, secures closed
- Hand rail, stainless steel, next to pilothouse entrance door
- Lights (3) courtesy, recessed
- Lights (2) LED, overhead, recessed
- Lounge, double wide, faux leather, starboard side with storage beneath
- Electronics installation space
- Adapter, 12V
- Beverage holder, recessed, integral
- Dash, fiberglass with faux burled walnut accents
- Helm seat, double wide, faux leather, double stitching with taped seams, electrically adjustable, with storage and locker beneath
- Tilt steering wheel
- Lounge, U-shaped, faux leather, port side, accommodates 7 adults, with storage beneath
- Dinette table
- Safety gates (2) between bridge and aft bridge extension, and at top of bridge stairway
- Self-draining walk surface
- Storage lockers (2)
- Wet bar, self draining with integral sink, removable sink divider, brass/chrome designer sink fixture, preparation surface, stainless steel 5 bottle holder, storage cabinet beneath
- Windshield, tinted, wraparound, stainless steel frame
- Gauges:
 - Helm Station equipped with electronics in the lower helm
 - Rudder angle
 - Fuel (multi gauge)
 - Digital tachometer with hour meter (1 per engine)
 - Oil pressure
 - Engine temperature
 - Engine battery voltage (multi gauge, 1 per engine)

Bow and Deck Equipment

Walk around decks and a large bow section makes moving around the decks a breeze. There is a lovely lounge area for guests with sun pad on the bow to take in the sun or stars. Also a great get away for privacy and relaxation, especially while at anchor.

- 600lb Davit and chocks added to the flybridge boat deck
- Bow lockers (2) in deck, self draining for fender storage and anchor chain locker access
- Cleats (2), 12" stainless steel, bolted through aluminum backing plate, with stainless steel fair leads
- Cleat, 12" stainless steel, for anchor line, bolted through aluminum backing plate
- Deck toe rail
- Sunpad
- Bow rail, 1.25" O.D., lineal buffed, welded stainless steel with additional intermediate rail amidships and forward
- Bow rail stanchions, double welded (inside and outside), stainless steel anchored to aluminum backing plates laminated into deck
- Cleats (4) 10" spring, stainless steel, bolted through aluminum backing plate
- Deck toe rail
- Grab rail, stainless steel, over cabin windows, running length of cabin and above windshields
- Pilothouse door, sliding, tinted window, on starboard side deck
- Rail gate, starboard side
- Rub rail molding, heavy duty, stainless steel insert

Engine Room

- Volvo D12 EVC 675hp - 761 appx hours
- ZF Marine Transmission
- ZF Marine Props 29x32
- Air conditioning, split system in cabin, 4 zone, 72,000 BTU
- Bow thruster
- Cutlass bearings
- Dripless shaft logs with spare seals
- Engine synchronizer
- Exhaust mufflers, engines, generator
- Fresh water cooling, engines
- Fuel Tanks, welded, baffled 5052 aluminum
- Hydraulic steering
- Shafts, aquamet
- Rudders, 421 manganese bronze
- Seawater strainers
- Struts 421 manganese bronze
- Trim tabs, stainless steel, hydraulic
- Engine room camera
- Access ladder, stainless steel, nonskid rung surfaces, hinged
- Bilges coated with white, low-VOC gelcoat
- Bulkheads laminated to hull sides and stringers
- Insulation, acoustical and thermal, vinyl vapor barrier

- Lights (6) overhead, fluorescent, controls in cockpit
- Catwalk, diamond plate aluminum

Electrical

- Kohler 22kw Generator - 740 appx hours
- Two Charles Isolation transformers with isoboost
- 4 under water lights
- Dual shore service
- Dual cablemaster
- AC/DC distribution panels with magnetic circuit breakers and integral generator and bilge blower controls, AC and DC voltmeters, AC and DC ammeters
- Batteries (7), deep cycle, marine (12V)
- Battery chargers (3), electronic, AC DC converters
- Bow thruster
- Forward shore power connector
- External connectors, CATV, telephone
- Ground fault circuit interrupt (GFCI) protection, all 110V outlets
- Inverter
- Wiring system, tinned copper strand wire, harnessed , color coded labeled, meets or exceeds ABYC standards

EXCLUSIONS

Owners personal effects. A list will be supplied upon request.

Remarks

Don't miss this amazing opportunity to own this METICULOUSLY MAINTAINED AND INCREDIBLY UPGRADED 56 Carver. She is a beautiful custom ensemble that has been unbelievably upgraded. If you are in the market for a luxurious custom Carver Motor Yacht, don't miss this rare opportunity to own this beautiful 56'! She is easy to see 7 days a week. Schedule your appointment today.

Исключения

При продаже яхты исключаются личные вещи владельца.

Отказ от ответственности

Компания предоставляет описание судна или яхты добросовестно, но не может гарантировать точность этой информации, а также не ручается за техническое состояние. Покупатель должен проинструктировать своих агентов или оценщиков исследовать представленную информацию более подробно, по собственному желанию. Продажа судна или яхты, изменение цены или снятие с продажи будет происходить без предварительного уведомления.

ФОТОГРАФИИ

Profile



Profile



Profile



Salon



Salon



Salon Seating



Salon Seating



Galley



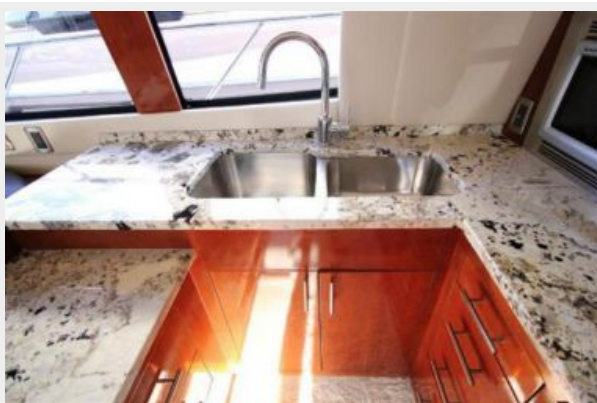
Galley



Galley



Galley



Helm



Helm



Helm



Helm



Helm



Helm



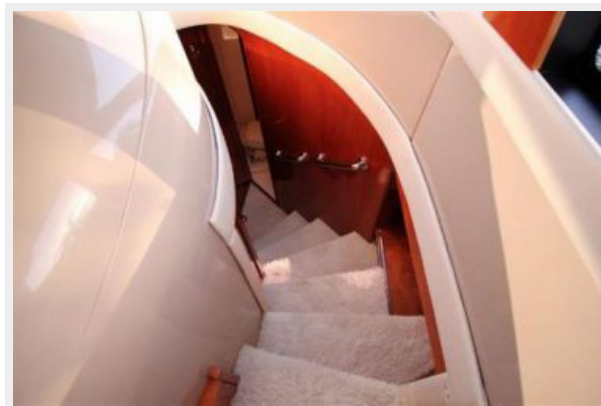
Helm Electronics



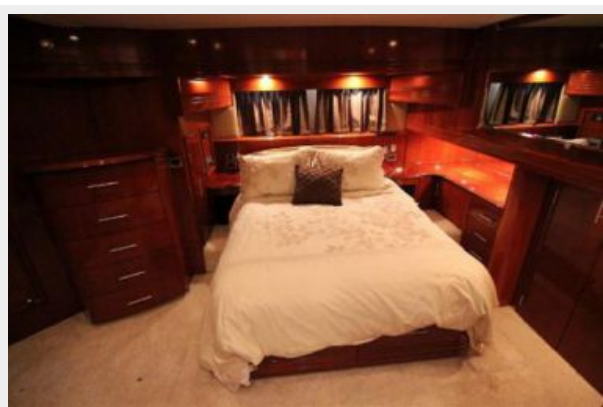
Helm Electronics



Stairs



Master



Master



Master Head



Washer & Dryer



VIP Head



VIP



Stateroom



Flybridge



Flybridge



Flybridge Helm



Flybridge Helm



Grill



Flybridge Seating



Aft



Bow



Aft



Aft Seating



Flybridge Wide



Media



КОНТАКТЫ

Андрей Шестаков (Andrey Shestakov) – ведущий яхтенный брокер отдела продаж яхт и судов компании Shestakov Yacht Sales Inc. Официальный представитель Shestakov Yacht Sales Inc. для русскоговорящих клиентов в центральном офисе компании в Майами/Форт Лодердейл/Флорида/США.

Контактная информация

Email: andrey@shestakovyachtsales.com

Web: shestakovyachtsales.com

Телефоны

Краснодарский край: **+7(918)465-66-44**

США, Майами, Флорида: **+1(954)274-4435**

Время работы

Понедельник – Суббота: **9:00 - 21:00**
EDT

Воскресенье: **Закрито**

Адрес



Harbour Towne Marina, 850 NE 3rd St,
STE 213, Dania, FL 33004