

CAPTAIN'S CHOICE — HATTERAS



Судостроитель: HATTERAS

Год постройки: 1985

Модель: Моторная яхта

Цена: **ЦЕНА ЯХТЫ ПО ЗАПРОСУ**

Местонахождение: Canada

Длина общая: 58' 9" (17.91m)

Ширина: 18' 2" (5.54m)

Мин. осадка: 4' 10" (1.47m)

Макс. осадка: 5' 0" (1.52m)

Крейс. скорость: 15 Kts. (17 MPH)

Макс. скорость: 18 Kts. (21 MPH)

Купить **CAPTAIN'S CHOICE — HATTERAS** а также выбрать подходящую вам яхту из нашего каталога яхт вам поможет опытный яхтенный брокер Андрей Шестаков. На сегодняшний день компания **Shestakov Yacht Sales Inc.** имеет большое количество яхт в собственном списке продаж, а также тесно сотрудничает со всеми крупными яхтенными производителями по всему миру.

Для того чтобы купить яхту **CAPTAIN'S CHOICE — HATTERAS** а также проконсультироваться по любому вопросу связанному с покупкой, продажей, чартером яхт позвоните по телефону **+7(918)465-66-44**.

ОГЛАВЛЕНИЕ

| | |
|-------------------------------|----|
| ОГЛАВЛЕНИЕ | 2 |
| ХАРАКТЕРИСТИКИ | 5 |
| Основная информация | 5 |
| Размеры | 5 |
| Скорость, вместимость и масса | 5 |
| Размещение | 6 |
| Корпус и палуба | 6 |
| Информация о двигателе | 6 |
| ПОДРОБНОЕ ОПИСАНИЕ | 7 |
| Vessel Walkthrough | 7 |
| Pilothouse Equipment | 7 |
| Salon | 8 |
| Galley | 8 |
| Forward Stateroom | 8 |
| Forward Guest Head | 9 |
| Companionway | 9 |
| Mid Guest Cabin | 9 |
| Mid Guest Head | 9 |
| Master Cabin | 10 |
| Master Head | 10 |
| Foredeck | 10 |
| Aft Deck | 10 |
| Flybridge | 11 |
| Engine Room | 11 |
| Electrical | 11 |
| Remarks | 11 |
| Exclusions | 12 |
| Disclaimer | 12 |

| | |
|------------------------------|----|
| Исключения | 12 |
| Отказ от ответственности | 12 |
| ФОТОГРАФИИ | 13 |
| Pilothouse | 13 |
| Helm | 13 |
| Garmin GPS/Radar | 13 |
| Lower Helm Seat | 13 |
| Salon TV | 13 |
| Salon Looking Forward | 13 |
| Salon to Port | 14 |
| Dinette | 14 |
| Galley | 14 |
| Forward Cabin | 14 |
| Forward Head | 14 |
| Companionway | 14 |
| Companionway Laundry | 15 |
| Companionway Looking Forward | 15 |
| Mid Guest Cabin Head | 15 |
| Mid Guest Cabin | 15 |
| Master Cabin Looking Aft | 16 |
| Master Cabin to Port | 16 |
| Master Head | 16 |
| Master Cabin to Starboard | 16 |
| Foredeck | 16 |
| Aft Deck | 16 |
| Aft Deck Bar | 17 |
| Aft Deck Seating | 17 |
| Helm | 17 |
| Helm Chairs | 17 |

| | |
|-----------------------|----|
| Flybridge | 17 |
| Starboard Engine | 17 |
| Port Engine | 18 |
| Port Engine Room | 18 |
| Gen/Room AC Units | 18 |
| Stern | 18 |
| Stabilizers | 18 |
| Bow Thruster | 18 |
| Stern | 19 |
| Alternate Profile | 19 |
| Alternate Profile | 19 |
| Alternate Profile | 19 |
| КОНТАКТЫ | 20 |
| Контактная информация | 20 |
| Телефоны | 20 |
| Время работы | 20 |
| Адрес | 20 |

ХАРАКТЕРИСТИКИ

Основная информация

Тип судна: Моторная яхта

Подкатегория: Flushdeck

Модельный год: 1985

Год постройки: 1985

Страна: Canada

Верх: Bimini Top

Открытая палуба мостика: Да

Размеры

Длина общая: 58' 9" (17.91m)

Длина по ватерлинии: 53' 9" (16.38m)

Длина палубы: 58' 0" (17.68m)

Ширина: 18' 2" (5.54m)

Мин. осадка: 4' 10" (1.47m)

Макс. осадка: 5' 0" (1.52m)

Трапы: 18' 10" (5.74m)

Длина привального бруса: 58' 0"
(17.68m)

Скорость, вместимость и масса

Крейс. скорость: 15 Kts. (17 MPH)

Крейсерская скорость поворота: 2000
Kts.

Макс. скорость: 18 Kts. (21 MPH)

Макс. скорость поворота: 2300 Kts.

Водоизмещение: 79000 Pounds

Чистый вес: 41 Pounds

Вместимость воды: 350 Gallons

Вместимость сточного бака: 210 Gallons

Объем топливного бака: 1030 Gallons

Размещение

Всего кают: 3

Всего коек: 5

Спальные места: 6

Всего ком. состава: 3

Корпус и палуба

Материал корпуса: Fiberglass

Материал палубы: Fiberglass

Комплектация корпуса: Modified V-Hull

Отделка корпуса: Fiberglass

Дизайнер корпуса: J. Hargrave

Дизайнер экстерьера: Hatteras Yachts

Дизайнер интерьера: Hatteras Yachts

Информация о двигателе

Двигатели: 2

Производитель: Detroit Diesel/Allison

Модель: 8V92TI

Тип двигателя: Inboard

Тип топлива: Diesel

ПОДРОБНОЕ ОПИСАНИЕ

Vessel Walkthrough

Boarding is via the port and starboard Pilothouse gates where you can walk aft to the Aft Deck wing door or into the Pilothouse.

Starting forward is a large Helm Area with a double bench seat storage below, a centerline helm with electronics above and below, port and starboard side deck doors and additional chart drawers and storage below.

Next aft and open to the Pilothouse is the Salon with a TV cabinet to port followed by a three person upholstered sofa with tables fore and aft, each with a table lamp. To starboard are two leather chairs with an end table between.

Next aft through a hinged door is the very spacious Aft Deck with hard side sliding windows, wing doors and a clear vinyl curtain aft above the rail.

Forward is a full bar with ladder access to the Flybridge. Aft is seating and a table.

Starting below from the Pilothouse, the Galley is four steps down with a booth dinette to starboard with the Galley including full size appliances to port.

Forward and down three stairs is the Forward Guest Cabin with two oversize upper lower bunks to starboard with a full size hanging locker, drawer storage and access to the en suite Head with stall shower, vanity and marine head.

Going aft from the Galley a Centerline Companionway leads past a Laundry Center on the starboard side followed by a Guest Head with a stall shower, vanity and marine toilet. To port is a Cabin with twin lower berths, a two drawer nightstand between a full size hanging locker and portholes on the outboard side.

Next aft is the private Master Suite with a king size centerline berth, an L shaped settee to starboard and a bank of drawers to port. Forward to port is a large walk in closet. Forward to starboard is a Head with a stall shower vanity and a marine toilet.

Pilothouse Equipment

All the way forward on the main deck is the Pilothouse open to the Salon. Unlike many Euro Cruisers this station offers excellent 360 degree visibility.

Stainless steel Destroyer wheel Hynautic hydraulic clutch & throttle controls 6" Danforth chrome binnacle magnetic compass Full analog engine gauges (2) Standard Horizon VHF radios Simrad

AP 20 autopilot Signet wind speed indicator Intercom Furuno FCV 667 36 mile radar B & G digital speed indicator B & G digital depth sounder Garmin 740 plotter with 36 mile radar Naiad stabilizer controls Security system with motion detector AC shore/gen switching panels AC main systems circuit breaker Solderberg chart light (3) Windshield wiper controls Horn Windlass controls Bilge pump controls with indicator lights (5) Teak drawers Fold down footrest for double helm seat Teak parquet sole DC lighting overhead Port & starboard sliding wing doors Systems monitor with audio/visual alarms for oil pressure, water temp, bilge level, AC power, fire, exhaust temp and transmission temp Emergency engine stops Engine Room blower controls Trim tab controls

Salon

The Salon has large windows (after two open) port, starboard and aft. Drapes with a valance above cover the windows.

To starboard are two leather chairs with an open end table and table lamp above. An Oriental rug is centered on the Salon carpeting. To port is a three person upholstered sofa with tables fore and aft each with a table lamp.

All the way forward is a TV table with an LCD TV. Hidden from view is a Panasonic DVD player and stereo.

SMX digital controls deliver air/heat.

Galley

To starboard is a newly upholstered dinette with a new wood tabletop. Windows with drapes to both port and starboard offer great ambient lighting.

Equipment includes: Newer Frigidaire double door refrigerator/freezer Sharp Carousel microwave oven Stainless steel sink Kenmore garbage disposal Maytag dishwasher Modern Maid eye level oven w/exhaust vent Modern Maid stainless steel cook top New Galley floor Overhead AC - DC lighting SMX air conditioning/heat controls (12) Mica cabinet doors (4) Sliding door cabinets (3) Drawers (3) Fluorescent counter lights (2) Stereo speakers

Forward Stateroom

Down two steps from the Galley is the Forward Cabin with two oversize bunks to starboard. Two large storage drawers are under the lower berth. Each berth has a reading light. Access to the divided rope chain locker is forward.

Next aft to port are cabinets and chest high countertops with a porthole and drapes above. Next

aft is access to the en suite Head. To starboard is a full size hanging locker. Also in the cabin are SMX AC heat controls, an LCD TV and a carpeted sole with access to the newly installed bow thruster.

Forward Guest Head

To port within the cabin is a mica vanity with two storage cabinets below a china sink above, large mirrored medicine cabinet above and a stall shower with a bi fold tempered glass door, a handheld or wall mountable fixture, a light and an exhaust fan. The toilet is an electric Galley Maid model.

Companionway

Going aft from the Galley and down three steps is the Centerline Companionway with a newer Whirlpool dryer to starboard behind a teak door. The Companionway continues between the Guest Head and Mid Guest Cabin, then between the port and starboard Engine Rooms terminating at the entrance to the Master Cabin.

Mid Guest Cabin

On the portside are twin lower berths separated by a two drawer teak nightstand with a table lamp above. Each berth has an upholstered headboard with sliding cabinet door storage in the soffit above.

Additional custom storage is above the inboard berth.

Above the outboard berth are two opening portholes with drapes. At the foot of the outboard is a full size auto lit hanging locker. Also in the Mid Guest Cabin is an LCD TV and an SMX AC controller.

Mid Guest Head

Opposite to starboard is a Guest Head with a mica vanity with two drawers below, a china sink and two large sliding mirror panels serving as a medicine cabinet. Forward is a stall shower with a tempered glass bi fold door, a seat, porthole, light, fan and a handheld or wall mountable fixture.

The toilet is a Galley Maid electric model.

Master Cabin

All the way aft and just slightly to port is a custom king size berth on a pedestal platform. To starboard is an L shaped settee followed by a TV cabinet with LCD TV and the en suite Head going forward.

On the portside of the cabin is a nightstand and a bank of six drawers with storage below. Two portholes port and two starboard plus two large portholes as escape hatches aft are all covered by full drapes.

Also in this cabin is a carpeted sole, a very large walk in cedar lined auto lit locker to port and stereo speakers.

Master Head

Within the cabin to starboard is the ample Master Cabin Head with a mica vanity, two drawers, china sink and large sliding mirrored panels as a medicine cabinet. The stall shower has a tempered glass bi fold door, a light, a porthole and wall mounted or handheld fixture. The toilet is a Galley Maid electric model.

Foredeck

Fiberglass nonskid decks Hatteras fiberglass bow pulpit 60 Lb. Danforth anchor w/all chain rode (250') Galley Maid chain windlass Up & down foot switches for windlass (2) Foredeck dunnage boxes Marquipt 7 step Tide Ride boarding ladder Double handrails for Marquipt Molded bow seat w/removable cushions & cover Stainless steel bow rail w/varnished teak Rail aft of second stanchion Rayline chrome remote spotlight (3) Windshield wipers/washers Windshield cover International Navigation lights Rail breaks at Pilothouse doors Weatherboards aft of rail breaks Dual spring line cleats Forward deck hatch into Forward Cabin Overhead lights at Pilothouse doors Grey painted boot top & sheer stripe Fender travelers on aft hull sides port & starboard Dual trumpet horn Joe rail courtesy lights, (3) port, (3) starboard Dockside water connection port & starboard Telephone/TV inlet port & starboard

Aft Deck

Fiberglass nonskid sole Removable carpet (2) Hinged wing doors Center rail break w/ladder to platform Fiberglass swim platform w/hinged swim ladder Wet bar w/icemaker Storage cabinets below bar Loveseat & end table Hard glass sliding side panels Rollup curtains aft AC & DC overhead lighting 7 Step teak & stainless steel ladder to Flybridge Hinged deck hatch to Bridge Deck Stereo speakers

Flybridge

Fiberglass nonskid sole Stainless steel railings w/Micarta weatherboards Aluminum radar arch (hinged) New hydraulic 1200 lb. tender davit Bimini top (new) 40 mil. & 60 mil. Bimini top enclosure curtains Helm cover Venturi windshield w/stainless steel handrail Intellian Sat TV system New broadcast TV antenna Centerline helm Horizon Intrepid VHF radio Air horns L shaped starboard bench seating w/cover & storage below Full analog engine gauges Windlass controls Start/stop switches Stainless steel Destroyer wheel Danforth Constellation magnetic compass in chrome binnacle Simrad AP 20 autopilot Hydraulic clutch & throttle controls Glendinning engine synchronizers Trim tab controls Blower switches w/indicator lights Furuno LCD radar Naiad stabilizer controls (3) Pompanette helm chairs with covers Stereo speakers Recessed light on radar arch Rayline searchlight controls Garmin GPS/plotter Northstar 941 GPS/plotter

Engine Room

900 hours on 8V92's SMOH 650 HP Newer exhaust risers (2006) incl. blanket Naiad 254 stabilizer system New 15 HP Side Power bow thruster (5) Marine Air air conditioning compressors (3 new 2007, 1 new in 2010) Fuel shutoff valves Fuel priming pumps Airsep crankcase ventilation system Oil change pump Freshwater cooling Racor 1000 fuel filters for each engine 120V Fluorescent lighting in Engine Room 32V Incandescent lighting in Engine Room (2) Spare props Glendinning synchronizer Engine Room blowers Freshwater spigot w/hose Engine driven air compressor Allison MH20L transmissions w/2:1 reduction ratio (4) Auto bilge pumps (3) Shower sumps 75 Lb. CO2 fire suppression system in Engine Room 35 Lb. CO2 fire suppression system in Generator Room 4 Blade 24" x 26" main propeller 2.5" Stainless steel prop shafts 40 Gallon hot water heater Y valves for heads

Electrical

12/32 Volt DC electrical systems 120/240 Volt AC electrical systems 2007 Northern Lights 20 KW generator La March A-4030 32 V Constavolt (4) 8 Volt batteries for engine starting (1) 12 Volt generator battery New 3200 watt Outback converter w/mate control (2) 50 Amp shore cord connections port & starboard GFCI outlets in all wet areas Breaker protected circuit panels Racor fuel filter for generator (2) Power Former 50 amp isolation transformer (5) Battery cutoff switches Guest Charger Pro 12 volt battery charger

Remarks

Aptly named this 58' Hatteras was purchased by a professional husband and wife captain team after an exhaustive search for the perfect boat several years ago.

Full time employment on a larger yacht and a new home ashore has brought about putting

CAPTAIN'S CHOICE on the market. Stored undercover in "freshwater" till sold, this 58' Hatteras has stabilizers and a newer bow thruster plus an overall condition that makes her stand out from her sisterships.

Exclusions

While every effort was made to list all pertinent included equipment aboard CAPTAIN'S CHOICE, there are some personal belongings aboard. Prospective purchasers should assume any item not specifically mentioned herein will not convey at closing. Named exclusions are owner's tools and personal belongings.

Disclaimer

The Company offers the details of this vessel in good faith but cannot guarantee or warrant the accuracy of this information nor warrant the condition of the vessel. A buyer should instruct his agents, or his surveyors, to investigate such details as the buyer desires validated. This vessel is offered subject to prior sale, price change, or withdrawal without notice.

Исключения

При продаже яхты исключаются личные вещи владельца.

Отказ от ответственности

Компания предоставляет описание судна или яхты добросовестно, но не может гарантировать точность этой информации, а также не ручается за техническое состояние. Покупатель должен проинструктировать своих агентов или оценщиков исследовать представленную информацию более подробно, по собственному желанию. Продажа судна или яхты, изменение цены или снятие с продажи будет происходить без предварительного уведомления.

ФОТОГРАФИИ

Pilothouse



Helm



Garmin GPS/Radar



Lower Helm Seat



Salon TV



Salon Looking Forward



Salon to Port



Dinette



Galley



Forward Cabin



Forward Head



Companionway



Companionway Laundry



Companionway Looking Forward



Mid Guest Cabin



Mid Guest Cabin Head



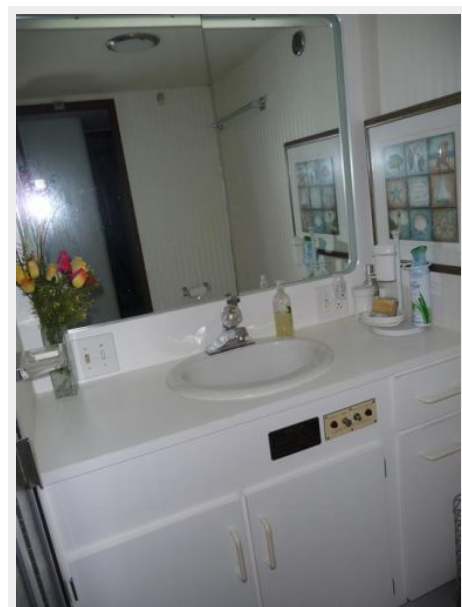
Master Cabin Looking Aft



Master Cabin to Port



Master Head



Master Cabin to Starboard



Foredeck



Aft Deck



Aft Deck Bar



Aft Deck Seating



Helm



Helm Chairs



Flybridge



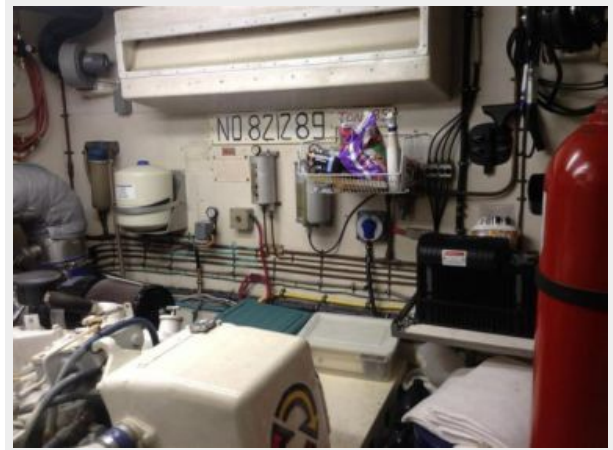
Starboard Engine



Port Engine



Port Engine Room



Gen/Room AC Units



Stern



Stabilizers



Bow Thruster



Stern



Alternate Profile



Alternate Profile



Alternate Profile



КОНТАКТЫ

Андрей Шестаков (Andrey Shestakov) – ведущий яхтенный брокер отдела продаж яхт и судов компании Shestakov Yacht Sales Inc. Официальный представитель Shestakov Yacht Sales Inc. для русскоговорящих клиентов в центральном офисе компании в Майами/Форт Лодердейл/Флорида/США.

Контактная информация

Email: andrey@shestakovyachtsales.com

Web: shestakovyachtsales.com

Телефоны

Краснодарский край: **+7(918)465-66-44**

США, Майами, Флорида: **+1(954)274-4435**

Время работы

Понедельник – Суббота: **9:00 - 21:00**
EDT

Воскресенье: **Закрито**

Адрес



Harbour Towne Marina, 850 NE 3rd St,
STE 213, Dania, FL 33004