

## GRAFIN IV — PREMIER YACHTS



**Судостроитель:** [PREMIER YACHTS](#)

**Год постройки:** 1994

**Модель:** Cutter

**Цена:** ЦЕНА ЯХТЫ ПО ЗАПРОСУ

**Местонахождение:** United States

**Длина общая:** 54' 6" (16.61m)

**Ширина:** 15' 0" (4.57m)

**Мин. осадка:** 7' 0" (2.13m)

**Крейс. скорость:** 8 Kts. (9 MPH)

Купить **GRAFIN IV — PREMIER YACHTS** а также выбрать подходящую вам яхту из нашего каталога яхт вам поможет опытный яхтенный брокер Андрей Шестаков. На сегодняшний день компания **Shestakov Yacht Sales Inc.** имеет большое количество яхт в собственном списке продаж, а также тесно сотрудничает со всеми крупными яхтенными производителями по всему миру.

Для того чтобы купить яхту **GRAFIN IV — PREMIER YACHTS** а также проконсультироваться по любому вопросу связанному с покупкой, продажей, чартером яхт позвоните по телефону **+7(918)465-66-44**.

# ОГЛАВЛЕНИЕ

ОГЛАВЛЕНИЕ	2
ХАРАКТЕРИСТИКИ	4
Обзор	4
Основная информация	4
Размеры	4
Скорость, вместимость и масса	4
Размещение	5
Корпус и палуба	5
Информация о двигателе	5
ПОДРОБНОЕ ОПИСАНИЕ	6
Accommodations	6
Electronics	6
General Equipment	6
Safety	6
Machinery	7
Electric	7
Rigging	7
Sails	7
Winches	7
Remarks	7
Исключения	8
Отказ от ответственности	8
ФОТОГРАФИИ	9
Brochure Photo	9
VIP Berth	9
VIP Head	9
Head Overview	9
Head	10

VIP Shower	10
Salon	10
Salon	10
Nav Table	11
Galley	11
Washer	11
Floor	11
Interior	12
Third Cabin	12
Head Two	12
Aft Cabin	12
Aft Cabin	13
Generator	13
Engine	13
Cockpit	13
Deck	13
Dinghy	13
Cowl	14
Mast	14
Stern	14
КОНТАКТЫ	15
Контактная информация	15
Телефоны	15
Время работы	15
Адрес	15

# ХАРАКТЕРИСТИКИ

## Обзор

This yacht is in excellent condition and ready for cruising. The Nordseil is such a beautiful yacht and heads turn wherever she sails. Although her styling is from a period nearly fifty years ago she has like all of Bill Dixon's yachts considerable space below decks. Her sailing performance is excellent and she is the ocean cruiser for the discerning owners who like everything that was good about design in the "old days" but with every modern convenience built in. The yachtsmen or women looking for the unique mix of fast cruising and refined living all in a classic design and with Premier build quality need look no further! Boat International quoted: "For once the brochure comes close and the Nordseil is a gentlemen's yacht of extraordinary quality, construction and style.

## Основная информация

<b>Тип судна:</b> Cutter	<b>Подкатегория:</b> Крейсерская яхта
<b>Модельный год:</b> 1995	<b>Год постройки:</b> 1994
<b>Страна:</b> United States	<b>Номер регистрации в береговой охране:</b> Germany

## Размеры

<b>Длина общая:</b> 54' 6" (16.61m)	<b>Ширина:</b> 15' 0" (4.57m)
<b>Мин. осадка:</b> 7' 0" (2.13m)	

## Скорость, вместимость и масса

<b>Крейс. скорость:</b> 8 Kts. (9 MPH)	<b>Водоизмещение:</b> 52910.94288 Pounds
<b>Вместимость воды:</b> 300 Gallons	<b>Вместимость сточного бака:</b> 21 Gallons
<b>Объем топливного бака:</b> 180 Gallons	

## Размещение

---

Всего кают: 3

## Корпус и палуба

---

Материал корпуса: Steel

Материал палубы: Teak

Цвет корпуса: Navy Blue

Дизайнер корпуса: Bill Dixon

## Информация о двигателе

---

Двигатели: 1

Производитель: Yanmar

Тип топлива: Diesel

# ПОДРОБНОЕ ОПИСАНИЕ

---

## Accommodations

---

Grafin IV offers extremely comfortable accommodations for seven consisting of a large cabin aft with a double berth to port and sea berth to starboard just aft of the head area with new mattresses. The spacious galley area situated in the dog house is well ventilated and secure. She is fitted with a cooker, fridge and freezer, new Candy washer/dryer and a double stainless steel sink. She features a Wabasto warm water heater system with fans. To starboard and opposite of the galley is a complete navigation area with a full size chart table. There are three oblong opening ports either side at head height providing excellent ventilation for chef and navigator. Stepping down into the salon which is separated from the galley by partial bulkheads is the dining area with comfortable seating and a beautiful mahogany drop leaf table. Moving forward to port is a twin bunk cabin and opposite a second head area. Aft head compartment features a heated towel rail! A luxurious double guest (delete word guest) cabin is forward. The whole interior is solid mahogany and coated with a high gloss flawless varnish finish making a rich and cozy interior. No expense has been spared in the build and up keep of GRAFIN IV. She also has sensible and traditional features like a heated oil skin locker close to the companionway. All lighting has been changed to modern LED.

## Electronics

---

Raymarine Auto pilot with Gyro compass, Raymarine ST 60 instruments with cruising pack 3 plus multi-function repeater at the chart table along with two more display units, Autohelm ST 50 Nav center, EPIRB, Raymarine radar, Icom SSB IC-800, New Icom 07323, Lanmar auto link controller, Chart plotter Raymarine C80. A 15, NASA weather Navtex, Tri color masthead LED navigation lights, Router for internal WIFI

## General Equipment

---

Dinghy, Yamaha 3hp outboard with push pit stowage, Crane, Stainless steel Delta anchor 25 KG, Roena 40 KG, 70M chain and rope, Electric windlass, Stainless steel cowl vents, 8 cushions, Clock and barometer, 2 director stools, Cockpit table, Davits, Timage gang plank and boarding ladder, Radio and CD player, Switchable deck wash fresh and sea water with hose, 6 fans, Bimini-Spray hood, Deck chair for dining table, 6 electric Hella fans, Mattress of the highest quality which is made in Austria

## Safety

---

6 man life raft, Electric bilge pump, Deck life lines, Jonboy.

---

## Machinery

---

Yanmar 100 HP, 8 HP Celtic bow thruster, Maxprop, Rope cutter on shaft, pressurized hot and cold water, Wabasto warm water immersion heater

---

## Electric

---

24 Volt two-wire negative earth system, 240 volt ring main with plugs in all cabins, Mobitronic battery controller, Zeisse 8 (6.5kw) generator, Battery charger, 110 volt inverter

---

## Rigging

---

Cutter rig, Anodized and painted two spreader mast and boom by Proctor, Rod rigging, Spinnaker pole and gear, solid kicker, Hydraulic backstay adjuster, kicker and outhaul controls in cockpit, Head sail reefing, Stay sail reefing system

---

## Sails

---

Fully battened main 646.7 sq. ft. 2008, Genoa 862.9 sq. ft. 2004, Staysail 225.6 sq. ft. 2004, Cruising chute with spee squeezer, All sails by CO-Segel, Gennacker2003

---

## Winches

---

2 Lewmar 66ST electric primaries and main halyard winch in cockpit, 2 54ST, 1 48ST, 1 44ST, 1 electric 48ST on coach roof with Lewmar sheet stoppers

---

## Remarks

---

This yacht is in excellent condition and ready for cruising. The Nordseil is such a beautiful yacht and heads turn wherever she sails. Although her styling is from a period nearly fifty years ago she has like all of Bill Dixon's yachts considerable space below decks. Her sailing performance is excellent and she is the ocean cruiser for the discerning owners who like everything that was good about design in the "old days" but with every modern convenience built in. The yachtsmen or women looking for the unique mix of fast cruising and refined living all in a classic design and with Premier build quality need look no further! Boat International quoted: "For once the brochure comes close and the Nordseil is a gentlemen's yacht of extraordinary quality, construction and style. The yacht is amazingly quiet due to insulation in the hull to the waterline as well as the whole deck! The dodger is a true offshore design with room for a watch berth and a dry area in the foulest weather. The custom bimini is secure to the stanchions with solid stainless steel and an ergonomic design which is functional and stylish. Bill Dixon builds in high tensile 4mm steel with a superior fairing and paint. This makes Grafín IV a true offshore cruiser making her safe as

well as a performing well. Dixon's brief was to design the definitive range of blue water cruising yachts and Dridge's job was to match the finish he once achieved at Bowman. The interior is all mahogany with quality joinery and a flawless finish. The bilges are clean and proper as a yacht should be. You will be hard pressed to find a safer and more comfortable yacht at this price point! Recent upgrades of at least \$25,000.00 are reflected in the listing. She will be shipping to Europe right after the show don't miss this opportunity to have a perfect yacht in your able hands!

---

## Исключения

---

При продаже яхты исключаются личные вещи владельца.

---

## Отказ от ответственности

---

Компания предоставляет описание судна или яхты добросовестно, но не может гарантировать точность этой информации, а также не ручается за техническое состояние. Покупатель должен проинструктировать своих агентов или оценщиков исследовать представленную информацию более подробно, по собственному желанию. Продажа судна или яхты, изменение цены или снятие с продажи будет происходить без предварительного уведомления.



# ФОТОГРАФИИ

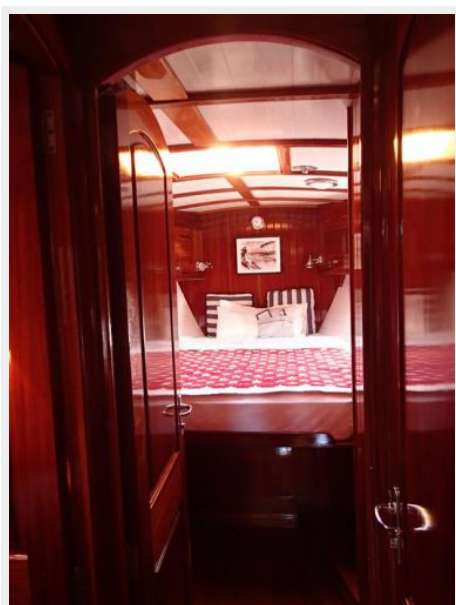
Brochure Photo



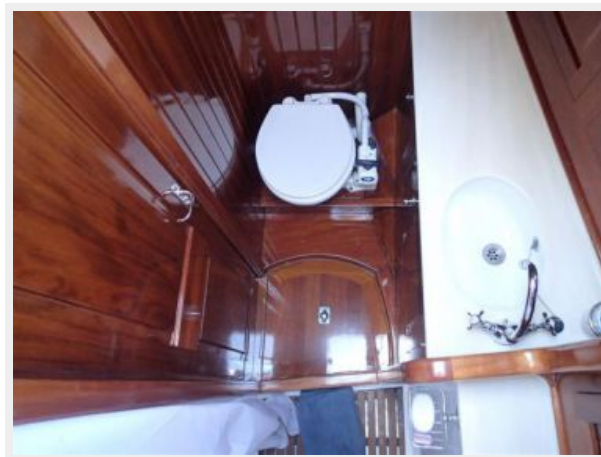
VIP Berth



VIP Head



Head Overview



Head



VIP Shower



Salon



Salon



**Galley**



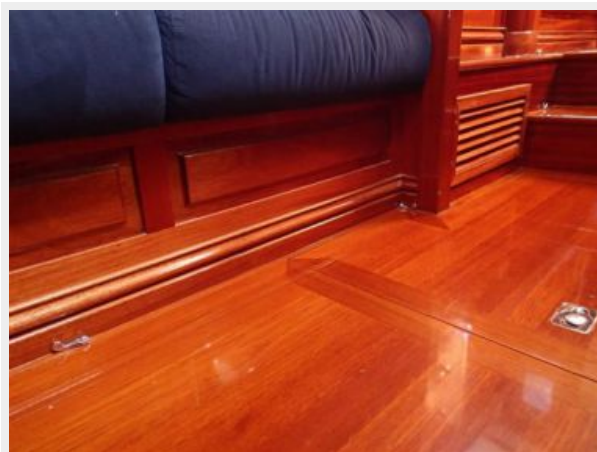
**Nav Table**



**Washer**



**Floor**





**Interior**



**Third Cabin**



**Head Two**



**Aft Cabin**



**Aft Cabin**



**Generator**



**Engine**



**Cockpit**



**Deck**



**Dinghy**

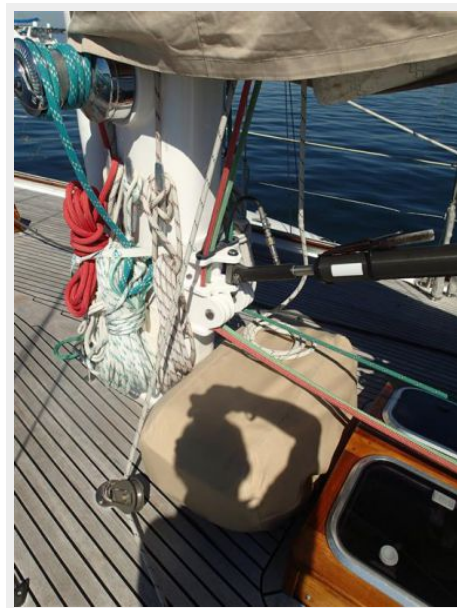




**Cowl**



**Mast**



**Stern**



# КОНТАКТЫ

---

Андрей Шестаков (Andrey Shestakov) – ведущий яхтенный брокер отдела продаж яхт и судов компании Shestakov Yacht Sales Inc. Официальный представитель Shestakov Yacht Sales Inc. для русскоговорящих клиентов в центральном офисе компании в Майами/Форт Лодердейл/Флорида/США.

## Контактная информация

---

Email: [andrey@shestakovyachtsales.com](mailto:andrey@shestakovyachtsales.com)

Web: [shestakovyachtsales.com](http://shestakovyachtsales.com)

## Телефоны

---

Краснодарский край: **+7(918)465-66-44**

США, Майами, Флорида: **+1(954)274-4435**

## Время работы

---

Понедельник – Суббота: **9:00 - 21:00**  
EDT

Воскресенье: **Закрито**

## Адрес

---



Harbour Towne Marina, 850 NE 3rd St,  
STE 213, Dania, FL 33004