

## 45M PICCHIOTTI — PERINI NAVI



**Builder:** [PERINI NAVI](#)

**Year Built:** 2016

**Model:** Mega Yacht

**Price:** PRICE ON APPLICATION

**Location:** Italy

**LOA:** 147' 8" (45.00m)

**Beam:** 28' 3" (8.60m)

**Max Draft:** 7' 3" (2.20m)

**Cruise Speed:** 12 Kts. (14 MPH)

**Max Speed:** 17 Kts. (20 MPH)

Our experienced yacht broker, Andrey Shestakov, will help you choose and buy a yacht that best suits your needs 45m Picchiotti — PERINI NAVI from our catalogue. Presently, at Shestakov Yacht Sales Inc., we have a wide variety of yachts available on our sale's list. We also work in close contact with all the big yacht manufacturers from all over the world.

If you would like to buy a yacht 45m Picchiotti — PERINI NAVI or would like help answering any questions concerning purchasing, selling or chartering a yacht, please call +1(954)274-4435

---

# TABLE OF CONTENTS

---

TABLE OF CONTENTS	2
SPECIFICATIONS	3
Basic Information	3
Dimensions	3
Speed, Capacities and Weight	3
Accommodations	3
Hull and Deck Information	4
Engine Information	4
DETAILED INFORMATION	5
Comments	5
Exclusions	5
Disclaimer	5
PHOTOS	6
Profile	6
Longitudinal	6
Bridge	6
Plan View	6
Lower Deck	6
Main Deck	6
Bilges	6
CONTACTS	7
Contact details	7
Telephones	7
Office hours	7
Address	7

---

# SPECIFICATIONS

---

## Basic Information

---

**Category:** Mega Yacht

**Model Year:** 2016

**Year Built:** 2016

**Country:** Italy

**Vessel Top:** 2357

**Fly Bridge:** Yes

**Cockpit:** Yes

## Dimensions

---

**LOA:** 147' 8" (45.00m)

**LWL:** 146' 0" (44.50m)

**Beam:** 28' 3" (8.60m)

**Max Draft:** 7' 3" (2.20m)

## Speed, Capacities and Weight

---

**Cruise Speed:** 12 Kts. (14 MPH)

**Cruise Speed Range:** 4400

**Max Speed:** 17 Kts. (20 MPH)

**Displacement:** 620000 Pounds

**Gross Tonnage:** 448 Pounds

**Water Capacity:** 2641.72052 Gallons

**Fuel Capacity:** 12680.258496 Gallons

## Accommodations

---

**Total Cabins:** 5

**Total Berths:** 12

**Sleeps:** 12

**Captain Cabin:** True

**Crew Cabin:** 5

**Crew Berths:** 10

---

## Hull and Deck Information

---

**Hull Material:** Aluminum

**Deck Material:** Teak

**Hull Designer:** Philippe Briand

**Exterior Designer:** Philippe Briand

**Interior Designer:** Perini Navi

---

## Engine Information

---

**Engines:** 2

**Manufacturer:** Caterpillar

**Model:** C32 Acert

**Engine Type:** Inboard

**Fuel Type:** Diesel

---

# DETAILED INFORMATION

---

## Comments

---

The new generation of Picchiotti motor yachts from the Vitruvius® series is born from the collaboration between Vitruvius Ltd, Philippe Briand and the Perini Navi Group.

The fundamental concepts behind the yacht project are expressed mainly in the hull and superstructure, in the arrangement of on-board spaces and in the abundance of tenders and toys for the exploration and discovery of the yacht's environment. These yachts have been designed for maximum efficiency and autonomous navigation. Picchiotti motor yachts share the attributes of the highly acclaimed Perini Navi sailing yachts for seagoing comfort, custom quality and long lasting value. The 45 meter Picchiotti has four potential layouts which includes 4 and 5 stateroom options as well as Owners suite on the main level or on the second deck. Like all yachts in the Picchiotti motor line the tenders are large and stored internally.

Currently three other Picchiotti motor yachts from the Vitruvius® series have been delivered from the Perini Navi Group's shipyards: the 50m "Exuma", the 55m "Galileo G" which has just completed her own maiden circumnavigation cruise, and the 73 m "Grace E" also from the Vitruvius® series delivered in September 2014.

## Exclusions

---

Owner's personal belongings.

## Disclaimer

---

The Company offers the details of this vessel or yacht in good faith but cannot guarantee or warrant the accuracy of this information nor warrant the condition of the vessel. A buyer should instruct his representatives, agents, or his surveyors, to investigate such details as the buyer desires validated. This vessel or yacht is offered subject to prior sale, price change, or withdrawal without notice.

# PHOTOS

**Profile**



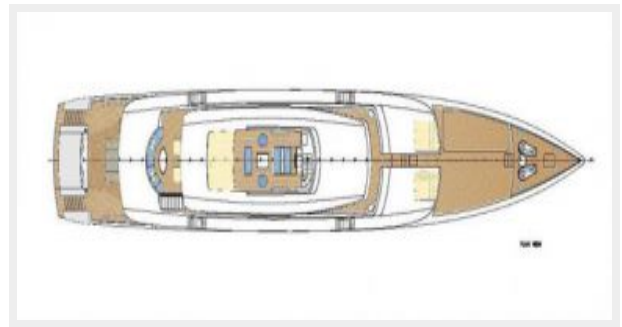
**Longitudinal**



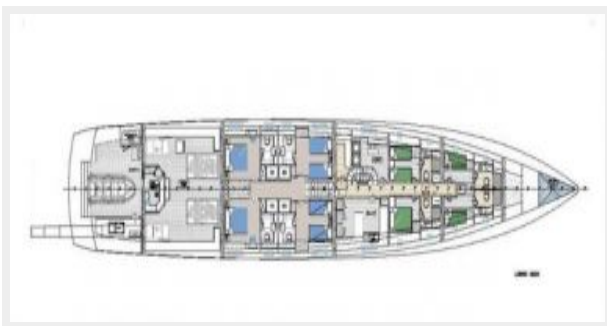
**Bridge**



**Plan View**



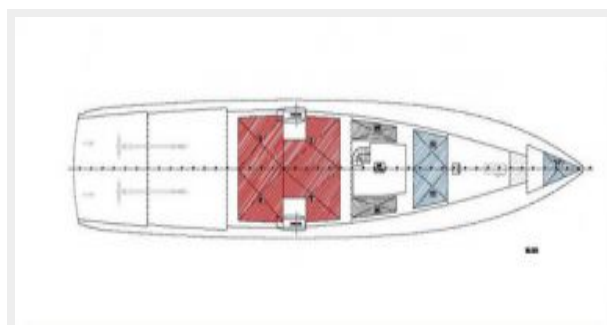
**Lower Deck**



**Main Deck**



**Bilges**



# CONTACTS

---

Andrey Shestakov, leading yacht broker of the sales department of Shestakov Yacht Sales Inc. Shestakov Yacht Sales Inc., the official representative of the Miami/Fort Lauderdale FL headquarters.

## Contact details

---

Email: [andrey@shestakovyachtsales.com](mailto:andrey@shestakovyachtsales.com)

Web: [shestakovyachtsales.com/en/](http://shestakovyachtsales.com/en/)

## Telephones

---

USA: +1(954)274-4435

## Office hours

---

Monday – Saturday: **9:00 - 21:00** EDT

Sunday: **closed**

## Address

---



Harbour Towne Marina, 850 NE 3rd St,  
STE 213, Dania, FL 33004