

## 48FT 1986 CHUNG HWA — CHUNG HWA



**Builder:** CHUNG HWA

**Year Built:** 1986

**Model:** Motor Yacht

**Price:** PRICE ON APPLICATION

**Location:** United States

**LOA:** 48' 0" (14.63m)

**Beam:** 15' 4" (4.67m)

**Max Draft:** 3' 10" (1.17m)

**Cruise Speed:** 12 Kts. (14 MPH)

**Max Speed:** 18 Kts. (21 MPH)

Our experienced yacht broker, Andrey Shestakov, will help you choose and buy a yacht that best suits your needs 48ft 1986 Chung Hwa — CHUNG HWA from our catalogue. Presently, at Shestakov Yacht Sales Inc., we have a wide variety of yachts available on our sale's list. We also work in close contact with all the big yacht manufacturers from all over the world.

If you would like to buy a yacht 48ft 1986 Chung Hwa — CHUNG HWA or would like help answering any questions concerning purchasing, selling or chartering a yacht, please call +1(954)274-4435

# TABLE OF CONTENTS

TABLE OF CONTENTS	2
SPECIFICATIONS	5
Basic Information	5
Dimensions	5
Speed, Capacities and Weight	5
Accommodations	5
Hull and Deck Information	5
Engine Information	6
DETAILED INFORMATION	7
Dimensions	7
Tankage	7
Engines	7
Generator	7
Electronics	7
Electrical	8
Accommodations	8
Galley	9
Extras	9
Exclusions	9
Disclaimer	9
PHOTOS	10
Fly bridge helm controls	10
Fly bridge w/seating	10
Fly bridge stairs	10
Aft seating on fly bridge	10
Aft Seating	11
Dingy	11
Aft deck wet bar/sink	11

Aft deck fridge	11
Strb. side	12
Port side	12
Salon TV & entertainment center	12
Salon seating	12
Salon chair	12
Steps from galley to salon	13
Breakfast nook	13
Galley with oven	13
Galley with double sink	13
Galley fridge	14
Galley	14
Stern bunks (top)	14
Stern bunks (bottom)	14
Stern Head w/sink	15
Stern head w/shower	15
Stern closet	15
Electric panel	15
Breaker box	16
2nd stateroom bunks (top)	16
2nd stateroom closet	16
2nd stateroom bunks (bottom)	16
2nd head with shower	17
Master stateroom bed	17
Master stateroom (port view)	17
Master stateroom (strb. view)	17
Master stateroom closet	18
Master shower	18
Master head	18

---

Master head w/sink	18
Engines	19
Engine room	19
Port engine	19
Engine tachometer (port)	19
Strb. engine	19
Engine tachometer (Strb)	19
Water heater	20
Engine room	20
Engine room	20
Engine room	20
Engine room	20
CONTACTS	21
Contact details	21
Telephones	21
Office hours	21
Address	21

---

# SPECIFICATIONS

---

## Basic Information

---

**Category:** Motor Yacht

**Model Year:** 1986

**Year Built:** 1986

**Country:** United States

## Dimensions

---

**LOA:** 48' 0" (14.63m)

**LWL:** 43' 6" (13.26m)

**Beam:** 15' 4" (4.67m)

**Max Draft:** 3' 10" (1.17m)

## Speed, Capacities and Weight

---

**Cruise Speed:** 12 Kts. (14 MPH)

**Cruise Speed RPM:** 1800 Kts.

**Max Speed:** 18 Kts. (21 MPH)

**Displacement:** 39000 Pounds

**Water Capacity:** 200 Gallons

**Holding Tank:** 40 Gallons

**Fuel Capacity:** 600 Gallons

## Accommodations

---

**Total Cabins:** 3

**Total Berths:** 5

**Total Heads:** 3

## Hull and Deck Information

---

**Hull Material:** Fiberglass

---

## Engine Information

---

**Engines:** 2

**Manufacturer:** Caterpillar

**Model:** 3208 TA

**Engine Type:** Inboard

**Fuel Type:** Diesel

---

# DETAILED INFORMATION

---

## Dimensions

---

LOA: 48 ft.

Beam: 15 ft. 4 inches

LWL: 43 ft. 6 inches

Max. Draft: 3 ft. 10 inches

## Tankage

---

Fresh water Tanks 1 (200 gallons)

Fuel Tanks (Alum): 4 (600 gallons total)

Holding Tank: 1 (40 gallons)

## Engines

---

- Twin Caterpillar 3208 TA's (3100 hrs)
- 375 HP
- Diesel, 600 gallon fuel tanks
- Cruising Speed: 14.5 kn
- Top Speed: 17.5 kn
- **11-12 knots at 1800 RPM has a 7 gph burn rate**
- Stabilizers added (\$55k addition)
- Set of replacement props come with boat

## Generator

---

15 kW Westerbeke Generator

## Electronics

---

- GPS 230
- Raytheon SL72 Radar Arch

- VHF radios (2)
- Datamarine depth sounder
- Danforth compass
- FM radio & CD player

---

## Electrical

---

- 12-volt ships system
- 110-volt shore power
- Heart Freedom 25 Invertor/battery charger
- 40-amp automatic battery charger
- Batteries w/parallel switch
- Heart Link 2000 interface
- (2) 8D engine start batteries (new in 2011), 1 generator start battery (new 2011)
- (3) 12-volt Rule Bilge pumps
- (1) Manual Bilge pump
- (2) Rule 12-volt sump pumps
- (3) Reverse cycle A/C units. Aft Cabin (12,000 BTU's, new in 2011)

---

## Accommodations

---

Comfortable accommodations in 3 private staterooms each with its own in suite head and shower. All staterooms have showers and vanities. 3 marine toilets with 1 holding tank and Y-valve with overboard discharge. The spacious main salon will accommodate a large family with plenty of room and a sofa bed and reclining chairs.

### Master Stateroom

- Centerline Queen bed
- Private head w/shower
- 3 hanging lockers and drawer space

### Midships Cabin

- Located aft of the main salon to starboard with over/under single berths and head opposite

### Forward Stateroom

- Stacked upper/lower berths to port with hanging locker and draws to starboard

### Main Salon

- 32" TV
- Pull out queen size bed



- Reclining chair
- Salon table is from a 125' yacht

---

## Galley

---

Full galley down to starboard. Opposite the galley is the dinette with table that drops down to allow for a double berth. Two opening ports in the dinette area.

- Double stainless steel sinks
- Full size refrigerator w/freezer & ice maker
- Princess 3 burner electric stove w/oven
- Microwave oven
- Toaster
- Hot/Cold pressure water systems

---

## Extras

---

- Nilson electric windlass
- FX Fortress anchor
- Swim platform w/ladder
- Bimini on bridge
- Marquipt low profile electric davit
- All fenders, lines, and shore power cables included w/sale

---

## Exclusions

---

Owner's personal belongings.

---

## Disclaimer

---

The Company offers the details of this vessel or yacht in good faith but cannot guarantee or warrant the accuracy of this information nor warrant the condition of the vessel. A buyer should instruct his representatives, agents, or his surveyors, to investigate such details as the buyer desires validated. This vessel or yacht is offered subject to prior sale, price change, or withdrawal without notice.

# PHOTOS

**Fly bridge helm controls**



**Fly bridge w/seating**



**Aft seating on fly bridge**



**Fly bridge stairs**



**Dingy**



**Aft Seating**



**Aft deck wet bar/sink**



**Aft deck fridge**



**Strb. side**



**Port side**



**Salon TV & entertainment center**



**Salon seating**



**Salon chair**



**Steps from galley to salon**



**Breakfast nook**



**Galley with double sink**



**Galley with oven**



**Galley**



**Galley fridge**



**Stern bunks (top)**



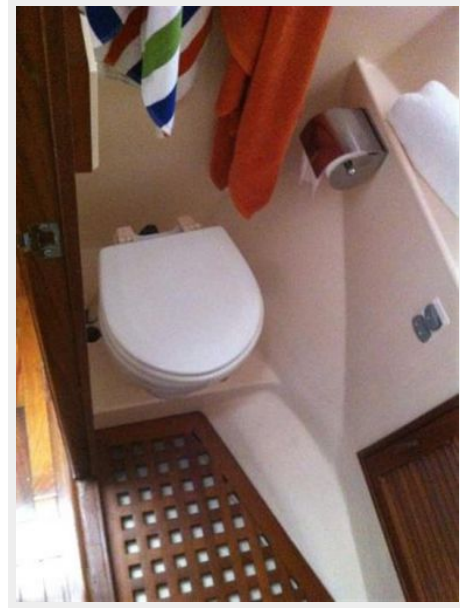
**Stern bunks (bottom)**



**Stern Head w/sink**



**Stern head w/shower**



**Stern closet**



**Electric panel**



**Breaker box**



**2nd stateroom bunks (top)**



**2nd stateroom bunks (bottom)**



**2nd stateroom closet**

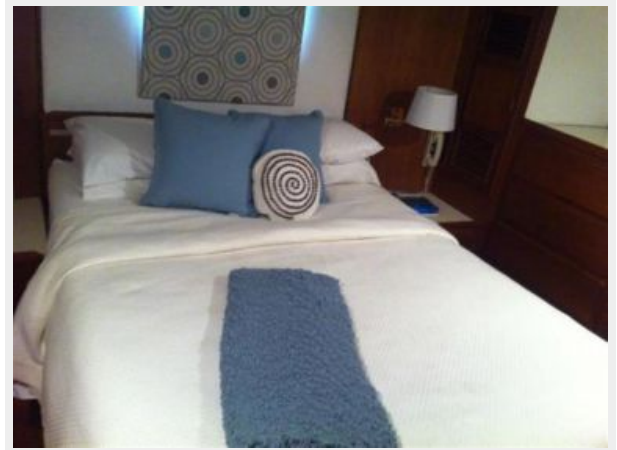




**2nd head with shower**



**Master stateroom bed**



**Master stateroom (port view)**



**Master stateroom (strb. view)**



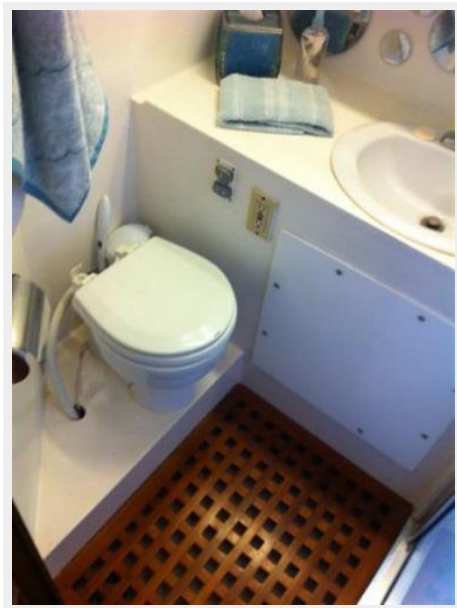
**Master stateroom closet**



**Master shower**



**Master head**



**Master head w/sink**



**Engines**



**Engine room**



**Port engine**



**Engine tachometer (port)**



**Strb. engine**



**Engine tachometer (Strb)**



**Water heater**



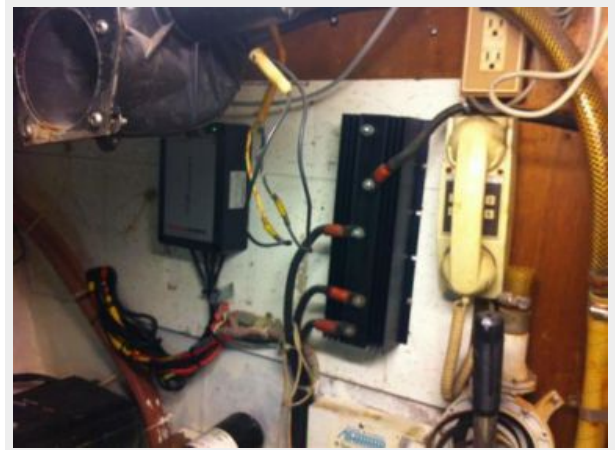
**Engine room**



**Engine room**



**Engine room**



**Engine room**



# CONTACTS

---

Andrey Shestakov, leading yacht broker of the sales department of Shestakov Yacht Sales Inc. Shestakov Yacht Sales Inc., the official representative of the Miami/Fort Lauderdale FL headquarters.

## Contact details

---

Email: [andrey@shestakovyachtsales.com](mailto:andrey@shestakovyachtsales.com)

Web: [shestakovyachtsales.com/en/](http://shestakovyachtsales.com/en/)

## Telephones

---

USA: +1(954)274-4435

## Office hours

---

Monday – Saturday: **9:00 - 21:00** EDT

Sunday: **closed**

## Address

---



Harbour Towne Marina, 850 NE 3rd St,  
STE 213, Dania, FL 33004