

ROSETTA — SOUTHERLY YACHTS



Судостроитель: Southerly Yachts

Год постройки: 2010

Модель: Крейсерская яхта

Цена: ЦЕНА ЯХТЫ ПО ЗАПРОСУ

Местонахождение: United States

Длина общая: 58' 2" (17.73m)

Ширина: 17' 1" (5.21m)

Мин. осадка: 3' 6" (1.07m)

Макс. осадка: 10' 9" (3.28m)

Крейс. скорость: 9 Kts. (10 MPH)

Макс. скорость: 10 Kts. (12 MPH)

Купить **ROSETTA** — **Southerly Yachts** а также выбрать подходящую вам яхту из нашего каталога яхт вам поможет опытный яхтенный брокер Андрей Шестаков. На сегодняшний день компания **Shestakov Yacht Sales Inc.** имеет большое количество яхт в собственном списке продаж, а также тесно сотрудничает со всеми крупными яхтенными производителями по всему миру.

Для того чтобы купить яхту **ROSETTA** — **Southerly Yachts** а также проконсультироваться по любому вопросу связанному с покупкой, продажей, чартером яхт позвоните по телефону **+7(918)465-66-44**.

ОГЛАВЛЕНИЕ

ОГЛАВЛЕНИЕ	2
ХАРАКТЕРИСТИКИ	6
Основная информация	6
Размеры	6
Скорость, вместимость и масса	6
Размещение	6
Корпус и палуба	6
Информация о двигателе	7
ПОДРОБНОЕ ОПИСАНИЕ	8
Specifications	8
Vessel Overview/ Description	8
Accommodations	9
Galley	10
Navigation Equipment	10
Rigging	10
Machinery	11
Electrical	11
Engineering Equipment	12
Entertainment Systems	13
Tenders and Toys	13
Deck and Hull	13
Tender Garage	14
Safety Equipment	14
Исключения	15
Отказ от ответственности	15
ФОТОГРАФИИ	16
Starboard Quarter	16
Sailing Less Windshield and Canvas	16

Ground Tackle Retractable Sprit	16
Enclosure Overhead	16
Headsail Furlers	16
Mast Base	16
Self Tackling Jib	17
Main Traveller	17
Flush Hatches for Saloon	17
Foredeck	17
Dorade	17
Carbon Rig	17
Cleats Flush	18
Nomen Folding Cleats	18
Windshield Detail	18
Windlass	18
Garage Open	18
Garage Remote Control Shower	18
Transom Steps	19
Transom Shower	19
Transom Boarding Ladder	19
Forward Wippers	19
Electric Primary Genoa Wenchies	19
Life Raft	19
Radar Mast	20
Life Sling	20
Scanstrut Pods at Helms and Forward	20
Port Helm Station	20
Port Helm Looking Aft	20
Starboard Cockpit Helm	20
Starboard Helm Looking Aft	21

Extra Controls and Screen	21
Forward Cockpit	21
Salon Port	21
Salon Starboard	21
Salon Looking Aft	21
Snug Area	22
Maser Starboard Seating	22
Master Head	22
Overhead Detail	22
Starboard Guest VIP	22
Starboard Guest Shower	22
Remote Sailing Instruments in Master	23
Forward Starboard Childrens Cabin	23
Aft and Down Starboard VIP Double	23
Galley Aft Port	23
Galley Port Forward	23
Front Load Fridge	23
Drinks Wind Fridge	24
Microwave	24
Dishwasher	24
Trash Compactor	24
Electrical Distribution	24
Epirb	24
Fuel Manifold	25
Engine Sound Proofing and Safety	25
Main Engine	25
Title	25
Layout	25
КОНТАКТЫ	26

Контактная информация	26
Телефоны	26
Время работы	26
Адрес	26

ХАРАКТЕРИСТИКИ

Основная информация

Тип судна: Крейсерская яхта	Модельный год: 2010
Год постройки: 2010	Страна: United States

Размеры

Длина общая: 58' 2" (17.73m)	Длина по ватерлинии: 52' 6" (16.00m)
Ширина: 17' 1" (5.21m)	Мин. осадка: 3' 6" (1.07m)
Макс. осадка: 10' 9" (3.28m)	

Скорость, вместимость и масса

Крейс. скорость: 9 Kts. (10 MPH)	Макс. скорость: 10 Kts. (12 MPH)
Вместимость воды: 228 Gallons	Вместимость сточного бака: 105 Gallons
Объем топливного бака: 300 Gallons	

Размещение

Всего кают: 4	Всего коек: 6
Спальные места: 8	Всего ком. состава: 3

Корпус и палуба

Материал корпуса: GRP	Цвет корпуса: Off White 3936
Дизайнер корпуса: Ed Dubois	Дизайнер экстерьера: Ed Dubois
Дизайнер интерьера: Rhoades-Young	

Информация о двигателе

Производитель: Steyr	Модель: MO 166K28
Тип двигателя: Inboard	Тип топлива: Diesel

ПОДРОБНОЕ ОПИСАНИЕ

Specifications

Boot top Gelcoat: Cherry Red 'LR23010' Twin style stripes: Vinyl to match Cherry Red Ring deck: Teak laid Antifouling paint : Dark Grey Engine: Steyrmotors Steyr Marine Engine MO166K28 163hp Bowthruster & Sternthruster fitted : YES Keel: Swing Keel Spars: GMT composite Spars triple spreader Carbon mast, GMT Powerfurl In boom furling system (see rigging) Sails: North sails Upgrade to SRP dyneema UV strip on sails: White Mainsail cover : N/A Upholstery: Saloon: Warwick Hero Ardo Cream Upholstery: Navigation Seat: Sunbrella Cousins 5366 Pennant Heather Jockey" coated with water repellent, Stripes to run across the width of the cushions Upholstery: Snug Seat: Sunbrella Cousins 5366 Pennant Heather Jockey" coated with water repellent, Stripes to run across the width of the cushions Upholstery: Single berths Cabins: Warwick Hero Ardo Cream covered memory foam berths. Note top Bunk will have a thinner mattress to act as back rest when top bunk is hinged down. Upholstery: Master cabin headboard: Aberdeen Russet with an angled back rest Quarter seats to be covered in Ardo Porridge. Change quarter seats to be covered in Aberdeen Russet Upholstery: Double berth cabins: Mattresses to be 3" Plus 3" Memory Foam with Jersey stretch covers. No day covers Curtains: Sleeping cabins: Breeze Blinds Tup PL710 Joinery: American Cherry Cabin layout: Optional Tender Garage with 4 cabin layout - See joinery section for detail of custom joinery amendments. As per Northshore proposed GA dwg no. S57RS-1301 rev 4 8/5/09 Galley work top: From formica counter base:- Sea Glass. Fiddles and Splash backs:- Bleached concrete Heads counter tops: Formica :- Citron Ice 7 Shower tray inserts to be "Staron Pebble Grey 810" Corian type smooth surface with finger holes for removal NS Note On the water package Mast stepped, rigged, sails fitted. Fully commissioned & launched at Itchenor. Tested & sea trialed. A full days familiarisation sailing handover. Full tank of diesel. Antifoul. 8 Fenders. 4 Warps. Boat hook. British Ensign yard and a half with suitable flag staff (Customer will provide USA Ensign). Gas bottle (1 bottle supplied as standard), 2 winch handles BUILT TO CONFORM TO EU SPECIFICATION & EC CATEGORY A BUILT TO CONFORM TO US WIRING SPECIFICATION

Vessel Overview/ Description

Superyacht designers, Dubois Naval Architects and renowned interior designers Rhoades Young were commissioned to work alongside the Southerly design team, to create this flagship of the Southerly range. ROSETTA's innovative design, powerful sailing performance, superior build quality and luxurious four stateroom accommodations plan are all hallmarks of this Southerly 57RS line. This ultimate blue water yacht offers the very best in cruising comfort while offshore or gunk holing along your favorite coastline. ROSETTA's hull is characterized by a long waterline, fine entry and beam carried aft to ensure the highest degree of performance, comfort, stability and safety. The beautifully stylish lines of the coach roof exudes sophistication and elegance, normally only seen on much larger yachts. ROSETTA has been customized with her sleek, built in windshield and hosts a wide variety of custom canvas options including full enclosure to simple Bimini arrangement. ROSETTA is primarily designed for easy handling, and

can be sailed by just two people. The tall powerful rig with swept back spreaders will keep the yacht sailing fast in all weather conditions, with minimum effort. The double headsail rig is suitable for most wind conditions and sailing environments; the self-tacking jib allows you to sail easily on short tacks without any effort - ideal for coastal cruising. ROSETTA's overlapping, upgraded genoa enhances upwind performance in light airs, and together, the double headsail is perfect for downwind trade wind sailing. An asymmetric gennaker, for offwind sailing, can be flown from a hydraulic retractable carbon bowsprit. Most notably, ROSETTA's sail plan is supported by her GMT Carbon 3 spreader mast and carbon hydraulic in boom furling package offering the very finest in modern day sail handling. Combined with the benefits of the unique Swing Keel, deep draft performance and shallow draft freedom, this Southerly 57RS is in a class of her own. Attention to detail, ensures the design is well founded and of a pedigree that derives from being born in the traditions of yacht design. Every corner, junction and unused volume is re-worked and re-engineered until the most efficient and aesthetically pleasing solution is found. The interior style is traditional in its practicality but with contemporary, fresh touches in appearance. The overriding impression is of light and space with connection between inside and out through extensive windows both to the sides and forward, affording commanding views when relaxing in the raised saloon seating. Come and get a little closer to ROSETTA to understand how she may best suit your future yachting endeavors.

Accommodations

ROSETTA hosts a 4 SR layout with full beam master ensuite cabin forward flanked by a smaller guest cabin aft and to starboard. This guest cabin easily doubles as additional stowage for the master. Next aft is the full beam galley and snug area hosting an abundance of counter space, easy access appliances found in most home kitchens? There is a breakfast nook / snug area to starboard. Moving up and aft to the raised salon the chef is not forgotten. Open back seating allows for magnificent lighting, communications and sight lines. Dining to port or starboard with exceptional scenic views to the outside one will feel an amazing sense of openness. Down to port is the state of the art nav area with all the goodies. Day head and guest cabin with upper and lower single berths follow aft. Down and to starboard one will find a very comfortable double berth guest cabin with ensuite head and shower. ROSETTA interior will offer you an exceptional feel of openness. She is bright and airy with exceptional natural lighting and ventilation. Shut the generator and five air con units down for quiet ship operation and enjoy the surroundings in distinct pleasure. All interior joiner work is furniture grade and constructed of American Cherry with gloss varnish finish. Memory foam mattresses, upgraded fabrics throughout and so many other finer aspects of this vessel confirm her no expense spared build nature! You will not be disappointed! PLEASE SEE GA FOR DETAILS however note if crew is desired the port aft cabin with adjoin head and shower might be most suitable and provide ample privacy for all. This head also serves as a day head with access just aft of the Nav area. On deck accommodations include an inviting and spacious aft cockpit with centerline drop leaf table allowing comfortable dining for 8 when set or easy walk around through and past her twin pedestal steering wheel arrangements for easy access to swim platform and garage. Her teak cockpit table hosts a drinks fridge within. It should be further noted that the cockpit may be fully enclosed with her numerous

options on her stainless steel framework, Bimini, dodger and drop curtains. There is additional seating on deck at the custom teak bow pulpit and pushpit seats.

Galley

Front loading custom fridge with Top loading custom freezer Isotherm 3200 ASU ice box fitted into insulated cockpit table Microwave 110 volt Patay Helford chrome freshwater hand pump fitted at galley sink S/S Quooker instant hot water Penguin Marine wine cooler c/w keel cooler. 66ltr, 3 bottles per shelf unit Kenmore trash compactor Vitrifrigo XT Half Height Ice Maker from Penguin Kenmore Single drawer dishwasher 4 burner cooktop with oven ???? Galley extractor. Slim line s/s hood with inline fan ducted to exterior Ice maker... fridge in cockpit table

Navigation Equipment

1 Ray 55 VHF Radio with DSC function at port helm 1 RAY 218 VHF Radio with DSC function, hailer with 'listen back' capability at chart table External hailer horn speaker for Ray 218E VHF radio mounted on spreader 5 Wire in mast maker supplied External hailer horn speaker for Ray 218E VHF 1 RayMic 2nd station hand mike for VHF 55E radio at nav station NS £379 1 RayMic 2nd station hand mike for VHF 218E at cockpit coach roof steering position Raymarine AIS 500 system Navtex 6 Plus 1 Iridium satellite phone system with USB laptop connection at chart table. Portable Iridium hand set to be used at snug point KVH TracVision M1 Satellite TV Antenna with 12v Direct TV Receiver Scanstrut post fitted to port aft quarter, through deck mounted for KVH M1 satellite receiver, GPS, Radar, Fore and aft facing spot lights plus stern nav light Navpod in front of companionway to mount ST70's and ST60 wind instrument & control pad Raymarine Navigation System including 2 E140 displays at aft steering stations and 1 E140 forward VGA output to 20" monitor located at nav station & 22" TV in master cabin. Both stations with Sea talk hardwired kidney shaped keyboard controls 4 x multi function ST70+ instruments and ST70+ keypad controls location: Nav station, Fwd master cabin, Port & starboard helm station Raymarine 18" Ethernet Raydome RD418HD c/w scanstrut bracket at stern Analog ST60+ wind display at each helm station Raystar 125 GPS antenna mounted on scanstrut bracket All associated cables, transducers and processors Additional Raystar 125 GPS antenna and wire with change over switch only Additional ST 60+ Wind display at companionway Lewmar Mamba drive autopilot with ST70 display in cockpit a Port helm pod and at chart table, SPX30 Smart pilot with Rate Gyro. Raymarine Smart controller wireless for autopilot charging lead and bracket, fitted at chart table and one additional auto pilot control at starboard helm. Helm Pod Customization, in Plant Pod for E140's at helm stations Teak table in cockpit with built in fridge

Rigging

GMT Composite Spars triple spreader Carbon Mast Upgrades to GMT Composites painted carbon fiber mast to include Painted carbon fiber spreaders, carbon fiber masthead & custom

extended masthead crane, Nitronic 50 rod standing rigging, optional Spinnaker pole track and car as per GMT composites written specification. Mainsail track to be custom extruded GMT Powerfurl boom track system attached to reinforced mast wall. GMT Powerfurl Hydraulic boom system Powered Genoa furling headstay - Furler 400 E 24v Powered Jib furling inner stay - Furler 400 E 24v Selden Carbon Fiber Bow Sprit - hydraulically extended with control at helm Navtec System 50 Hydraulic Panel in cockpit for Vang and Back Stay. Stainless Hydraulic Fitting specified for all hydraulic lines and equipment Navtec hydraulic Vang emergency dump valve Emergency cutoff / isolator button for powered winches & bow thruster systems 3 Spinnaker/Gennaker, blocks & custom S/S attachments 5 Spinnaker tack block excluding Tack line and spectra strop 1 Windex fitting at masthead Sails: (All by North Sails) Mainsail 92 m² (990 sq ft) Self Tacking Jib 59 m² (635 sq ft) Furling Genoa 104 m² (1,119 sq ft) Asymmetric Gennaker 188 m² (2,024 sq ft) Upwind: In boom furling Dyneema SRP sandwich SRP 75 Main Roller Furling Dyneema SRP 95 Jib Roller Furling Dyneema Genoa upgraded to SRP 75 for 16 knots true All Dyneema sails have been treated with SailKote by North Downwind: G2 Gennaker / Norlon 150 - Area 275 sq m , includes snuffer, sock and custom deployment bag from sail locker

Machinery

Steyr Marine Diesel rated at 163HP with 160 running hours coupled via Aqua drive bearing assembly, through dripless shaft log to a three bladed feathering Max propeller protected by an Ambassador line cutter on shaft Mathers electronic gear controls at both pedestals and forward coachroof Mastervolt Whisperquiet 10KW Generator with 60 running hours Aqua drive unit CVB21.20 Dual Racor fuel filter system LG-X 400 Fuel conditioner only one for main engine and one LG-X 200 for Generator Lewmar Bow and Stern Thruster Seafire automatic extinguishing system in engine and generator spaces

Electrical

50 amp 60 Cycle US compatible electrical system 110v socket and 12v sockets in abundance DC wiring is tinned Copper as per US specification Bus type distribution system 24V 330 Ah service battery bank system with dedicated 12v 90Ah main engine start battery Battery charger 12v - 15A main engine/ Generator start battery Battery charger 24v - 75 A Service battery bank NS STD 110 v Ring main: Includes a double outlet socket to each cabin, earth leak circuit breaker and connection cable (with plug for shore connection) and 60 litre capacity 1Kw Immersion heater fitted in calorifier. Upgrade 24v service batteries to AGM & increase capacity (24V 600 Ah) Upgrade 24v service batteries from 600Ah to 900Ah to meet 24v needs Upgrade 12v engine start battery to AGM & increase capacity (12v 200 ah) Mastervolt BTM battery monitor with Mastervolt Easyview touch screen monitor with shunt Mastervolt Generator WHISPER 10 Ultra 110V 9.4KW, 60Hz.1500 RPM n soundshield. Upgrade Generator start battery to AGM Service Alternator upgrade from 75A to 110A Service battery charger to MASS Combi Inverter charger unit 24/4000 120A Additional battery inverter combi for 24v needs 24/2000/ 60A Mastervolt automatic transfer switch 3 inputs - Shore/Generator/inverter Adverc alternator

regulator (boost) Low level LED cockpit lighting Automatic Wardrobe lighting: 4 wardrobes fwd cabins, 2 aft cabin wardrobes 10 - 12v interior socket (Cigarette lighter type) Position: 2 x master cabin, 1 x mid ship cabin workstation, 2 x port aft cabin, 1 nav station, 2 x saloon each side, 1 x stbd aft cabin, 1 x nook area. 2 - 12 volt 25amp socket fitted in cockpit (suitable for high load applications such as dinghy inflator) Position. Stbd lazarette locker & Port side helm station Additional 12v Service battery system Masthead anchor light, tricolor - steaming light and deck flood light Upgraded Deck level navigation lights to Lopo LED lights 1 50 amp 125/250 volt shore supply on cable master 1 50 amp 125 volt shore supply on cable master Red courtesy light in forward cabin Position: low level port and starboard

Engineering Equipment

Eberspacher diesel fired hot air heating system with 6 outlets (one to each cabin and salon saloon plus wet locker compartment and 2 additional heater outlets fitted to forward end of aft cockpit Extractor fan/blower fitted in heads with two way switch Bow thruster, Lewmar 250 TT with control at steering pedestal Stern thruster, Lewmar 250TT with control at steering pedestal Additional 2 x independent thruster controls for Stern & Bow thruster fitted to Stbd pedestal Max-prop (3 feathering blades) in lieu of standard Rope cutter: Ambassador AM10 on prop shaft Upgrade to Tecma electric toilets, in lieu of standard Holding tank system: heads pump to sea or into tank. 3 Grey water localized sump boxes to reduce number of skin fittings. Single skin fitting for all three heads and galley combined. 3 X Shaver socket. State position: Each head underside of cabinet out of sight 5 Ground fault interrupt 110v socket in each heads for hair dryer Watermaker: (generator required) Fit HRO Safari Escape 600, 95 ltrs/hr (?????) complete with cruiser pack Aquafilta water filter Seawater Deck wash pump with outlet at bow Freshwater Deck wash pump with outlet at bow Seawater Deck wash pump with outlet in tender garage. Freshwater Deck wash pump with outlet in tender garage Deck shower with hot & cold water fitted in cockpit Deck shower with hot & cold water fitted in garage area for use on bathing platform Sea Fire Automatic fire extinguisher system installed in engine compartment Sea fire manual control located in cockpit. Analogue Tank monitors - Fuel, Water and Black Water Hella 12v cabin fans (12). Units linked to Can Bus system Splendide Washer / Dryer combi unit WD2100 XC. 2 x Pantagraph windscreen wipers fitted to main coachroof windows with washer jets. Reverse cycle air conditioning system. To consist of 1 x Climma 16000 BTU unit to Saloon, 2 x Climma 7000 BTU unit to Twin aft cabins, 1 x Climma 10000 BTU unit to Forward master cabin and 10000 BTU for Galley & Midships guest cabin. System to run independently of Eberspacher Hot air Diesel powered heating system fitted as standard. 2 x High water level alarm hard wired 1 LPG gas & Carbon Monoxide detection, includes solenoid control switch fitted for galley. Sensors located in low level lying area for galley & generator. Blowout drain in the fresh water system to facilitate winterizing Additional electric bilge pumps Red and white overhead light to snug area 2 additional over headlights fitted above head of berth in master Power supply for Future fit of owner supplied davits Sea Fire Automatic fire extinguisher system installed in machinery compartment.

Entertainment Systems

Waterproof cockpit speakers for radio/ CD/MP3 stereo system Glomex TV antenna at position TBA possibly with transom aerials if masthead is to full - one outlet with splitter system for 3 x TV's Polyplaner RD44 zoned sound system with controls in Master cabin, Saloon & Cockpit. System includes Ipod interface and cradle plus CD changer at Nav station . 3 x HDTV's. 1 x 22" Combi TV/DVD in Starboard aft cabin, 1 x 22" Combi TV/DVD Master cabin forward and 1 x 32" Combi TV/DVD Saloon

Tenders and Toys

1 Williams 325 turbo jet RIB -with quick release wheel 1 VHF white flush mounted to RIB steering console Bathing Ladder LED Lighting Lifting Strops Automatic Inflator Anchor and Rope Telescopic Paddle Cushion color - Sunbrella Acrylic canvas 25034 Burgundy NS £338

Deck and Hull

Non standard hull colour - Off White 3969 2504A N.E.C. Teak laid decking to ring decks and fwd coachroof area Teak laid decking to cockpit coamings 8 x size 300A Nomen folding cleats, in lieu of standard 3 Aft open type fair leads by Schaefer Marine 60-60 3 Forward open type mooring fair leads on bulkhead type Schaefer Marine 60-60 NS £856 Anti Chafe stainless steel strips in way of mooring cleats Kevlar Hull Reinforcement :Total coverage area including overlaps will be 45m2 Kevlar hull reinforcement to include Kevlar below the waterline and full extent of the topsides forward tapering down to 150mm above DWL in the region of the mast. Kevlar as Woven Aramid Kevlar 49 - K0931 Plain Weave Cloth at 285gsm sandwiched between two layers of 300CSM. 600/300 biaxial (Metric equivalent to CM1808) to both sides of watertight sail locker bulkhead (ply 22mm BS1088) as additional reinforcement. Additional 6" tabbing to be applied upon bulkhead installation. Forward face to be finished in Gelcoat/Aft face to be finished in American Cherry Flow Coat interior hull surface to be White and applied all the way to hull to deck joint. All Glasstinted NOT mirror finished 2 Steering wheels covered with hide Custom Cockpit cushions using drainable foam - mesh fabric on bottom, fabric to be "Sunbrella Cushions/Coussins 5366 Pennant Heather Jockey" coated with water repellent, Stripes to run across the width of the cushions. Upgrade charge from FOF for special fabric & treatment. Cockpit Cushions inclusive of helm seat with custom back rest and cockpit custom back rests instead of standard. Wheel, table & pedestal pod covers - Sunbrella plus fabric - 5034 Burgundy Satin varnished Teak cockpit table Windlass: Lewmar V5 with gypsy in lieu of standard, complete with control head and chain counter Double teak seats at pushpit Single seat with teak slats located on each side Port & Stbd Teak pad for outboard engine stowage fitted to pushpit Lewmar 48 AEST powered halyard winches Port & starboard side in lieu of standard Lewmar 68 AEST powered Genoa sheet winches in lieu of standard Lewmar 54AEST powered main sheet winches in lieu of standard Lewmar size 30 pilothouse hatches Line bags with winch handle pocket mounted either side of companionway 1 Wind sock to fit forward deck hatch NS £442 9 Bracket to hold Fortress FX 37 anchor to be situated in Fwd sail locker Warp and chain for Kedge

anchor (20ft chain 250ft warp) Four Additional halyard lead blocks and clutches , topping lift clutch to be upgraded to main halyard load capability. Clutches to be XX type Helm seat should be raised by 4" to be a custom molded locker top with back rest to be a two bar and cushion construction. Companionway step removable step 60mm high. to aid access to stepping over companion way threshold. To be grating type Helm step to be grating type, 60mm high when flat but needs to be angled outboard to create level when the boat is heeled. inboard side has fiddle to prevent feet sliding off Fore and Aft Dorade Vents Mooring Cleats with anti chafe rubbing strips Custom cowl vents and dorades

Tender Garage

Hydraulically opening and closing transom door creates magnificent water access with teak beach, swim ladder, hot and cold shower while offering the utility space for housing Williams Jet tender. A custom deployment launching and recovery system has her in and out in a flash. Stunning! Out of sight out of mind!

Safety Equipment

Horseshoe lifebuoy (yellow) with plastic bracket & light Liferaft: Plastimo 8 man Offshore std pack cannister Position: Port side pushpit. Plastimo 316L universal liferaft stowage cradle 1 Harness lifeline jackstays port & starboard (PVC coated wire) US Coast Guard required safety equipment Additional Build Attributes / Domestic and Engineering: Domestic and Joinery Equipment: Chopping board sink cover 8 x lee cloths Concertina blinds fitted in raised coachroof area Upholstery upgraded fabrics Roller shade screens & blinds to all cabin hatches All upholstery to be Scotch Gaured Forward and aft double berths upgraded to memory foam Single bunks upgraded to memory foam Custom Windshield & canvas sprayhood/cockpit enclosure 1 Stainless Steel framed angular windshield Additional handrails fitted to custom windshield side screen port and starboard Pantograph Windscreen wipers with washers on outboard windscreen Sprayhood in canvas fitted to windscreen c/w s/s frame and side windows. Bimini in Sunbrella Supreme upgrade 4311 Burgundy. Bimini to have zipped removable middle section. Zipped up side panels with standard window material. Side panels can be removed or rolled up for stowage when not in use. Floor protection sheets in the saloon walkways and lower walkway / galley with poppers in each corner Hook points and strap for Galley for off shore bracing for cooking Mirrored medicine cabinet to all head compartments with stainless steel wire basket fixed to back of cabinet door to hold shampoo and shaving foam Insulated aft cabin centreline bulkhead. To consist of 22 mm structural bulkhead, 25mm sound proof insulation material each side framed with 4 mm American Cherry faced marine ply. Overall bulkhead thickness approx 80 mm Forward master cabin to include upholstered seats Port & Starboard Port aft cabin - Hinged upper berth to become seat backrest Cedar lining to all hanging lockers Wine rack stowage to cool area. Space for case stowage and soft drinks to be advised. Locker space at aft end of snug to be for wine stowage and soft drinks Removable Shelf in locker with fiddle. Interior flooring is laminated teak and holly effect, teak strips 100mm with 6mm Holly stripe All steps are solid teak with rubber anti slip strips as indicated in Rhoades Young

drawings. Mirror with cherry frame fitted in mid ships cabin above draw unit Mirror with cherry frame in Forward cabin on back of entrance door. Additional wire baskets 2 off and mirror in forward heads Fit folding seat to forward heads shower Cut new aperture for Draw unit and fit draw unit into lower midships cupboard. To be accessed from forward master cabin Forward heads fittings above standard spec - 2 additional towel rails and soap dish STBD Aft heads fittings above standard spec - 2 additional towel rails and soap dish plus housing for toilet roll holders. Port Aft heads fittings above standard spec - 1 additional towel rails and soap dish plus housing for toilet roll holders. Snug Boxing of seat Custom boxing required on aft facing seat typical dimensions to be confirmed. 18" high 7" deep with back rest cushion to extend 3" above this plus having a fence on the inboard side. Modify Saloon tables and build up floor nosing to move Saloon tables in board to increase foot space when seated out board, Note tables have had to be strengthened with alloy plate to allow for grater cantilever load. Additional water tank of approximately 60 gallons forward Inspection trap in saloon floor boards to Machinery compartment (not a full man access, just for inspection).

Исключения

При продаже яхты исключаются личные вещи владельца.

Отказ от ответственности

Компания предоставляет описание судна или яхты добросовестно, но не может гарантировать точность этой информации, а также не ручается за техническое состояние. Покупатель должен проинструктировать своих агентов или оценщиков исследовать представленную информацию более подробно, по собственному желанию. Продажа судна или яхты, изменение цены или снятие с продажи будет происходить без предварительного уведомления.

ФОТОГРАФИИ

Sailing Less Windshield and Canvas



Starboard Quarter



Enclosure Overhead



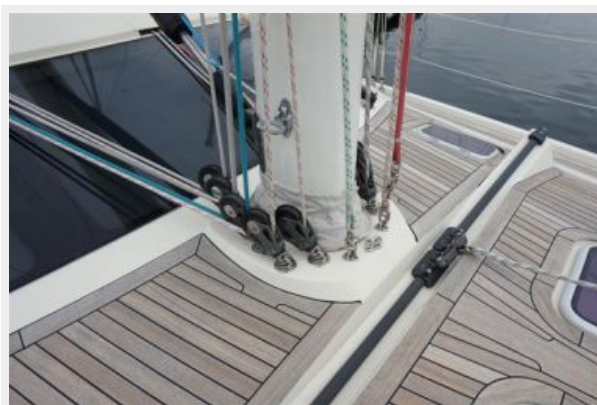
Ground Tackle Retractable Sprit



Headsail Furlers



Mast Base



Self Tackling Jib



Main Traveller



Flush Hatches for Saloon



Foredeck



Dorade



Carbon Rig



Cleats Flush



Nomen Folding Cleats



Windshield Detail



Windlass



Garage Open



Garage Remote Control Shower



Transom Steps**Transom Shower****Transom Boarding Ladder****Forward Wippers****Electric Primary Genoa Wench****Life Raft**

Radar Mast



Life Sling



Scanstrut Pods at Helms and Forward



Port Helm Station



Port Helm Looking Aft



Starboard Cockpit Helm



Starboard Helm Looking Aft**Extra Controls and Screen****Forward Cockpit****Salon Port****Salon Starboard****Salon Looking Aft**

Snug Area



Maser Starboard Seating



Master Head



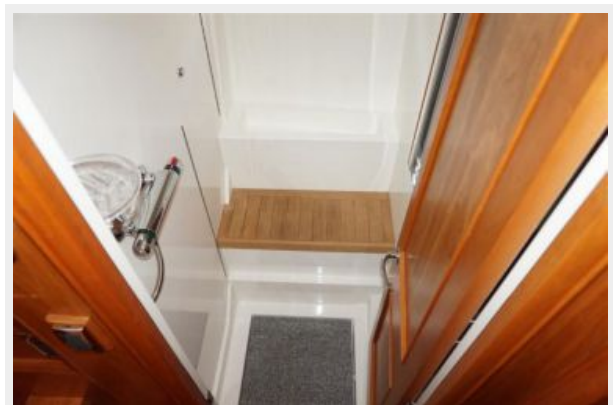
Overhead Detail

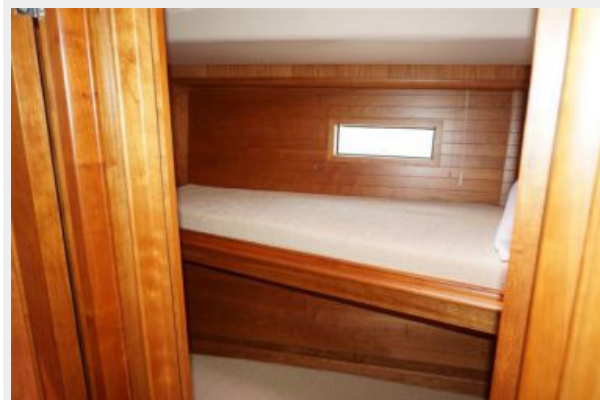
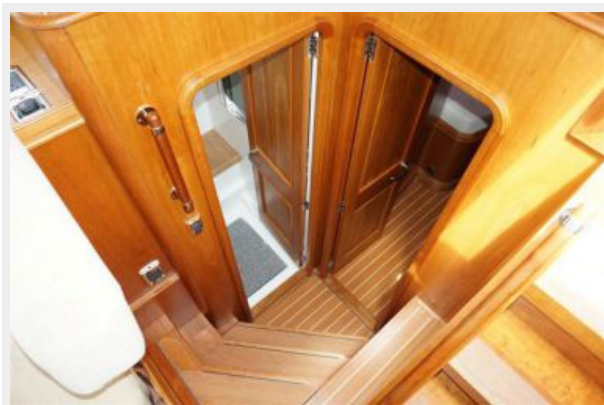


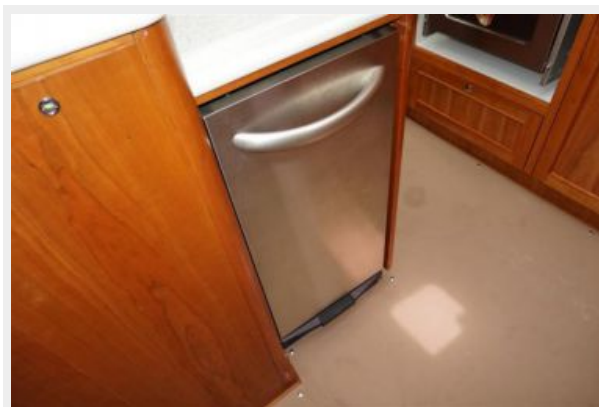
Starboard Guest VIP



Starboard Guest Shower



Remote Sailing Instruments in Master**Forward Starboard Childrens Cabin****Aft and Down Starboard VIP Double****Galley Aft Port****Galley Port Forward****Front Load Fridge**

Drinks Wind Fridge**Microwave****Dishwasher****Trash Compactor****Electrical Distribution****Epirb**

Fuel Manifold**Engine Sound Proofing and Safety****Main Engine****Title****Layout**

КОНТАКТЫ

Андрей Шестаков (Andrey Shestakov) – ведущий яхтенный брокер отдела продаж яхт и судов компании Shestakov Yacht Sales Inc. Официальный представитель Shestakov Yacht Sales Inc. для русскоговорящих клиентов в центральном офисе компании в Майами/Форт Лодердейл/Флорида/США.

Контактная информация

Email: **andrey@shestakovyachtsales.com**

Web: **shestakovyachtsales.com**

Телефоны

Краснодарский край: **+7(918)465-66-44**

США, Майами, Флорида: **+1(954)274-4435**

Время работы

Понедельник – Суббота: **9:00 - 21:00**
EDT

Воскресенье: **Закрыто**

Адрес



Harbour Towne Marina, 850 NE 3rd St,
STE 213, Dania, FL 33004