

ZANTINO III — DENISON



Судостроитель: DENISON

Год постройки: 1986

Модель: Мега-яхта

Цена: ЦЕНА ЯХТЫ ПО ЗАПРОСУ

Местонахождение: United States

Длина общая: 106' 0" (32.31m)

Ширина: 22' 8" (6.91m)

Мин. осадка: 6' 2" (1.88m)

Макс. осадка: 6' 8" (2.03m)

Крейс. скорость: 17 Kts. (20 MPH)

Макс. скорость: 22 Kts. (25 MPH)

Купить **ZANTINO III — DENISON** а также выбрать подходящую вам яхту из нашего каталога яхт вам поможет опытный яхтенный брокер Андрей Шестаков. На сегодняшний день компания **Shestakov Yacht Sales Inc.** имеет большое количество яхт в собственном списке продаж, а также тесно сотрудничает со всеми крупными яхтенными производителями по всему миру.

Для того чтобы купить яхту **ZANTINO III — DENISON** а также проконсультироваться по любому вопросу связанному с покупкой, продажей, чартером яхт позвоните по телефону **+7(918)465-66-44**.

ОГЛАВЛЕНИЕ

| | |
|---|----|
| ОГЛАВЛЕНИЕ | 2 |
| ХАРАКТЕРИСТИКИ | 3 |
| Обзор | 3 |
| Основная информация | 3 |
| Размеры | 3 |
| Скорость, вместимость и масса | 4 |
| Размещение | 4 |
| Корпус и палуба | 4 |
| Информация о двигателе | 4 |
| ПОДРОБНОЕ ОПИСАНИЕ | 5 |
| 2007 & 2010 Refit Upgrades | 5 |
| Accommodations, Pilot House, Engine & Gen. Room | 6 |
| Exterior: Foredeck & Fly Bridge | 8 |
| Lower Accommodations: Master & Guest S/R's | 9 |
| Исключения | 10 |
| Отказ от ответственности | 10 |
| ФОТОГРАФИИ | 11 |
| ARRANGEMENT PLANS - Lower, Main, and Upper Deck | 16 |
| КОНТАКТЫ | 17 |
| Контактная информация | 17 |
| Телефоны | 17 |
| Время работы | 17 |
| Адрес | 17 |

ХАРАКТЕРИСТИКИ

Обзор

Assume Slip Lease on prestigious Australian Dock for <\$4K/Mo

\$1.4MM REFIT 2007/2010 INCLUDING RE-POWERING USED W/CAT C-32'S: 22 KNOTS TOP & 17 CRUISE.

8,775 GAL FUEL & 900 GAL FRESH WATER

REFIT BY MAJOR FLL SHIPYARD, & SUPERVISED BY PATTON MARINE SURVEYORS.

NEW 50 KW & 80 KW JOHN DEERE GEN & ALL MAJOR MECHANICAL ELECTRICALSYS...

NEW TEAK DECKS, NEW ELECTRONICS, TANKS TESTED, & INTERIOR DECOR UPGRADES.

Classic Styling and Spacious interior..with 3 S/R'S & 4 Heads - Huge M Salon & Aft Deck.

Great Charter Potential - Could be modified to 4 Staterooms & 4 Heads

DYSID:2761718

Основная информация

Тип судна: Мега-яхта

Модельный год: 1986

Год постройки: 1986

Страна: United States

Размеры

Длина общая: 106' 0" (32.31m)

Длина по ватерлинии: 99' 6" (30.33m)

Длина палубы: 94' 0" (28.65m)

Ширина: 22' 8" (6.91m)

Мин. осадка: 6' 2" (1.88m)

Макс. осадка: 6' 8" (2.03m)

Трапы: 34' 0" (10.36m)

Скорость, вместимость и масса

| | |
|---------------------------------------|--|
| Крейс. скорость: 17 Kts. (20 MPH) | Крейсерская скорость поворота: 2000 Kts. |
| Макс. скорость: 22 Kts. (25 MPH) | Макс. скорость поворота: 2300 Kts. |
| Дальность на макс. скорости: 300 Kts. | Водоизмещение: 225000 Pounds |
| Вместимость воды: 900 Gallons | Объем топливного бака: 8775 Gallons |

Размещение

| | |
|-----------------------|---------------|
| Всего кают: 5 | Всего коек: 7 |
| Всего ком. состава: 6 | |

Корпус и палуба

| | |
|----------------------------|---|
| Материал корпуса: Aluminum | Комплектация корпуса: Semi-Displacement |
|----------------------------|---|

Информация о двигателе

| | |
|----------------------------|---------------------|
| Производитель: Caterpillar | Модель: C-32 |
| Тип двигателя: Inboard | Тип топлива: Diesel |

ПОДРОБНОЕ ОПИСАНИЕ

2007 & 2010 Refit Upgrades

2007 REFIT - \$400,000 INVESTED IN IMPROVEMENTS: *MECHANICAL*: Running Gear/Drive Train Alignment & Vibration Analysis

New John Deere 50 kW Generator Installed ('05)

Upgrading Air Conditioning Compressors & Air Handlers

Rebuild of Hydraulics Systems

Mechanical Reconditioning/Replacement of All Pumps, Including Bilge Pumps New (8) "Delta-T System" fans in Engine & Generator Room

New Fuel Polishing System

New "Groundfos" Water Pump - with Water Filter Assembly System

Watermaker - Rebuilt

ELECTRICAL:

Total Refit/Upgrade of Electrical System - (Marine Automation & Elec Eng Co)

New Oven

EXTERIOR:

New teak Decks Throughout

New 18-foot "Novurania"

INTERIOR: Crews' Quarters - Reconditioned - With New Carpet & Wall Coverings New Large Mirrors - Port & Starboard Guest Staterooms

OTHER:

Lloyd's Authorized Insurance Survey

2010 REFIT: \$1,000,000 + INVESTED IN UPGRADES:

MECHANICAL:

New CAT C-32 Main Engines @1,400 HP

New 80 kW "Northern Lights" Generator

ZF - Transmissions - Completely Serviced

New "Vulcan" Couplings

Running Gear/Drive Train Servicing & Props Balancing ("High Seas Technology")

Fuel Tank Repairs/Recertification & Pressure Tested ("Hull Technologies")

Renewing of Port & Starboard Shaft Tunnels

New Underwater Exhausts

Stabilizers - Service & Rebuild

Replacement of all Critical Fuel, Oil, & Water Hoses throughout

Major Reconditioning of all Engine Room & Lazarette Pumps

ELECTRICAL:

New Electronics Package

Audio - Visual Upgrades - Including Satellite TV's

EXTERIOR:

New Paint - Throughout

New Anti-Fouling Bottom Paint - Including New Cutlass Bearings

New Underwater Lights

INTERIOR:

New Carpets - Lower Deck/Accommodations & Dining Salon

Pilot House Reconditioning

Crews' Quarters Upgraded

New Tile in Guest Stateroom Heads

Accommodations, Pilot House, Engine & Gen. Room

OVERVIEW:

ZANTINO III is a Classic Motor Yacht - In Styling and Accommodations.

With full side-deck walk-arounds, guests would typically enter through either Port or Starboard

Wing Doors to the spacious, enclosed and air-conditioned AFT SALON. There is also an open AFT DECK, accessed through a teak door, and is large enough for entertaining or casual dining...with a newly installed Teak Deck.

The Spiral Staircase in the Port Corner of the AFT DECK leads to the GENERATOR/MACHINERY ROOM and SWIM PLATFORM.

From the Aft Deck, you enter the MAIN SALON through a Teak and Glass Door, which provides privacy and, at the same time two totally different entertainment or meeting areas. Cocktails and conversation starts on the AFT SALON, and guests can move forward to the more formal MAIN SALON

In the MAIN SALON, there are two different seating areas, with a large L-Shaped ("Convertible") Couch that provide pull-out beds for that occasional, unexpected overnight guest or grandchildren. The Owner's Desk in forward and to starboard, with some additional seating and a table for four...for meetings or a card game.

Walking forward along the starboard passageway, the POWDER ROOM is on the left, with a head and sink, adjacent to the PILOT HOUSE.

The FORMAL DINING SALON is just forward of the RAISED PILOT HOUSE, and on the same level as the MAIN SALON. The DINING SALON is classic, yet bright and comfortable, with seating for Six or Eight in blue and white upholstered chairs - around the highly polished Mahogany Dining Table. A custom Buffet is installed along the starboard side, with a striking Granite Top, with four swing-out SS cylindrical cabinets for dish and cutlery storage.

Through the swinging door on the forward starboard side of the DINING SALON is the GALLEY, where the Appliances have all been upgraded for the most efficient and professional preparation and service. There is a new Sub-Zero Double Door SS Refrigerator & Freezer, a new Dishwasher, two additional 7 cubic foot under-counter Refrigerators, an Ice Maker, Microwave, a "Jenn-Aire" Convection Oven with Extraction Fan, a Trash Compactor, a Double SS Sink, and plenty of Drawer and Storage Space.

Stairs on the forward, starboard corner of the GALLEY lead to the CREWS' QUARTERS and the ENGINE ROOM.

CREWS' QUARTERS accommodations are for four, and the mattresses, wall coverings, and new carpet was installed during the 2007 refit. There were miscellaneous joinery upgrades and repairs made as well. There are two heads, one for the Captain's Quarters and the second for the Crew. There is a CREWS' MESS, with a dinette and settee, which is adjacent to the Laundry Area.

The ENGINE ROOM is full-height, with plenty of headroom and light to service the new CAT C-32 Diesel Engines, along with the other Engine Room Equipment.

The GENERATOR/MACHINERY ROOM is located all the way aft, just forward of the Transom, which allows a better balance and longitudinal center of gravity, and easier access to maintain

the Mechanical and Electrical components.

Located there, are two new Air Conditioning Chillers, with two new self-priming raw water pumps, with integral expansion tanks. On the port side is the "John Deere" 50 kW Generator, fitted with "Soft" Sound Shield for noise attenuation. Alongside is the 40 Gallons per Day Water Maker.

To Starboard is the new 80 kW "Northern Lights" Generator, fitted with a PTO for the Hydraulic Bow Thruster. A second ship's Water Heater is also located on the starboard side.

There are two Electrical Panels for the Shore Power System, and the Generator and Ship's Service Batteries are also located in this Machinery Space. along with the Power Units for the Capstans and Davits.

An Emergency Steering System is installed on the center line of the vessel - easily accessible when needed.

The PILOT HOUSE is "Raised" approximately four feet above the MAIN DECK, for greater visibility and privacy for the Captain while underway, particularly for night cruising.

There is a Bench Seat directly behind the HELM STATION, which does allow for Observation, with Chart Drawer built in. There is a Navigation Area on the port side of console, with all the ELECTRONICS and Instrumentation built in to a custom upper and lower console.

The ELECTRONICS have been continually upgraded, with the most recent upgrade that of the Sat TV system. There are new Flat Screens installed, a new computer-plotter, "WI-FI," and a host of other navigation equipment and instrumentation, such as the "NAIAD" Stabilizer and Bow Thruster controls, fuel, fresh and black water tank gauges, and a complete Alarm Panel.

Under the floor of the RAISED PILOT HOUSE, is the "Plenum" and Storage area, where various Electrical Panels (12V DC, 24V DC, and 110V AC Sub Panels are installed.

Exterior: Foredeck & Fly Bridge

The Exterior SIDE and FOREDECK are Teak, and there is a comfortable seating area, with cushions and covers, built in to the forward Trunk Cabin of the Aluminum Superstructure. Port and Starboard Aluminum Deck Storage Boxes are covered with cushions and covers, and provide additional seating and/or places to sun and enjoy the cruise.

There is a large hatch above the CREWS' QUARTERS on the Center line, and a heavy-duty double "IDEAL" (A/C) windlass, with "frequency" drive (a recent upgrade), with a center/top Capstan for mooring and towing.

Directly below the Windlass is a Partitioned Chain Locker with sheathing and drainage, with double "Stockle" Anchor port and starboard, Hull-Guides, each with 300 feet of chain, and SS Hull Anchor Plates.

The FLY BRIDGE is accessed through stairs and a hatch from the port side of the PILOT HOUSE. As you arrive on the FLY BRIDGE, the Upper Helm Station is to your left on the Center-line, with a second set of Controls and Electronics. The forward section of the FLY BRIDGE is covered by the newly-recovered Bimini Top, providing shade for the Captain and guests who want to enjoy a cooler ride, out of the sun.

Twin Helm Chairs provide seating directly behind the Helm, and the large Aluminum MAST ISLAND dominates the center of the FLY BRIDGE, and supports the base of the large, two section hinged Aluminum Mast, home for all the necessary Antennas for Radar, SAT TV, Radios, Wind Indicator, etc., as well as the aft terminus of the Bimini Top.

There is almost sixty feet of aluminum built-in bench seating, with cushions, covers, and lots of storage for Life Jackets, etc., and a great place to enjoy the sun and outdoors.

Aft of the FLY BRIDGE is the BOAT DECK, with two Heavy Duty Davits, one each to port and starboard, to handle the Dinghy and Jet Skis, and other water toys.

Lower Accommodations: Master & Guest S/R's

There are three spacious STATEROOMS, accessed via the Spiral Staircase on the starboard side of the MAIN SALON,

The MASTER STATEROOM is Extra Spacious, and with "His & Hers" Heads, it can easily be split into two Stateroom, if a new owner would want a four Stateroom boat for Charter.

The MASTER STATEROOM, as presently configured, has the King-Size berth to starboard, with the entrance to the Stateroom, at the far port side, providing a very dramatic entrance. Built-in teak night stands flank each side of the King-Size Berth, with both providing lots of storage and drawers beneath. There are two chairs and a table at the end of the Berth, giving the space the feel of a "Grande Suite."

A Full-Length Dresser and Entertainment Center are built-in along the port side of the hull, with lots of drawers. The Aft Bulkhead is mirrored, full-length, giving the room an even more spacious look.

The "His (port side with shower) and Hers (starboard side with full tub)" Heads are against the aft bulkhead, providing a nice "Buffer" from the Generator/Machinery Room.

The "VIP STATEROOM" is located to Port and forward of the MASTER STATEROOM, and features a Queen-Size Berth, with storage under, and a built-in Dresser and Vanity is directly across from the foot of the bed, with a full height mirror above. The full Head and shower is against the Forward Bulkhead, providing a sound "Buffer" from the ENGINE ROOM.

The TWIN GUEST STATEROOM is located on the Starboard side, and has Twin Berths, each with Storage under, and a night stand between the berths. The full en-suite Head and Shower,

like that of the VIP STATEROOM, are against the forward Bulkhead, providing that extra sound "Buffer" from the well-insulated ENGINE ROOM.

Исключения

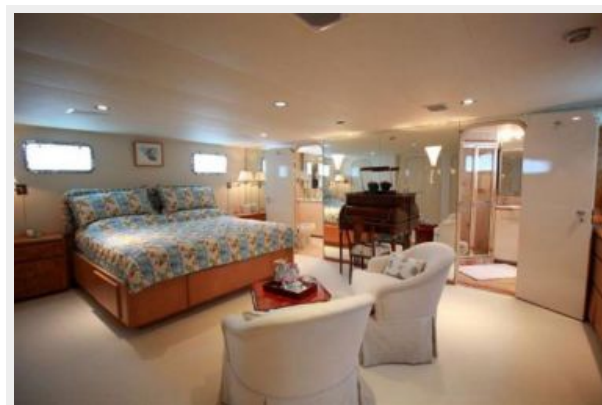
При продаже яхты исключаются личные вещи владельца.

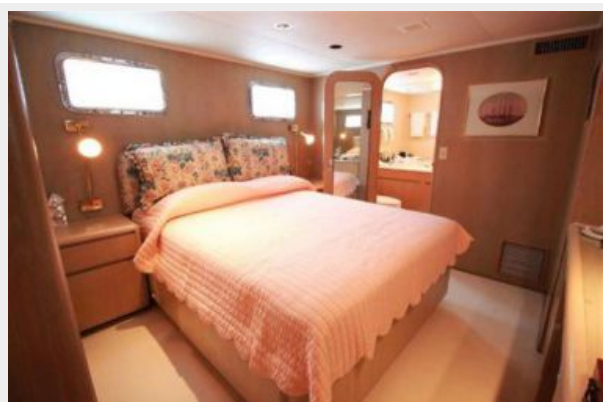
Отказ от ответственности

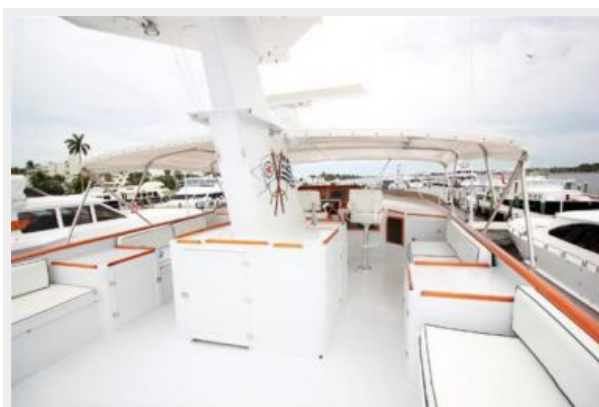
Компания предоставляет описание судна или яхты добросовестно, но не может гарантировать точность этой информации, а также не ручается за техническое состояние. Покупатель должен проинструктировать своих агентов или оценщиков исследовать представленную информацию более подробно, по собственному желанию. Продажа судна или яхты, изменение цены или снятие с продажи будет происходить без предварительного уведомления.

ФОТОГРАФИИ

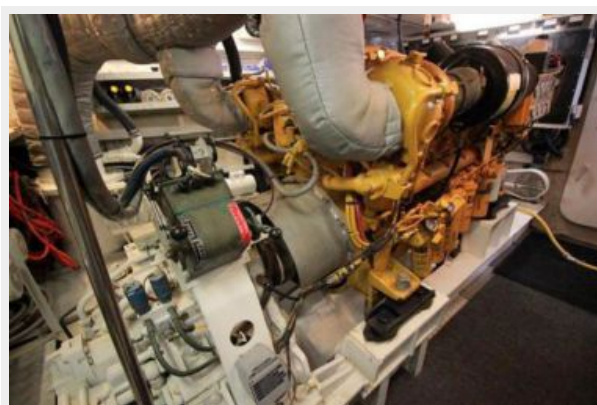
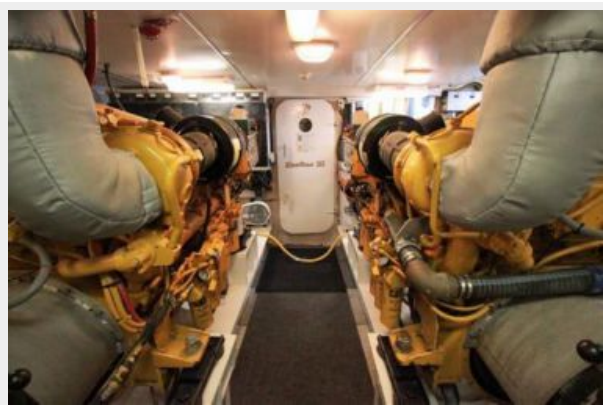




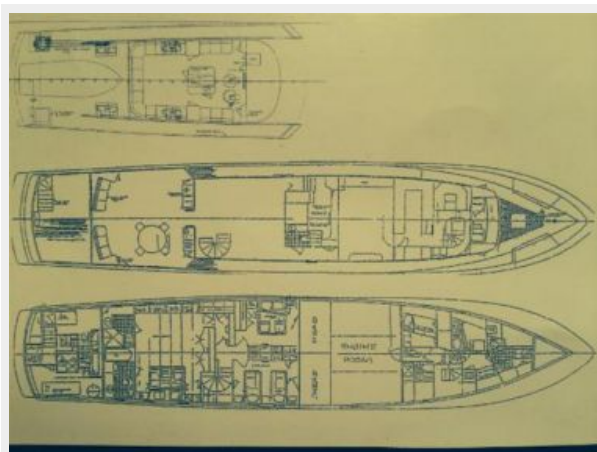








ARRANGEMENT PLANS - Lower, Main, and Upper Deck



КОНТАКТЫ

Андрей Шестаков (Andrey Shestakov) – ведущий яхтенный брокер отдела продаж яхт и судов компании Shestakov Yacht Sales Inc. Официальный представитель Shestakov Yacht Sales Inc. для русскоговорящих клиентов в центральном офисе компании в Майами/Форт Лодердейл/Флорида/США.

Контактная информация

Email: **andrey@shestakovyachtsales.com**

Web: **shestakovyachtsales.com**

Телефоны

Краснодарский край: **+7(918)465-66-44**

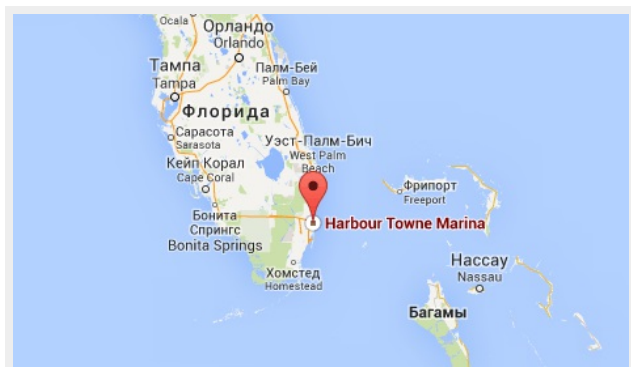
США, Майами, Флорида: **+1(954)274-4435**

Время работы

Понедельник – Суббота: **9:00 - 21:00**
EDT

Воскресенье: **Закрыто**

Адрес



Harbour Towne Marina, 850 NE 3rd St,
STE 213, Dania, FL 33004