

STARGAZER III — TRUMPY



Builder: [TRUMPY](#)

Year Built: 1956

Model: Cruiser

Price: PRICE ON APPLICATION

Location: United States

LOA: 55' 0" (16.76m)

Beam: 13' 10" (4.22m)

Max Draft: 4' 6" (1.37m)

Cruise Speed: 14 Kts. (16 MPH)

Max Speed: 16 Kts. (18 MPH)

Our experienced yacht broker, Andrey Shestakov, will help you choose and buy a yacht that best suits your needs **STARGAZER III — TRUMPY** from our catalogue. Presently, at Shestakov Yacht Sales Inc., we have a wide variety of yachts available on our sale's list. We also work in close contact with all the big yacht manufacturers from all over the world.

If you would like to buy a yacht **STARGAZER III — TRUMPY** or would like help answering any questions concerning purchasing, selling or chartering a yacht, please call **+1(954)274-4435**

TABLE OF CONTENTS

TABLE OF CONTENTS	2
SPECIFICATIONS	3
Overview	3
Basic Information	3
Dimensions	3
Speed, Capacities and Weight	4
Accommodations	4
Hull and Deck Information	4
Engine Information	4
PHOTOS	5
CONTACTS	9
Contact details	9
Telephones	9
Office hours	9
Address	9

SPECIFICATIONS

Overview

THIS IS A TRUE CLASSIC..A RARE 55 FOOT TRUMPY COCKPIT CRUISER MOTOR YACHT

"STARGAZER III" WAS METICULOUSLY RESTORED AT A COST OF OVER \$500,000 IN 1997-98

The resotation was closely supervised by the knowledgeable Owner & his Captain at the "ROSCIOLI YACHTING CENTER, famous for fine woodwork and fiberglass construction.

The Refit & Restoration was featured in "Millionaire" Magazine, in 1997, in an article titled: "TRUMPY, THE RESTORATION OF A CLASSIC"

The Hull and Side Decks and Cabin were Fiberglass, adding substantially to the life of the yacht.

A truly magnificent example of the exquisite workmanship performed in the TRUMPY Boat Yard in Annapolis, MD.

There are Accommodations for SIX, including two in the Forward Crews Stateroom.

This TRUMPY CLASSIC has TO BE SEEN TO BE APPRECIATED.

CALL KIT DENISON NOW FOR AN APPOINTMENT

Basic Information

Category: Cruiser

Model Year: 1956

Year Built: 1956

Country: United States

Dimensions

LOA: 55' 0" (16.76m)

LWL: 52' 0" (15.85m)

Beam: 13' 10" (4.22m)

Max Draft: 4' 6" (1.37m)

Speed, Capacities and Weight

Cruise Speed: 14 Kts. (16 MPH)

Cruise Speed RPM: 1850 Kts.

Max Speed: 16 Kts. (18 MPH)

Max Speed RPM: 2100 Kts.

Water Capacity: 125 Gallons

Fuel Capacity: 500 Gallons

Accommodations

Total Cabins: 3

Total Berths: 4

Total Heads: 2

Hull and Deck Information

Hull Material: Fiberglass

Engine Information

Engines: 2

Manufacturer: GM

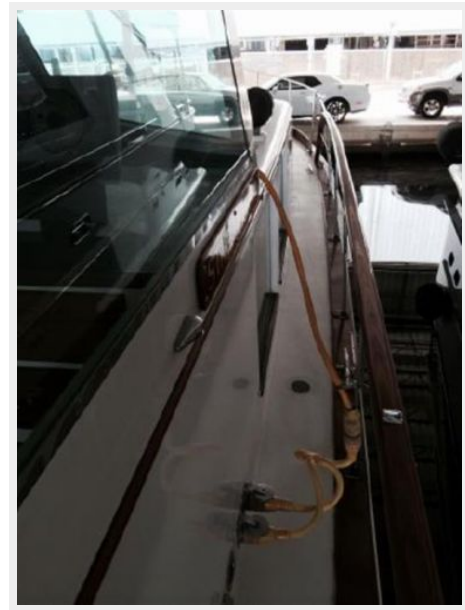
Model: 6-71 N

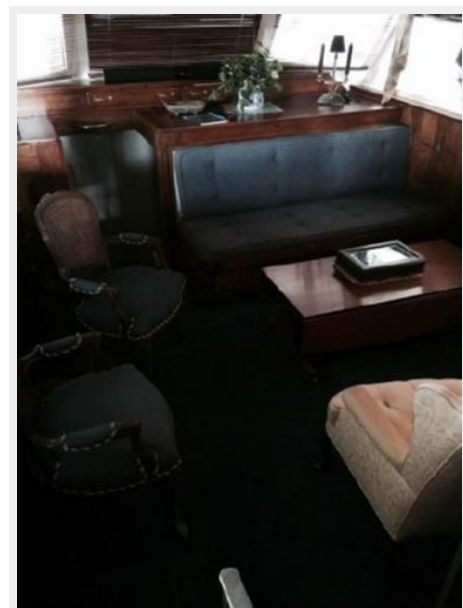
Engine Type: Inboard

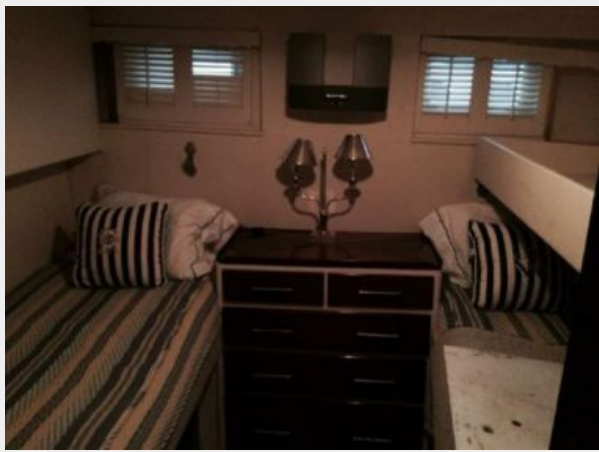
Fuel Type: Diesel

PHOTOS









CONTACTS

Andrey Shestakov, leading yacht broker of the sales department of Shestakov Yacht Sales Inc. Shestakov Yacht Sales Inc., the official representative of the Miami/Fort Lauderdale FL headquarters.

Contact details

Email: andrey@shestakovyachtsales.com

Web: shestakovyachtsales.com/en/

Telephones

USA: +1(954)274-4435

Office hours

Monday – Saturday: **9:00 - 21:00** EDT

Sunday: **closed**

Address



Harbour Towne Marina, 850 NE 3rd St,
STE 213, Dania, FL 33004