

## ARQUIMIDES — C&C YACHTS



**Builder:** C&C YACHTS

**LOA:** 95' 0" (28.96m)

**Year Built:** 2010

**Beam:** 21' 3" (6.48m)

**Model:** Motor Yacht

**Max Draft:** 7' 3" (2.21m)

**Price:** PRICE ON APPLICATION

**Location:** United States

Our experienced yacht broker, Andrey Shestakov, will help you choose and buy a yacht that best suits your needs **Arquimides — C&C YACHTS** from our catalogue. Presently, at Shestakov Yacht Sales Inc., we have a wide variety of yachts available on our sale's list. We also work in close contact with all the big yacht manufacturers from all over the world.

If you would like to buy a yacht **Arquimides — C&C YACHTS** or would like help answering any questions concerning purchasing, selling or chartering a yacht, please call **+1(954)274-4435**

---

# TABLE OF CONTENTS

---

TABLE OF CONTENTS	2
SPECIFICATIONS	3
Overview	3
Basic Information	3
Dimensions	3
Accommodations	4
Hull and Deck Information	4
Engine Information	4
DETAILED INFORMATION	5
Acommodations, Furnishing & Layout	5
Galley & Laundry	6
Electronics & Navigation Equipment	7
Electrical System	7
Deck Equipment	7
Flybridge	8
Mechanical Equipment & Engine Details	8
Disclaimer	9
Exclusions	9
Disclaimer	9
PHOTOS	10
CONTACTS	19
Contact details	19
Telephones	19
Office hours	19
Address	19

# SPECIFICATIONS

---

## Overview

---

Arquimides CNC 95' is a modern fiberglass semi-displacement yacht custom built in 2010. Characterized by topical and elegant lines, transom Stern, large continuous windows, metallic grey-bronze hull and Burma teak decks. Arquimides is outfitted with Caterpillar C32-1800 HP engines which at a cruise speed of 14 knots gives the possibility to range 780 nautical miles. For long range trips fuel consumption can be reduced and the cruising range can be doubled as long as speed is maintained under 12 knots. The maximum speed of Arquimides is 19 knots. The refined interior design has been planned by architecture studio Hot Lab in Milan with great detail and personality. The spacious interior offers scenic living, professional galley, luxury 5 star night area. Featuring four cabins accommodating eight guests and crew quarters for four. The large panoramic living area is furnished in a modern style and has custom wood cabinetry that give the area a rich feel alternating light surfaces, wood panels, metal elements and wenge parquet floors. The living area also features a day head accessible from the outside. The dining area located forward of the dinette features a large oval table signed by the designer Saarinen and Moroso seats and fully equipped with wine cellar. The master suite located amidship features king berth, ensuite head and portholes for natural illumination. The VIP Suite located forward features double berth. The guest suites located aft both features side-by-side double berths. All state rooms are equipped with SAT TV, DVD player and ensuite heads with mosaic designs and leather fittings. ARQUIMIDES, in a class of its own will surely draw the attention in any marina worldwide.

## Basic Information

---

**Category:** Motor Yacht

**Model Year:** 2010

**Year Built:** 2010

**Country:** United States

**Fly Bridge:** Yes

## Dimensions

---

**LOA:** 95' 0" (28.96m)

**Beam:** 21' 3" (6.48m)

**Max Draft:** 7' 3" (2.21m)

---

## Accommodations

---

**Total Cabins:** 4

---

## Hull and Deck Information

---

**Hull Material:** Fiberglass

---

## Engine Information

---

**Engines:** 2

**Manufacturer:** Caterpillar

**Model:** C-32

**Engine Type:** Inboard

**Fuel Type:** Diesel

---

# DETAILED INFORMATION

---

---

## Acommodations, Furnishing & Layout

---

- Number of owners & guest that can sleep in staterooms: 8
- Number of owner & guest staterooms on vessel: 4
- Master Stateroom is amidship has head and shower with king
- Guest Heads: 3
- Guest Showers: 3
- Additional Captain & Crew Berth 1
- Crew Head : 1
- Crew Shower: 1
- Separate Captain's Quarters
- Carpeting
- Cushions
- Linens

### ADDITIONAL LAYOUT DESCRIPTION:

#### Saloon:

- Custom wood Flooring
- Studio 1 interior design
- Custom L. shaped sofa
- Custom wood table
- Marantz Stereo system receiver
- Custom surround sound
- Custom Blinds
- 4G" LG LED slim TV
- KUH-SAT-TV
- Gaggenau / Refrigerator
- IPod convection
- Sony Blue Ray

#### Dinette:

- Custom wood flooring
- Custom dining room table
- Custom Chair
- 30 Bottle wine cooler

#### Master:

- Custom Decor
- 50" LG LED slim TV

- Stereo System
- King Berth
- SAT- TV

## VIP:

- Queen Berth
- Custom wood flooring
- SAT-TV
- Gigaset Phone

## Guest:

- Side by side Berths
- Custom wood Flooring
- SAT- TV
- Custom Head

## Guest:

- Side by side Berths
- Custom wood Flooring
- SAT- TV
- Custom Head

## Galley & Laundry

---

- Galley is up
- Clothes Washer
- Clothes Dryer
- Ice Maker ( Vitrifrigo)
- Refrigerator ( Gaggenau)
- Stove Burner LG (4)
- Water System: Pressure

## OTHER GALLEY &amp; LAUNDRY PARTICULARS:

- Custom Corian counter tops
- Custom stainless steel back splash
- Neff microwave
- Custom wood flooring
- Boiler system
- Gaggenau wine cooler

---

## Electronics & Navigation Equipment

---

- Auto Pilot ( Furuno Nav Pilot)
- VHF (Primary) Icom 604

### OTHER ELECTRONICS & NAVIGATION EQUIPMENT

- 2 Furuno Naunet V+2
- Furuno GPS
- Furuno 64NM Radar
- 4' open array
- Furuno wind FI 150

---

## Electrical System

---

- Battery
- Battery charger (Constavolt): Auto
- Dockside Electrical Cables
- Generator ( Primary): Kohler K.W 33 Hours:1790
- Generator ( Secondary): Kohler K.W 33 Hours: 1831

### OTHER ELECTRICAL SYSTEM DETAILS:

- Master volt. 100
- Master volt. 25 A
- Master volt 12/25-3
- Master volt. 24/ 50

---

## Deck Equipment

---

- Anchors with lines (2)
- Covers & Curtains: Bimini
- Coast Guard Approved Safety Package
- Deck Material
- Deck Wash Down System: Freshwater
- Fenders and Lines
- Navigation Lights
- Spreader Lights: Swim ( Boarding) Ladder
- Windshield Washers & Wipers

### OTHER DECK EQUIPMENT:

- (2) Maxwell 4500 windlass
- Bow sun pod

- Bow storage locker
- Arimar 12 Person Life Roft
- Sink
- Arpes BBQ
- EPIRB

## Flybridge

- Vitrifrigo ice maker
- Vitrifrigo refrigerator
- Besenzoni gangway
- Besenzoni swim ladder
- Besenzoni crane
- Stanley air compressor
- Besenzoni Galley Door

## Flybridge

---

- 6 JL Audic 8
- 2 10" subwoofer
- Icon 604 VHF
- Furuno FI-50
- Furuno NAV Pilot
- Garmin GPS
- Garmin depth sounder
- Rodriguez Bow Truster
- Cockpit
- 4 JL Audio 8 "
- Cockpit TV
- Toshiba 42" smart TV. LED
- Toshiba smart TV 50" Flybridge. LED

## Mechanical Equipment & Engine Details

---

- Air Conditioner (Dometic)
- Bilge Blowers (2): Bilge Pumps (4) and Auto
- Bow Thrusters: Rodriguez Group
- Controls: Cockpit, Tower
- Engine Alarm
- Emergency
- Fire Extinguisher system: Halon; Auto
- Fresh Water Cooling System



- Fuel Filters
- Fuel Shut Off Valve: Engines
- Head Types: Holding; Elec
- Lube Oil Storage & Transfer System
- Stabilizers: Rodriguez Group with zero speed
- Steering: Hydr
- Synchronizers
- Trim Tabs
- Transmissions: ZF
- Watermaker: Idromar capacity ( gals/day) 600

#### OTHER EQUIPMENT & ENGINE DETAILS:

- Dual Racor Filters

---

## Disclaimer

The Company offers the details of this vessel in good faith but cannot guarantee or warrant the accuracy of this information nor warrant the condition of the vessel. A buyer should instruct his agents, or his surveyors, to investigate such details as the buyer desires validated. This vessel is offered subject to prior sale, price change, or withdrawal without notice.

---

## Exclusions

Owner's personal belongings.

---

## Disclaimer

The Company offers the details of this vessel or yacht in good faith but cannot guarantee or warrant the accuracy of this information nor warrant the condition of the vessel. A buyer should instruct his representatives, agents, or his surveyors, to investigate such details as the buyer desires validated. This vessel or yacht is offered subject to prior sale, price change, or withdrawal without notice.

# PHOTOS





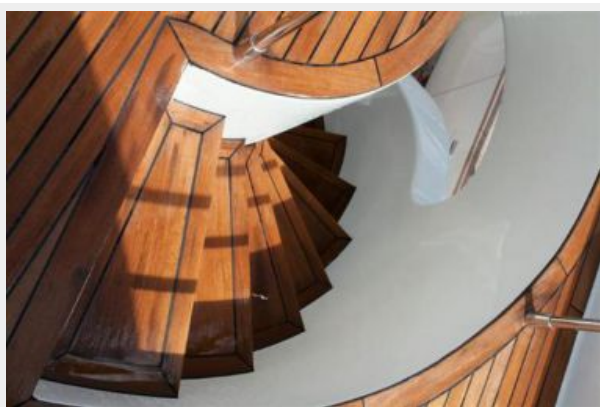
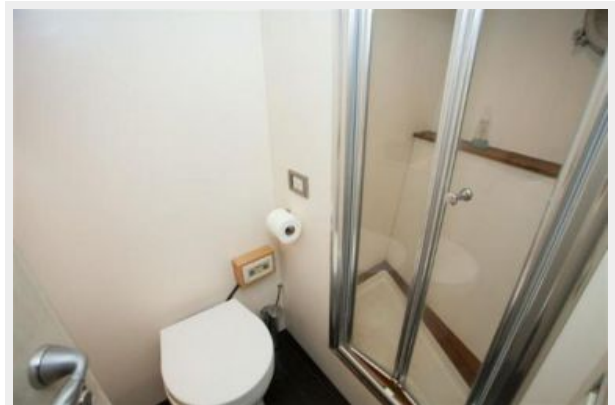




















# CONTACTS

---

Andrey Shestakov, leading yacht broker of the sales department of Shestakov Yacht Sales Inc. Shestakov Yacht Sales Inc., the official representative of the Miami/Fort Lauderdale FL headquarters.

## Contact details

---

Email: [andrey@shestakovyachtsales.com](mailto:andrey@shestakovyachtsales.com)

Web: [shestakovyachtsales.com/en/](http://shestakovyachtsales.com/en/)

## Telephones

---

USA: +1(954)274-4435

## Office hours

---

Monday – Saturday: **9:00 - 21:00** EDT

Sunday: **closed**

## Address

---



Harbour Towne Marina, 850 NE 3rd St,  
STE 213, Dania, FL 33004