

KING FISHER — ALBIN



Builder: ALBIN

Year Built: 2006

Model: Cruiser

Price: PRICE ON APPLICATION

Location: United States

LOA: 35' 0" (10.67m)

Beam: 12' 4" (3.76m)

Cruise Speed: 24 Kts. (28 MPH)

Max Speed: 30 Kts. (35 MPH)

Our experienced yacht broker, Andrey Shestakov, will help you choose and buy a yacht that best suits your needs **King Fisher — ALBIN** from our catalogue. Presently, at Shestakov Yacht Sales Inc., we have a wide variety of yachts available on our sale's list. We also work in close contact with all the big yacht manufacturers from all over the world.

If you would like to buy a yacht **King Fisher — ALBIN** or would like help answering any questions concerning purchasing, selling or chartering a yacht, please call **+1(954)274-4435**

TABLE OF CONTENTS

TABLE OF CONTENTS	2
SPECIFICATIONS	3
Overview	3
Basic Information	3
Dimensions	3
Speed, Capacities and Weight	3
Accommodations	3
Hull and Deck Information	4
Engine Information	4
PHOTOS	5
CONTACTS	14
Contact details	14
Telephones	14
Office hours	14
Address	14

SPECIFICATIONS

Overview

Very nicely cared for, original owner, low hours on twin Volvo D-6 diesels with Electronic Controls. High end finishings with a nice sized cockpit, Roomy and comfortable pilothouse and two staterooms below. Options include a Bow Thruster, Electric Anchor Windlass, Teak and Holly cabin sole, 2 zones of Heat/AC, Northern Lights diesel generator in a sound shield, wonderful AM/FM/CD/MP3 stereo with Xfinity Speakers, wired for HDTV. Very Roomy enclosed head with stand up shower (acrylic shower door) and Vac-U-Flush toilet. Epoxy Barrier coated bottom, davit for your dinghy.

Basic Information

Category: Cruiser

Model Year: 2006

Year Built: 2006

Country: United States

Dimensions

LOA: 35' 0" (10.67m)

LOD: 36' 11" (11.25m)

Beam: 12' 4" (3.76m)

MFG Length: 34' 11" (10.64m)

Speed, Capacities and Weight

Cruise Speed: 24 Kts. (28 MPH)

Max Speed: 30 Kts. (35 MPH)

Displacement: 18500 Pounds

Water Capacity: 160 Gallons

Fuel Capacity: 370 Gallons

Accommodations

Total Cabins: 2

Total Heads: 1

Hull and Deck Information

Hull Material: Fiberglass

Engine Information

Engines: 2

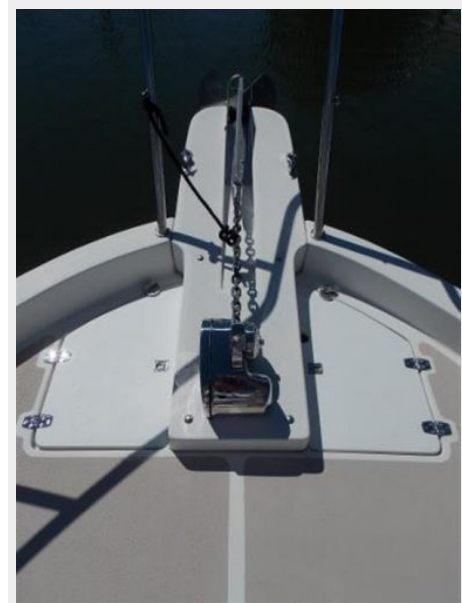
Manufacturer: Volvo

Model: D-6

Engine Type: Inboard

Fuel Type: Diesel

PHOTOS





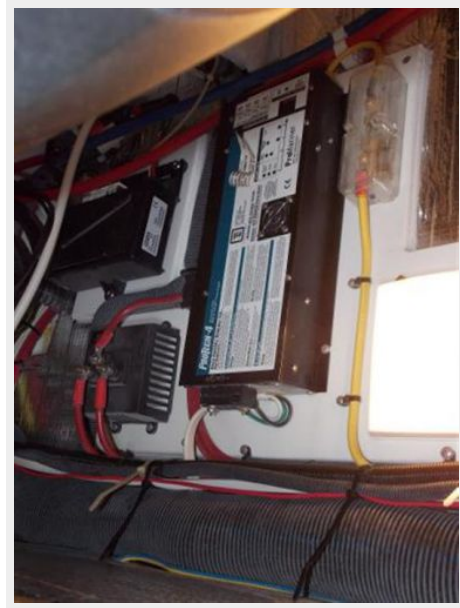


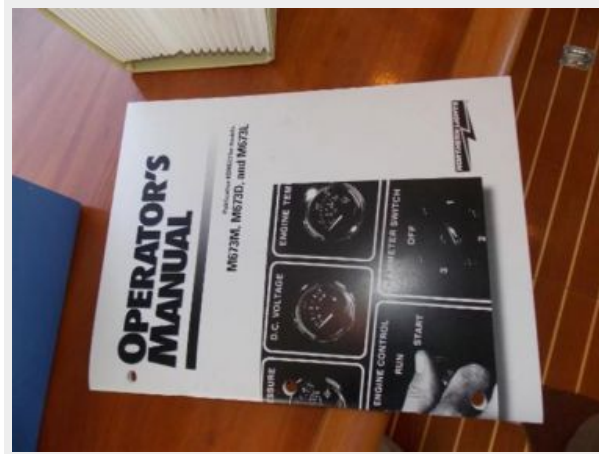












CONTACTS

Andrey Shestakov, leading yacht broker of the sales department of Shestakov Yacht Sales Inc. Shestakov Yacht Sales Inc., the official representative of the Miami/Fort Lauderdale FL headquarters.

Contact details

Email: andrey@shestakovyachtsales.com

Web: shestakovyachtsales.com/en/

Telephones

USA: +1(954)274-4435

Office hours

Monday – Saturday: **9:00 - 21:00** EDT

Sunday: **closed**

Address



Harbour Towne Marina, 850 NE 3rd St,
STE 213, Dania, FL 33004