

## 82 VIKING — VIKING



**Судостроитель:** [VIKING](#)

**Год постройки:** 2011

**Модель:** Катер для спортивной рыбалки

**Цена:** ЦЕНА ЯХТЫ ПО ЗАПРОСУ

**Местонахождение:** United States

**Длина общая:** 82' 0" (24.99m)

**Ширина:** 22' 4" (6.81m)

**Макс. осадка:** 5' 6" (1.68m)

Купить 82 Viking — VIKING а также выбрать подходящую вам яхту из нашего каталога яхт вам поможет опытный яхтенный брокер Андрей Шестаков. На сегодняшний день компания Shestakov Yacht Sales Inc. имеет большое количество яхт в собственном списке продаж, а также тесно сотрудничает со всеми крупными яхтенными производителями по всему миру.

Для того чтобы купить яхту 82 Viking — VIKING а также проконсультироваться по любому вопросу связанному с покупкой, продажей, чартером яхт позвоните по телефону **+7(918)465-66-44**.

# ОГЛАВЛЕНИЕ

ОГЛАВЛЕНИЕ	2
ХАРАКТЕРИСТИКИ	5
Основная информация	5
Размеры	5
Скорость, вместимость и масса	5
Размещение	5
Корпус и палуба	5
Информация о двигателе	6
ПОДРОБНОЕ ОПИСАНИЕ	7
Broker Remarks	7
Key Highlights	7
Decor	7
Salon	7
Galley & Dinette	8
Companionway	8
Salon Day Head - Starboard of Salon Entry	8
Master Stateroom - Midship	9
Master Head	9
VIP Stateroom, Forward	9
VIP Head	9
Guest Stateroom, Forward/Port	10
Guest Head, Port	10
Guest Stateroom, Starboard	10
Guest Head, Starboard	10
Crew Stateroom	11
Crew Head	11
Enclosed Flybridge	11
Electronics & Navigational Equipment	12

Cockpit	12
Engine Room & Mechanical Equipment	13
Hull	13
Deck / Exterior	14
Исключения	14
Отказ от ответственности	14
<b>ФОТОГРАФИИ</b>	<b>15</b>
Dinette	15
Salon	15
Salon	15
Salon	15
Salon	15
Galley	15
Galley	16
Dinette	16
Day Head	16
Laundry Center	16
Master Stateroom	16
Master Stateroom	16
Master Stateroom	17
Master Stateroom	17
Master Head	17
Master Stateroom	17
Master Head	18
VIP Stateroom, Forward	18
VIP Stateroom, Forward	18
VIP Stateroom, Forward	18
VIP Head	19
Guest Stateroom, Port	19

---

Guest Head, Port	19
Guest Stateroom, Starboard	19
Guest Head, Starboard	20
Flybridge Aft Deck	20
Flybridge Aft Deck	20
Flybridge Aft Deck	20
Flybridge Aft Deck	21
Enclosed Flybridge	21
Enclosed Flybridge	21
Enclosed Flybridge	21
Enclosed Flybridge	21
Enclosed Flybridge	21
Cockpit	22
Engine Room	22
Engine Room	22
Engine Room	22
Engine Room	22
Engine Room	22
82 Viking	23
Engine Room	23
82 Viking	23
<b>КОНТАКТЫ</b>	<b>24</b>
Контактная информация	24
Телефоны	24
Время работы	24
Адрес	24

# ХАРАКТЕРИСТИКИ

## Основная информация

**Тип судна:** Катер для спортивной рыбалки

**Модельный год:** 2012

**Год постройки:** 2011

**Страна:** United States

**Открытая палуба мостика:** Да

**Кубрик:** Да

## Размеры

**Длина общая:** 82' 0" (24.99m)

**Ширина:** 22' 4" (6.81m)

**Макс. осадка:** 5' 6" (1.68m)

## Скорость, вместимость и масса

**Вместимость воды:** 450 Gallons

**Вместимость сточного бака:** 280 Gallons

**Объем топливного бака:** 3750 Gallons

## Размещение

**Всего кают:** 5

**Всего ком. состава:** 6

## Корпус и палуба

**Материал корпуса:** Fiberglass

## Информация о двигателе

---

**Двигатели:** 2

**Производитель:** MTU

**Модель:** 16V2000

**Тип двигателя:** Inboard

**Тип топлива:** Diesel

---

# ПОДРОБНОЕ ОПИСАНИЕ

---

## Broker Remarks

---

With only 750 hours on MTU 16V2000 (2600 HP) with engine warranties, a custom teak cockpit, Faux teak transom & tow rail, See through transom live well, Recently upgraded interior, ice maker, water maker, Full Bausch Tower with full electronics, bow thruster and search light controls, AIS System, Hull paint job in awlgrip Stars & Stripes Blue in Spring of 2014, this 82 is a **MUST SEE!**

## Key Highlights

---

- New Tower Spring 2014
- New Hull Paint in Awlgrip Stars & Stripes Blue, Spring 2014
- New Faux transom, tow rail
- Custom teak cockpit
- MTU 16V2000 M94 2600HP with warranties
- Only 750 Hours
- Ultimate AME electronics package
- Custom interior
- Eskimo ice maker
- Watermaker
- Underwater lights
- Hydraulic riggers

## Decor

---

- Boat show accessory kit
- **Premier edition décor Upgrade**
- Sofa, upgrade style - Brisa Distressed Lass, top stitching, storage arm by door
- Wrapped hatch carpet installation
- Custom wall paper material
- Custom wall paper installation
- Custom headliner material throughout - Moccasin Chamois

## Salon

---

- Teak cabinetry with drawers
- Clear icemaker
- Full runner
- Overhead LED lights with dimmers

- Indirect rope lighting
- Teak entry from cockpit
- Mappa Burl cocktail table
- Home theater system with 55" LCD TV, with Bose LS 48 System with custom surround sound
- L- Shaped Lounge with rod storage underneath
- Sliding electric salon door
- Teak valences
- Main electrical panel

---

## Galley & Dinette

---

- Four-burner cooktop
- Storage cabinets and drawers
- Custom island with refrigeration and freezer, granite top
- (3) Bar stools
- Dinette couch with under cushion storage
- Mappa Burl dinette table with high gloss finish
- Garbage disposal in sink
- Dishwasher
- Microwave convection oven
- (4) Refrigerator and (2) freezer, sub-zero, large capacity under counter
- Trash compactor
- Custom flooring

---

## Companionway

---

- Laundry center with stackable washer and dryer behind teak door
- LED lighting overhead
- Access to bilge
- Central vacuum
- Linen closet
- Full runner
- Teak wall strips
- Electronic center to port

---

## Salon Day Head - Starboard of Salon Entry

---

- Custom Amtico flooring Sealand Vacuflush head system
- Granite vanity tops
- Decorative trim around mirror
- Custom Amtico flooring – black walnut with maple strip



---

## Master Stateroom - Midship

---

- King walk around fore and aft bed with underneath storage
- 46" LCD Flat screen TV
- L-Shaped sofa with storage on starboard side
- Upgraded mattress
- Full hanging locker
- Cabinet with drawers
- Teak end table
- Teak strips in ceiling
- Desk area with chair
- Custom sconces
- Custom fabrics
- Ensuite head
- Port lights, port and starboard

---

## Master Head

---

- Custom Amtico flooring - black walnut and maple
- Vanity top: Elegant Dune granite
- Teak face lower vanity
- Mirrored vanity
- Custom wallpaper
- Sealand head
- One piece shower door

---

## VIP Stateroom, Forward

---

- Centerline queen bed with upgraded mattress
- Full hanging locker
- Storage and drawer below bed
- Flat panel TV
- Teak storage cabinets outboard bed
- Overhead hatch
- Ensuite head

---

## VIP Head

---

- Mirrored ceiling
- Custom Amtico flooring: Black walnut with maple feature strip
- Vanity top: Symphony with Bullnose granite
- Overhead lights

- Sealand head
- Custom wallpaper
- One piece shower door

---

## Guest Stateroom, Forward/Port

---

- Queen size walk around with underneath storage
- 19" LCD Flat screen TV
- Central vacuum
- Teak storage cabinets
- Reading lights
- Upgraded mattress
- Hanging locker
- Teak valence
- Custom fabrics
- Ensuite head

---

## Guest Head, Port

---

- Mirrored ceiling
- Custom Amtico flooring: Black walnut with maple feature strip
- Vanity top: Symphony with Bullnose granite
- Sealand head
- Overhead lighting
- Custom wallpaper

---

## Guest Stateroom, Starboard

---

- Side by side beds
- Teak hanging locker
- Upgraded mattress
- Overhead hatch
- Teak valence
- Teak storage shelf
- Custom fabrics
- Reading lights
- LED overhead

---

## Guest Head, Starboard

---

- Mirrored ceiling

- Custom Amtico flooring: Black walnut with maple feature strip
- Vanity top: Symphony with Bullnose granite Sealand head
- Overhead lighting
- Custom wallpaper
- One piece shower door

---

## Crew Stateroom

---

- Small desk
- Overhead hatch
- Over/under bunks
- Hanging locker
- Storage drawer

---

## Crew Head

---

- Mirrored ceiling
- Custom Amtico flooring: Black walnut with maple feature strip
- Vanity top: Symphony with Bullnose granite
- Sealand head
- Overhead lighting
- Custom wallpaper

---

## Enclosed Flybridge

---

- Stidd Helm chair
- Port and starboard double pump seats
- Bow thruster
- Overhead lighting
- Overhead hatch
- Octoplex Touch screen system
- Air conditioning with reverse cycle heat, temperature control and dehumidification mode
- Teak cocktail table with fixed pedestal
- Interior staircase from salon to enclosed flybridge
- L-Shaped lounge on raised floor with underneath storage
- Pod style aft docking station with surface mounted controls and engine start/stop switch
- Sub-Zero deep drawer, under counter style refrigerator with teak faces, refrigerator/freezer
- 37" LCD Flat screen TV
- 12V Stereo with CD player

---

## Electronics & Navigational Equipment

---

- AIS System
- Furuno radar 6' array
- (2) Furuno NavNet plotter 3D processors; (1) to run in dual view mode to center and starboard, (1) to run in close mode to port display and salon
- Furuno Navnet 3D 72 mile radar
- Sirius Satellite weather
- Furuno NavNet 3D video sounder module
- Furuno/Airmar R-999 Variable frequency transducer
- Simrad autopilot AP2801
- Micro/Mid powertap Tee w/ 5M drop
- VHF Radio ICOM IC-M604
- Elbex camera system, interior and exterior
- Satellite TV KVH Tracvision HD7
- (3) Hi-Def Direct TV Receivers
- (4) Underwater lights
- Full Bausch Tower with full electronics, bow thruster, and search light controls

---

## Cockpit

---

- Teak deck
- Faux teak transom and tow rail
- (2) 100 Amp power cords
- Refrigerated drink step box
- Fresh water wash down
- Sea water wash down
- Y-Valve for fresh and salt water wash down
- Indirect rope lighting under coaming
- Lazarette hatch
- Observation mezzanine with port & starboard aft facing lounge seating, hinged seat with storage
- Recessed refrigerated chill box under mounted in mezzanine step
- Rupp Rod holders
- Transom swim steps at transom door
- Transom mounted fish box with drain
- Walk through transom door with lift gate
- See thru transom live well
- Eskimo Icemaker
- Tackle drawer
- Teak mezzanine table

---

## Engine Room & Mechanical Equipment

---

- Upgraded MTU 16V-2000; M94 2600HP with 750 hours
- Engine Warranties
- (2) 32kw Onan QD Diesel generators with 500 hours
- (2) 4-Drawer 16" wide tool boxes, painted white
- All brass thru-hulls and sea strainers painted with Awlgrip
- Fuel filter painted snow white
- All pumps painted snow white
- Line run from oil change system to cockpit dockside box
- 110v Outlet on aft bulkhead
- 1400 GPD Watermaker with auto backflush
- Dockside water hook up for water maker with extra large filters
- (2) 5-Ton Chilled water air conditioners with reverse cycle heat
- Clear acrylic shaft log access covers
- Generator fuel water separator for both generators
- Charles autophase c-power shore power transformer
- Back up pump for sea water system plumbed in parallel
- Dedicated freshwater pump for all exterior wash downs
- Bilge pumps with clean out pumps in keel linked to monitoring system
- Delta T Ventilation system
- Delta T pneumatically controlled ventilation dampers tied to fire suppression
- AC and DC lighting
- Fuel priming pumps for main engines
- Fuel transfer management system
- Oil change system with line run to cockpit box
- Fuel priming pumps for main engines, 24V
- Racor fuel/water Separator filters for main engines and generator
- Trim tabs
- Mufflers – generators, underwater gas/water separators

---

## Hull

---

- Awlgrip Stars & Stripes Blue hull paint, Spring 2014
- Hydraulic bow thruster
- Fiberglass side thru-hulls
- Prop pockets to reduce draft
- Underwater exhaust system
- Recessed trim tab covers
- Additional fuel tank forward for a total of (4) tanks
- Rub rail painted white
- Overboard discharges for all heads
- All bilges painted with awlgrip

- Magnet switches for all bilge lights
- Fender rails
- VIPER Steering system

---

## Deck / Exterior

---

- Freshwater wash down at bow inside anchor locker
- Stainless steel gas springs for anchor locker hatch
- Deck fill for fresh water tank
- Bow pulpit
- Bow rail
- Hydraulic windlass
- Forward window mask

---

## Исключения

---

При продаже яхты исключаются личные вещи владельца.

---

## Отказ от ответственности

---

Компания предоставляет описание судна или яхты добросовестно, но не может гарантировать точность этой информации, а также не ручается за техническое состояние. Покупатель должен проинструктировать своих агентов или оценщиков исследовать представленную информацию более подробно, по собственному желанию. Продажа судна или яхты, изменение цены или снятие с продажи будет происходить без предварительного уведомления.

# ФОТОГРАФИИ

**Dinette**



**Salon**



**Salon**



**Salon**



**Salon**



**Galley**





**Galley**



**Dinette**



**Day Head**



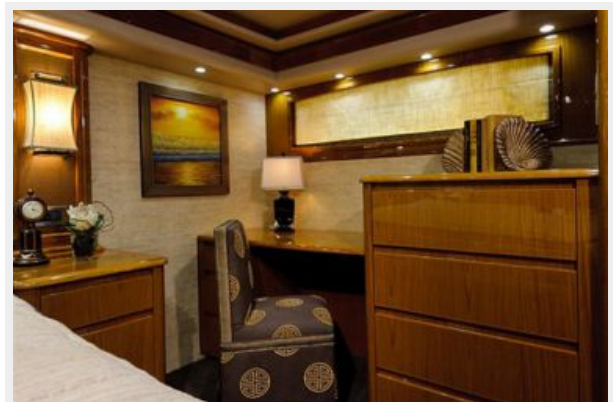
**Laundry Center**



**Master Stateroom**



**Master Stateroom**





**Master Stateroom**



**Master Stateroom**



**Master Stateroom**



**Master Head**



**Master Head**



**VIP Stateroom, Forward**



**VIP Stateroom, Forward**



**VIP Stateroom, Forward**



**VIP Head**



**Guest Stateroom, Port**



**Guest Head, Port**



**Guest Stateroom, Starboard**





**Guest Head, Starboard**



**Flybridge Aft Deck**



**Flybridge Aft Deck**



**Flybridge Aft Deck**



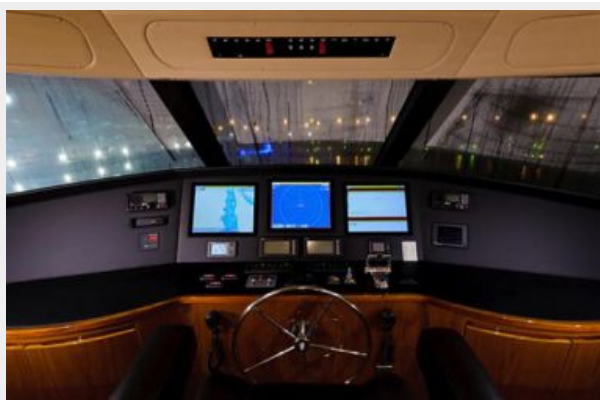
**Flybridge Aft Deck**



**Enclosed Flybridge**



**Enclosed Flybridge**



**Enclosed Flybridge**



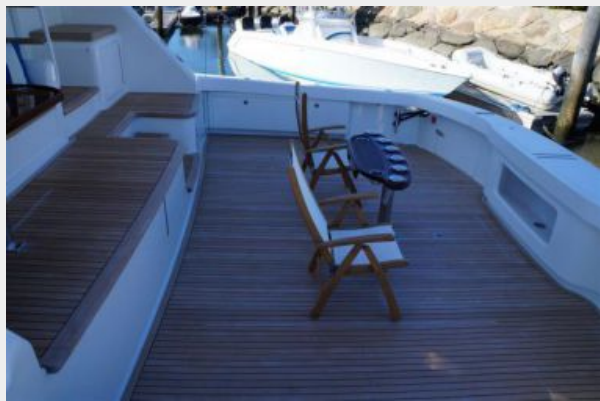
**Enclosed Flybridge**



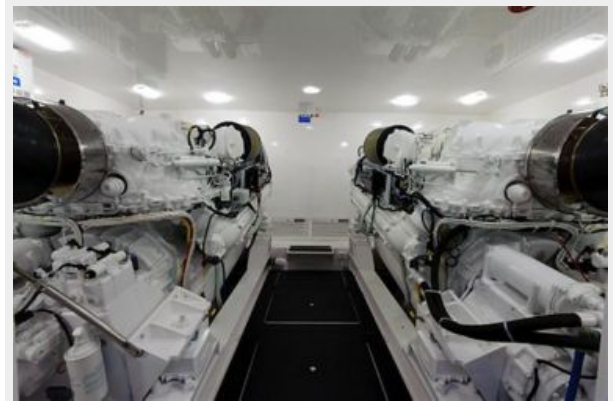
**Enclosed Flybridge**



**Cockpit**



**Engine Room**



**Engine Room**



**Engine Room**



**Engine Room**



**Engine Room**





**Engine Room**



**82 Viking**



**82 Viking**



# КОНТАКТЫ

---

Андрей Шестаков (Andrey Shestakov) – ведущий яхтенный брокер отдела продаж яхт и судов компании Shestakov Yacht Sales Inc. Официальный представитель Shestakov Yacht Sales Inc. для русскоговорящих клиентов в центральном офисе компании в Майами/Форт Лодердейл/Флорида/США.

## Контактная информация

---

Email: [andrey@shestakovyachtsales.com](mailto:andrey@shestakovyachtsales.com)

Web: [shestakovyachtsales.com](http://shestakovyachtsales.com)

## Телефоны

---

Краснодарский край: **+7(918)465-66-44**

США, Майами, Флорида: **+1(954)274-4435**

## Время работы

---

Понедельник – Суббота: **9:00 - 21:00**  
EDT

Воскресенье: **Закрето**

## Адрес

---



Harbour Towne Marina, 850 NE 3rd St,  
STE 213, Dania, FL 33004