

TRANQUILLITY — NEPTUNUS



Builder: NEPTUNUS

Year Built: 2007

Model: Motor Yacht

Price: PRICE ON APPLICATION

Location: United States

LOA: 62' 0" (18.90m)

Beam: 16' 8" (5.08m)

Min Draft: 5' 0" (1.52m)

Max Draft: 5' 3" (1.60m)

Cruise Speed: 28 Kts. (32 MPH)

Max Speed: 33 Kts. (38 MPH)

Our experienced yacht broker, Andrey Shestakov, will help you choose and buy a yacht that best suits your needs **TRANQUILLITY — NEPTUNUS** from our catalogue. Presently, at Shestakov Yacht Sales Inc., we have a wide variety of yachts available on our sale's list. We also work in close contact with all the big yacht manufacturers from all over the world.

If you would like to buy a yacht **TRANQUILLITY — NEPTUNUS** or would like help answering any questions concerning purchasing, selling or chartering a yacht, please call **+1(954)274-4435**

TABLE OF CONTENTS

TABLE OF CONTENTS	2
SPECIFICATIONS	6
Basic Information	6
Dimensions	6
Speed, Capacities and Weight	6
Accommodations	7
Hull and Deck Information	7
Engine Information	7
DETAILED INFORMATION	8
Vessel Walkthrough	8
Salon	8
Galley	9
Lower Station, Forward to port, includes:	9
Dining Area	10
Companionway	10
Master Cabin	10
Master Head	11
Starboard Side Guest Cabin	11
Guest Head	11
VIP Cabin	12
Forward Deck	12
Aft Deck	13
Crew Cabin	13
Flybridge	14
Flybridge Navigation Equipment	14
Engine Room	14
Electrical	15
Construction Details	15

Remarks	16
Exclusions	16
Disclaimer	16
Exclusions	16
Disclaimer	16
PHOTOS	17
Salon Looking Forward	17
Salon Looking to Port	17
Salon Looking to Starboard	17
Salon Looking Aft	17
Galley Looking Aft	17
Galley Looking Starboard	17
Galley Looking Aft	18
Full Size Fridge & Oven	18
Galley to Port	18
Inside Helm	18
Dinette to Starboard	18
Companionway Electrical Panel	18
Companionway Laundry	19
Companionway Looking Forward	19
Master Looking Aft	19
Master Looking to Port	19
Master Looking to Starboard	19
Master Looking Forward	19
Master Head	20
Starboard Guest Cabin	20
Portside Guest Head	20
Starboard Guest Cabin	20
Portside Guest Head	21

VIP	21
VIP	21
Foredeck	21
Sun Lounge Area	21
Foredeck	21
Side Decks	22
Windlass Detail	22
Aft Deck to Port	22
Aft Deck to Starboard	22
Aft Deck	22
Aft Deck	22
Aft Deck Grill	23
Crew Looking Forward	23
Crew Looking to Port	23
Crew Looking to Starboard	23
Flybridge Access	23
Flybridge Looking Aft	23
Flybridge Looking Aft	24
Flybridge Looking Forward	24
Flybridge Bar	24
Flybridge Companion Seat	24
Flybridge Looking Starboard	24
Flybridge Looking Aft from Sun Lounge	24
Flybridge Looking Aft from Helm	25
Helm	25
Helm	25
Sun Lounge Forward of Helm	25
Engine Room Looking Forward	25
Starboard Engine	25

Port Engine	26
Engine Room Looking Aft	26
Generator	26
Chilled Water AC	26
Alternate Profile	26
Alternate Profile	26
Side View	27
Transom	27
Side View	27
Alternate Profile	27
Alternate Profile	27
CONTACTS	28
Contact details	28
Telephones	28
Office hours	28
Address	28

SPECIFICATIONS

Basic Information

Category: Motor Yacht

Sub Category: Flybridge with Euro Transom

Model Year: 2008

Year Built: 2007

Country: United States

Vessel Top: Bimini Top

Fly Bridge: Yes

Dimensions

LOA: 62' 0" (18.90m)

LWL: 59' 0" (17.98m)

LOD: 62' 0" (18.90m)

Beam: 16' 8" (5.08m)

Min Draft: 5' 0" (1.52m)

Max Draft: 5' 3" (1.60m)

MFG Length: 65' 8" (20.02m)

Speed, Capacities and Weight

Cruise Speed: 28 Kts. (32 MPH)

Cruise Speed RPM: 2000 Kts.

Cruise Speed Range: 350

Max Speed: 33 Kts. (38 MPH)

Max Speed RPM: 2300 Kts.

Displacement: 68000 Pounds

Gross Tonnage: 34 Pounds

Water Capacity: 230 Gallons

Holding Tank: 130 Gallons

Fuel Capacity: 1050 Gallons

Accommodations

Total Cabins: 3	Total Berths: 3
Sleeps: 6	Total Heads: 3
Crew Cabin: 1	Crew Berths: 1

Hull and Deck Information

Hull Material: Fiberglass	Deck Material: Teak
Hull Configuration: Modified Deep Vee	Hull Designer: Tony Castro
Exterior Designer: Tony Castro	Interior Designer: Neptunus Yachts

Engine Information

Engines: 2	Manufacturer: MTU
Model: 8V200CR	Engine Type: Inboard
Fuel Type: Diesel	

DETAILED INFORMATION

Vessel Walkthrough

TRANQUILLITY is a Euro Style Sedan Motoryacht with a decidedly North American flair. Her interior is graced with a natural cherry joinery with a high gloss finish. TRANQUILLITY was custom built, has countless improvements not the least of which is her 1200 HP engines!

Boarding TRANQUILLITY is from either the swim platform and up the port or starboard steps or from either the port or starboard Aft Deck.

TRANQUILLITY has a comfortable Aft Deck with built in and loose seating, same level Salon with loose and built in furniture, a raised Galley and Dinette Area with the optional mini Lower Station.

Below are three cabins with the forward VIP and Starboard twin bed Guest Cabin sharing a portside Head and the Master on centerline with a private head and shower.

The Engine Room is accessed via a hatch in the Aft Deck sole. The large Lazarette is easily accessed via a custom transom door from the swim platform and has been optionally fitted out as a comfortable Crew Cabin.

The Flybridge Deck has easy access via comfortable stairs from the Aft Deck. The Bimini top is new 9/14 and the signature open air Sun Lounge ahead of the Helm create seating areas found only on the popular Neptunus 56/62 series of Sport Motoryachts. Further features of the Flybridge include a bar, dinette seating and a crane of the Aft Bridge Deck for a scooter if so desired.

Salon

The Salon is entered via the curved sliding Trend stainless steel entry door. The rich look of the cherry hardwood sole and high gloss cherry contrasts nicely with the camel colored ostrich embossed leather sofa to starboard. The sofa is C shaped and has storage and rope lights below. It provides seating for at least five people with its extended aft section.

A custom burlwood topped cherry coffee table with two storage drawers lies in front. The forward end of the sofa terminates into a built in end table with two storage cabinet doors below.

To port starting aft are two full size upholstered chairs separated by a cherry wood bar cabinet with a pullout liquor drawer and a burlwood top with a Lucite table lamp.

Next forward is a curved cabinet housing a built in 37" Sharp Aquos LCD TV with four storage cabinets below.

At time of build the entertainment electronics were relocated forward into a cabinet that allows easier access.

This cabinet houses a Bose Lifestyle 38 AM/FM/CD/DVD player with hard drive storage, a Direct TV receiver, the KVH service port and the attenuator for the Glomex Terrestrial TV antenna. Two black mica storage drawers are below and are behind a curved cherry door.

Also in the Salon are full drapes and a sliding insect screen on the aft door, twin square columns with sconce lights, a decorative ceiling treatment over the coffee table, a Bose five channel speaker system with a hidden subwoofer, eight halogen mini spots on a dimmer, digital AC controls and an additional storage cabinet facing aft from the Galley.

The signature two level Salon windows are covered with lined drapes.

Of special note is a 16,000 BTU self contained AC unit installed in the Salon at time of build.

Galley

The Galley is open to and two steps up from the Salon. The sole is planked cherry to match the Salon. The customized Galley of TRANQUILLITY is full beam with a small Lower Station to port. A large Dinette is to starboard. The Dinette seats at least four people with a light tan Ultra leather seating surface.

Equipment includes:

Under mount extra deep stainless steel sink Single handle spray faucet Separate drinking water tap Insinkerator stainless steel disposal GE 4 Burner Ceran top cook top Built in GE Profile Spacemaker XL 1800 microwave/convection oven w/exhaust fan & work light above the cook top GE Profile stainless steel self cleaning full size oven below cook top Sub Zero full size standup 200TC stainless steel refrigerator w/(2) freezer drawers (11) Cherry cabinet doors One corner storage cabinet (3) Cherry drawers Large cabinets w/(3) pullout storage drawers to port behind a clear door Corian countertop with Sea Rail Central vacuum outlet Lucite liquor bottle storage Overhead four door mirrored glass cabinet w/dedicated lighting to port (15) Halogen mini spots – most on a dimmer U Line under counter drink refrigerator w/icemaker located to port behind a cherry door (4) Mica drawers to port behind a cherry door (3) Port & (3) starboard opening windows that slide downward for cross ventilation (\$3800.00 option) 20" Sharp Aquos LCD TV facing Dinette

Lower Station, Forward to port, includes:

Tilt cherry wood helm wheel MTU electronic single lever controls Vetus integrated bow & stern thruster control (2) MTU/LCD engine gauge/monitors (2) Wema analog fuel tank gauges Bennett trim tab controls & LED indicators & auto retract function Fireby engine shutdown override panel Icom M-504 VHF w/DSC Northstar 6000 I 10.5 plotter /depth Simrad AP16 autopilot control head

Raymarine ST60 Tridata depth/speed/log 12 Volt accessory outlet ITT Jabsco searchlight controls 4 Point bilge pump monitor panel w/audio visual alarm Start/stop batteries Wiper controls Horn button Windshield defogger control Profile Graphic panel w/power supply LED indicators (2) Storage cabinets below helm Peterson upholstered swivel helm seat Postable cherry footrest

Dining Area

All the way forward is an Ultra Leather upholstered Dinette to seat four to five people with storage below. A fixed burlwood top dining table sits on a riser along with the Dinette to offer better exterior visibility.

Above are three dedicated halogen mini spots.

Companionway

Six curved steps each with an LED step light and lead to below. Along the way in a customized two door electrical panel with a separate AC/DC electrical panel.

At the bottom of the stairs one can go aft and down two more steps to the Master Cabin furthest aft or up one step to the centerline Companionway with the Guest Cabin to starboard, Laundry Center with a Whirlpool stacked washer/dryer behind cherry doors and Guest Head to port or the entrance to the forward most VIP Cabin. A skylight above offers excellent daytime lighting.

A custom large cedar lined locker just outside the Master Cabin offers excellent additional storage.

Master Cabin

The Master Cabin is next aft. A tapered queen size berth on centerline has two storage drawers and rope lighting below and an upholstered headboard and a curved cherry and vinyl soffit above. Two halogen reading lights are in the soffit.

Built in two drawer cherry nightstands with mirrored panels and small chrome reading lamps above flank the berth. To port is a built in chest with ten drawers. To starboard are seven drawers and a built in upholstered seat most forward. Above the drawers are three port and three starboard large deadlights covered with shades and drapes. These new style deadlights become available in the 2007 model.

Forward on the portside is a double door, cedar lined auto lit hanging locker with an Audiovox DC DVD player and a Direct TV receiver wired to the cabin's TV.

The Aquos 32" LCD TV is built in the forward bulkhead on the portside of the centerline arched

entry door. Below is a functional vanity or desk with a stool, two drawers and a mirror. To starboard is the entrance to the cabin's private Head and upper and lower two door corner cabinet facing aft.

Also in the cabin are battery shutoff switches, a CO detector, a digital safe under the seat, Clarion stereo speakers and a Clarion AM/FM/CD stereo, digital AC control and sixteen halogen mini spots, most on a dimmer.

Master Head

The en suite Master Head has a Crema Marafil marble tile sole, a bow front cherry vanity with a storage cabinet below and a China under mount sink in a Corian countertop above. There are four mirrored medicine cabinets above the sink with a fixed dead light above covered with a pleated shade.

The stall shower has a clear glass door, a seat, a shelf, a handheld or wall mountable shower fixture, a light and an exhaust fan.

The toilet is a freshwater flush Raritan Atlantis elongated bowl model. The overhead is mirrored with three halogen lights above and entry is via an arched hinged cherry entry door.

Starboard Side Guest Cabin

Entered from the forward end of the cabin are two single berths each with three drawers (one large, two small) below.

Between is a cherry three drawer nightstand with AC delivery above. Outboard the starboard berth is a cherry shelf to serve as a nightstand. Two fixed dead lights with drapes are above with a reading light in a soffit above for each berth. At the foot of the berth is a cedar lined hanging locker.

Also in this cabin is a central vacuum outlet, four overhead dimmable halogen mini spots, two halogen mini spots as reading lights, digital AC controls, a dressing mirror on the reverse of the arched entry door and a carpeted sole.

Guest Head

The Forward Guest Head is shared by the VIP and Guest Cabins with two entry doors, one to the main Companionway and other direct to the VIP Cabin.

The sole is Crema Marafil Granite tile. The toilet is a freshwater flush full size Raritan Atlantis model. The bow front cherry vanity has one cabinet below and a Corian countertop with a China under mount sink above.

Above the sink is a pleated shade covering a fixed dead light. Three mirrored medicine cabinet doors are above with rope lighting below the valance.

The shower has a clear glass door, a handheld or wall mountable fixture, a Corian shelf and a wallpaper like Mica finish on the bulkheads that is as elegant as it is practical.

Also in the shower is a light and an exhaust fan. The Head also has three halogen mini spots above in a mirrored overhead.

A custom corner cabinet above the toilet offers additional storage.

VIP Cabin

The VIP Cabin is entered via an arched cherry door. The queen size berth sits on centerline with an upholstered headboard off the forward bulkhead. Twin halogen reading lights are above.

Two large cherry storage drawers lie at the foot of the berth. There is rope lighting around the cherry keeper for the custom Innerspring mattress. Built in cherry countertops both port and starboard serve as nightstands. Above is one fixed dead light with drapes to both port and starboard. Above the shades on either side are four cherry storage cabinets to supplement the cabin's abundant storage. Furthest forward are small sconce accent lights.

Aft to port is a cedar lined double door hanging locker and access the Forward Head.

To starboard is a matching double door cedar lined hanging locker with a 12 volt Clarion AM/FM/CD stereo player within.

On the aft bulkhead are three cherry drawers with a cherry counter above. Above this is a built in Samsung 15" LCD TV and a full height dressing mirror. The sole has access to the forward bilge and bow thruster.

Under the berth are two Clarion speakers and the disconnect switch for the bow thruster. Overhead are five halogen mini spots on a dimmer and a Bomar deck hatch with an Ocean Air sliding screen and shade.

Also in this cabin are digital AC controls and a CO monitor.

Forward Deck

Heavy Duty stainless steel bow rails w/welded stainless steel lifeline Stainless steel anchor pulpit w/bow roller 66 lb. Delta stainless steel anchor Maxwell 3500 VW Windlass w/150' high tensile chain Up & down foot switches for windlass Round Bomar hatch to access chain locker Freshwater wash down in bow anchor locker Heavy duty rub rail Dual spring line cleats International navigation lights Air horn Dual deck fills for fuel port & starboard allows single side filling Removable stainless steel burgee pole Stainless steel hand rails at bow cushion area Off

white Textulene wrap around windshield cover incl. port & starboard side windows, new Oct 2014 Frameless cabin side windows Stainless steel sliding boarding gates port & starboard midship Raised fiberglass toe rail for safety Round Bomar deck hatch into VIP Cabin House side stainless steel handrails (6) Large dead lights into Master Cabin (2) Teak Tread steps to side deck port & starboard w/step lights Hailer horn (2) Windshield wipers & washers ITT spotlight, remote controlled

Aft Deck

Teak sole over fiberglass decks Covered stern cleats w/fairleads Built in fiberglass stairs (7) to Flybridge w/teak treads w/LED step lights (2) Hinged stainless steel gates to swim platform Custom high gloss cherry table w/stainless steel pedestals & cover (3) Teak folding deck chairs Covered Aft Deck fully covered by Flybridge deck above (5) Stainless steel DC lights in Aft Deck overhead Built in Aft Deck seating for four w/removable cushions & cover Wet bar w/sink & Corian countertop Miele electric BBQ grill to port under a hinged lid Locker for storage under bar TV inlet w/cord Telephone inlet w/cord 750 lb. Capacity hydraulically operated swim platform for tender storage Huge full beam Lazarette w/5' of headroom configured as a Crew Cabin Bose stereo speakers Pressure water inlet Deck waste pump out plate Hot & cold shower in custom cabinet to starboard (2) Stainless steel support poles to Boat Deck Aft Deck camera Custom watertight entry door from swim platform into Crew Cabin (\$9200.00) Stainless steel porthole on port & starboard side of Aft Deck seat into Lazarette Freshwater wash down (3) Underwater lights (2) Custom lockers in transom pylasters Custom storage under Flybridge steps Curved Trend stainless steel trimmed entry doors 110V GFCI outlet at swim platform for tender battery charger

Crew Cabin

The Lazarette area of TRANQUILLITY is finished off as a proper Crew Cabin. Entrance is via the watertight door on the stern platform. This was a \$30,000 option when new.

Two steps down is a small area with 6'4" headroom. In this area is a vanity with a stainless steel sink, a mirror, two cabinet drawers below and an opening stainless steel porthole on the portside.

The berth has three drawers and a cabinet below. At the foot of the berth is a cabinet with three additional drawers. Further outboard is a Raritan Atlantis head and a Vizio 26" LCD TV above.

There is a stall shower with 6'2" headroom, a seat, a handheld or wall mountable fixture, a light, an exhaust fan and a clear Lexan door.

Also in this cabin are seven halogen mini spots, a stern thruster, Danby refrigerator, an Emerson microwave, Clarion stereo with speakers, a 12 volt electrical panel and a CO detector. Built in and not easily seen is the steering gear and twin Charles Iso transformers, both with boost capability.

Flybridge

The Flybridge of TRANQUILLITY was designed with open air cruising in mind. The owner custom ordered a soft top allowing full sun when desired.

Access is via teak steps to starboard. A small fold down panel gives easy access to the aft area of the Flybridge seating. The sole of the forward area under the Bimini top is teak.

J shaped seating is aft and to port. Six people are accommodated comfortably. A varnished teak table on twin polished stainless steel pedestals offers alfresco dining.

A large bar with Corian top is next forward. There is a stainless steel under mount sink with cover, a removable ice bucket with cover, two storage cabinets and a bank of drawers below.

The entire bridge is covered with a new (October 2014) white Bimini top.

Another bar area with a (new Oct 2014) Norcold refrigerator and additional storage is to starboard.

Bridge Equipment includes:

Fiberglass radar arch (4) Clarion Two Stage speakers A Marquipt 600 lb. davit aft of the seating
A stainless and life line railing aft of the davit Removable stainless steel flag pole w/cover 2
Down light in the arch 4' Furuno open array radar KVH Tracvison 4 sat dome Black & tinted Plexi
Venturi windscreen EPIRB Neptunus Signature sun lounge forward of helm on Flybridge
w/removable cushions & cover Twin upholstered two person helm chairs w/fold down footrests
Covers for all Flybridge seating Clarion DCZ 625 CD changer in port bar unit GFCI outlet at aft
davit for battery charger hookup

Flybridge Navigation Equipment

(2) MTU LCD gauge panels for main engines (2) MTU electronic clutch & throttle controls
Northstar 6100i 12" DGPS plotter /sounder/Sirius weather Furuno Navnet II 10.1" plotter/radar
Furuno 6 KW 4' array radar scanner Ritchie 5" Powerdamp compass Simrad AP 25 autopilot
head Raymarine ST60 digital depth gauge Raymarine ST60 digital speed log (2) Electric fuel
gauges ITT Jabsco searchlight controls Vetus bow & stern thruster controls (15 hp) (dual
controls) Bennett trim tab controls w/indicators Icom IC-M504 VHF radio w/DSC Bilge pump
controls w/(3) digital pump readouts Teleflex tilting helm wheel w/cover Fireboy fire system
override controls Windlass controls 12V DC outlet Icom remote VHF speaker Clarion CMD6
AM/FM/CD stereo Generator on indicator lights Burlwood dash panels Portside start/stop
controls, engine controls as wing controls Bow & stern thruster control Helm cover Power Max
DA-4000 SBR cell phone booster

Engine Room

Twin MTU 8V2000 1200 hp diesel engines Anti vibration mounts for engines & generators 15 hp Vetus 24 volt DC electric bow thruster 10 hp Vetus 24 volt DC electric stern thruster (4) Automatic/manual bilge pumps w/"Ultra" bilge pump switches Head Hunter DC freshwater pump A.O. Smith 30 Gallon water heater (4) Fluorescent Engine Room lights 110V GFCI outlet (2) 110V Engine Room fans FRP flooring between engines 3" Aquamet 22 stainless steel shafts Dripless shaft seals Site tubes for both fuel tanks (2) Engine Room blowers 2" Heavy duty insulation material covered w/white aluminum perforated paneling Oil Exchanger oil change system for engines, transmissions & generator 30 lb. Fireboy automatic fire suppression system Air filters on Engine Room air intakes Jabsco Vane Puppy fuel transfer pump Centrek Industries gas/water separator for generator exhaust Teleflex power steering system w/dual pumps, one off each transmission Marine Air 72,000 BTU chilled water air conditioning w/(5) air handlers & (3) compressors for variable command Dual Racor 1000 FG fuel filters w/vacuum gauges for main engines (1) Racor 500 filter for generator 6 Step stainless steel & teak ladder to Engine Room from Aft Deck (2) Engine block heaters ZF 550A Transmissions w/1.97:1 reduction Airsep crankcase ventilation system 422 Gallon aluminum forward fuel tank 683 Gallon aluminum aft fuel tank Site gauges for both fuel tanks Oversize Groco sea strainer & sea valves for main engines (2) Aluminum baffled water tanks (1) Aluminum baffled waste tank Central vacuum system 24 Volt freshwater pump Macerator pump for waste tank w/timer switch Fiberglass wrapped single tube exhaust system (4) Step vertical boarding ladder stored in Engine Room

Electrical

110V/220V 60 Hz AC system 12V/24V DC system 23 kW Kohler generator in sound shield w/430.9 hours (3) Banks of 12 volt gel cell batteries separated by blocking diodes as follows: (2) 8D's (450 ah) for house 12V, (2) 4D's (360 ah) for engine starting 24V plus (2) 12 volt batteries for bow & stern thruster (24V system) DC Digital voltmeter DC Digital amp meter AC Digital voltmeter w/dual positions to read each leg of power AC Digital amp meter w/dual positions to read each leg of power (20) Breaker protected 110 volt AC circuits (10) Breaker protected 220 volt AC circuits (44) Breaker protected DC circuits Central bonding system w/shaft brushes Promariner 30 amp 24 volt battery charger (2) 50 amp Glendinning cord reels w/75' of cord each Generator "on" indicator light at Flybridge Helm (5) Battery shutoff switches (2) Galvanic isolators Port engine alternator 85 amps, 28V Starboard engine alternator 135 amps, 14V (3) Gang centrally located GFCI's at main bus (2) Charles Smart Boost 15 KVA transformers Generator start/stop at main electrical panel Water tank level indicator at main electrical panel Waste tank level indicator at main electrical panel Separate battery for generator starting w/dedicated 10 amp charger

Construction Details

The boat is a composite construction using Kevlar Hybrid materials for superior strength and puncture resistance. Six longitudinal foam stringers and 20 transverse foam stringers enclosed with stitched woven roving, reinforce the entire hull bottom. The hull sides above the waterline are cored. The engine stringers run from stern to bow with steel top plates for engine mounting.

The Deep (19.5 degrees) Vee Hull has been designed to ensure a vessel with excellent sea keep qualities. Special attention has been given to a ratio between installed power, speed and fuel consumption. Two layers of Interlux 2000E primer beneath the bottom paint.

Remarks

TRANQUILLITY has had only one knowledgeable owner who custom ordered the boat with pages of small not so small upgrades, the higher HP MTU's being the most notable! Surely the fastest 62' Neptunus built and maintained professionally to be ready to go!

Emptied of personal belongings and very seriously for sale. Actual LOA is 65'4".

Exclusions

While every effort was made to list all pertinent included equipment aboard TRANQUILLITY, there are some personal belongings aboard. Prospective purchasers should assume any item not specifically mentioned herein will not convey at closing.

Disclaimer

The Company offers the details of this vessel in good faith but cannot guarantee or warrant the accuracy of this information nor warrant the condition of the vessel. A buyer should instruct his agents, or his surveyors, to investigate such details as the buyer desires validated. This vessel is offered subject to prior sale, price change, or withdrawal without notice.

Exclusions

Owner's personal belongings.

Disclaimer

The Company offers the details of this vessel or yacht in good faith but cannot guarantee or warrant the accuracy of this information nor warrant the condition of the vessel. A buyer should instruct his representatives, agents, or his surveyors, to investigate such details as the buyer desires validated. This vessel or yacht is offered subject to prior sale, price change, or withdrawal without notice.

PHOTOS

Salon Looking Forward



Salon Looking to Port



Salon Looking to Starboard



Salon Looking Aft



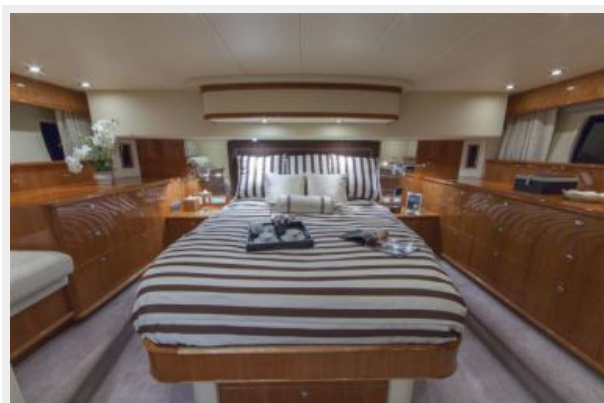
Galley Looking Aft



Galley Looking Starboard



Galley Looking Aft**Full Size Fridge & Oven****Galley to Port****Inside Helm****Dinette to Starboard****Companionway Electrical Panel**

Companionway Laundry**Companionway Looking Forward****Master Looking Aft****Master Looking to Port****Master Looking to Starboard****Master Looking Forward**

Master Head



Starboard Guest Cabin



Portside Guest Head



Starboard Guest Cabin



Portside Guest Head



VIP



VIP



Foredeck



Sun Lounge Area



Foredeck



Windlass Detail



Side Decks



Aft Deck to Port



Aft Deck to Starboard



Aft Deck



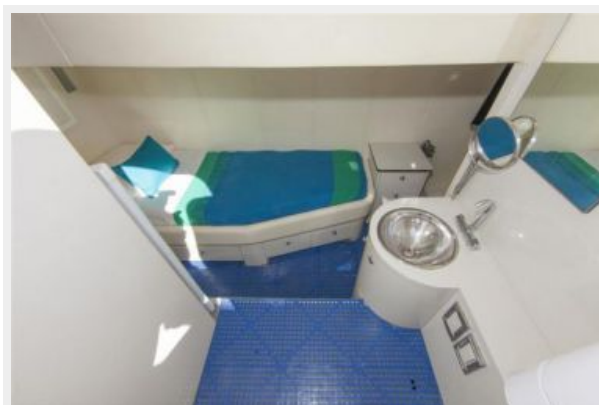
Aft Deck



Aft Deck Grill



Crew Looking Forward



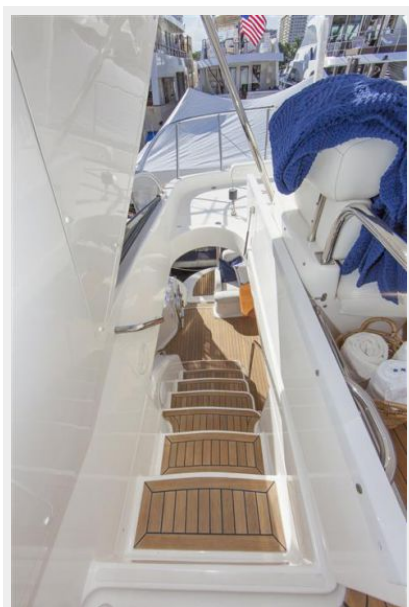
Crew Looking to Port



Crew Looking to Starboard



Flybridge Access



Flybridge Looking Aft



Flybridge Looking Aft**Flybridge Looking Forward****Flybridge Bar****Flybridge Companion Seat****Flybridge Looking Starboard****Flybridge Looking Aft from Sun Lounge**

Flybridge Looking Aft from Helm



Helm



Helm



Sun Lounge Forward of Helm



Engine Room Looking Forward



Starboard Engine



Port Engine**Engine Room Looking Aft****Generator****Chilled Water AC****Alternate Profile****Alternate Profile**

Side View



Transom



Side View



Alternate Profile



Alternate Profile



CONTACTS

Andrey Shestakov, leading yacht broker of the sales department of Shestakov Yacht Sales Inc. Shestakov Yacht Sales Inc., the official representative of the Miami/Fort Lauderdale FL headquarters.

Contact details

Email:
andrey@shestakovyachtsales.com

Web: shestakovyachtsales.com/en/

Telephones

USA: **+1(954)274-4435**

Office hours

Monday – Saturday: **9:00 - 21:00 EDT**

Sunday: **closed**

Address



Harbour Towne Marina, 850 NE 3rd St,
STE 213, Dania, FL 33004