

## 2015 SPECIAL — SEA RAY



**Builder:** [SEA RAY](#)

**Year Built:** 2007

**Model:** Motor Yacht

**Price:** **PRICE ON APPLICATION**

**Location:** United States

**LOA:** 44' 0" (13.41m)

**Beam:** 14' 3" (4.34m)

**Max Draft:** 3' 8" (1.12m)

Our experienced yacht broker, Andrey Shestakov, will help you choose and buy a yacht that best suits your needs **2015 Special — SEA RAY** from our catalogue. Presently, at Shestakov Yacht Sales Inc., we have a wide variety of yachts available on our sale's list. We also work in close contact with all the big yacht manufacturers from all over the world.

If you would like to buy a yacht **2015 Special — SEA RAY** or would like help answering any questions concerning purchasing, selling or chartering a yacht, please call **+1(954)274-4435**

# TABLE OF CONTENTS

TABLE OF CONTENTS	2
SPECIFICATIONS	5
Basic Information	5
Dimensions	5
Speed, Capacities and Weight	5
Accommodations	5
Hull and Deck Information	5
Engine Information	6
DETAILED INFORMATION	7
Manufacturer Provided Description	7
Exclusions	7
Disclaimer	7
PHOTOS	8
Bow	8
Starboard Profile	8
Facing Aft	8
Bow	8
Sun Cushion	9
Bow - Windlass / Search Light	9
Bow Sun Cushion	9
Helm Station	9
Helm Station	9
Raymarine Hybrid Touch	9
Raymarine Hybrid Touch	10
Electronics	10
Bow Thruster	10
Electronics	10
Raymarine Hybrid Touch	10

440 Hours	10
Aft seating / TV	11
Helm Station	11
Molded Stairs	11
Aft Seating	11
Carpet (New in 2013)	12
Salon	12
New Sub Woofer 2014	12
Electronics	12
Electonics	13
New Amp for Flybridge Sub Woofer	13
Cummins QSC 8.3 500 HO	13
Settee	18
Galley	18
Port Guest Berth	18
Port Guest Berth	18
Master Stateroom - Head	19
Swim Platform - Carpeted	19
Engine Room - Facing Forward	19
2 new shore power cables	20
Engine Room - Facing Aft	20
Manufacturer Provided Image	20
Manufacturer Provided Image	20
Manufacturer Provided Image	21
Manufacturer Provided Image	21
<b>CONTACTS</b>	<b>22</b>
Contact details	22
Telephones	22
Office hours	22

---

Address

22

---

---

# SPECIFICATIONS

---

## Basic Information

---

**Category:** Motor Yacht

**Model Year:** 2007

**Year Built:** 2007

**Country:** United States

## Dimensions

---

**LOA:** 44' 0" (13.41m)

**Beam:** 14' 3" (4.34m)

**Max Draft:** 3' 8" (1.12m)

## Speed, Capacities and Weight

---

**Displacement:** 28500 Pounds

**Water Capacity:** 120 Gallons

**Holding Tank:** 42 Gallons

**Fuel Capacity:** 350 Gallons

## Accommodations

---

**Total Cabins:** 2

**Total Berths:** 6

**Total Heads:** 2

## Hull and Deck Information

---

**Hull Material:** Fiberglass

---

## Engine Information

---

**Engines:** 2

**Manufacturer:** Mercruiser

**Model:** Cummins QSC-500

**Engine Type:** Inboard

**Fuel Type:** Diesel

---

# DETAILED INFORMATION

---

## Manufacturer Provided Description

---

No matter where you plan to go, you'll arrive in style with the 44 Sedan Bridge. From its seamless fiberglass spoiler and Sunbrella soft top, to its graphic striping at the water line, this impressive sport yacht is sure to command attention. And thanks to the power of its twin Cummins MerCruiser QSC 500 diesel engines no matter where you're headed, you'll arrive ahead of the rest.

## Exclusions

---

Owner's personal belongings.

## Disclaimer

---

The Company offers the details of this vessel or yacht in good faith but cannot guarantee or warrant the accuracy of this information nor warrant the condition of the vessel. A buyer should instruct his representatives, agents, or his surveyors, to investigate such details as the buyer desires validated. This vessel or yacht is offered subject to prior sale, price change, or withdrawal without notice.

# PHOTOS

**Starboard Profile**



**Bow**



**Bow**



**Facing Aft**





**Sun Cushion**



**Bow - Windlass / Search Light**



**Bow Sun Cushion**



**Helm Station**



**Helm Station**



**Raymarine Hybrid Touch**



**Raymarine Hybrid Touch**



**Electronics**



**Bow Thruster**



**Electronics**



**Raymarine Hybrid Touch**



**440 Hours**



**Aft seating / TV**



**Helm Station**



**Aft Seating**



**Molded Stairs**



### Salon



### Carpet (New in 2013)



### New Sub Woofer 2014



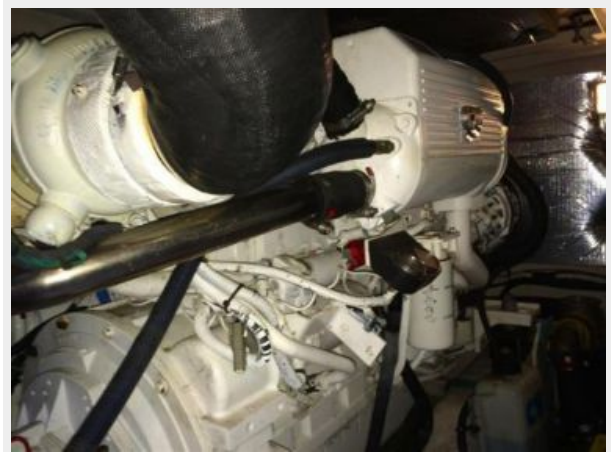
### Electronics



### Electronics



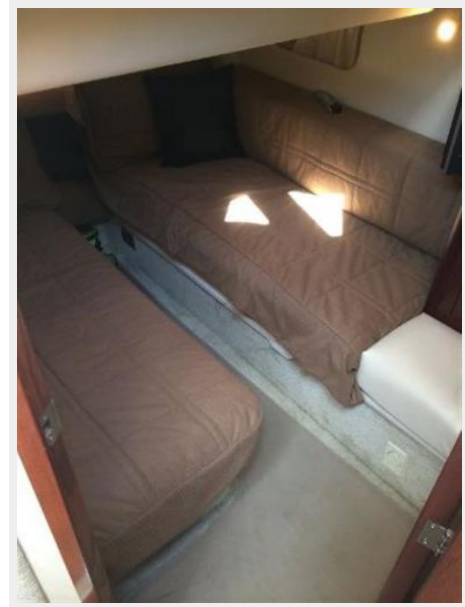
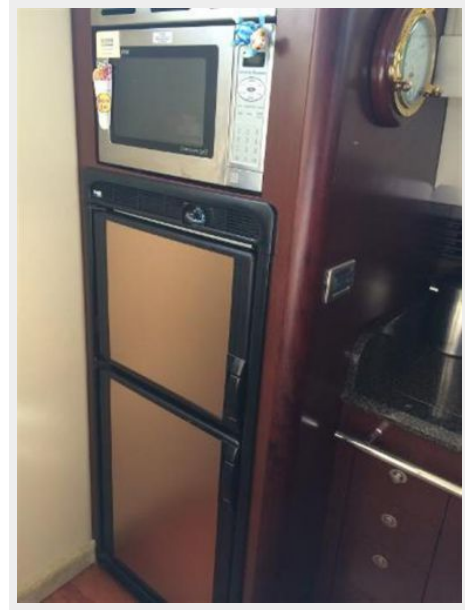
### New Amp for Flybridge Sub Woofer

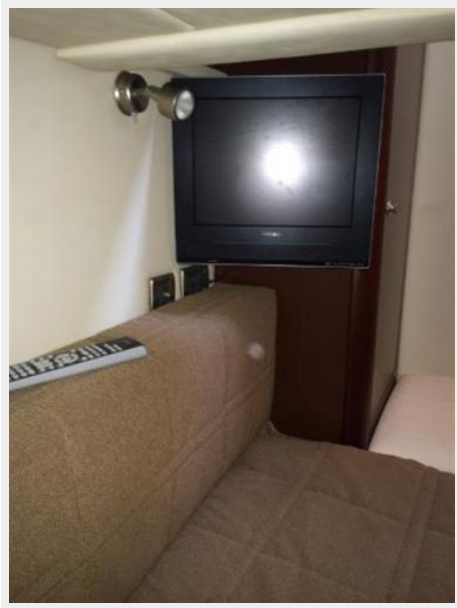


### Cummins QSC 8.3 500 HO

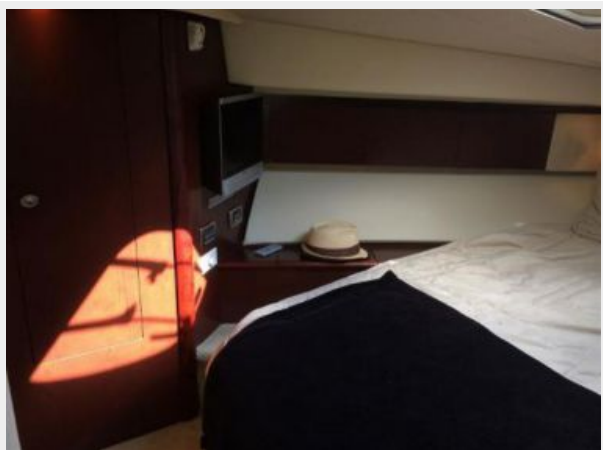
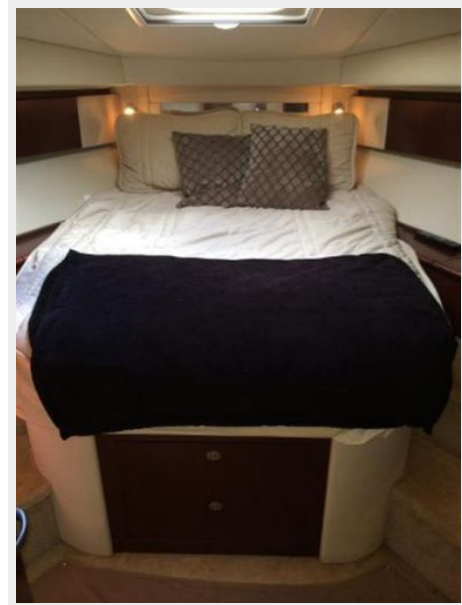


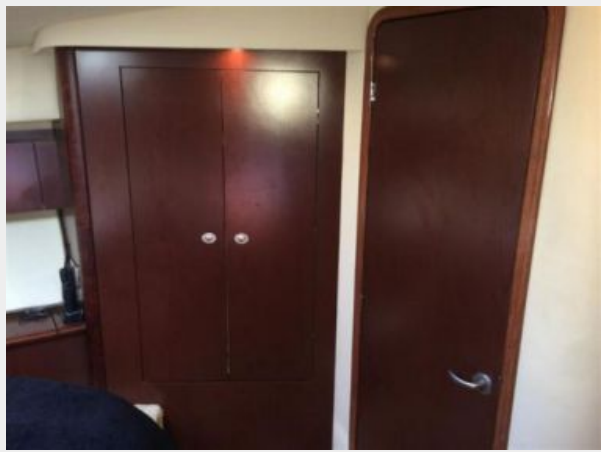




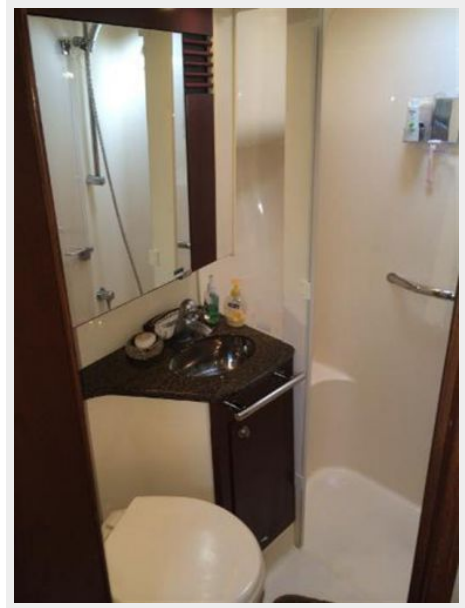








Settee



Galley



Port Guest Berth



Port Guest Berth



### Master Stateroom - Head



### Swim Platform - Carpeted



### Engine Room - Facing Forward



### 2 new shore power cables



### Engine Room - Facing Aft



### Manufacturer Provided Image



### Manufacturer Provided Image



**Manufacturer Provided Image**



**Manufacturer Provided Image**



---

# CONTACTS

---

Andrey Shestakov, leading yacht broker of the sales department of Shestakov Yacht Sales Inc. Shestakov Yacht Sales Inc., the official representative of the Miami/Fort Lauderdale FL headquarters.

---

## Contact details

---

Email: [andrey@shestakovyachtsales.com](mailto:andrey@shestakovyachtsales.com)

Web: [shestakovyachtsales.com/en/](http://shestakovyachtsales.com/en/)

---

## Telephones

---

USA: +1(954)274-4435

---

## Office hours

---

Monday – Saturday: **9:00 - 21:00** EDT

Sunday: **closed**

---

## Address

---



Harbour Towne Marina, 850 NE 3rd St,  
STE 213, Dania, FL 33004