

PIPE DREAM — MAINSHIP



Builder: MAINSHIP

Year Built: 2006

Model: Trawler

Price: PRICE ON APPLICATION

Location: United States

LOA: 43' 0" (13.11m)

Beam: 15' 6" (4.72m)

Max Draft: 3' 8" (1.12m)

Our experienced yacht broker, Andrey Shestakov, will help you choose and buy a yacht that best suits your needs **PIPE DREAM — MAINSHIP** from our catalogue. Presently, at Shestakov Yacht Sales Inc., we have a wide variety of yachts available on our sale's list. We also work in close contact with all the big yacht manufacturers from all over the world.

If you would like to buy a yacht **PIPE DREAM — MAINSHIP** or would like help answering any questions concerning purchasing, selling or chartering a yacht, please call **+1(954)274-4435**

TABLE OF CONTENTS

TABLE OF CONTENTS	2
SPECIFICATIONS	5
Basic Information	5
Dimensions	5
Speed, Capacities and Weight	5
Accommodations	5
Hull and Deck Information	5
Engine Information	5
DETAILED INFORMATION	6
Electronics	6
Inside Equipment	6
Electrical Equipment	6
Outside Equipment/Extras	6
Additional Information	6
Exclusions	7
Disclaimer	7
PHOTOS	8
BOARDING LADDER	8
AFT DECK SEATING	8
COCKPIT	8
BREAKER PANEL	8
DESK	9
FLYBRIDGE HELM	9
FLYBRIDGE SEATING	9
FLYBRIDGE TABLE	9
STEPS TO FLYBRIDGE	10
MORE SEATING	10
BOW	10

FLYBRIDGE VIEW	10
GALLEY TO SALON TV VIEW	11
SUB ZERO FRIDGE AND FREEZER	11
GALLEY	11
GENSET	11
GUEST HEAD	12
GUEST SINK	12
GUEST STATEROOM	12
GUEST TV	12
FLYBRIDGE HELM SEAT	13
HOUR METER	13
FORWARD TO AFT INTERIOR VIEW	13
VIEW TO GUEST ROOMS	13
LAUNDRY/ENGINE ROOM	14
LOWER HELM	14
LOWER HELM	14
MASTER STATEROOM	14
MASTER STEPS TO COCKPIT	15
MASTER HEAD	15
MASTER SHOWER	15
MASTER SINK	15
PORT ENGINE	16
MASTER TV	16
PORT SIDE VIEW	16
SALON	16
SALON	17
SALON TV	17
STARBOARD SIDE VIEW	17
PIPE DREAM	17

STERN	18
GALLEY	18
TABLE	18
TABLE AND HELM	18
WASHER/DRYER	19
TWIN STATEROOM	19
STARBOARD ENGINE	19
CONTACTS	20
Contact details	20
Telephones	20
Office hours	20
Address	20

SPECIFICATIONS

Basic Information

Category: Trawler

Model Year: 2006

Year Built: 2006

Country: United States

Dimensions

LOA: 43' 0" (13.11m)

Beam: 15' 6" (4.72m)

Max Draft: 3' 8" (1.12m)

Clearance: 18' 8" (5.69m)

Speed, Capacities and Weight

Water Capacity: 250 Gallons

Holding Tank: 50 Gallons

Fuel Capacity: 500 Gallons

Accommodations

Total Cabins: 3

Total Heads: 2

Hull and Deck Information

Hull Material: Fiberglass

Engine Information

Engines: 2

Manufacturer: Yanmar

Model: 6LYA-STP

Engine Type: Inboard

Fuel Type: Diesel

DETAILED INFORMATION

Electronics

Depthsounder DVD player Autopilot Compass GPS CD player TV set Navigation center VHF Plotter

Inside Equipment

Air conditioning Heating Electric bilge pump Washing machine Marine head Bow thruster Hot water Refrigerator Microwave oven - Convection/Microwave Deep freezer Battery charger

Electrical Equipment

Generator Shore power inlet

Outside Equipment/Extras

Outside Equipment/Extras Cockpit cushions Cockpit shower Swimming ladder Cockpit table Outboard engine brackets Electric windlass **Covers** Bimini Top

Additional Information

3 Flat screen TV's with Bose sound system

3 AC units

Subzero Fridge

Subzero Freezer

Ceran Princes 3 burner Stove

Convection/Microwave oven

Vacu flush Heads

Central Vac

U-Line Ice maker

Splendide 2000S Washer/Dryer

Protech Battery Charger

Windlass

Gas Grill

Spare Props

Drip less Shafts

8 kw Kohler Generator 416 hours w/ advanced digital controls

New Flybridge enclosure with Strata Glass and new bimini canvas

Lower helm has Raymarine E120 Chartplotter

Autopilot

Bow thruster

Raymarine VHF

Upper helm has 2 Raymarine E80 Chartplotters

Raymarine depth finder

Sony Marine stereo 5 disc MP3

3 bilge pumps with automatic and manual modes

Exclusions

Owner's personal belongings.

Disclaimer

The Company offers the details of this vessel or yacht in good faith but cannot guarantee or warrant the accuracy of this information nor warrant the condition of the vessel. A buyer should instruct his representatives, agents, or his surveyors, to investigate such details as the buyer desires validated. This vessel or yacht is offered subject to prior sale, price change, or withdrawal without notice.

PHOTOS

AFT DECK SEATING



BOARDING LADDER



BREAKER PANEL



COCKPIT



DESK



FLYBRIDGE HELM



FLYBRIDGE SEATING



FLYBRIDGE TABLE



STEPS TO FLYBRIDGE



MORE SEATING



BOW

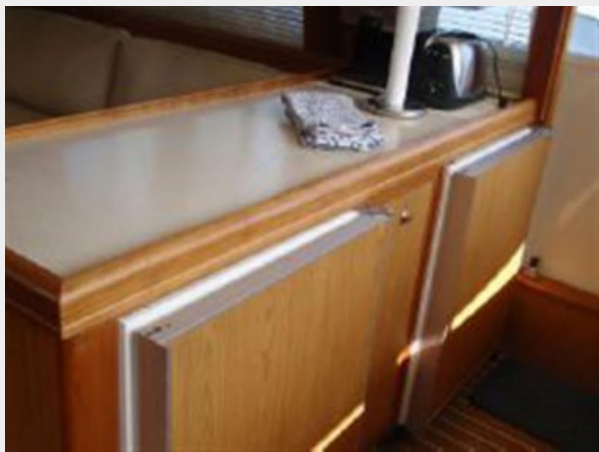


FLYBRIDGE VIEW



GALLEY TO SALON TV VIEW

SUB ZERO FRIDGE AND FREEZER



GALLEY



GENSET



GUEST HEAD



GUEST SINK



GUEST STATEROOM



GUEST TV



FLYBRIDGE HELM SEAT



HOUR METER



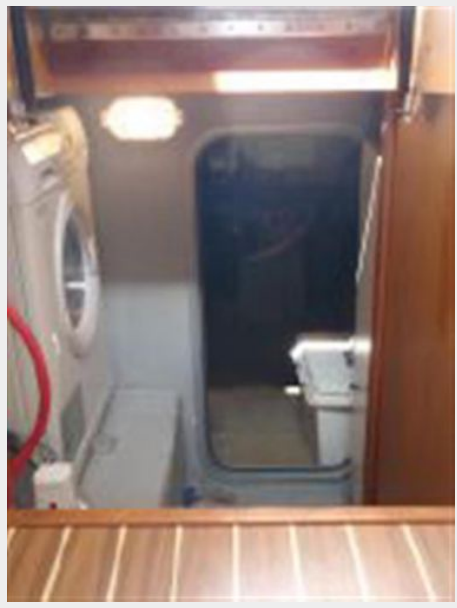
FORWARD TO AFT INTERIOR VIEW



VIEW TO GUEST ROOMS



LAUNDRY/ENGINE ROOM



LOWER HELM



LOWER HELM



MASTER STATEROOM



MASTER STEPS TO COCKPIT



MASTER HEAD



MASTER SHOWER



MASTER SINK



MASTER TV



PORT ENGINE



PORT SIDE VIEW



SALON



SALON



SALON TV



STARBOARD SIDE VIEW



PIPE DREAM



STERN



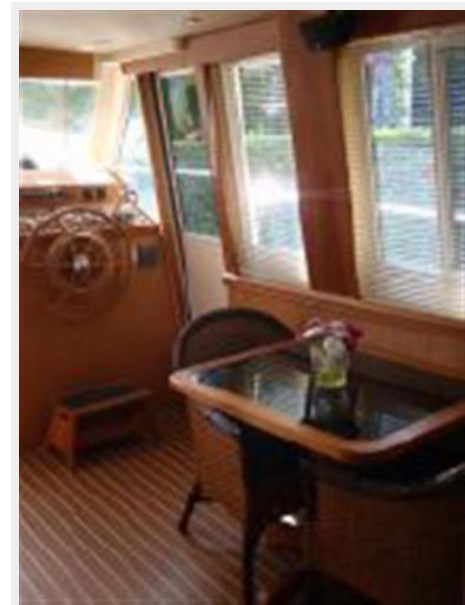
GALLEY



TABLE



TABLE AND HELM



TWIN STATEROOM



WASHER/DRYER



STARBOARD ENGINE



CONTACTS

Andrey Shestakov, leading yacht broker of the sales department of Shestakov Yacht Sales Inc. Shestakov Yacht Sales Inc., the official representative of the Miami/Fort Lauderdale FL headquarters.

Contact details

Email: andrey@shestakovyachtsales.com

Web: shestakovyachtsales.com/en/

Telephones

USA: +1(954)274-4435

Office hours

Monday – Saturday: **9:00 - 21:00** EDT

Sunday: **closed**

Address



Harbour Towne Marina, 850 NE 3rd St,
STE 213, Dania, FL 33004