

JUGUETON — UNIESSE



Builder: UNIESSE

Year Built: 2007

Model: Motor Yacht

Price: PRICE ON APPLICATION

Location: United States

LOA: 70' 0" (21.34m)

Beam: 17' 8" (5.38m)

Max Draft: 5' 10" (1.78m)

Our experienced yacht broker, Andrey Shestakov, will help you choose and buy a yacht that best suits your needs **Jugueton — UNIESSE** from our catalogue. Presently, at Shestakov Yacht Sales Inc., we have a wide variety of yachts available on our sale's list. We also work in close contact with all the big yacht manufacturers from all over the world.

If you would like to buy a yacht **Jugueton — UNIESSE** or would like help answering any questions concerning purchasing, selling or chartering a yacht, please call **+1(954)274-4435**

TABLE OF CONTENTS

TABLE OF CONTENTS	2
SPECIFICATIONS	3
Overview	3
Basic Information	3
Dimensions	3
Speed, Capacities and Weight	3
Accommodations	3
Hull and Deck Information	4
Engine Information	4
DETAILED INFORMATION	5
2007 / 2014 Uniesse Sport 70'	5
Exclusions	12
Disclaimer	12
PHOTOS	13
CONTACTS	24
Contact details	24
Telephones	24
Office hours	24
Address	24

SPECIFICATIONS

Overview

If you are in the market for a sleek and fully equipped sport yacht, then this is it! This Uniesse 70 Sport was completely refitted in 2014. Some of the major highlights of this awesome four stateroom model include: new gray-pearl metallic paint, high-end Miele appliances, new Bose sound system for the interior and JL Audio in the cockpit and bow, new upholstery, new KVH M7 antennas, and much more! The tender is also included in the sale of this vessel! Boat conveniently located in Miami Beach! Owner wants it sold! Please contact listing agent to step onboard this sport yacht! * **Not for Sale to U.S. Residents while in U.S. waters***

Basic Information

Category: Motor Yacht

Model Year: 2007

Year Built: 2007

Refit Year: 2014

Country: United States

Dimensions

LOA: 70' 0" (21.34m)

Beam: 17' 8" (5.38m)

Max Draft: 5' 10" (1.78m)

Speed, Capacities and Weight

Displacement: 83700 Pounds

Water Capacity: 261 Gallons

Fuel Capacity: 1300 Gallons

Accommodations

Total Cabins: 4

Total Heads: 3

Hull and Deck Information

Hull Material: Fiberglass

Engine Information

Engines: 2

Manufacturer: MAN

Model: V12

Fuel Type: Diesel

DETAILED INFORMATION

2007 / 2014 Uniesse Sport 70'

CABINS & HEADS

Master Cabin

- Bedside reading lights
- Wood floors
- Stereo system with speakers
- Digital safe
- Fabric headboard
- LED lighting
- High capacity wardrobe with shelves
- Imitation leather ceiling with wood decorations
- King size bed with mattress, pillows and bedspread
- Lateral fabric sofa with wood table
- Sockets 24\220 volt
- Stainless steel opening portholes
- LCD/LED TV
- Wardrobe with coat stand and chest of drawers
- Wood and imitation leather bulkheads
- Wood drawers under the bed

Master Head

- Botticino marble counter top
- Botticino marble floor
- Ceramic bidet with hot\cold water mixer control
- Ceramic sink with hot\cold water mixer
- Complete set of bathroom fittings
- Electric ceramic toilet
- Front sink mirror
- LED lighting
- Holding water tank indicators
- Large separate Plexiglas shower with hot\cold water mixer
- Sockets 24\220 volt
- Stainless steel opening porthole
- Varnished wood cabinets and shelves
- Varnished wood bulkhead
- Varnished wood ceiling

- Varnished wood furniture
- Shower with teak grating

VIP Cabin

- Bedside adjustable reading lights
- Wood floors
- Stereo system with speakers
- Fore bed chest of drawers
- Curtains
- Fabric headboard
- LED lighting
- Imitation leather ceiling with decorations
- Full size bed with mattress, pillows and bedspread
- Sockets 24\220 volt
- Stainless steel opening portholes
- Storage under the bed
- TV LCD/LED
- Varnished wood bulkhead with imitation leather
- Wood lockers and shelves
- Wood wardrobe

VIP Head

- Botticino marble counter top
- Botticino marble floor
- Ceramic bidet with hot\cold water mixer control
- Ceramic sink with hot\cold water mixer control
- Complete set of bathroom fittings
- Electric ceramic toilet
- Front sink mirror
- LED lighting
- Large separate Plexiglas shower with hot\cold water mixer control
- Sockets 24\220 volts
- Stainless steel opening porthole
- Varnished wood bulkhead
- Varnished wood ceiling
- Varnished wood furniture
- Varnished wood lockers and shelves
- Shower with teak grating
- Water level indicator

Starboard Guest Cabin

- Bedside lights
- Wood floors
- Stereo system with speakers
- Drawers under the bed
- Fabric headboard
- Full high mirror between beds
- LED lighting
- Imitation leather and cherry wood bulkhead
- Lateral wardrobe
- Lockers and shelves
- Sockets 24\220 volts
- Stainless steel opening porthole
- Two separate single beds with mattress, pillows and bedspread

Guest Head

- Botticino marble counter top
- Botticino marble floor
- Ceramic sink with hot\cold water mixer control
- Complete set of bathroom fittings
- Electric ceramic toilet
- Front sink mirror
- LED lights
- Large separate Plexiglas shower with hot\cold water mixer control
- Sockets 24\220 volts
- Stainless steel opening porthole
- Varnished wood lockers and shelves
- Varnished wood bulkhead
- Varnished wood ceiling
- Varnished wood furniture
- Shower bulkhead with teak grating
- Water level indicators

Portside Guest Cabin

- Bedside reading lights
- Bunk bed with mattress, pillows and bedcover
- Wood floors

- Stereo system with speakers
- Drawers under the bed
- LED lighting
- Imitation leather and cherry wood bulkhead
- Lateral wardrobe
- Sockets 24\220 volts
- Stainless steel opening porthole
- Wood lockers and shelves

GALLEY

- Botticino marble counter top
- Complete furniture with drawers and shelves
- Dishwasher
- Exhaust fan for cooktop
- Four burner pyroceramic cooktop
- Garbage disposer
- LED lighting
- High capacity refrigerator and freezer
- Microwave electric convention oven
- Stainless steel sink with hot\cold water mixer control

ENGINE ROOM

- Automatic\manual, centralized fire extinguishing system
- Batteries for engine starting
- Batteries for generator
- Batteries for services
- Electric blowers
- Emergency lights
- Engine room water level warning siren
- Filters able to separate water from fuel and impurity
- Fresh water outlet
- Fuel tanks in peralluman
- Inspection lights
- Remote control for extinguishing system
- Remote control for fuel shut valves
- Remote control for opening\closing air intakes
- Sound isolation throughout engine room
- Stern and bow watertight walls
- Water intakes for cooling engine with inspection filters

CONSTRUCTION

- CE omologation certificate category A
- Topsides and deck in GPR hand laid vinilester resin with airex sandwich
- Transverse and longitudinal reinforcement throughout hull made with unidirectional and woven glassfiber
- Bottom and deck in blister \resistant vinilester glassfiber resin hand laid
- Isophatic gelcoat finishing (ivory colour Uniesse standard)
- Epoxy resin, antiosmosis, antifouling bottom paint

DECK & HULL

- Bow thruster / stern thruster
- Bruce Anchor kg. 50
- Cockpit and swimming platform in teak
- Cockpit deck shower with hot\cold water mixer control
- Cylindrical fender
- Dockside water pressure
- Electric aft windlass 1000 W
- Electric connecting cable for shore power supply (50 AMP)
- Electric hydraulic gangway with remote control
- Electric seawater pump for washing aft deck and anchor chain on bow
- Electric sliding opening with hard top
- Electric windlass 2500 W with controls (bow, bridge)
- Electric\hydraulic swimming platform ladder
- Engines MAN 1550 HP
- Hatch on bow
- Large chain locker with doors on bow
- Mooring lines
- Plexiglas and stainless steel windscreen
- Self drain cockpit
- Shore phone plug
- Shore power
- Stainless steel anchor guide
- Stainless steel cleats at aft
- Stainless steel cleats on bow
- Stainless steel cleats on swimming platform
- Stainless steel grab rail
- Stainless steel lateral cleats
- Stainless steel mooring line chocks for transom and bow
- Stainless steel oval opening portholes

- Stainless steel pulpit and stanchions
- Sunbathing cushions on bow
- Zinced chain

COCKPIT FITTINGS

- Cockpit teak table with stainless steel base
- Large U-shaped vinyl sofa
- Vinyl sun lounge
- Cabinet and lockers, sink with hot/cold water mixer, 2 burner cooktop, freezer and fridge

HELM CONSOLES

Main helm console station

- Air horn
- Anchor windlass control and chain washer
- Automatic pilot Raymarine
- Bilge pump switch
- Bow thrusters control panel
- Clock, thermometer and hygrometer
- Echo-speed log water temperature indicator
- Electric general panel
- Electrical controls for transmission and throttles
- Engine oil pressure warning lights and siren
- Engine oil pressure warning lights
- Engine rev-counter
- Engine room water warning lights and siren
- Engine room water warning siren
- Engine water temperature warning lights
- Ergonomic leather helmseat
- Fuel level gauge
- GPS-chartplotter Raymarine E 120
- High speed compass
- Hydraulic steering
- Radar
- Rudder angle indicator
- Search lights control panel
- Switch for anchor lights
- Switch for light on dashboard
- Switch for navigation lights
- Switch for start engine

- Trim tabs with built-in indicators
- VHF-radio
- Water level indicators
- Wind screen wiper switch
- Wiper washer switch

SALON

- Dining table
- Wood floors
- Central U-shaped fabric sofa
- Coffee-table
- Curtains on sliding door and side windows
- LED lighting
- NEW BOSE Entertainment System
- Lockers with drawers and shelves
- Sliding glass and stainless steel door
- LCD / LED TV
- Varnished wood and imitation leather bulkhead
- Wood dining oval table

UPDATES 2014

- New super exclusive metallic gray-pearl painting
- New bottom paint
- Antifouling paint
- Sanding of teak detail
- Electrical system reconverted to US specs
- Shore power system redone and reconverted for US dock specs
- All running gear was replaced brand new
- Hydraulic system was completed revised and replaced with new parts
- New trim tab pump and all trim tab system was completely redone
- New steering system installed (US SPEC), new pump was installed to get isolated from trim tab system
- All MIELE / BOSCH appliances brand new, bought 90 days ago
- Brand new refrigerator
- Docking master (WIRELESS DOCKING)
- Swim ladder and garage door hydraulics were completely serviced and redone
- Hydraulic windows were completely redone
- New LED under water lights (6)
- New TVS / DIRECT TV – KVH M7 Antennas

- Brand new cushions and covers
- Brand new \$12,000 Sound system / 3 Different zones
- Tender was fully serviced
- New batteries
- Water maker was serviced and redone to US SPECS
- Both generators had major service done in July
- 1000 hour motor maintenance done by MAN authorized Dealer

Exclusions

Owner's personal belongings.

Disclaimer

The Company offers the details of this vessel or yacht in good faith but cannot guarantee or warrant the accuracy of this information nor warrant the condition of the vessel. A buyer should instruct his representatives, agents, or his surveyors, to investigate such details as the buyer desires validated. This vessel or yacht is offered subject to prior sale, price change, or withdrawal without notice.

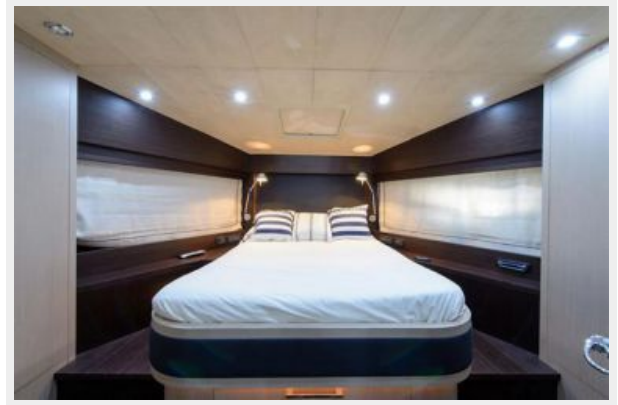
PHOTOS

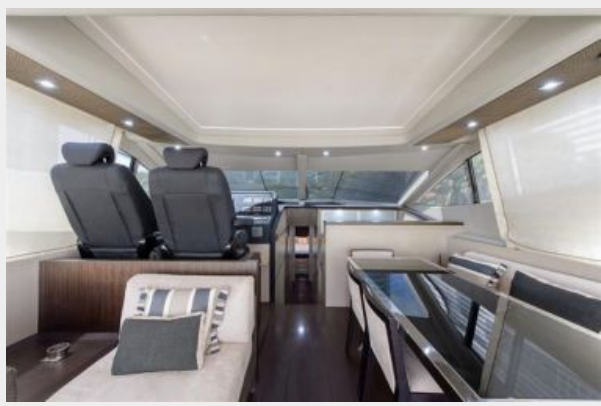


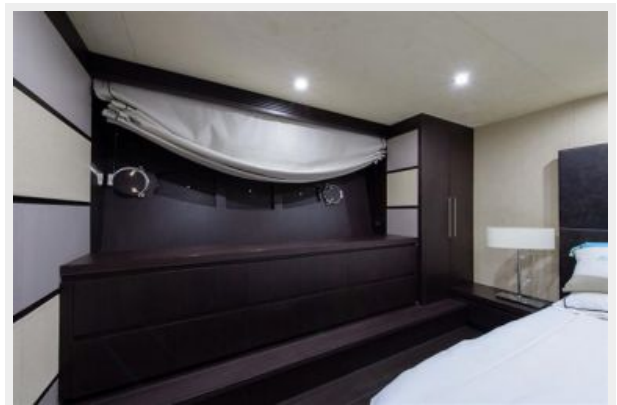
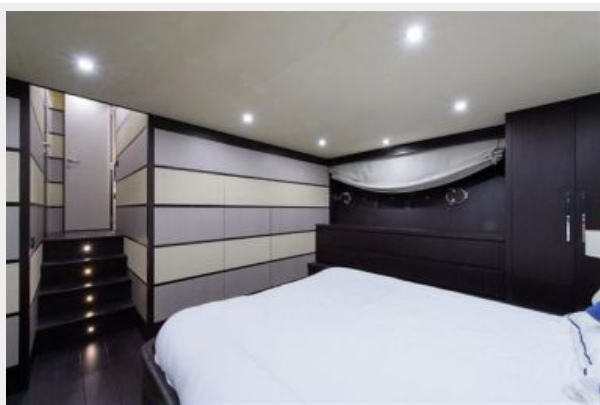
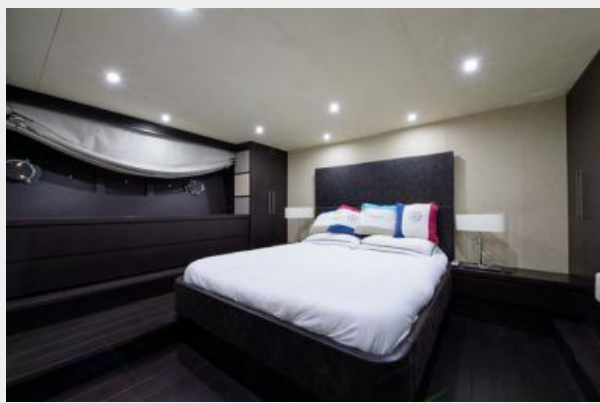
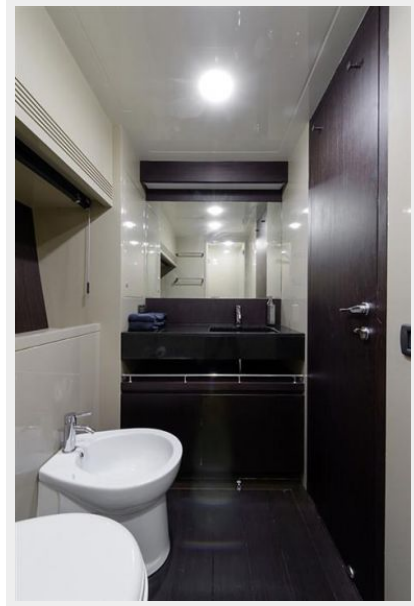


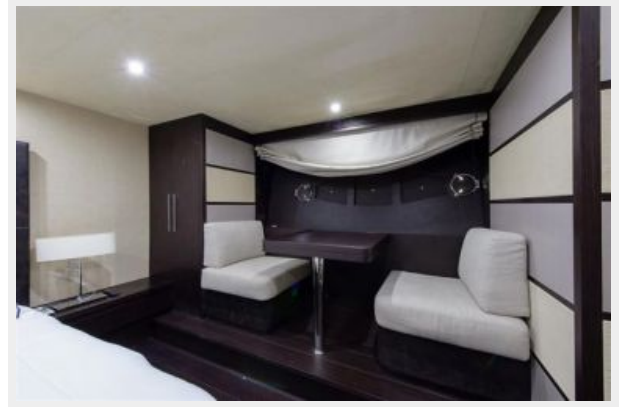


















CONTACTS

Andrey Shestakov, leading yacht broker of the sales department of Shestakov Yacht Sales Inc. Shestakov Yacht Sales Inc., the official representative of the Miami/Fort Lauderdale FL headquarters.

Contact details

Email: andrey@shestakovyachtsales.com

Web: shestakovyachtsales.com/en/

Telephones

USA: +1(954)274-4435

Office hours

Monday – Saturday: **9:00 - 21:00** EDT

Sunday: **closed**

Address



Harbour Towne Marina, 850 NE 3rd St,
STE 213, Dania, FL 33004