

JUGUETON — UNIESSE



Судостроитель: UNIESSE

Год постройки: 2007

Модель: Моторная яхта

Цена: **ЦЕНА ЯХТЫ ПО ЗАПРОСУ**

Местонахождение: United States

Длина общая: 70' 0" (21.34m)

Ширина: 17' 8" (5.38m)

Макс. осадка: 5' 10" (1.78m)

Купить Jugueton — UNIESSE а также выбрать подходящую вам яхту из нашего каталога яхт вам поможет опытный яхтенный брокер Андрей Шестаков. На сегодняшний день компания Shestakov Yacht Sales Inc. имеет большое количество яхт в собственном списке продаж, а также тесно сотрудничает со всеми крупными яхтенными производителями по всему миру.

Для того чтобы купить яхту Jugueton — UNIESSE а также проконсультироваться по любому вопросу связанному с покупкой, продажей, чартером яхт позвоните по телефону **+7(918)465-66-44**.

ОГЛАВЛЕНИЕ

ОГЛАВЛЕНИЕ	2
ХАРАКТЕРИСТИКИ	3
Обзор	3
Основная информация	3
Размеры	3
Скорость, вместимость и масса	3
Размещение	3
Корпус и палуба	4
Информация о двигателе	4
ПОДРОБНОЕ ОПИСАНИЕ	5
2007 / 2014 Uniesse Sport 70'	5
Исключения	12
Отказ от ответственности	12
ФОТОГРАФИИ	13
КОНТАКТЫ	24
Контактная информация	24
Телефоны	24
Время работы	24
Адрес	24

ХАРАКТЕРИСТИКИ

Обзор

If you are in the market for a sleek and fully equipped sport yacht, then this is it! This Uniesse 70 Sport was completely refitted in 2014. Some of the major highlights of this awesome four stateroom model include: new gray-pearl metallic paint, high-end Miele appliances, new Bose sound system for the interior and JL Audio in the cockpit and bow, new upholstery, new KVH M7 antennas, and much more! The tender is also included in the sale of this vessel! Boat conveniently located in Miami Beach! Owner wants it sold! Please contact listing agent to step onboard this sport yacht! * **Not for Sale to U.S. Residents while in U.S. waters***

Основная информация

Тип судна: Моторная яхта

Модельный год: 2007

Год постройки: 2007

Год обновления: 2014

Страна: United States

Размеры

Длина общая: 70' 0" (21.34m)

Ширина: 17' 8" (5.38m)

Макс. осадка: 5' 10" (1.78m)

Скорость, вместимость и масса

Водоизмещение: 83700 Pounds

Вместимость воды: 261 Gallons

Объем топливного бака: 1300 Gallons

Размещение

Всего кают: 4

Всего ком. состава: 3

Корпус и палуба

Материал корпуса: Fiberglass

Информация о двигателе

Двигатели: 2

Производитель: MAN

Модель: V12

Тип топлива: Diesel

ПОДРОБНОЕ ОПИСАНИЕ

2007 / 2014 Uniesse Sport 70'

CABINS & HEADS

Master Cabin

- Bedside reading lights
- Wood floors
- Stereo system with speakers
- Digital safe
- Fabric headboard
- LED lighting
- High capacity wardrobe with shelves
- Imitation leather ceiling with wood decorations
- King size bed with mattress, pillows and bedspread
- Lateral fabric sofa with wood table
- Sockets 24\220 volt
- Stainless steel opening portholes
- LCD/LED TV
- Wardrobe with coat stand and chest of drawers
- Wood and imitation leather bulkheads
- Wood drawers under the bed

Master Head

- Botticino marble counter top
- Botticino marble floor
- Ceramic bidet with hot\cold water mixer control
- Ceramic sink with hot\cold water mixer
- Complete set of bathroom fittings
- Electric ceramic toilet
- Front sink mirror
- LED lighting
- Holding water tank indicators
- Large separate Plexiglas shower with hot\cold water mixer
- Sockets 24\220 volt
- Stainless steel opening porthole
- Varnished wood cabinets and shelves
- Varnished wood bulkhead
- Varnished wood ceiling

- Varnished wood furniture
- Shower with teak grating

VIP Cabin

- Bedside adjustable reading lights
- Wood floors
- Stereo system with speakers
- Fore bed chest of drawers
- Curtains
- Fabric headboard
- LED lighting
- Imitation leather ceiling with decorations
- Full size bed with mattress, pillows and bedspread
- Sockets 24\220 volt
- Stainless steel opening portholes
- Storage under the bed
- TV LCD/LED
- Varnished wood bulkhead with imitation leather
- Wood lockers and shelves
- Wood wardrobe

VIP Head

- Botticino marble counter top
- Botticino marble floor
- Ceramic bidet with hot\cold water mixer control
- Ceramic sink with hot\cold water mixer control
- Complete set of bathroom fittings
- Electric ceramic toilet
- Front sink mirror
- LED lighting
- Large separate Plexiglas shower with hot\cold water mixer control
- Sockets 24\220 volts
- Stainless steel opening porthole
- Varnished wood bulkhead
- Varnished wood ceiling
- Varnished wood furniture
- Varnished wood lockers and shelves
- Shower with teak grating
- Water level indicator

Starboard Guest Cabin

- Bedside lights
- Wood floors
- Stereo system with speakers
- Drawers under the bed
- Fabric headboard
- Full high mirror between beds
- LED lighting
- Imitation leather and cherry wood bulkhead
- Lateral wardrobe
- Lockers and shelves
- Sockets 24\220 volts
- Stainless steel opening porthole
- Two separate single beds with mattress, pillows and bedspread

Guest Head

- Botticino marble counter top
- Botticino marble floor
- Ceramic sink with hot\cold water mixer control
- Complete set of bathroom fittings
- Electric ceramic toilet
- Front sink mirror
- LED lights
- Large separate Plexiglas shower with hot\cold water mixer control
- Sockets 24\220 volts
- Stainless steel opening porthole
- Varnished wood lockers and shelves
- Varnished wood bulkhead
- Varnished wood ceiling
- Varnished wood furniture
- Shower bulkhead with teak grating
- Water level indicators

Portside Guest Cabin

- Bedside reading lights
- Bunk bed with mattress, pillows and bedcover
- Wood floors

- Stereo system with speakers
- Drawers under the bed
- LED lighting
- Imitation leather and cherry wood bulkhead
- Lateral wardrobe
- Sockets 24\220 volts
- Stainless steel opening porthole
- Wood lockers and shelves

GALLEY

- Botticino marble counter top
- Complete furniture with drawers and shelves
- Dishwasher
- Exhaust fan for cooktop
- Four burner pyroceramic cooktop
- Garbage disposer
- LED lighting
- High capacity refrigerator and freezer
- Microwave electric convention oven
- Stainless steel sink with hot\cold water mixer control

ENGINE ROOM

- Automatic\manual, centralized fire extinguishing system
- Batteries for engine starting
- Batteries for generator
- Batteries for services
- Electric blowers
- Emergency lights
- Engine room water level warning siren
- Filters able to separate water from fuel and impurity
- Fresh water outlet
- Fuel tanks in peralluman
- Inspection lights
- Remote control for extinguishing system
- Remote control for fuel shut valves
- Remote control for opening\closing air intakes
- Sound isolation throughout engine room
- Stern and bow watertight walls
- Water intakes for cooling engine with inspection filters

CONSTRUCTION

- CE omologation certificate category A
- Topsides and deck in GPR hand laid vinilester resin with airex sandwich
- Transverse and longitudinal reinforcement throughout hull made with unidirectional and woven glassfiber
- Bottom and deck in blister \resistant vinilester glassfiber resin hand laid
- Isophatic gelcoat finishing (ivory colour Uniesse standard)
- Epoxy resin, antiosmosis, antifouling bottom paint

DECK & HULL

- Bow thruster / stern thruster
- Bruce Anchor kg. 50
- Cockpit and swimming platform in teak
- Cockpit deck shower with hot\cold water mixer control
- Cylindrical fender
- Dockside water pressure
- Electric aft windlass 1000 W
- Electric connecting cable for shore power supply (50 AMP)
- Electric hydraulic gangway with remote control
- Electric seawater pump for washing aft deck and anchor chain on bow
- Electric sliding opening with hard top
- Electric windlass 2500 W with controls (bow, bridge)
- Electric\hydraulic swimming platform ladder
- Engines MAN 1550 HP
- Hatch on bow
- Large chain locker with doors on bow
- Mooring lines
- Plexiglas and stainless steel windscreen
- Self drain cockpit
- Shore phone plug
- Shore power
- Stainless steel anchor guide
- Stainless steel cleats at aft
- Stainless steel cleats on bow
- Stainless steel cleats on swimming platform
- Stainless steel grab rail
- Stainless steel lateral cleats
- Stainless steel mooring line chocks for transom and bow
- Stainless steel oval opening portholes

- Stainless steel pulpit and stanchions
- Sunbathing cushions on bow
- Zinced chain

COCKPIT FITTINGS

- Cockpit teak table with stainless steel base
- Large U-shaped vinyl sofa
- Vinyl sun lounge
- Cabinet and lockers, sink with hot/cold water mixer, 2 burner cooktop, freezer and fridge

HELM CONSOLES

Main helm console station

- Air horn
- Anchor windlass control and chain washer
- Automatic pilot Raymarine
- Bilge pump switch
- Bow thrusters control panel
- Clock, thermometer and hygrometer
- Echo-speed log water temperature indicator
- Electric general panel
- Electrical controls for transmission and throttles
- Engine oil pressure warning lights and siren
- Engine oil pressure warning lights
- Engine rev-counter
- Engine room water warning lights and siren
- Engine room water warning siren
- Engine water temperature warning lights
- Ergonomic leather helmseat
- Fuel level gauge
- GPS-chartplotter Raymarine E 120
- High speed compass
- Hydraulic steering
- Radar
- Rudder angle indicator
- Search lights control panel
- Switch for anchor lights
- Switch for light on dashboard
- Switch for navigation lights
- Switch for start engine

- Trim tabs with built-in indicators
- VHF-radio
- Water level indicators
- Wind screen wiper switch
- Wiper washer switch

SALON

- Dining table
- Wood floors
- Central U-shaped fabric sofa
- Coffee-table
- Curtains on sliding door and side windows
- LED lighting
- NEW BOSE Entertainment System
- Lockers with drawers and shelves
- Sliding glass and stainless steel door
- LCD / LED TV
- Varnished wood and imitation leather bulkhead
- Wood dining oval table

UPDATES 2014

- New super exclusive metallic gray-pearl painting
- New bottom paint
- Antifouling paint
- Sanding of teak detail
- Electrical system reconverted to US specs
- Shore power system redone and reconverted for US dock specs
- All running gear was replaced brand new
- Hydraulic system was completed revised and replaced with new parts
- New trim tab pump and all trim tab system was completely redone
- New steering system installed (US SPEC), new pump was installed to get isolated from trim tab system
- All MIELE / BOSCH appliances brand new, bought 90 days ago
- Brand new refrigerator
- Docking master (WIRELESS DOCKING)
- Swim ladder and garage door hydraulics were completely serviced and redone
- Hydraulic windows were completely redone
- New LED under water lights (6)
- New TVS / DIRECT TV – KVH M7 Antennas

- Brand new cushions and covers
- Brand new \$12,000 Sound system / 3 Different zones
- Tender was fully serviced
- New batteries
- Water maker was serviced and redone to US SPECS
- Both generators had major service done in July
- 1000 hour motor maintenance done by MAN authorized Dealer

Исключения

При продаже яхты исключаются личные вещи владельца.

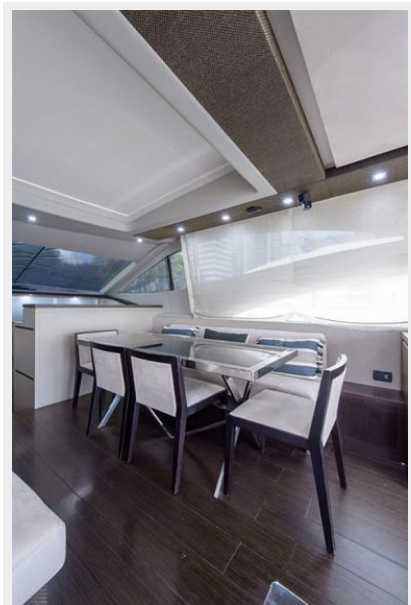
Отказ от ответственности

Компания предоставляет описание судна или яхты добросовестно, но не может гарантировать точность этой информации, а также не ручается за техническое состояние. Покупатель должен проинструктировать своих агентов или оценщиков исследовать представленную информацию более подробно, по собственному желанию. Продажа судна или яхты, изменение цены или снятие с продажи будет происходить без предварительного уведомления.

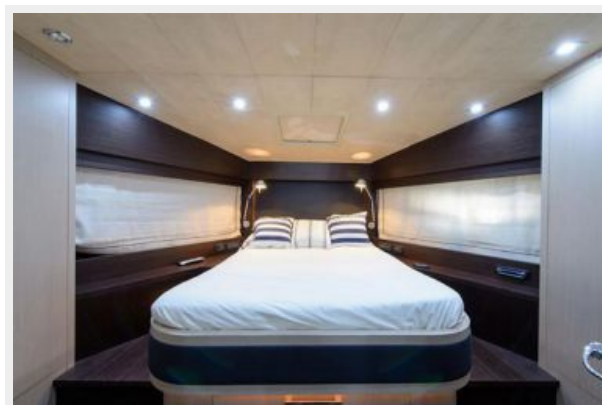
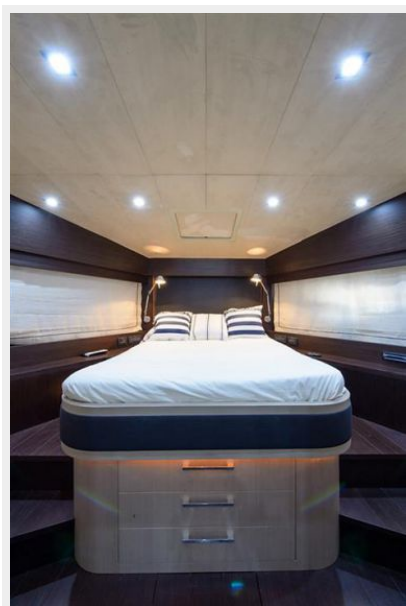
ФОТОГРАФИИ

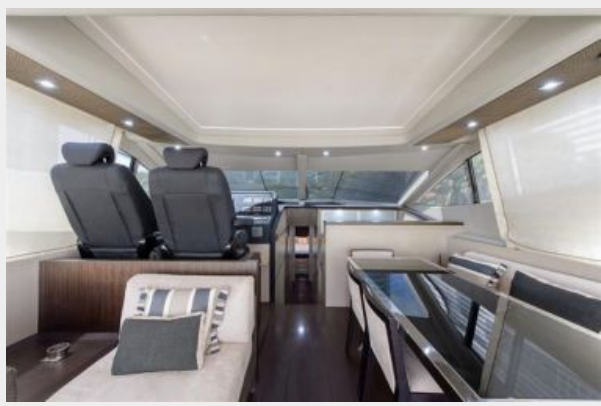


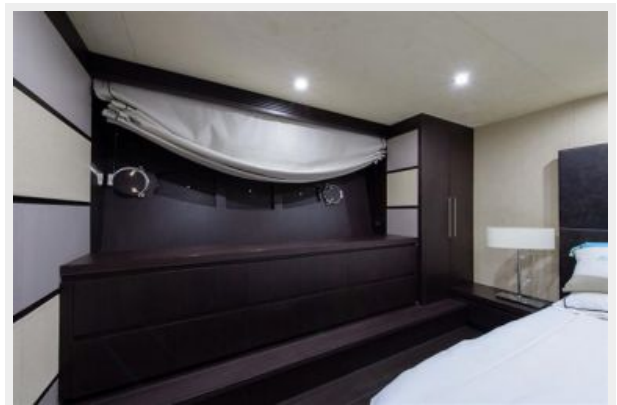
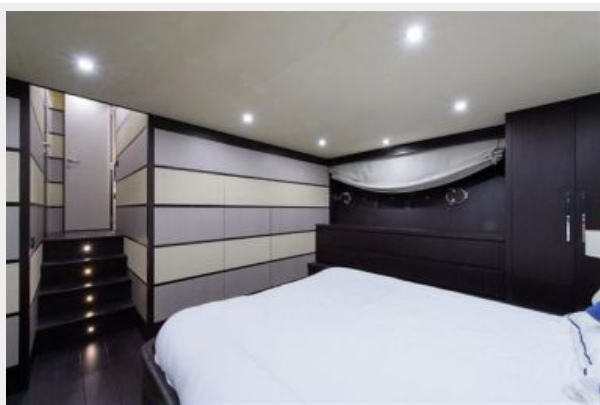
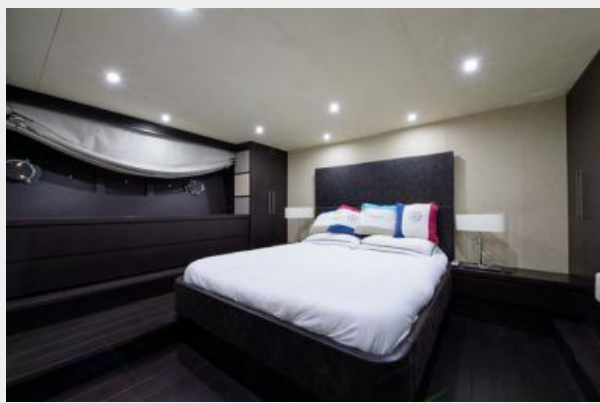


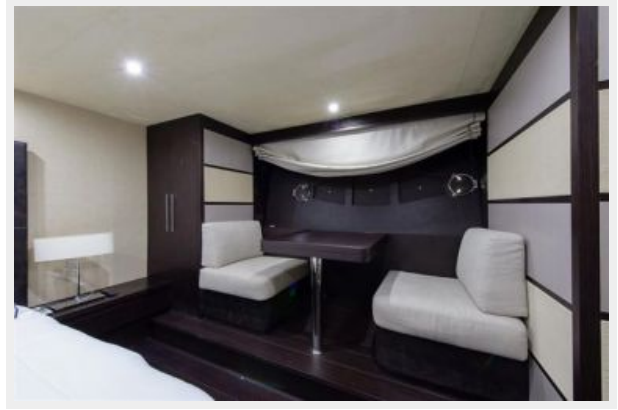
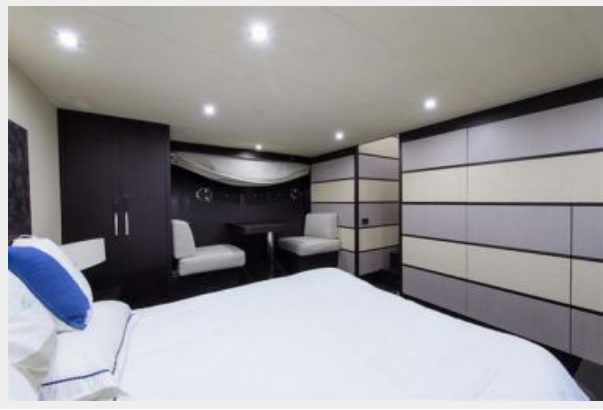


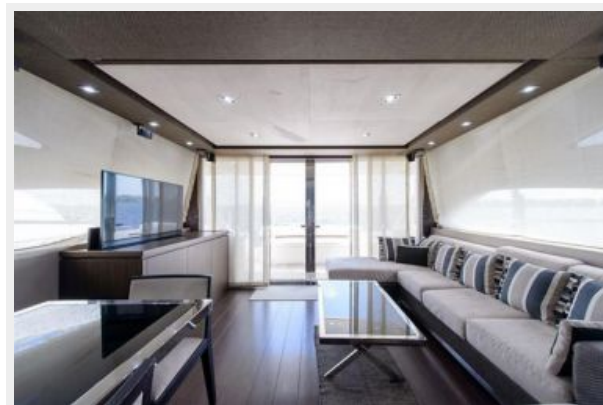
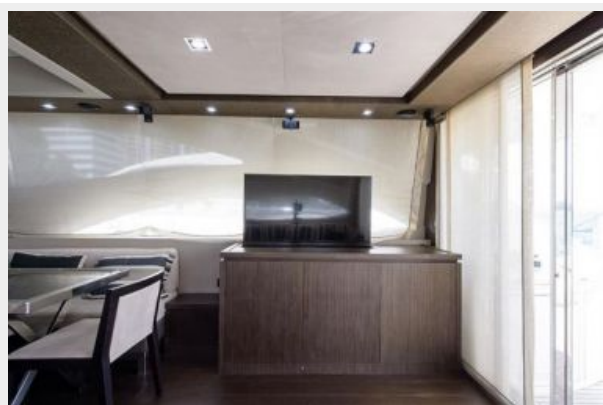
















КОНТАКТЫ

Андрей Шестаков (Andrey Shestakov) – ведущий яхтенный брокер отдела продаж яхт и судов компании Shestakov Yacht Sales Inc. Официальный представитель Shestakov Yacht Sales Inc. для русскоговорящих клиентов в центральном офисе компании в Майами/Форт Лодердейл/Флорида/США.

Контактная информация

Email: andrey@shestakovyachtsales.com

Web: shestakovyachtsales.com

Телефоны

Краснодарский край: **+7(918)465-66-44**

США, Майами, Флорида: **+1(954)274-4435**

Время работы

Понедельник – Суббота: **9:00 - 21:00**
EDT

Воскресенье: **Закрито**

Адрес



Harbour Towne Marina, 850 NE 3rd St,
STE 213, Dania, FL 33004