

## MILLER TIME — JEANNEAU PRESTIGE



**Судостроитель:** Jeanneau Prestige

**Год постройки:** 2011

**Модель:** Моторная яхта

**Цена:** **ЦЕНА ЯХТЫ ПО ЗАПРОСУ**

**Местонахождение:** United States

**Длина общая:** 60' 0" (18.29m)

**Ширина:** 16' 9" (5.11m)

**Макс. осадка:** 4' 3" (1.30m)

**Крейс. скорость:** 24 Kts. (28 MPH)

**Макс. скорость:** 28 Kts. (32 MPH)

Купить Miller Time — Jeanneau Prestige а также выбрать подходящую вам яхту из нашего каталога яхт вам поможет опытный яхтенный брокер Андрей Шестаков. На сегодняшний день компания Shestakov Yacht Sales Inc. имеет большое количество яхт в собственном списке продаж, а также тесно сотрудничает со всеми крупными яхтенными производителями по всему миру.

Для того чтобы купить яхту Miller Time — Jeanneau Prestige а также проконсультироваться по любому вопросу связанному с покупкой, продажей, чартером яхт позвоните по телефону **+7(918)465-66-44**.

# ОГЛАВЛЕНИЕ

---

ОГЛАВЛЕНИЕ	2
ХАРАКТЕРИСТИКИ	3
Обзор	3
Основная информация	3
Размеры	4
Скорость, вместимость и масса	4
Размещение	4
Корпус и палуба	4
Информация о двигателе	4
ПОДРОБНОЕ ОПИСАНИЕ	5
Descriptions	5
Исключения	12
Отказ от ответственности	12
ФОТОГРАФИИ	13
КОНТАКТЫ	25
Контактная информация	25
Телефоны	25
Время работы	25
Адрес	25

---

# ХАРАКТЕРИСТИКИ

---

## Обзор

---

Prestige is the "up and coming" yacht brand hitting the U.S. market. This 2011 vessel has been extremely well maintained and is ready for the new owner to jump aboard a begin cruising. Recently surveyed with all recommondations addressed. Also the owner has recently done the following:

- Complete Volvo service including impellers, filters, belts etc.
- Complete Generator Service
- All brand new batteries
- A/C serviced and upgraded
- Hull freshly waxed
- All new Zincs
- All fire extinguishers charged

This vessel has to put on you "must see" list with her long list of features:

- Volvo IPS propulsion
- ONLY 500 HOURS
- Bow Thruster
- Satellite Positioning
- Hydraulic Swim Platform
- Satellite TV
- Large Crew Quarters
- Galley aft
- Bow seating
- Large Cockpit
- Huge Engine Room -clean-clean-clean!!!

---

## Основная информация

---

Тип судна: Моторная яхта

Модельный год: 2011

Год постройки: 2011

Страна: United States

## Размеры

---

**Длина общая:** 60' 0" (18.29m)

**Ширина:** 16' 9" (5.11m)

**Макс. осадка:** 4' 3" (1.30m)

## Скорость, вместимость и масса

---

**Крейс. скорость:** 24 Kts. (28 MPH)

**Макс. скорость:** 28 Kts. (32 MPH)

**Водоизмещение:** 56000 Pounds

**Вместимость воды:** 212 Gallons

**Вместимость сточного бака:** 124 Gallons **Объем топливного бака:** 740 Gallons

## Размещение

---

**Всего кают:** 4

## Корпус и палуба

---

**Материал корпуса:** Fiberglass

## Информация о двигателе

---

**Двигатели:** 2

**Производитель:** Volvo

**Модель:** IPS 900

**Тип двигателя:** Inboard

**Тип топлива:** Diesel

---

# ПОДРОБНОЕ ОПИСАНИЕ

---

## Descriptions

---

### Salon

- 3 Main Entrance Sliding Door's
- Very Bright, 360° view of the Exterior
- Lateral Electric Window
- Large Bench Seating in U-Shape
- Retractable TV System
- Wood Flooring with Removable Carpet Runners
- Exceptionally Bright Interior Due to Numerous Windows
- Generous Interior Volume

### Dining

- Retractable Table Seats 6-8 People
- Wood Flooring with Removable Carpet Runners

### Galley

- Located Aft of the Saloon with Direct Access to the Cockpit
- Console/Bar Separates Galley from Saloon
- Fully Equipped: Refrigerator/ Freezer
- Icemaker
- Combination: Microwave/Conventional Oven
- Vitro Ceramic Stovetop-Hood
- Wood Floor
- Wine Rack

- 10 Drawer/Cabinet Storage

### *Lower Steering Station*

## **Steering Station**

- Lateral electric Window
- Adjustable Pilot Seat with Electric Controls
- Power Steering System with Adjustable Steering Wheel
- Console with Instrument Panel with Space for Two 14" Screens
- Defogger for the Windscreen
- Remote Windlass Control
- 2 Opening Hatches for Light and Ventilation
- 2 Windshield Wipers
- Excellent Visibility
- Dual E140 Wide Raymarine
- GPS, Chartplotter, Radar, Sonar
- Bow Thruster Control
- Volvo Joystick Docking System
- Volvo Engine Instruments
- Volvo Dynamic Positioning System

## **Master Stateroom**

- Central Transversal Cabin with Queen Centerline Bed
- Exceptional Light
- Sea View Through Windows in the Hull, with Integrated Opening Portholes
- Desk/Vanity
- Bedside Tables with Storage

- Sofa on Starboard Side
- Samsung LED TV/DVD
- Desk
- 14 Pull-out Drawers
- 2 Large Hanging Lockers
- En-suite Access to Private Head and Shower Compartment

### **Master Head**

- Double Sink with Mixed Tap
- Separate Shower
- Natural Ventilation and Extractor Fan
- Electric Quiet Flush Toilets
- Sea View Through Window in Hull
- 5 Drawer Vanity
- 3 Mirrored Door / Storage
- Large Windows
- Wood Flooring

### **Second Cabin ? Forward**

- Sea View Through Window in Hull, with Integrated Opening Portholes
- Queen Centerline Bed
- 2 Hanging Lockers
- Vanity, Storage
- 6 Drawer Storage
- Samsung LED TV
- Jensen Stereo/CD

- Large Windows
- En-suite Access to Private Head and Shower Compartment

### **Second Private Head & Shower Compartment**

- Sea View
- Sink with Mixing Tap
- Separate Shower
- Natural Ventilation and Extractor Fan
- Electric Quiet Flush Toilets
- Port Side Window
- Sky Light
- Wood Floors

### **Third Cabin- Starboard**

- Sea View Through Window in Hull, with Integrated Opening Portholes
- 2 Single Beds Convertible in Double Beds
- Hanging Locker
- Storage
- Direct Access to Head and Shower Compartment
- Window Starboard Side

### **Third Head Compartment-Guest**

- Access from the Cabin and from the Passageway
- Sink with Mixing Tap
- Natural Ventilation
- Quiet Flush Toilets



- 2 Hatches for Natural Light
- Wood Flooring

### **Crew Cabin**

- Directly Accessible from Cockpit
- Sea View Through Windows on the Transom
- Portholes opening to the Cockpit
- 2 Single Beds
- Large Storage Space

### **Crew Head**

- Access from the Cabin
- Sink with Mixing Tap
- Shower
- Natural Ventilation
- Electric Quiet Flush Toilets

### **Helm**

- 2 ACR Spotlights
- Dynamic Positioning System
- Volvo Joystick Docking System

### **Flybridge**

- GRP Central Arch with Support for Antennas and Radar, Bimini
- Remote Control Search Light
- Large Hatch for Cockpit Access

- Forward Sundeck: Mattress for Sunbath- Sofa to the Port Side
- Storage Locker – Life Raft Storage
- Central Wet Bar Including Sink and Electrical Grill
- Aft Dining Area: Large L-Shaped Bench Seating – Teck Table
- 2 Folding Armchairs
- Storage for Life Rafts – Storage Locker
- Fridge on Portside
- Central Steering Station with Instruments
- Power Assisted Steering System and Adjustable Steering Wheel

### **Electronics**

- 1 Raymarine E140-3D
- Raymarine ST70- Autopilot
- Raymarine Speed & Depth
- 3 Cameras
- 3 Receivers – SAT TV

### **Electrical System**

- Onan 21.5 kW EQD with 655 Hours
- Dual 50 amp 250V Shore Power Supply
- 24 volt DC System
- Electric Control Panel-Located in Passageway
- 2 Battery Chargers
- 2 Water Heaters- 16 Gallon

### **Mechanical Equipment**

---

- Cruise Air 78,000 BTU – 6 Units
- Bow Thruster – 20 HP
- Black & Gray Water Tanks
- Macerator Pump
- 4 Auto Bilge Pumps
- 1 Manual Pump

### **Engine Room**

- Twin Volvo IPS 900 – D11A-700HP Each

### **Cockpit**

- Teak Laid Large Cockpit
- Central Bench Seating with Access to the Passerelle on Port Side and Access to the Swim Platform on the Starboard Side
- Various Storage – Storage Locker for Mooring Lines, Teak Cockpit Table, 2 Folding Armchairs
- Electric retractable Sun Awning
- Electric Stern Rope Mooring Winch on Portside
- Third IPS Joystick Control Docking System
- Hot and Cold Shower
- Remote Control Telescopic Passerelle

### **Transom Platform**

- Spacious GRP/ Teak Laid Transom Platform
- Hydraulic Lifting Platform-Capacity 775lbs
- Telescopic Swim Ladder
- Tender AB 12' with E-Tec 40hp Engine

## Forward Deck

- Reversible Windlass – 2000w with Remote Control
- Stainless Steel Steamhead
- 2 Deck Hatches give Access to the Anchor Locker
- Forward Deck Bench Seating with Retractable Bimini
- Stainless Steel Fairleads and Cleats
- Stainless Steel Pulpit with Supports for 8 Fenders
- Front Bench Seats, with Retractable Bimini

## Исключения

---

При продаже яхты исключаются личные вещи владельца.

## Отказ от ответственности

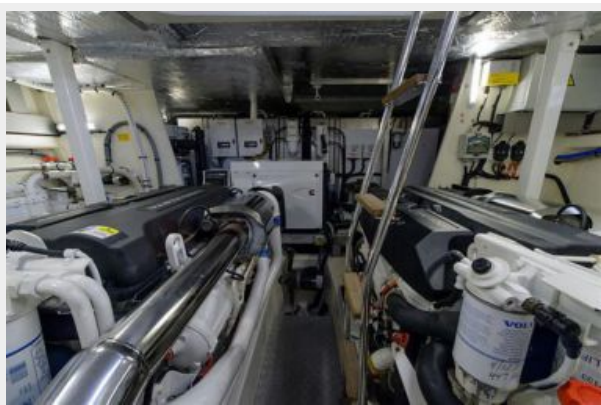
---

Компания предоставляет описание судна или яхты добросовестно, но не может гарантировать точность этой информации, а также не ручается за техническое состояние. Покупатель должен проинструктировать своих агентов или оценщиков исследовать представленную информацию более подробно, по собственному желанию. Продажа судна или яхты, изменение цены или снятие с продажи будет происходить без предварительного уведомления.

# ФОТОГРАФИИ



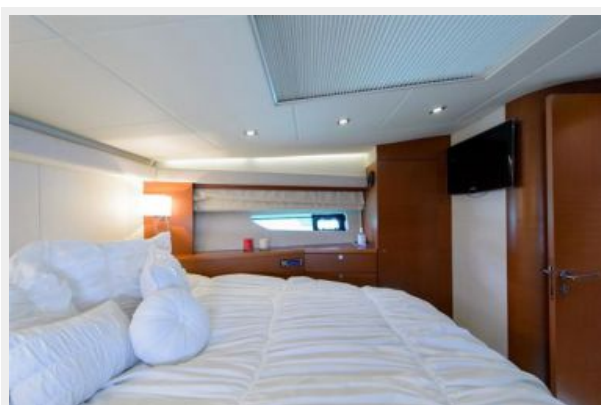
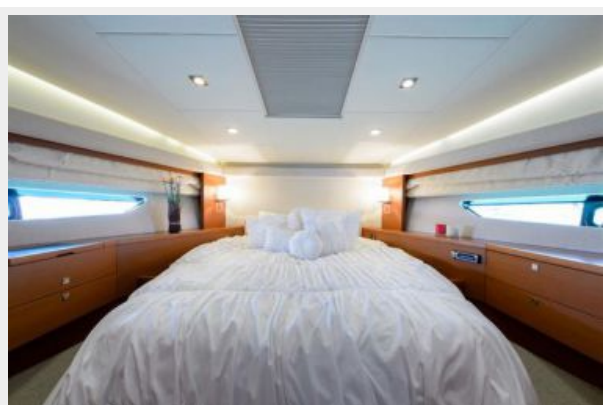


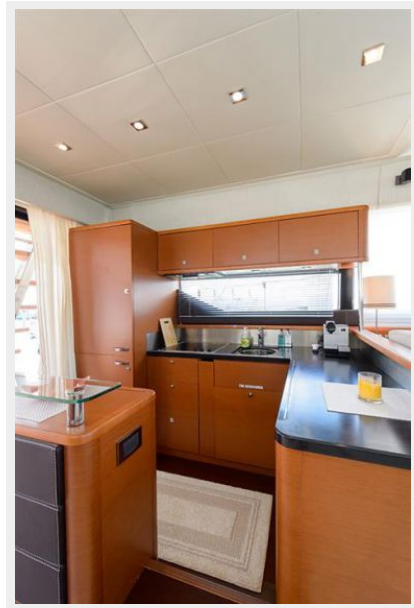


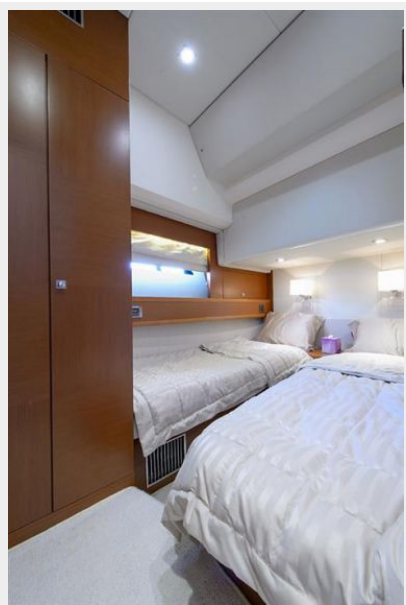








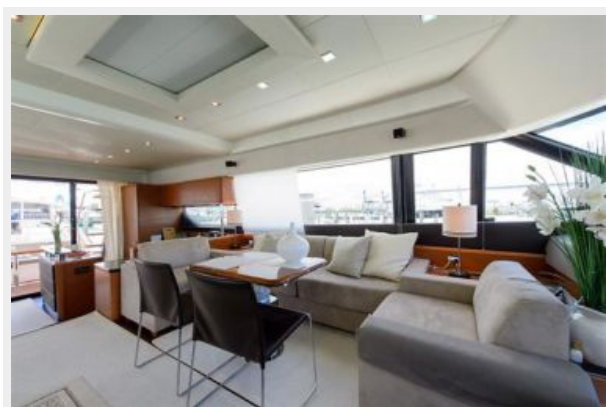














# КОНТАКТЫ

---

Андрей Шестаков (Andrey Shestakov) – ведущий яхтенный брокер отдела продаж яхт и судов компании Shestakov Yacht Sales Inc. Официальный представитель Shestakov Yacht Sales Inc. для русскоговорящих клиентов в центральном офисе компании в Майами/Форт Лодердейл/Флорида/США.

## Контактная информация

---

Email: [andrey@shestakovyachtsales.com](mailto:andrey@shestakovyachtsales.com)

Web: [shestakovyachtsales.com](http://shestakovyachtsales.com)

## Телефоны

---

Краснодарский край: **+7(918)465-66-44**

США, Майами, Флорида: **+1(954)274-4435**

## Время работы

---

Понедельник – Суббота: **9:00 - 21:00**  
EDT

Воскресенье: **Закрето**

## Адрес

---



Harbour Towne Marina, 850 NE 3rd St,  
STE 213, Dania, FL 33004