

SUN DAZE — ALBIN



Builder: ALBIN

LOA: 43' 0" (13.11m)

Year Built: 1979

Min Draft: 4' 1" (1.24m)

Model: Trawler

Price: PRICE ON APPLICATION

Location: United States

Our experienced yacht broker, Andrey Shestakov, will help you choose and buy a yacht that best suits your needs **Sun Daze — ALBIN** from our catalogue. Presently, at Shestakov Yacht Sales Inc., we have a wide variety of yachts available on our sale's list. We also work in close contact with all the big yacht manufacturers from all over the world.

If you would like to buy a yacht **Sun Daze — ALBIN** or would like help answering any questions concerning purchasing, selling or chartering a yacht, please call **+1(954)274-4435**

TABLE OF CONTENTS

TABLE OF CONTENTS	2
SPECIFICATIONS	3
Overview	3
Basic Information	4
Dimensions	4
Speed, Capacities and Weight	4
Accommodations	5
Hull and Deck Information	5
Engine Information	5
PHOTOS	6
CONTACTS	12
Contact details	12
Telephones	12
Office hours	12
Address	12

SPECIFICATIONS

Overview

Rare single diesel with bow thruster version Albin 43 Classic!

The Albin 43 enjoys a great reputation for being a well built and sea kindly design. Built in Taiwan, this popular island or loop cruiser is a classic trunk cabin design with full walk around side decks and a solid fiberglass semi-displacement hull with a deep keel to protect the running gear. She handles as a heavy displacement vessel, with a dry comfortable ride and looks like a trawler should with her flared bow and sweeping sheer. Offering an impressive cruising range with 400 gals of fuel and her economical Ford Lehman diesel, it's hardly a surprise that this quality built trawler has been sought out by knowledgeable buyers for many years.

Sun Daze has a recently Awlgrippped hull, well maintained engine room, blister free bottom and a very clean and pleasant galley up interior. Boat Name Sun Daze Dimensions LOA: 42 ft 6 in LWL: 37 ft 11 in Minimum Draft: 4 ft 1 in Displacement: 30000 lbs Engines Engine 1: Engine Brand: Lehman Engine Type: Inboard Engine/Fuel Type: Diesel Engine Hours: 4500 Engine Power: 120 HP Tanks Fresh Water Tanks: (300 Gallons) Fuel Tanks: (400 Gallons) Holding Tanks: (60 Gallons) Electronics Depthsounder - Standard Horizon Autopilot - Simrad Compass - Danforth CD player - Jensen am/fm/cd Radar - Furuno Navigation center - Weems & Plath barometer and clock Plotter - Garmin 128 VHF - Uniden on bridge, Icom M422 at lower helm Inside Equipment Air conditioning - mermaid reverse cycle Bow thruster - vetus with dual controls Oven - Atwood 3 br cooktop Microwave oven Electric head - Raritan electric flush Refrigerator - Uline 110v Fresh water maker - Village marine (needs membrane) Electric bilge pump - 2 with hi water alarms Battery charger - New Prosine charger Electrical Equipment Shore power inlet - 2x30a Generator - Northern lights 5kw, 5k hours Outside Equipment/Extras Cockpit table Cockpit shower Electric windlass Covers Bimini Top

Vessel Walkthrough

Starting forward is the bright and comfortable forward stateroom with wide v berth and hanging/drawer storage on both sides. Just aft is the **split head arrangement** with a roomy stand up shower to starboard and a toilet/sink compartment to port. the toilet has been removed from this head but can be easily re-installed.

The electric panels are on the starboard side of the companionway steps leading up to the salon.

The Salon features a comfortable L-shaped settee to port and a roomy L-shaped galley to starboard. The lower helm is forward to starboard and there are sliding deck access doors on both sides. **The soft goods, teak parquet floor, and joiner work are all in great shape.**

Aft of the salon is the master stateroom with walk around queen berth aft and lots of storage both

sides. Forward to port is a big hang in locker and more drawers and shelves. The master head is ensuite to starboard and has a **Raritan electric head**, and stand up shower.

Brokers Comments

This boat present a great value for the buyer willing to paint the decks. Medical circumstances prevent this motivated seller from finishing the job.

A recent survey is available to qualified buyers, survey value is more than asking price.

Her decks, cabin house and interior bulwarks are due for painting. She is priced to sell and a lot of boat for the money!

Basic Information

Category: Trawler

Model Year: 1979

Year Built: 1979

Country: United States

Dimensions

LOA: 43' 0" (13.11m)

LWL: 37' 11" (11.56m)

Min Draft: 4' 1" (1.24m)

Speed, Capacities and Weight

Displacement: 30000 Pounds

Water Capacity: 300 Gallons

Holding Tank: 60 Gallons

Fuel Capacity: 400 Gallons

Accommodations

Total Cabins: 2

Hull and Deck Information

Hull Material: Fiberglass

Engine Information

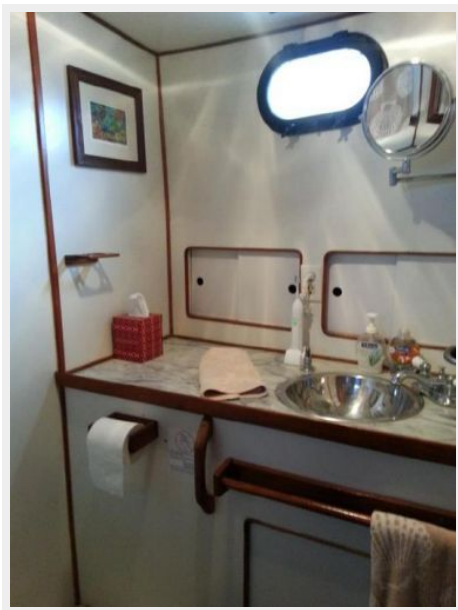
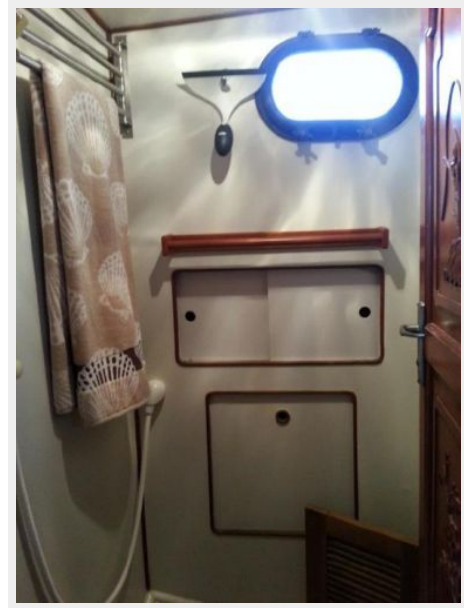
Engines: 1

Manufacturer: Lehman

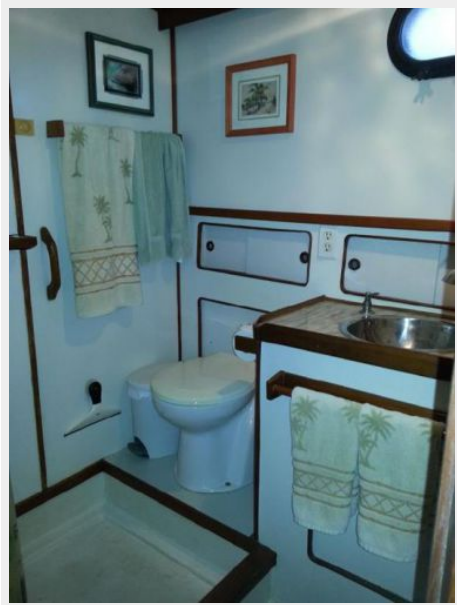
Engine Type: Inboard

Fuel Type: Diesel

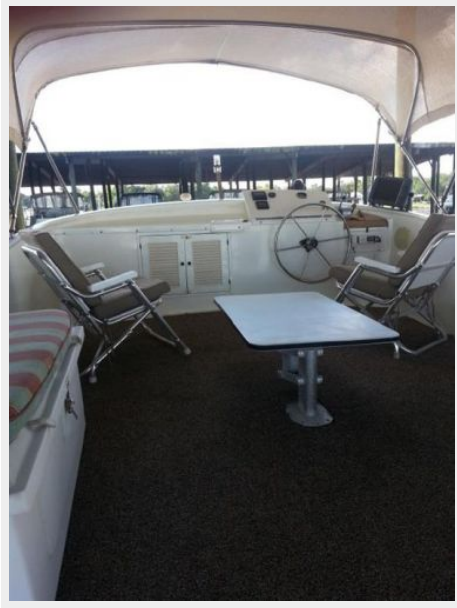
PHOTOS













CONTACTS

Andrey Shestakov, leading yacht broker of the sales department of Shestakov Yacht Sales Inc. Shestakov Yacht Sales Inc., the official representative of the Miami/Fort Lauderdale FL headquarters.

Contact details

Email: andrey@shestakovyachtsales.com

Web: shestakovyachtsales.com/en/

Telephones

USA: +1(954)274-4435

Office hours

Monday – Saturday: **9:00 - 21:00** EDT

Sunday: **closed**

Address



Harbour Towne Marina, 850 NE 3rd St,
STE 213, Dania, FL 33004