

JOINT ADVENTURE



Year Built: 2002

Model: Cruising Yacht

Price: PRICE ON APPLICATION

LOA: 36' (10.97mm)

Beam: 12.5

Max Draft: 3' 1" (0.94mm)

Cruise Speed: 22 Knots Kts. (25 MPH)

Max Speed: 30 Knots Kts. (35 MPH)

Our experienced yacht broker, Andrey Shestakov, will help you choose and buy a yacht that best suits your needs **JOINT ADVENTURE** — n/a from our catalogue. Presently, at Shestakov Yacht Sales Inc., we have a wide variety of yachts available on our sale's list. We also work in close contact with all the big yacht manufacturers from all over the world.

If you would like to buy a yacht **JOINT ADVENTURE** — n/a or would like help answering any questions concerning purchasing, selling or chartering a yacht, please call **+1(954)274-4435**

TABLE OF CONTENTS

TABLE OF CONTENTS	2
SPECIFICATIONS	5
Basic Information	5
Dimensions	5
Speed, Capacities and Weight	5
Accommodations	5
Hull and Deck Information	5
Engine Information	6
PHOTOS	7
Manufacturer Provided Image	7
In-Water View	7
Salon Looking Forward	7
Salon Looking Aft	7
Master Stateroom	7
Midcabin Convertible Lounge	7
Full Head W/VacuFlush Marine Toilet, Corian Countertop W/Sink, & Shower	8
Mid-cabin Lounge Converted To Double Berth	8
Stand-Up Shower W/Removable Head	8
Corian Countertop W/Sink	8
Full Galley W/Corian Countertops, Cherry Cabinetry, Panasonic Microwave, Kenyon 2-Burner Glasstop Stove, Sink, Fridge, Coolmate Refrigerator, & Coolmate Freezer	9
16,000 BTU Reverse Cycle AC/Heat	9
Coolmate Fridge & Freezer	9
Kenyon 2-Burner Glass Cooktop	9
Panasonic Microwave	9
Galley Sink	9
Raymarine VHF Marine Radio	10
Salon Ultraleather Sofa (Coverts To Double Berth)	10

Raymarine RL70C Plotter/Sounder/Radar	10
Raymarine ST7001 Autopilot	10
Raymarine ST60 Tridata Depth/Speed/Trip	11
Raymarine 4KW Open Array Radar	11
Clarion XMD1 Stereo/CD & Clarion XM665 6-Disc CD Changer	11
Ritchie Compass	11
Clarion Stereo Remote At Helm	11
Clarion Marine Speakers	11
AC/DC Electrical Panel Located In Salon	12
Panasonic TV Salon	12
Main DC Electrical Panel Engine Room	12
7KW Westerbeke Generator W/890 Hours	12
4-Marine Batteries	13
Intelli-Power 40 Amp Marine Batter Charger	13
Captains Bucket Seat W/Flip-Up Bolster For Standup Driving	13
Helm Controls & Electronics	13
Double Helm Seat For Guests	13
Helm Engine Gauges & Accessory Switches	13
Twin MerCruiser 370HP 8.1 S Horizon Engines W/V-Drives	14
Electric Engine Hatch	14
Hydraulic Trim Tabs	14
Running Gear & Underwater Exhaust	14
Engine Room Fire Suppression	14
Cockpit Looking Forward	14
Cockpit Wet-Bar W/Ice-Maker	15
Cockpit Ice-Maker	15
Aft Cockpit Seating (Also Includes Removable Table)	15
Transom Door	15
Bow W/Delta Plow Anchor & Stainless Roller	15

Stainless Windless Anchor & Spotlight	15
Spotlight Remote At Helm	16
Aft Storage Locker W/2-30 Amp Shore Power Cords	16
Large Extended Transom Swim Platform	16
Transom Stainless Fold-Down Swim Ladder	16
Full Aft Canvas Drop	16
Radar Arch W/Canvas Bimini Top	16
Manufacturer Provided Image	17
Spacious Foredeck W/Stainless Bow-Railing	17
Manufacturer Provided Image	17
CONTACTS	18
Contact details	18
Telephones	18
Office hours	18
Address	18

SPECIFICATIONS

Basic Information

Category: Cruising Yacht

Sub Category: Express

Model Year: 2002

Year Built: 2002

Dimensions

LOA: 36' (10.97mm)

Beam: 12.5

Max Draft: 3' 1" (0.94mm)

Speed, Capacities and Weight

Cruise Speed: 22 Knots Kts. (25 MPH)

Max Speed: 30 Knots Kts. (35 MPH)

Water Capacity: 55 Gallons

Holding Tank: 35 Gal Gallons

Fuel Capacity: 250 Gal Gallons

Accommodations

Total Cabins: 2

Total Berths: 3

Sleeps: 6

Total Heads: 1

Hull and Deck Information

Hull Material: Fiberglass

Deck Material: Fiberglass

Hull Configuration: Deep Fin

Hull Color: WHITE

Engine Information

Engines: 2

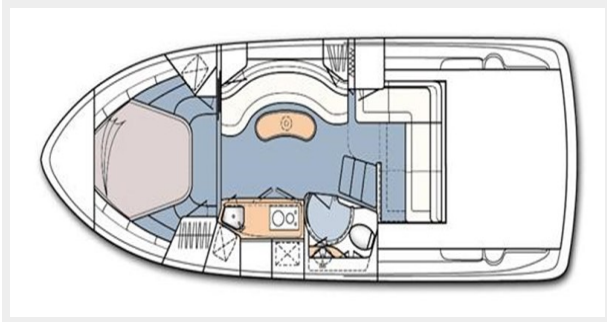
Manufacturer: Mercruiser

Engine Type: Inboard

Fuel Type: Gas

PHOTOS

Manufacturer Provided Image



In-Water View



Salon Looking Forward



Salon Looking Aft



Master Stateroom



Midcabin Convertible Lounge



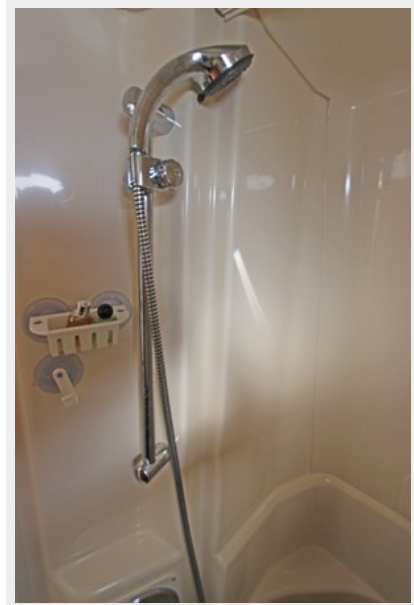
Mid-cabin Lounge Converted To Double Berth



Full Head W/VacuFlush Marine Toilet, Corian Countertop W/Sink, & Shower



Stand-Up Shower W/Removable Head



Corian Countertop W/Sink



16,000 BTU Reverse Cycle AC/Heat



Full Galley W/Corian Countertops, Cherry Cabinetry, Panasonic Microwave, Kenyon 2-Burner Glasstop Stove, Sink, Fridge, Coolmate Refrigerator, & Coolmate Freezer



Coolmate Fridge & Freezer



Kenyon 2-Burner Glass Cooktop



Panasonic Microwave



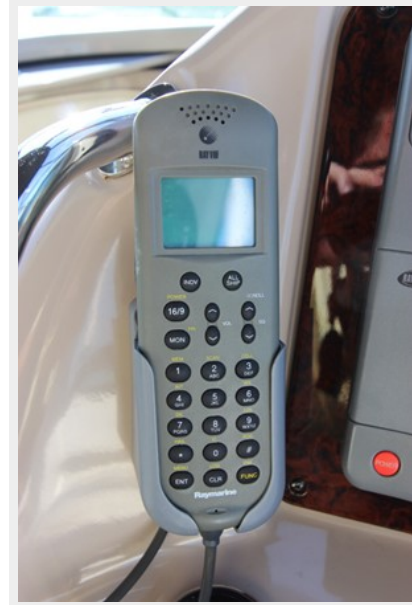
Galley Sink



Salon Ultraleather Sofa (Coverts To Double Berth)



Raymarine VHF Marine Radio



Raymarine ST7001 Autopilot



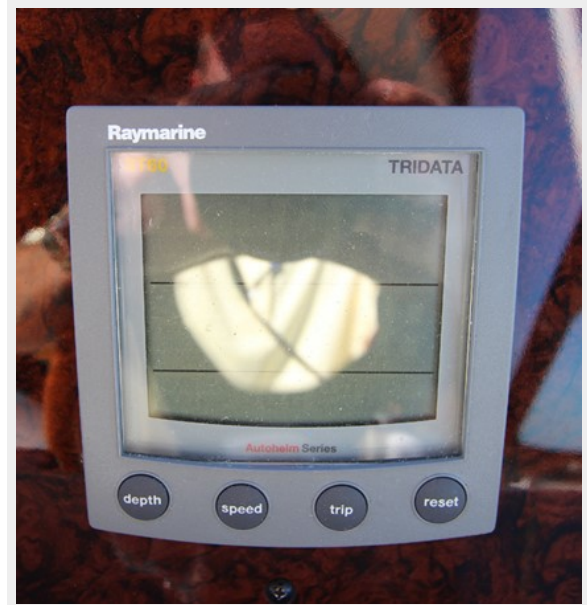
Raymarine RL70C Plotter/Sounder/Radar



Raymarine 4KW Open Array Radar



Raymarine ST60 Tridata Depth/Speed/Trip



Ritchie Compass



Clarion XMD1 Stereo/CD & Clarion XM665 6-Disc CD Changer



Clarion Stereo Remote At Helm



Clarion Marine Speakers



AC/DC Electrical Panel Located In Salon

Panasonic TV Salon



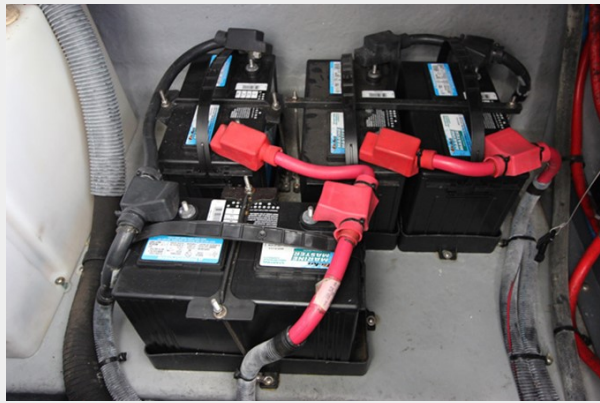
Main DC Electrical Panel Engine Room



7KW Westerbeke Generator W/890 Hours



4-Marine Batteries



Intelli-Power 40 Amp Marine Batter Charger



Helm Controls & Electronics



Captains Bucket Seat W/Flip-Up Bolster For Standup Driving



Double Helm Seat For Guests



Helm Engine Gauges & Accessory Switches



Electric Engine Hatch



Twin MerCruiser 370HP 8.1 S Horizon Engines W/V-Drives



Running Gear & Underwater Exhaust



Hydraulic Trim Tabs



Engine Room Fire Suppression



Cockpit Looking Forward



Cockpit Wet-Bar W/Ice-Maker



Cockpit Ice-Maker



Aft Cockpit Seating (Also Includes Removable Table)



Transom Door



Bow W/Delta Plow Anchor & Stainless Roller



Stainless Windless Anchor & Spotlight



Spotlight Remote At Helm



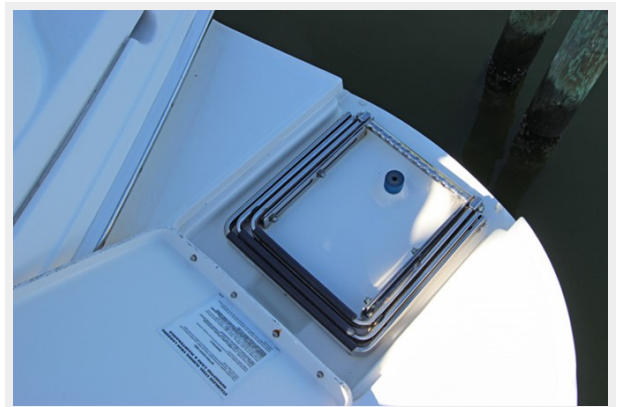
Aft Storage Locker W/2-30 Amp Shore Power Cords



Large Extended Transom Swim Platform



Transom Stainless Fold-Down Swim Ladder



Full Aft Canvas Drop



Radar Arch W/Canvas Bimini Top

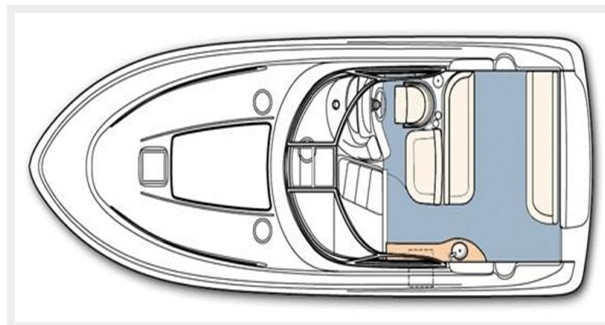


Manufacturer Provided Image

Spacious Foredeck W/Stainless Bow-Railing



Manufacturer Provided Image



CONTACTS

Andrey Shestakov, leading yacht broker of the sales department of Shestakov Yacht Sales Inc. Shestakov Yacht Sales Inc., the official representative of the Miami/Fort Lauderdale FL headquarters.

Contact details

Email: andrey@shestakovyachtsales.com

Web: shestakovyachtsales.com/en/

Telephones

USA: +1(954)274-4435

Office hours

Monday – Saturday: **9:00 - 21:00** EDT

Sunday: **closed**

Address



Harbour Towne Marina, 850 NE 3rd St,
STE 213, Dania, FL 33004