

VICTORIA W — HALLBERG-RASSY



Builder: HALLBERG-RASSY

Year Built: 1989

Model: Cruising Sailboat

Price: PRICE ON APPLICATION

Location: United Kingdom

LOA: 46' 4" (14.12m)

Beam: 14' 2" (4.32m)

Min Draft: 6' 2" (1.88m)

Cruise Speed: 9 Kts. (10 MPH)

Our experienced yacht broker, Andrey Shestakov, will help you choose and buy a yacht that best suits your needs **VICTORIA W — HALLBERG-RASSY** from our catalogue. Presently, at Shestakov Yacht Sales Inc., we have a wide variety of yachts available on our sale's list. We also work in close contact with all the big yacht manufacturers from all over the world.

If you would like to buy a yacht **VICTORIA W — HALLBERG-RASSY** or would like help answering any questions concerning purchasing, selling or chartering a yacht, please call **+1(954)274-4435**

TABLE OF CONTENTS

TABLE OF CONTENTS	2
SPECIFICATIONS	4
Overview	4
Basic Information	4
Dimensions	4
Speed, Capacities and Weight	4
Accommodations	4
Hull and Deck Information	5
Engine Information	5
DETAILED INFORMATION	6
Broker's Comments	6
Owner's Comments	6
Manufacturer's Comments	6
Construction	7
Machinery	7
Electrical Systems	8
Plumbing Systems	10
Tankage	10
Navigation Equipment	11
Domestic Equipment	12
Accommodation	13
Deck Equipment	13
Exclusions	16
Disclaimer	16
PHOTOS	17
CONTACTS	23
Contact details	23
Telephones	23

Office hours 23

Address 23

SPECIFICATIONS

Overview

From 1989 this is a early example of the hugely capable Hallberg 45 first of the Frers she set a new standard in bluewater cruising, Heavily updated and equipped for proper adventures.

Basic Information

Category: Cruising Sailboat

Sub Category: Center Cockpit

Model Year: 1989

Year Built: 1989

Country: United Kingdom

Dimensions

LOA: 46' 4" (14.12m)

LWL: 38' 0" (11.58m)

Beam: 14' 2" (4.32m)

Min Draft: 6' 2" (1.88m)

Speed, Capacities and Weight

Cruise Speed: 9 Kts. (10 MPH)

Displacement: 35273.96192 Pounds

Water Capacity: 264.172052 Gallons

Fuel Capacity: 155.86151068 Gallons

Accommodations

Total Cabins: 3

Total Berths: 6

Total Heads: 2

Hull and Deck Information

Hull Material: GRP

Deck Material: GRP

Hull Finish: Fiberglass

Hull Designer: German Frers

Engine Information

Engines: 1

Manufacturer: Volvo Penta

Model: TMD31A

Engine Type: Inboard

Fuel Type: Diesel

DETAILED INFORMATION

Broker's Comments

From 1989 this is an early example of the hugely capable Hallberg 45. The first of the Frers she was regarded as a trendsetter and set a new standard in blue water cruising. The owner an experienced sailor has maintained and equipped VICTORIA W for proper adventures keen to ensure a high level of built in redundancy with back-ups for the many of the vital systems.

Owner's Comments

Being from the Netherlands, water is always close to our genes. Once my work, family, distance to water and financial means allowed me to think about buying a sailing boat, I bought a 36 feet yacht only to discover that our real satisfaction came from spending the weekends away from our home, on the water, and our holidays around the Balearic islands on a second home. She had to be a safe, reliable cruising boat, being capable of being handled by the family (three of us). Fortunately I found a 4 year old Hallberg-Rassy 45/009 for sale by a first owner and prepared for ocean sailing, so I sailed from Antibes to my harbour in Spain, a few miles south of Barcelona in 1993. We sailed on the weekends, with holidays to the Balearics with the family and friends, for 15 years. We have constantly improved her onboard equipment and have become more experienced ourselves; I got my captain's license. Retirement allowed for a major refit in 2007 and four of us sailed from Barcelona to St. Maarten in the Caribbean. Two of us sailed the boat for three winter seasons, to all the islands - from Trinidad to the Virgin Islands, and myself and two professional sailors returned to Barcelona soon after. I continued to sail the Balearic islands, Croatia and the Rias Bajas in Spain until last week when I sailed to Lymington, UK. Age and the family having different projects told me I had to make a decision and find a new owner who hopefully will enjoy the yacht as much as we did.

Note: Work done in 2007 and equipment installed in preparation for transatlantic sail program for the next 3 years.

Manufacturer's Comments

Hallberg-Rassy 45 was built during 1989 - 1996. A total of 71 hulls were built.

When the HR 45 was launched in 1989 it was a trendsetter. This was the first Hallberg-Rassy designed by Germán Frers. The HR 45 introduced an external lead keel, sturdy hull stiffener along and across the boat, between the floor and the keel, which reinforces the construction

considerably. In addition it introduced a hull insulated with Divinycell foam core, which not only insulates from heat and cold, it also ensures an even firmer hull with a smooth inside, in contrast to the stringers of old days. The HR 45 combined all Hallberg-Rassy's traditional hallmarks, like style, sturdiness, comfort, fine woodwork, thorough technical installations and an ample tank capacity with sailing characteristics unsurpassed for a sailing boat of this type. The Hallberg-Rassy 45 claimed overall victory in the ARC over the Atlantic, in competition with a range of vessels from Whitbread boats and racers/cruisers to smaller family style boats.

Construction

RCD Status: Our understanding is that the yacht is exempt from the essential safety requirements of Directive 94/25EC (Recreational Craft Directive) as she was built and placed into use within the EU prior to 1998.

Hull, Deck & Superstructure Construction:

- Hull in insulated GRP laminate with Divinycell core above the waterline.
- Hull and keel area are strengthened by a longitudinal and lateral stiffening grid.
- Hull treatment (osmosis prevention) (2007).
- Deck in GRP with Divinycell core. New teak laid (2007).
- Superstructure in GRP with Divinycell core.
- Teak and stainless steel external trim, with brass strip rubbing strake.
- Transport height without windscreen: 12'10" / 3.90m.

Keel & Rudder:

- Externally bolted lead long fin keel, attached to GRP moulding with deep bilge sump.
- Semi-skegged GRP rudder with 75mm stainless steel stock.

Machinery

Engine & Gearboxes:

- 1 x Volvo Penta TMD31A 94hp 4 cylinder diesel engine.

- MS4A single lever gearbox.
- Noise reduction Vetus wall in engine room (2007).
- Additional back-up diesel filters (side by side).
- Spare Volvo Penta filters for oil and fuel.

Maintenance & Performance:

- Cruising Speed: 8.5 knots (under engine).

Propulsion & Steering:

- Folding 3-blade Brunton propeller (cavitation reduction) with rope cutter.
- Spare folding 4-blade max-prop reserve in shower compartment.
- Volvo water lubricated stern gland.
- The two automatic pilots Raymarine 7001 and Raymarine 6001 are installed near the ruddershaft one with a Simrad drive unit and one with the Raymarine . The 6001 at the back has been disconnected as to avoid extra friction but can be easily connected as a back up.
- Hide-covered 100cm diameter wheel steering with wire linkage.
- Max Power bow thruster 24v 2007.

Other Mechanical:

- Extra starter motor and generator for engine.

Electrical Systems

Voltage Systems:

- 220v domestic circuit via genset/shorepower.
- 24v and 12v domestic circuits. 12v engine circuits.
- 10 x 220v outlets (white) with 9 x connected to Mastervolt combi and 1 x outlet as indicated, to shore power.

- 4 x Lighter sockets (2 x at chart table, 2 x on deck).

Battery Banks:

- 4 x 140Ah 12v domestic batteries (joined to produce 280Ah at 24v) June 2014.
- 1 x 120Ah 12v battery for engine May 2012.
- 1 x 90Ah 12v battery for genset start 2010.
- 2 x Backup batteries for Max power bow thruster in fore cabin – 24v (June 2014).

Note: All batteries located beneath sole boards near chart table except for generator start which is in the aft cabin.

Battery Chargers:

- Mastervolt battery monitor.
- C-tek charger under stairway for starter battery.
- Victron 45 amp charger (1989).
- Combi Mastervolt charger with distant monitor 24-2000 (2007).

Alternators:

- 1 x 12v alternator.
- 1 x 24v alternator.

Generator:

- Mastervolt Whisper 8 generator.

Shore Power:

- 220v ring main with RCD protection and switch panel.

Plumbing Systems

Fresh Water & Water Heating System:

- Pressurised hot and cold water system.
- Water heated via calorifier and immersion heater new element June 2014.
- Hot water boiler (2007).
- New element 2014

Watermaker:

- Dessolator 60 litres per hour watermaker 24v – 220v (2007).
- Spare watermaker pulleys.

Bilge Pumps:

- 1 x Electrical bilge pump with automatic pressure switch.
- Manual Jabsco bilge pump in cabin (new membranes in 2007).
- Jabsco manual cockpit bilge pump (installed in 2007).
- 2-way valve at intake of Volvo Penta engine to allow bilge pumping and clean water wash through of cooling system.

Tankage

Fuel:

- Total capacity of 590 litres in 2 x stainless steel tanks.

Fresh water:

- Total capacity of 1,000 litres in 2 x GRP tanks under cabin sole.

Grey/Blackwater holding tanks:

- Forward waste tank fitted with extraction (2007).

Gas:

- 2 x Gas bottles (Caribbean) (2010, empty).
- 1 x repsol gas bottle full
- Copper gas connection from bow to galley replaced in 2007.
- Gas hose from bottle to copper hose needs to be replaced.

Navigation Equipment

- Special inox. Antenna mast (2007).
- Ray marine chartplotter E80
- Ray tech navigator v6-0
- Garmin chartplotter 2006c
- Raymarine smartpilot control st-7001
- Raymarine wind –tridata ST60.
- Raymarine smartpilot st 6002(back up)
- Raymarine cordless remote control for pilot
- Sailor VHF/DSC
- Sailor MF/HT(currently requires servicing)
- Raymarine tridata ST60 raymarine graphic display.
- Icom VHF –GMDSS
- Raymarine man overboard
- Iridium sailor Shipmate RS-8110
- Raymarine radar RV218 24 miles
- Charts – Navionics for Adriatic – Europe, Mediterranean, Atlantic, Caribbean, South America.

- Lokata Navtex

Domestic Equipment

Galley:

- 2-burner gimballed gas hob with oven and grill.
- Microwave oven.
- Fridge.
- Additional large freezer under saloon seating port side(2007).
- Twin stainless steel sinks.
- The foot pump for sea water in the galley has been disconnected to allow the sink water outlet for drinking water, from the water maker.

Heads/Showers:

- 2 x Electric WCs (2007).
- Fresh water flushing although forward heads can also be salt water flushing
- Deck shower with hot & cold water.

Heating & Ventilation:

- 6 x Hella turbo fans in saloon, heads compartments etc.

Entertainment:

- JVC stereo.
- Samsung flat screen TV.

Lighting:

- 2 x 220v table lamps.

- Interior lighting (2007).

Accommodation

Summary of Accommodation:

- The interior is finished in hand-rubbed, silk finished mahogany throughout.
- The floor is teak and inlaid with holly stripes, and is covered by a removable carpet.
- The upholstery is red and replaced 2010
- Blue curtains and blinds cover the windows, skylights and portholes.
- The heads have porcelain hand basins and teak gratings.
- Remodeling of middle berth (can be restored as 2 x berths) (2007).
- Floors redone (2007).
- 5 x Lewmar hatches (2007); hatch covers (2014).
- Ocean air hatch blinds
- Cockpit covers (2010).
- Hatches with screen (2007).

Deck Equipment

Rig:

- Mast head cutter rig.
- Selden aluminium alloy spars with deck stepped main spar and 3 sets of spreaders.
- Checkstays for use with cutterstay.
- S/S standing rigging.
- Standing rigging largely replaced in 2010
- Cutter stay and one check stay replaced September 2014
- 1 x Bamar headsail furler on staysail.
- 1 x Reckman furler on yankee/genoa.

- Spinnaker and jockey poles.
- Spinnaker kit.

Winches:

- 2 x Lewmar 66CST genoa sheet winches one electric and one manual
- 2 x Lewmar 43CST mainsheet winches. Manual and self-tailing.
- 2 x Lewmar 44CST halyard winches. Manual and self-tailing (at mast).
- 1 x Lewmar 48CST halyard winch. Manual and self-tailing (on boom).
- 1 x Lewmar 8C spinnaker-pole lift winch. Manual (at mast).
- 1 x Lewmar 66CST electric winch.

Sails:

- New Quantum sails (old North sails re-stitched as back-up) (2007).
- Sail plan jib 140% sail cloth Ocean Dacron.
- 1 x 100% jib rarely used
- Small storm sail (2007).
- Mainsail with extra reef for heavy weather (2007).
- Sail area with jib: 94.57m² / 1,018 sq ft.
- Gennaker with suffer

General:

- Pulpit, pushpit, guardrails, boarding gates.
- New guard wires 2010
- Boarding ladder at the bow in anchor pit.
- Windscreen at front of companionway with opening centre section.
- Teak foldaway cockpit table.

- Swim platform on stern (2007).
- Towing rope at bow and stern.
- 2 x Air horns attached to cockpit hatch.
- Multiple water hose connections in red bag, and electric connections in hatch at cockpit.
- Cold water shower on transom

Anchoring & Mooring Equipment:

- Lofrans 1500W anchor windlass with remote control in the cockpit.
- CQR and Danforth anchor (2007).
- 60m stainless steel anchor chain for smooth handling (2007).
- Warps & Fenders.
- Extra 17kg anchor in bow to allow for being attached after main CQR anchor.
- Anchor ball.
- 2 x Mooring lines with stainless steel springs.

Covers, Canvas & Cushions:

- Complete set of cockpit cushions.
- Bimini sun awning and frame.
- Windscoop breeze catcher.
- Sprayhood.
- Cockpit tent.
- Forward seat attachment for easy watch keeping and sailing.

Tender & Outboard:

- Caribbean dinghy 2.8m with 7hp Suzuki outboard (2007).
- Tender has extension gas throttle pole and 12 litre tank.

Safety Equipment:

- EPIRB – 2017, needs to registered to new owner.
- 2 x life rafts (service required)
- Life lines for deck attachment.
- 1 x Rescue light.
- 1 x Dan buoy.
- 7 x Life vests -275 - cylinders from 2013.
- Flares - expiration date 2018, all seas.
- Medical kit - all seas.
- Metal bucket
- Rubber bucket.

Fire-fighting equipment:

- 2 x Extinguishers inspected in 2013 - 2 at cabin entrances (2000).
- 2 x Fire blankets.

Exclusions

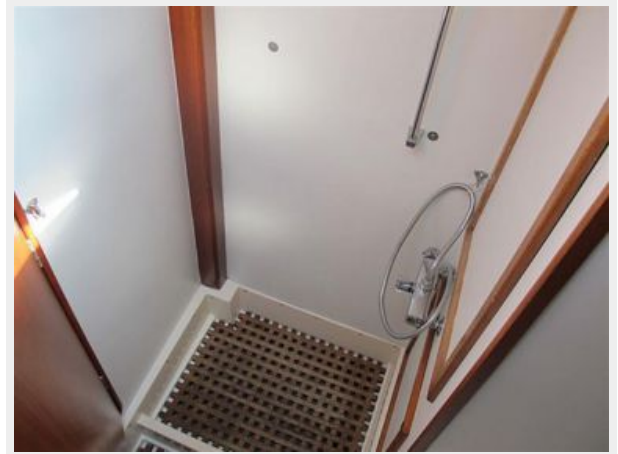
Owner's personal belongings.

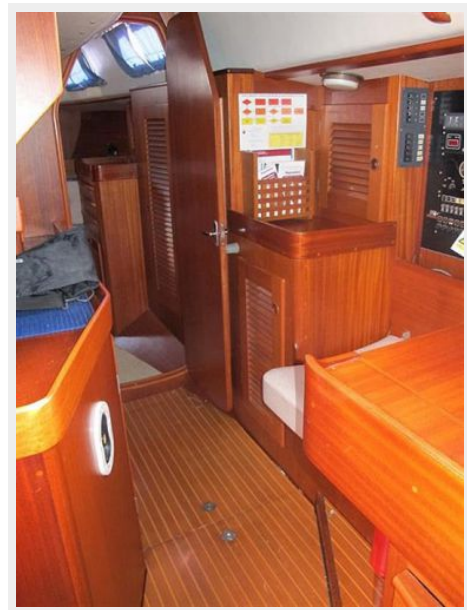
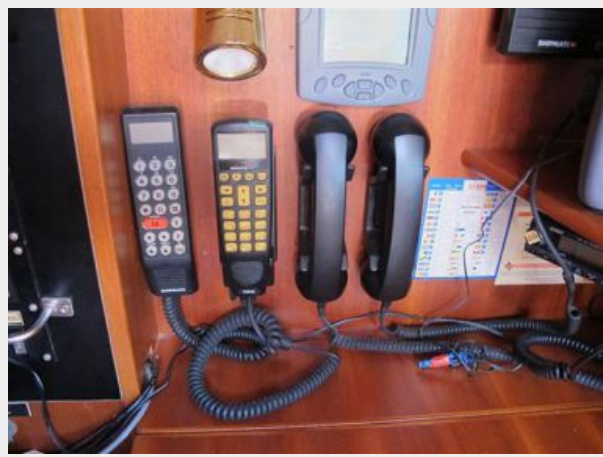
Disclaimer

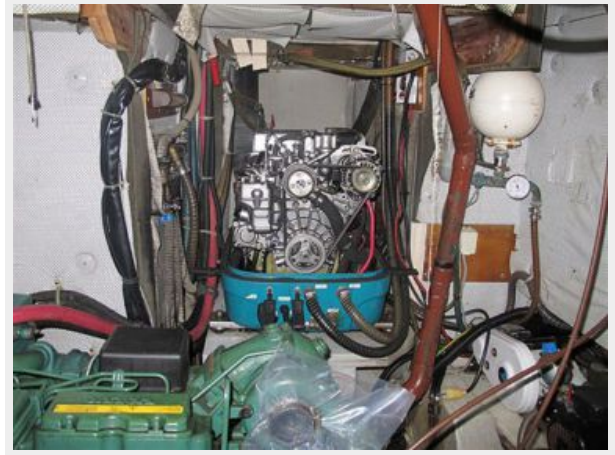
The Company offers the details of this vessel or yacht in good faith but cannot guarantee or warrant the accuracy of this information nor warrant the condition of the vessel. A buyer should instruct his representatives, agents, or his surveyors, to investigate such details as the buyer desires validated. This vessel or yacht is offered subject to prior sale, price change, or withdrawal without notice.

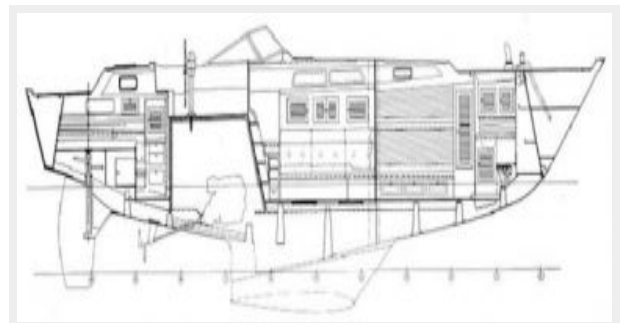
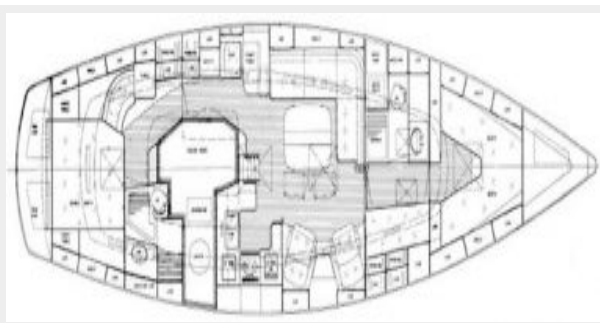
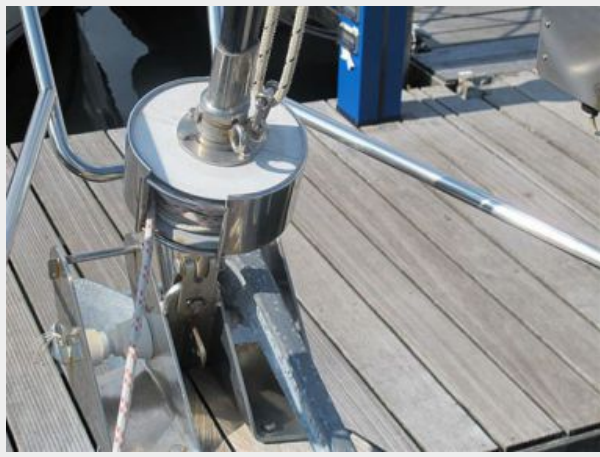
PHOTOS

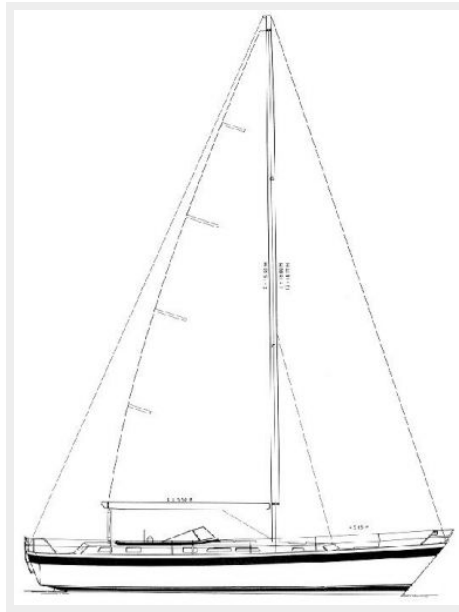












CONTACTS

Andrey Shestakov, leading yacht broker of the sales department of Shestakov Yacht Sales Inc. Shestakov Yacht Sales Inc., the official representative of the Miami/Fort Lauderdale FL headquarters.

Contact details

Email: andrey@shestakovyachtsales.com

Web: shestakovyachtsales.com/en/

Telephones

USA: +1(954)274-4435

Office hours

Monday – Saturday: **9:00 - 21:00** EDT

Sunday: **closed**

Address



Harbour Towne Marina, 850 NE 3rd St,
STE 213, Dania, FL 33004