

SERENA — GRAND BANKS



Builder: GRAND BANKS

Year Built: 1986

Model: Trawler

Price: PRICE ON APPLICATION

Location: United States

LOA: 36' 4" (11.07m)

Beam: 12' 2" (3.71m)

Max Draft: 4' 2" (1.27m)

Cruise Speed: 8 Kts. (9 MPH)

Max Speed: 9 Kts. (10 MPH)

Our experienced yacht broker, Andrey Shestakov, will help you choose and buy a yacht that best suits your needs **Serena — GRAND BANKS** from our catalogue. Presently, at Shestakov Yacht Sales Inc., we have a wide variety of yachts available on our sale's list. We also work in close contact with all the big yacht manufacturers from all over the world.

If you would like to buy a yacht **Serena — GRAND BANKS** or would like help answering any questions concerning purchasing, selling or chartering a yacht, please call **+1(954)274-4435**

TABLE OF CONTENTS

TABLE OF CONTENTS	2
SPECIFICATIONS	5
Overview	5
Basic Information	5
Dimensions	5
Speed, Capacities and Weight	6
Accommodations	6
Hull and Deck Information	6
Engine Information	6
DETAILED INFORMATION	7
Interior Layout & Features	7
Electrical Systems	7
Exterior Equipment & Features	7
Electronics & Navigation	8
Recent Updates & Maintenance	8
Mechanical & Engine Room	9
Brokerage	9
Exclusions	9
Disclaimer	9
PHOTOS	11
Bow on Exterior	11
Dyer (dock box)	11
Bow	11
Stern	11
Profile Running	12
Dinghy & Davit Detail	12
Walk Around Decks	12
Bow Deck	12

Generator	12
Engine Room Detail	12
Engine Room Detail	13
Engine Room Detail	13
Engine Room Detail	13
Port Side Deck	13
Dyer Cabin Top Detail	13
F/B Helm	14
F/B Seating	14
F/B Aft	14
Steady Sail & Boom	14
bow cabin with ensuite head & shower	14
Bow Deck	14
bow/guest head	15
main saloon/galley looking aft	15
looking aft from the bow cabin	15
main saloon dinette starboard side	15
main saloon port side	15
master stateroom looking aft	15
master head & shower	16
master stateroom looking forward	16
master double berth	16
wheelhouse overhead electronics	16
exterior with sun screens	16
CONTACTS	17
Contact details	17
Telephones	17
Office hours	17
Address	17

SPECIFICATIONS

Overview

Condition of her teak (over fiberglass) decks, gloss Cetol, interior and engine room are outstanding for her year.

- Ready to go cruising. Dialed in
- batteries are new 2014
- electronics updated
- hoses, belts, maintenance up to date
- bottom painted 7/2013
- canvas and cushions look good
- Gloss Cetol (has covers) and teak decks are very good
- new batteries 2014

Owners have a larger boat under contract. Very motivated to sell and this boat is a sweetheart!

Photos are fresh

Basic Information

Category: Trawler

Sub Category: Aft Cabin

Model Year: 1986

Year Built: 1986

Country: United States

Dimensions

LOA: 36' 4" (11.07m)

LWL: 35' 0" (10.67m)

Beam: 12' 2" (3.71m)

Max Draft: 4' 2" (1.27m)

MFG Length: 36' 0" (10.97m)

Speed, Capacities and Weight

Cruise Speed: 8 Kts. (9 MPH)

Max Speed: 9 Kts. (10 MPH)

Displacement: 23300 Pounds

Water Capacity: 170 Gallons

Holding Tank: 50 Gallons

Fuel Capacity: 400 Gallons

Accommodations

Total Cabins: 2

Total Heads: 2

Hull and Deck Information

Hull Material: Fiberglass

Engine Information

Engines: 1

Manufacturer: Ford Lehman

Model: 2725E

Engine Type: Inboard

Fuel Type: Diesel

DETAILED INFORMATION

Interior Layout & Features

- Two staterooms, two heads with the galley up in the saloon to port. Lower helm with side deck access. Aft stateroom has a double bed to starboard and single berth to port with a chest of drawers between.
- Plenty of opening ports/hatches/doors & center windshield
- 3 marine air cond units with heat
- hot water heat exchanger and 110
- mounted clock & barometer
- Seaward Princess 3 burner electric stove & oven
- Grunert 120 vt holding plate refrigeration
- U line saloon ice maker (freezer only)
- Rival microwave oven
- Jensen AM/FM/CD stereo
- 2 fireboy carbon monoxide detectors
- teak parquet floors throughout
- storage cabinet above saloon ice maker
- galley fold out trash bin
- large teak drop leaf dining table with 3 storage areas

Electrical Systems

- Dockside wiring 50 amp with fresh clean cord
- 12vt ships service w/ 3 batteries in boxes (new 2014)
- Westerbeke 8KW generator with 3170 hours
- Sentry 60 amp auto battery charger
- Statpower Prowatt 800 inverter
- 2 auto bilge pumps, 1 manual

Exterior Equipment & Features

- Condition: The teak decks are over cored fiberglass and are fair with no missing plugs noticed. The exterior gloss is very good on the gel coat.
- aluminum mast & boom with steadying sail and cover
- dinghy davits on transom
- outboard davit and tackle on stern
- Dyer dinghy on boat deck in cradle with cover
- oversize anchor platform with rails/roller
- 45# CQR anchor, 120' 3/8" chain and 150' 3/4" rode

- Windlass Lofrans Tigress 12vt DC
- mast spreader lights
- Bimini top, toast sunbrella
- toast sunbrella covers for bridge console and seats
- weather clothes & covers for dinghy and brightwork
- aft deck shower
- fresh & sea water washdown on the bow
- teak swim platform with ladders
- outboard motor bracket on F/B rail
- 3 windshield wipers with washers
- navigation lights, updated
- exterior window sun screens, white (see pic installed)

Please note that the inflatable dinghy and o/b do not convey. The Dyer dinghy goes with the boat.

Electronics & Navigation

- autopilot, Robertson interfaced/ both stations
- Raymarine plotter C-140 14" GPS/plotter new in 2013
- VHF radio, both helms , lower West 280 with DSC
- F/B new Raymarine VHF with DSC
- horn, compressed air
- Raymarine RT60 depth new
- lower helm RL70 Raymarine plotter and radar
- Ritchie binnacle style compass
- spotlight, remote. both stations

Recent Updates & Maintenance

- Serena was hauled and bottom painted 7/2013
- Main engine and generator received heat exchanger boil out, belts, hoses and impellers in 2013.
- Main engine & transmission oil coolers replaced in 2013
- new water pump

- all waste system hoses new in 2012
- New Johnson electric head forward in 2013
- see electronics updated section
- Grunert refrig system updated 110/12vt
- all fire ext replaced or recertified
- F/B windscreen replaced 2013
- GFI protected outlets added 2013
- LED reading lights added in saloon area 2013
- stern light added to the davit as not to be blocked by the dinghy 2014
- 32" Samsung HDTV added in saloon 2013
- shower sump pump replaced 2013
- engine room exhaust fans replaced 2013
- white textleaten covers for the saloon windows and interior screens for windows and doors added 2013
- 3 new batteries 2014
-

Mechanical & Engine Room

- Racor fuel filter with vacuum gauge for main engine and gen set
- engine alarm system
- Fireboy 20 lb 1301 Halon system
- seacocks & strainers
- 3 marine air systems
- Borg Warner transmission 2.47:1 reduction
-

Brokerage

Please Read: The Company offers the details of this vessel in good faith but cannot guarantee or warrant the accuracy of this information nor warrant the condition of the vessel. A buyer should instruct his agents, or his surveyors, to investigate such details as the buyer desires validated. This vessel is offered subject to prior sale, price change, or withdrawal without notice.

Exclusions

Owner's personal belongings.

Disclaimer

The Company offers the details of this vessel or yacht in good faith but cannot guarantee or

warrant the accuracy of this information nor warrant the condition of the vessel. A buyer should instruct his representatives, agents, or his surveyors, to investigate such details as the buyer desires validated. This vessel or yacht is offered subject to prior sale, price change, or withdrawal without notice.

PHOTOS

Dyer (dock box)



Bow on Exterior



Bow



Stern



Dinghy & Davit Detail



Profile Running



Walk Around Decks



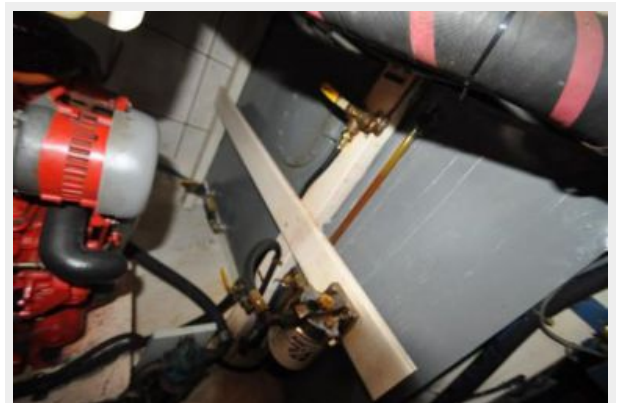
Bow Deck



Generator



Engine Room Detail



Engine Room Detail



Engine Room Detail



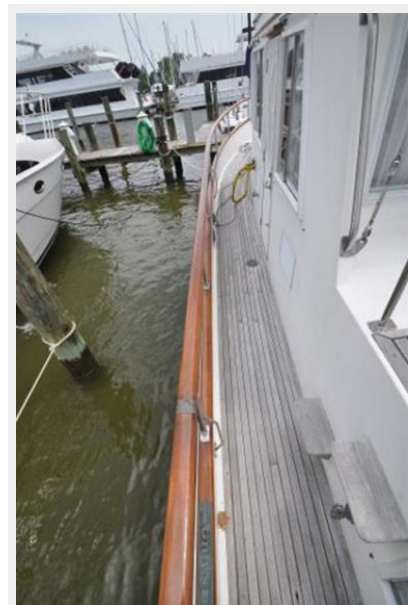
Engine Room Detail



Dyer Cabin Top Detail



Port Side Deck



F/B Helm



F/B Seating



F/B Aft



Steady Sail & Boom



bow cabin with ensuite head & shower

Bow Deck



bow/guest head



main saloon/galley looking aft



looking aft from the bow cabin



main saloon dinette starboard side



main saloon port side



master stateroom looking aft



master stateroom looking forward



master head & shower



master double berth



wheelhouse overhead electronics



exterior with sun screens



CONTACTS

Andrey Shestakov, leading yacht broker of the sales department of Shestakov Yacht Sales Inc. Shestakov Yacht Sales Inc., the official representative of the Miami/Fort Lauderdale FL headquarters.

Contact details

Email: andrey@shestakovyachtsales.com

Web: shestakovyachtsales.com/en/

Telephones

USA: +1(954)274-4435

Office hours

Monday – Saturday: **9:00 - 21:00** EDT

Sunday: **closed**

Address



Harbour Towne Marina, 850 NE 3rd St,
STE 213, Dania, FL 33004