

MEANT TO BE — PRINCESS YACHTS



Судостроитель: PRINCESS YACHTS

Год постройки: 2014

Модель: Моторная яхта

Цена: **ЦЕНА ЯХТЫ ПО ЗАПРОСУ**

Местонахождение: United States

Длина общая: 72' 0" (21.95m)

Ширина: 17' 8" (5.38m)

Макс. осадка: 4' 11" (1.50m)

Крейс. скорость: 32 Kts. (37 MPH)

Макс. скорость: 36 Kts. (41 MPH)

Купить **Meant to Be — PRINCESS YACHTS** а также выбрать подходящую вам яхту из нашего каталога яхт вам поможет опытный яхтенный брокер Андрей Шестаков. На сегодняшний день компания **Shestakov Yacht Sales Inc.** имеет большое количество яхт в собственном списке продаж, а также тесно сотрудничает со всеми крупными яхтенными производителями по всему миру.

Для того чтобы купить яхту **Meant to Be — PRINCESS YACHTS** а также проконсультироваться по любому вопросу связанному с покупкой, продажей, чартером яхт позвоните по телефону **+7(918)465-66-44**.

ОГЛАВЛЕНИЕ

ОГЛАВЛЕНИЕ	2
ХАРАКТЕРИСТИКИ	5
Обзор	5
Основная информация	5
Размеры	5
Скорость, вместимость и масса	5
Размещение	6
Корпус и палуба	6
Информация о двигателе	6
ПОДРОБНОЕ ОПИСАНИЕ	7
Vessel Information	7
Исключения	13
Отказ от ответственности	13
ФОТОГРАФИИ	14
Salon	14
Salon	14
Salon	14
Salon	14
Salon	14
Salon	14
Galley	15
Salon	15
Galley	15
Dinette	15
Master Stateroom	16
Master Stateroom	16
Master Stateroom	16
Master Stateroom	16

Master Head	17
Master Stateroom	17
Foward Stateroom	17
Foward Stateroom	17
Foward Stateroom	18
Forward Stateroom Head	18
Guest Stateroom	18
Guest Stateroom	18
Guest Stateroom Head	19
Guest Stateroom	19
Bow	19
Bow	19
Bow	20
Bow	20
Bow	20
Cockpit	20
Cockpit	20
Cockpit	20
Cockpit	21
Cockpit	21
Stern	21
Cockpit	21
Stern	22
Stern	22
Crew Stateroom	22
Stern	22
Crew Stateroom	23
Crew Stateroom	23
Crew Head	23

Engine Room	23
Engine Room	23
Engine Room	23
Engine Room	24
Engine Room	24
Engine Room	24
КОНТАКТЫ	25
Контактная информация	25
Телефоны	25
Время работы	25
Адрес	25

ХАРАКТЕРИСТИКИ

Обзор

- Recent maintenance performed
- Bottom painted September 2014
- Vessel detailed
- Engine hours 110. Generator hours 190.
- Prop speed applied to propellers

Recent custom upgrades:

- Installed spot free water filtration system.
- \$11,000 Marantz audio system with iPad integrated audio control
- Seakeeper Gyro Stabilizer

Основная информация

Тип судна: Моторная яхта

Модельный год: 2014

Год постройки: 2014

Страна: United States

Размеры

Длина общая: 72' 0" (21.95m)

Ширина: 17' 8" (5.38m)

Макс. осадка: 4' 11" (1.50m)

Скорость, вместимость и масса

Крейс. скорость: 32 Kts. (37 MPH)

Макс. скорость: 36 Kts. (41 MPH)

Водоизмещение: 82000 Pounds

Вместимость воды: 206 Gallons

Объем топливного бака: 1160 Gallons

Размещение

Всего кают: 3

Всего коек: 6

Всего ком. состава: 3

Каюты экипажа: 1

Койки экипажа: 2

Комм. состав экипажа: 1

Корпус и палуба

Материал корпуса: Fiberglass

Информация о двигателе

Двигатели: 2

Производитель: Caterpillar

Модель: C32A

Тип топлива: Diesel

ПОДРОБНОЕ ОПИСАНИЕ

Vessel Information

Recent maintenance performed

- Bottom painted September 2014
- Vessel detailed
- Engine hours 110. Generator hours 190.
- Prop speed applied to propellers

Recent custom upgrades:

- Installed spot free water filtration system.
- \$11,000 Marantz audio system with iPad integrated audio control
- Seakeeper Gyro Stabilizer

SALON

- HD/DVR Direct TV receivers with remote control
- U-shaped sofa with coffee table
- Sideboard unit incorporating LED TV/DVD/radio/MP3 with powered lift linked to surround sound system refrigerator, icemaker and bottle and glass storage
- Forward dining table
- Bar unit with refrigerator, bottle and glass storage
- Entertainment center
- Electric opening window portside
- Blinds, curtains or sunscreens on all windows and doors
- Overhead downlighters and concealed lighting
- Electrically operated opening roof
- Stainless-steel framed

GALLEY

- Galley Granite/Marble: Betel White
- Garbage disposal
- Granite/marble worktop
- Four-zone ceramic hob
- Extractor fan
- Sharp combination microwave/conventional oven with grill
- Icemaker
- Miele dishwasher
- Stainless-steel sinks with Monobloc mixer taps
- Full height fridge/freezer

- Storage cupboards, drawers and lockers
- Waste bin
- Opening portholes
- Bosch Axis combination washer/dryer and storage in lobby area

ACCOMODATIONS

- All cabins feature opening and/or fixed portholes 120v power points and air-conditioning
- All bathrooms feature opening portholes, electric quietflush toilets with holding tanks and shaver points

MASTER STATEROOM

- Large Double Bed
- Dressing table
- Walk-in wardrobe
- Sofa
- Fitted Quilted Blanket
- Samsung LED TV/DVD
- Marantz audio system
- Drawers, cupboards and storage lockers
- Full Length Mirror
- Overhead and Individual Berth Lights

EN-SUITE BATHROOM:

- Washbasin with Monobloc mixer tap
- Separate shower cubicle with automatic shower pump-out
- Extractor fan
- Mirror
- Storage lockers

FORWARD GUEST CABIN

- Large double bed
- Dressing table
- Walk-in wardrobe
- Sofa
- Samsung 22' LED TV
- Fusion radio/iPod/MP3 system
- Drawers, cupboards and storage lockers
- Overhead and individual berth lights
- Deck hatch and fixed skylights with integrated fly screen and blind

EN-SUITE BATHROOM:

- Washbasin with Monobloc mixer tab

- Separate shower cubicle with automatic shower pump-out
- Extractor fan
- Mirror
- Storage lockers

STARBOARD GUEST CABIN

- Two full size single berths with sliding berth conversion to double
- Samsung LED TV
- Fusion stereo
- Wardrobe with shelves
- Storage lockers
- Downlighters and individual berth lights

EN-SUITE BATHROOM

- Washbasin with Monobloc mixer tap
- Separate shower cubicle with automatic shower pump out
- Extractor fan
- Mirror
- Storage locker
- Additional access to door from passageway

CREW CABIN

- Full size twin berths
- Storage lockers and hanging locker
- En-Suite Bathroom
- Washbasin
- Shower with automatic pump-out and extractor fan
- Mirror
- Storage locker

NAVIGATIONAL EQUIPMENT

- Furuno Navnet TZ Touch 14" displays (2 screens)
- Furuno GP3308 GPS & Furuno DRS4A 3.5t,4kw (48nm)
- Open array color radar
- Furuno Navpilot 711
- Furuno FI-503 tri-data display

DECK

- Reversible electric anchor winch with foredeck and helm position controls
- Self-stowing (40kg/88lb) Delta anchor with 90m of chain
- Bow rope storage locker

- Freshwater deck/anchor wash
- Walk-through coachroof seating
- Coachroof sunbed area
- Deck storage lockers for fenders and foredeck sunbed area
- Stemhead roller with automatic anchor launch and retrieve
- Stainless steel bow, stern and spring cleats (8)
- Stainless steel pulpit and guardrails
- Forecabin hatch
- PVC rubbing with stainless steel insert
- Full set of IMCO navigation lights
- Riding light
- Searchlight with remote control
- Twin electric horns
- Fuel and water fillers
- Electro hydraulic telescopic passerelle (3.8m) with remote control
- Teak foredeck table on removable legs
- Electric sun awning
- Teak side decks

COCKPIT

- Teak decking
- U-shaped seating/dining area to starboard with folding teak table
- Highgloss teak table
- Cockpit lighting
- Tonneau cover
- Stainless steel handrails
- Cockpit wetbar including sink, refrigerated coolbox, barbecue, storage and waste bin
- Electro hydraulically opening garage with storage for tender
- Electric winch dinghy retrieval system
- Life raft storage
- Access hatch to lazarette stowage space
- Transom door to crew cabin
- Loudspeakers linked to saloon surround sound system with local control
- Twin cockpit gates leading to aft deck and to bathing platform with raise/lower facility, hot and cold transom shower, foldaway swimming ladder and teak decking

HELM

- Twin helm seats with electric adjustment
- AC/DC control systems panel
- Door to side deck
- Clear toughened glass windscreen for unimpaired night vision
- Electric opening window portside
- Instrument panel

- Full engine instrumentation
- Fuel gauges
- Electronic engine and gear shift controls
- Power assisted electro-hydraulic steering with adjustable steering wheel
- Rudder position indicator
- Electro-hydraulic trim tab controls with indicators
- Furuno autopilot
- Simrad VHF with DSC R/T
- Speed and distance log
- Echo sounder with alarm
- Remote control searchlight
- High-speed compass
- Horn button
- Chart area with storage
- Twin windscreen wipers
- Windscreen freshwater pressure wash
- Bilge pump controls with visual pump running indicators
- Fuel contamination alarm system
- Air conditioning outlets
- 12v outlet
- Red night lighting
- Variable speed bow thruster and stern thruster

POWER AND DRIVE SYSTEMS

- 5 bladed propellers in nickel aluminium bronze
- Bow thruster Stern thruster
- Engine room lighting
- Power assisted electro-hydraulic steering
- Electro-hydraulic trim tab controls with indicators
- Electronic engine controls
- Freshwater outlet point in engine room
- Engine room extractor fans with electronic time delay
- Dripless shaft seals

ELECTRICAL

- 4 x heavy duty batteries for engine starting
- 6 x heavy duty auxiliary batteries
- Engine alternators charge both banks of batteries via automatic switch charging system
- 2 x 60 amp battery chargers charge both banks of batteries via an automatic switch charging system
- Battery paralleling system with remote control switch at main panel
- Circuit breakers on all circuits
- 120 volt

- 27.5 diesel generator with own starting battery and specially silenced exhaust
- Shore support inlet in cockpit
- Generator/shore support changeover switch
- Polarity check system
- Earth leakage safety trip
- Glendinning Cablemasters (2)

FUEL SYSTEM

- Twin fuel tanks with interconnection system giving 1160 gallons
- Fuel filters on both side decks
- High-capacity duplex fuel filters/water traps with changeover cocks and visual contamination warning at console
- Remote fuel cocks in cockpit locker
- Fuel gauges on helm console

WATER SYSTEM

- Water tank totaling 180 gallons plus 26 gallons hot water calorifier
- Water heated by 240v immersion heater
- Automatic water pump with filter
- Main circuit breaker at switch panel
- Water level gauge
- Deck filler
- Electric quietflush WC system with 72 gallons holding tank, contents gauge and electric overboard discharge with macerator back-up system as well as dockside discharge system

FIRE EXTINGUISHERS

- Automatic/manual override fire extinguishers in engine room with warning system at helm position
- Hand operated fire extinguishers (5) in owner's stateroom, forward and starboard guest cabins, galley, helm position and crew cabin

BILGE PUMPS

- Automatic electric bilge pumps
- High capacity manual bilge pump with valve system and suction points in same areas

VESSEL HIGHLIGHTS

- Seakeeper M26000 Stabilizer
- 12' tender with Yamaha 40hp outboard
- KVH M7 HD SAT TV system
- 3 receivers HD

- Marantz audio receiver
- iPad integrated remote
- High gloss teak table, cup holders
- Upgraded 27.5 kw generator
- Variable speed bow/stern thruster hydraulic
- CAT engine warranty
- Bottom paint September 2014
- Prop speed (props, rudders, struts, trim tabs) Sept 2014
- New zincs Sept 2014
- Vessel detailed Sept 2014
- Furuno Navnet TZ touch screen (2) 14"
- Teak deck package

INTERIOR FINISH/EXTERIOR UPHOLSTERY/CANVAS/COVERS

- Furniture finished in walnut gloss finish.
- Cockpit cushions and aft sunpad cushions in Movida blue
- Cockpit table cover
- Cockpit seating cover includes zip-off aft sunpad cover
- Foredeck sunpad cushions in Movida Metallic
- Foredeck sunpad cushion cover
- Foredeck seating cover

COLOR SCHEME

- Upgraded decor with throw & quilted blanket
- Quartz leather upholstery in dinette
- HULL COLOR White Hull
- INTERIOR/ FURNITURE Wood Interior: Walnut Gloss

Исключения

При продаже яхты исключаются личные вещи владельца.

Отказ от ответственности

Компания предоставляет описание судна или яхты добросовестно, но не может гарантировать точность этой информации, а также не ручается за техническое состояние. Покупатель должен проинструктировать своих агентов или оценщиков исследовать представленную информацию более подробно, по собственному желанию. Продажа судна или яхты, изменение цены или снятие с продажи будет происходить без предварительного уведомления.

ФОТОГРАФИИ

Salon



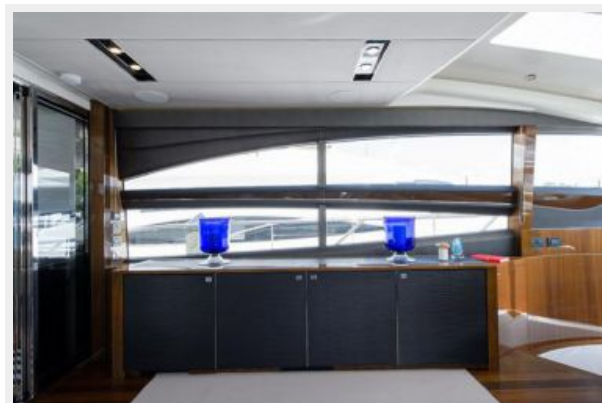
Salon



Salon



Salon



Salon



Salon



Salon



Galley



Galley



Dinette



Master Stateroom



Master Stateroom



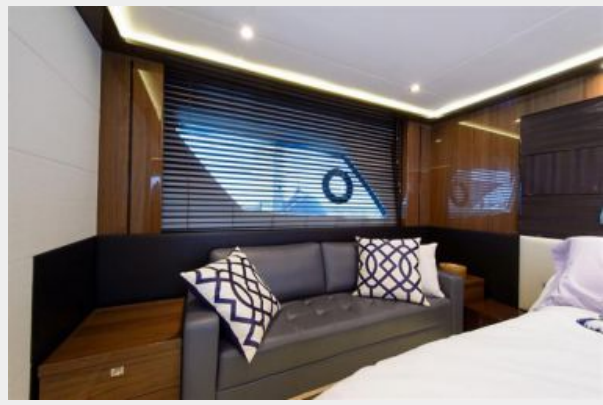
Master Stateroom



Master Stateroom



Master Stateroom



Master Head



Foward Stateroom



Foward Stateroom



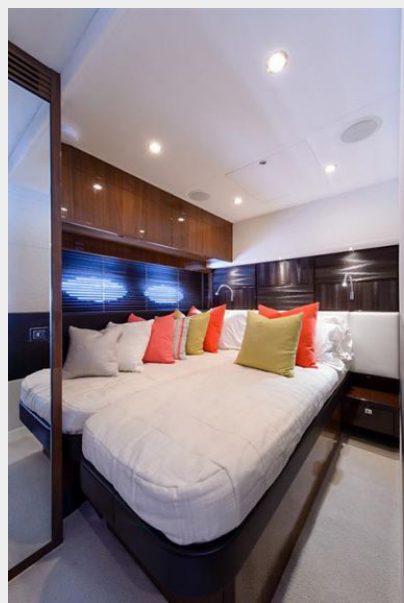
Foward Stateroom



Forward Stateroom Head



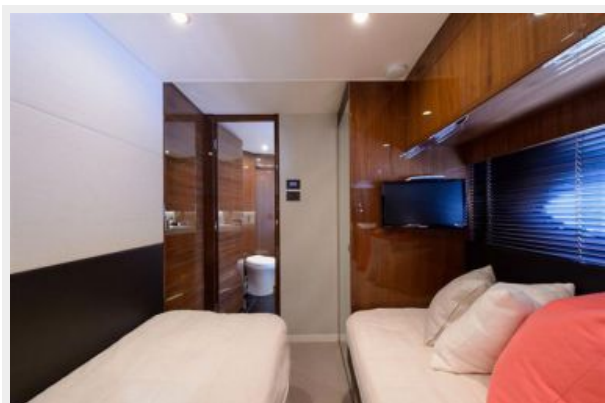
Guest Stateroom



Guest Stateroom



Guest Stateroom



Guest Stateroom Head



Bow



Bow



Bow



Bow



Bow



Cockpit



Cockpit



Cockpit



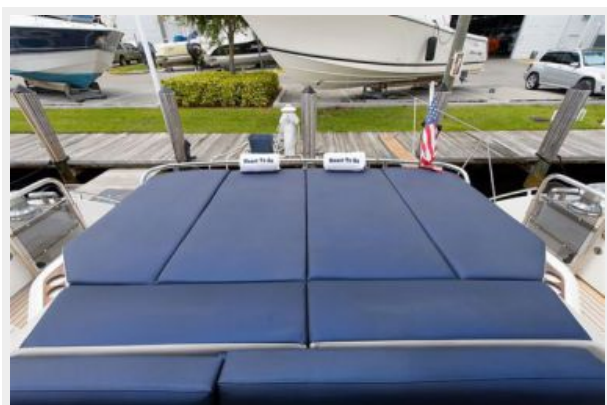
Cockpit



Cockpit



Cockpit



Stern



Stern



Stern



Stern



Crew Stateroom



Crew Stateroom



Crew Stateroom



Crew Head



Engine Room



Engine Room



Engine Room



Engine Room



Engine Room



Engine Room



КОНТАКТЫ

Андрей Шестаков (Andrey Shestakov) – ведущий яхтенный брокер отдела продаж яхт и судов компании Shestakov Yacht Sales Inc. Официальный представитель Shestakov Yacht Sales Inc. для русскоговорящих клиентов в центральном офисе компании в Майами/Форт Лодердейл/Флорида/США.

Контактная информация

Email: andrey@shestakovyachtsales.com

Web: shestakovyachtsales.com

Телефоны

Краснодарский край: **+7(918)465-66-44**

США, Майами, Флорида: **+1(954)274-4435**

Время работы

Понедельник – Суббота: **9:00 - 21:00**
EDT

Воскресенье: **Закрито**

Адрес



Harbour Towne Marina, 850 NE 3rd St,
STE 213, Dania, FL 33004