

## A SALT WEAPON — CONTENDER



**Builder:** CONTENDER

**Year Built:** 2005

**Model:** Center Console

**Price:** PRICE ON APPLICATION

**Location:** United States

**LOA:** 36' 3" (11.05m)

**Beam:** 10' 0" (3.05m)

**Max Speed:** 47.79369331 Kts. (55 MPH)

Our experienced yacht broker, Andrey Shestakov, will help you choose and buy a yacht that best suits your needs **A Salt Weapon — CONTENDER** from our catalogue. Presently, at Shestakov Yacht Sales Inc., we have a wide variety of yachts available on our sale's list. We also work in close contact with all the big yacht manufacturers from all over the world.

If you would like to buy a yacht **A Salt Weapon — CONTENDER** or would like help answering any questions concerning purchasing, selling or chartering a yacht, please call **+1(954)274-4435**

# TABLE OF CONTENTS

|                              |    |
|------------------------------|----|
| TABLE OF CONTENTS            | 2  |
| SPECIFICATIONS               | 5  |
| Overview                     | 5  |
| Basic Information            | 5  |
| Dimensions                   | 6  |
| Speed, Capacities and Weight | 6  |
| Accommodations               | 6  |
| Hull and Deck Information    | 6  |
| Engine Information           | 6  |
| DETAILED INFORMATION         | 7  |
| Electronics                  | 7  |
| Engines                      | 7  |
| Hull and Deck                | 7  |
| Exclusions                   | 7  |
| Disclaimer                   | 8  |
| PHOTOS                       | 9  |
| Profile                      | 9  |
| Profile                      | 9  |
| Profile                      | 9  |
| Stbd Side                    | 9  |
| Port Profile                 | 9  |
| Profile                      | 9  |
| Profile                      | 10 |
| Bow                          | 10 |
| Running                      | 10 |
| Running                      | 10 |
| Running                      | 10 |
| Running                      | 10 |

|                                   |    |
|-----------------------------------|----|
| Cuddy Cabin                       | 11 |
| Cuddy Cabin Stbd                  | 11 |
| Cuddy Cabin Port                  | 11 |
| Forward Deck with Molded In Seats | 11 |
| Port Deck                         | 11 |
| Rod Holders on Console            | 11 |
| Fuel Fill                         | 12 |
| Starboard Deck                    | 12 |
| Deck Hatches                      | 12 |
| Fish Box                          | 12 |
| T Top Radar                       | 12 |
| Console Looking Aft               | 12 |
| Helm Dash                         | 13 |
| Furuno Electronics                | 13 |
| Cruise Speed                      | 13 |
| Cruise Speed 2                    | 13 |
| VHF                               | 13 |
| Fuel                              | 13 |
| Tachs                             | 14 |
| Tachs                             | 14 |
| Console Batteries                 | 14 |
| Battery Switches                  | 14 |
| Battery Chargers                  | 15 |
| Wiring                            | 15 |
| Bow                               | 15 |
| Bow Looking Forward               | 15 |
| Windlass Anchoring System         | 15 |
| Windlass Anchoring System         | 15 |
| Cockpit                           | 16 |

---

|                      |           |
|----------------------|-----------|
| Cockpit 2            | 16        |
| Triple Verados       | 16        |
| Triple 275 Verados   | 16        |
| Mounting Bracket     | 16        |
| Engine Mounting 2    | 16        |
| Engine Bracket       | 17        |
| Dive Door to Transom | 17        |
| 275 Mercury Verados  | 17        |
| Aft                  | 17        |
| Trim Tabs            | 17        |
| Trailer              | 17        |
| Trailer 2            | 18        |
| Trailer 3            | 18        |
| <b>CONTACTS</b>      | <b>19</b> |
| Contact details      | 19        |
| Telephones           | 19        |
| Office hours         | 19        |
| Address              | 19        |

---

# SPECIFICATIONS

---

## Overview

---

**Triple Mercury 275 Verados!**

**All Mercury updates complete**

**Furuno GPS/Radar**

**Brand New cockpit upholstery September 2013**

**Triple axle Continental trailer included**

### **ENGINES QUALIFY FOR PASSPORT EXTENDED PROTECTION**

An expansion of the proven 36 Open CC, the 36 Cuddy offers a unique mix for any style boating. If you are considering an offshore fishing machine, look no further than this beautiful Contender 36 Cuddy. Whether you are more of a family cruiser or middle grounds runner, this Contender has you covered. Upgraded Rupp top gun outriggers, 470 gallons of fuel, over 20 rod holders and 3 livewells complete a fishing machine ready for a day offshore. The cabin offers over 9 feet of decking, free of cleats for a great casting platform. Inside the cabin housing you have ample cushions to fill in a large sleeping quarters, or large storage lockers port and starboard. Walking around the center console to forward you have an entry way into the storage area and access to wiring, batter switches, chargers and electronics. Also, with the 6'6 standing head room you will not feel cramped, even with some space used as storage.

As you run this boat, you can't help but feel the stability in the ride. This is contributed to a low center of gravity with the full weight of the fiberglass hull, and balsa-cored hullsides and deck. Plenty of power with the triple 275 Mercury Verados gets you up on a plane, with about a 55+ mph top speed. There are a number of Contenders out there on the market, but none of them cared for like A Salt Weapon. Her owner has been meticulous with maintenance records, cosmetic upgrades and detail. **YOU WILL NOT BE DISAPPOINTED!**

---

## Basic Information

---

**Category:** Center Console

**Model Year:** 2005

**Year Built:** 2005

**Country:** United States

---

## Dimensions

---

**LOA:** 36' 3" (11.05m)

**Beam:** 10' 0" (3.05m)

---

## Speed, Capacities and Weight

---

**Max Speed:** 47.79369331 Kts. (55 MPH)

**Displacement:** 7050 Pounds

**Water Capacity:** 45 Gallons

**Fuel Capacity:** 470 Gallons

---

## Accommodations

---

**Total Cabins:** 1

**Total Berths:** 1

---

## Hull and Deck Information

---

**Hull Material:** Fiberglass

---

## Engine Information

---

**Engines:** 3

**Manufacturer:** Mercury

**Model:** Verado 275 4 Stroke

**Engine Type:** Outboard

**Fuel Type:** Gas

---

## DETAILED INFORMATION

---

### Electronics

---

- Furuno NavNet Chart plotter/GPS/Radar, Fish Finder
- iCom iC-M502 VHF
- Stereo, SAT capable and MP3 Capable
- Cockpit speakers
- Compass
- 3-sided enclosure

### Engines

---

- (3) Mercury Verados 275 hp 4-Stroke w/ 815 hours
- All service records available
- Shore power cord with battery charger

### Hull and Deck

---

- Windlass anchoring system
- Pop up cleats
- 24 Rod holders
- In deck lockable storage for rods/equipment
- Navigation lights
- 3 Livewells- 1100 GPH pumping water circulation
- Self-bailing cockpit drains
- T-Top with SS welded support
- Spreader lights for cockpit
- Accent lighting
- Trim Tabs - Kiekhaefer
- Battery Charger and selector switches
- (3) Bilge pumps
- Leaning post
- Stainless steel retractable ladder
- Inverter
- Under gunnel lighting

### Exclusions

---

Owner's personal belongings.

---

## Disclaimer

---

The Company offers the details of this vessel or yacht in good faith but cannot guarantee or warrant the accuracy of this information nor warrant the condition of the vessel. A buyer should instruct his representatives, agents, or his surveyors, to investigate such details as the buyer desires validated. This vessel or yacht is offered subject to prior sale, price change, or withdrawal without notice.



# PHOTOS

**Profile**



**Profile**



**Profile**



**Stbd Side**



**Port Profile**



**Profile**



**Profile**



**Bow**



**Running**



**Running**



**Running**



**Running**



**Cuddy Cabin**



**Cuddy Cabin Stbd**



**Cuddy Cabin Port**



**Forward Deck with Molded In Seats**



**Port Deck**



**Rod Holders on Console**



**Fuel Fill**



**Starboard Deck**



**Deck Hatches**



**Fish Box**



**T Top Radar**



**Console Looking Aft**



**Helm Dash**



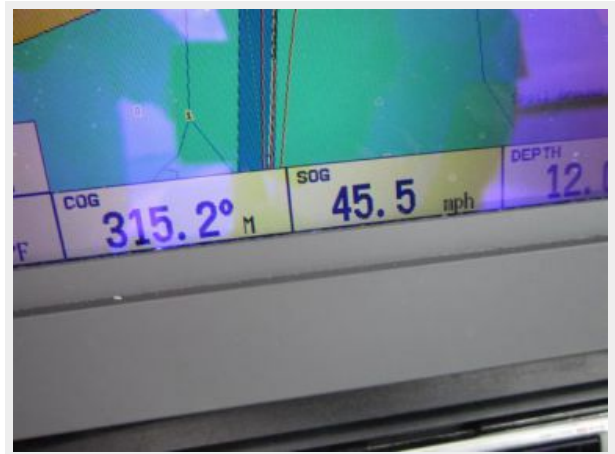
**Furuno Electronics**



**Cruise Speed**



**Cruise Speed 2**



**VHF**



**Fuel**





### Battery Chargers



### Wiring



### Bow



### Bow Looking Forward



### Windlass Anchoring System



### Windlass Anchoring System



**Cockpit**



**Cockpit 2**



**Triple Verados**



**Triple 275 Verados**



**Mounting Bracket**



**Engine Mounting 2**





**Engine Bracket**



**Dive Door to Transom**



**275 Mercury Verados**



**Aft**



**Trim Tabs**



**Trailer**



**Trailer 2**



**Trailer 3**



---

# CONTACTS

---

Andrey Shestakov, leading yacht broker of the sales department of Shestakov Yacht Sales Inc. Shestakov Yacht Sales Inc., the official representative of the Miami/Fort Lauderdale FL headquarters.

---

## Contact details

---

Email: [andrey@shestakovyachtsales.com](mailto:andrey@shestakovyachtsales.com)

Web: [shestakovyachtsales.com/en/](http://shestakovyachtsales.com/en/)

---

## Telephones

---

USA: +1(954)274-4435

---

## Office hours

---

Monday – Saturday: **9:00 - 21:00** EDT

Sunday: **closed**

---

## Address

---



Harbour Towne Marina, 850 NE 3rd St,  
STE 213, Dania, FL 33004