

CARPE DIEM — VIKING



Builder: VIKING

Year Built: 1999

Model: Sport Fisherman

Price: PRICE ON APPLICATION

Location: United States

LOA: 50' 0" (15.24m)

Beam: 16' 4" (4.98m)

Max Draft: 4' 9" (1.45m)

Cruise Speed: 28 Kts. (32 MPH)

Max Speed: 33 Kts. (38 MPH)

Our experienced yacht broker, Andrey Shestakov, will help you choose and buy a yacht that best suits your needs **Carpe Diem — VIKING** from our catalogue. Presently, at Shestakov Yacht Sales Inc., we have a wide variety of yachts available on our sale's list. We also work in close contact with all the big yacht manufacturers from all over the world.

If you would like to buy a yacht **Carpe Diem — VIKING** or would like help answering any questions concerning purchasing, selling or chartering a yacht, please call **+1(954)274-4435**

TABLE OF CONTENTS

TABLE OF CONTENTS	2
SPECIFICATIONS	5
Overview	5
Basic Information	5
Dimensions	5
Speed, Capacities and Weight	6
Accommodations	6
Hull and Deck Information	6
Engine Information	6
DETAILED INFORMATION	7
Accommodations	7
Work completed since Spring 2012	7
Work completed since January 2014	7
Electronics	7
Salon	8
Galley	8
Master Stateroom	8
VIP Stateroom	8
Guest Stateroom	8
Features & Equipment	8
Broker Comments	8
Exclusions	9
Disclaimer	9
PHOTOS	10
Bow View	10
Profile	10
Salon	10
Salon	10

Salon	11
Dinette	11
Galley	11
Galley	11
Head	12
Master Stateroom	12
Master Stateroom	12
Master Stateroom	12
Head	13
VIP Stateroom	13
Guest Stateroom	13
Washer/Dryer	13
Cockpit	14
Cockpit	14
Cockpit	14
Cockpit	14
Cockpit	14
Cockpit View	14
Cockpit	15
Flybridge	15
Flybridge Seating	15
Flybridge	15
Flybridge Seating	16
Flybridge	16
Engine Room	16
Engine Room	16
Engine Room	16
Engine Room	16
Engine Room	17

Engine Room	17
Stbd Profile	17
Port Profile	17
Aft View	18
Port View	18
Aft View	18
Stbd Profile	18
CONTACTS	19
Contact details	19
Telephones	19
Office hours	19
Address	19

SPECIFICATIONS

Overview

"Carpe Diem" is a spectacular example of the popular 3 stateroom, 2 head 50' Viking. The present owner of 3 1/2 years has spent over \$200,000 to make her a 9 1/2. Some updates are:

- Painted from waterline up
- MAN 1000 service June 2014
- Electronics upgrade
- New Teak cockpit
- Both A/C units replaced
- Replaced all mattresses
- Custom U-shaped couch
- LED lights throughout
- New Carpet & runners
- Alligator hide Lambrequins
- 42" Salon TV

Easy To Show! Call for an appointment!

Basic Information

Category: Sport Fisherman

Sub Category: Convertible

Model Year: 2000

Year Built: 1999

Country: United States

Dimensions

LOA: 50' 0" (15.24m)

Beam: 16' 4" (4.98m)

Max Draft: 4' 9" (1.45m)

Speed, Capacities and Weight

Cruise Speed: 28 Kts. (32 MPH)

Max Speed: 33 Kts. (38 MPH)

Displacement: 58000 Pounds

Water Capacity: 208 Gallons

Fuel Capacity: 805 Gallons

Accommodations

Total Cabins: 3

Hull and Deck Information

Hull Material: Fiberglass

Engine Information

Engines: 2

Manufacturer: MAN

Model: D2840LE

Engine Type: Inboard

Fuel Type: Diesel

DETAILED INFORMATION

Accommodations

Luxurious accommodations, massive bridge, enormous cockpit of 144 sq ft and superior fishability make this 50' Convertible one of Viking's most popular yachts in her class, producing over 120 in it's production run.

The Convertible has 3 staterooms and 2 heads, a spacious salon with a custom L-shaped sofa and coffee table. The dinette is forward and next to galley. The galley includes an Under counter refrigerator/freezer. All staterooms are down and forward with the master being midship. The VIP forward has a queen bed on starboard side with double bunk above and the other guest stateroom is opposite the master with upper/lower bunks.

Work completed since Spring 2012

•Awlcraft Ice Blue painted hull with Navy blue boot stripe •New both A/C units •New Garmin 5212 •New ICOM VHF and antenna •New Flybridge Stereo and Speakers •Reconditioned propellers •New custom salon U-shaped couch with stowage •New carpeting •New carpet runners •New alligator hide lambrequins •New glass and marble tile galley backsplash •New Master Cabin Bedspread •New 42" Panasonic LCD TV •Re-stained salon wood joinery •New LED lights throughout entire interior •New multi-Color LED lights in cockpit and bridge overhang •New Bilge Pumps •New Saltwater Wash-down Pump •New Cockpit Removable Carpet

Work completed since January 2014

•MAN 1000 hour service - June 2014 •New Teak decking in cockpit •New LED spreader lights •Windlass rebuilt and re-chromed plated - added remote feature •All new custom bridge cushions •All new custom bridge 3 side EZ2CY enclosure •New mattresses in all staterooms •New aft sunshade for bridge and cockpit •New helm chair cushions •New rod holders •New full topside paint •New A/C units •New macerator pump in fish box •New custom live bait well/freezer in tackle center •New Glendinning cablemaster •New teak treads on bridge ladder •Most exterior hardware replaced with paint job •New vacuum pumps on both heads •New instant hot faucet in galley •New custom fitted sheets and blankets for all berths •New digital broadcast TV antenna •New rudder bearings •Bottom paint •Propspeed on running gear

Electronics

•Custom recessed electronics box with cover •New Garmin 5212 GPS •Robertson AP20 Autopilot •Furuno FCV-1100L Color Sounder •Furuno Radar - Not installed •Autohelm Tri-Data •Furuno GP-1650F Color GPS •New ICOM VHF Radio •New Clarion Stereo/CD Bridge Stereo

Salon

•Teak wood joinery •New large U-Shaped custom couch with stowage •Dinette with glossy teak table •New carpeting •New carpet runners •New alligator hide lambrequins •New LED overhead lights •Large 42" Panasonic LCD TV •Ample stowage areas •Sony DVD player •JVC multi-disc CD player •Denon amplifier •Main electrical panel

Galley

•Sub-Zero under counter refrigerator/freezer •Convection/Microwave oven •Two burner cook top •Disposal •New tile and glass back splash •Ample cabinet stowage •New LED overhead lights •Solid surface counter tops •Amtico teak and holly decking

Master Stateroom

•Mid-ship master cabin •Ensuite head •Queen berth with stowage below - New mattress •Ample stowage lockers •Reading lamps •New bedspread •New Carpeting •New LED overhead lighting •JVC TV

VIP Stateroom

•Located forward •Larger lower bunk with twin upper bunk - New mattresses •Ensuite head access •Ample stowage lockers •New LED overhead lighting •New carpeting

Guest Stateroom

•Located to port •Over/under bunks - New mattresses •Stowage lockers •New LED overhead lighting •New carpeting

Features & Equipment

•Awlcraft Ice Blue hull paint spring 2012 •2 to 1 transmission reduction gears •Water maker •Glendinning cablemaster,- New April 2013 •3 side bridge enclosure - New June 2014 •Kenmore washer/dryer •Triple spreader out riggers •Bluewater fighting chair - Refinished June 2014 •Blue water teak ladder back helm chairs •Cockpit freezer •Large in deck fish boxes •Cockpit tackle center with new cushions •Onan Genset with 1550 hours •Super clean engine room •Man 1000 hour service done June 2014

Broker Comments

The owner has treated Carpe Diem as his hobby. Having owned her for the past 3 1/2 years, being a pilot and being very detail oriented, he could not resist spending over \$200,000 to update his passion to almost new condition!

Exclusions

Owner's personal belongings.

Disclaimer

The Company offers the details of this vessel or yacht in good faith but cannot guarantee or warrant the accuracy of this information nor warrant the condition of the vessel. A buyer should instruct his representatives, agents, or his surveyors, to investigate such details as the buyer desires validated. This vessel or yacht is offered subject to prior sale, price change, or withdrawal without notice.

PHOTOS

Profile



Bow View



Salon



Salon



Salon



Dinette



Galley



Galley



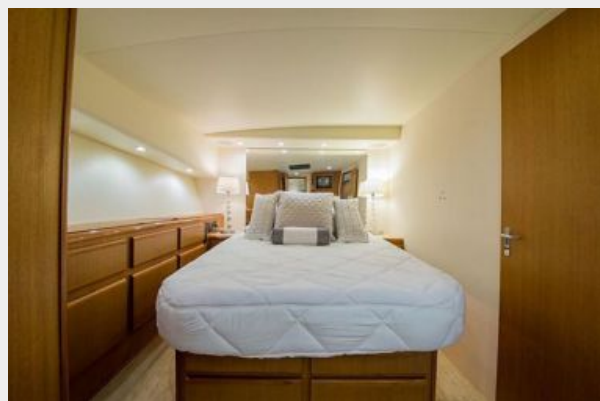
Head



Master Stateroom



Master Stateroom



Master Stateroom



Head



VIP Stateroom



Guest Stateroom



Washer/Dryer



Cockpit



Cockpit



Cockpit



Cockpit



Cockpit



Cockpit View



Cockpit



Flybridge



Flybridge Seating



Flybridge



Flybridge Seating



Flybridge



Engine Room



Engine Room



Engine Room



Engine Room



Engine Room



Engine Room



Stbd Profile



Port Profile



Aft View



Port View



Aft View



Stbd Profile



CONTACTS

Andrey Shestakov, leading yacht broker of the sales department of Shestakov Yacht Sales Inc. Shestakov Yacht Sales Inc., the official representative of the Miami/Fort Lauderdale FL headquarters.

Contact details

Email: andrey@shestakovyachtsales.com

Web: shestakovyachtsales.com/en/

Telephones

USA: +1(954)274-4435

Office hours

Monday – Saturday: **9:00 - 21:00** EDT

Sunday: **closed**

Address



Harbour Towne Marina, 850 NE 3rd St,
STE 213, Dania, FL 33004