

## YES, YOU'RE RIGHT! — SEA RAY



**Судостроитель:** SEA RAY

**Год постройки:** 2012

**Модель:** Моторная яхта

**Цена:** **ЦЕНА ЯХТЫ ПО ЗАПРОСУ**

**Местонахождение:** United States

**Длина общая:** 45' 0" (13.72m)

**Ширина:** 13' 2" (4.01m)

**Мин. осадка:** 46' 0" (14.02m)

Купить **Yes, you're right! — SEA RAY** а также выбрать подходящую вам яхту из нашего каталога яхт вам поможет опытный яхтенный брокер Андрей Шестаков. На сегодняшний день компания **Shestakov Yacht Sales Inc.** имеет большое количество яхт в собственном списке продаж, а также тесно сотрудничает со всеми крупными яхтенными производителями по всему миру.

Для того чтобы купить яхту **Yes, you're right! — SEA RAY** а также проконсультироваться по любому вопросу связанному с покупкой, продажей, чартером яхт позвоните по телефону **+7(918)465-66-44**.

# ОГЛАВЛЕНИЕ

---

ОГЛАВЛЕНИЕ	2
ХАРАКТЕРИСТИКИ	5
Основная информация	5
Размеры	5
Скорость, вместимость и масса	5
Размещение	5
Корпус и палуба	5
Информация о двигателе	6
ПОДРОБНОЕ ОПИСАНИЕ	7
Vessel Walkthrough	7
Hull & Deck Features	7
Cockpit	8
Salon	9
Galley	10
Forward Stateroom	10
Forward Shower	10
Forward / Day Head	10
Mid Stateroom / Media Room	11
Helm / Electronics	11
Mechanical / Engine	12
Electrical Systems	13
Underwater Gear	13
Исключения	13
Отказ от ответственности	14
ФОТОГРАФИИ	15
Bow Profile	15
Port Profile	15
Transom Profile	15

Port Aft Profile	15
Our Trade Transom	15
Aft Deck Forward	15
Our Trade Collage	16
Aft Sunpad (1)	16
Aft Sunpad (2)	16
Cockpit Forward	16
Cockpit TV / Sink / Grill	16
Helm Station Overview	16
Helm Double Companion Chair	17
Helm (1)	17
Helm (2)	17
Helm Electronics (1)	17
Stairway to Lower Companion / Salon Forward	17
Helm Electronics (2)	17
Salon / Dinette	18
Mid Stateroom / Media Room Forward	18
Mid Stateroom / Media Room Sofa	18
Mid Stateroom / Media Room Aft	18
Mid Stateroom / Media Room TV To Starboard	18
Mid Stateroom / Media Room To Starboard Aft	18
Mid Stateroom / Media Room To Starboard	19
Galley Aft	19
Master / Forward Stateroom	19
Master / Forward Stateroom To Port	19
Day Head (1)	19
Master / Forward Stateroom Starboard	19
Day Head (2)	20
Day Head Shower	20

---

Galley Starboard	20
Salon Forward	20
Salon Sofa To Port	20
Windlass	20
Engine Room	21
Raymarine Radar	21
Engine Room	21
Engine Room	21
Engine Room	21
Engine Room	21
КОНТАКТЫ	22
Контактная информация	22
Телефоны	22
Время работы	22
Адрес	22

# ХАРАКТЕРИСТИКИ

## Основная информация

Тип судна: Моторная яхта

Модельный год: 2012

Год постройки: 2012

Страна: United States

Открытая палуба мостика: Да

## Размеры

Длина общая: 45' 0" (13.72m)

Ширина: 13' 2" (4.01m)

Мин. осадка: 46' 0" (14.02m)

Длина привального бруса: 45' 5"  
(13.84m)

## Скорость, вместимость и масса

Водоизмещение: 27205 Pounds

Чистый вес: 12 Pounds

Вместимость воды: 70 Gallons

Вместимость сточного бака: 42 Gallons

Объем топливного бака: 292 Gallons

## Размещение

Всего кают: 2

Всего ком. состава: 1

## Корпус и палуба

Материал корпуса: FRP

Комплектация корпуса: Modified V-Hull

Цвет корпуса: Black

Дизайнер корпуса: Sea Ray

Дизайнер экстерьера: Sea Ray

Дизайнер интерьера: Sea Ray

## Информация о двигателе

---

**Двигатели:** 2

**Производитель:** Cummins

**Модель:** Zeus/48/HO/CMD/QSB

**Тип двигателя:** Inboard

**Тип топлива:** Diesel

---

# ПОДРОБНОЕ ОПИСАНИЕ

---

## Vessel Walkthrough

---

**Yes, you're right!** is a well maintained 2012 45' Sea Ray Sundancer with T- Cummins Zeus 480 HO (T-459PHP) engines. The transom has ample storage and the swim platform has a concealed stainless-steel four step swim ladder with integral grab handle. Before entering the cockpit area, there is a large aft sunpad with dual backrest. The cockpit has a dinette u-shaped area with refrigerator/icemaker and sink as well as a built-in grill and TV for outdoor entertaining. Moving forward in the cockpit there are twin double-wide helm chairs with flip-up thigh rise bolster, armrests on a heavy-duty pedestal. The helm is equipped with Raymarine electronics.

**Yes, you're right!** lower area is spacious with light cherry high gloss cabinetry. To the port side of the salon is the an L-shaped sofa and high gloss dinette table. To starboard is the galley, complete with ample storage with stainless-steel refrigerator/freezer, sink , microwave, coffeemaker and two burner stove. Just aft of the galley is the media/mid stateroom that is equipped with an ultra-leather sofa, and a slide-out base and ottomans. The sofa converts to a queen size berth. This mid stateroom is complete with a large TV, entertainment system, blue LED lighting, and a hanging locker.

**Yes, you're right!** master stateroom is in the bow with two hanging closets, along with cabinet and drawer storage. The forward head is starboard and shared between the master stateroom and salon. The forward shower is located to port with a privacy door, tile flooring and storage.

**Yes, you're right!** Has **Extremely Low Hours - 165 hr.** - Is **Very Clean** - And Is Located in **Clearwater FL.**

**Click here to view Yes, you're right! slideshow:**

<http://caryjohn.zenfolio.com/searaysundancer450/slideshow>

---

## Hull & Deck Features

---

- Sun Pad Forward Deck w/Backrest **UPGRADE**
- Spotlight w/Dual Halogen Bulbs **UPGRADE**
- Yacht Flag & Flag Pole **UPGRADE**
- Bow Rail, 316 Stainless Steel w/Welded Stanchions, Intermediate Rails & Life Lines
- Cleats, Custom Sea Ray Thru- Bolted - Stainless Steel (8)
- Deck Fill Plates, Stainless Steel
- Deck Rails, 316 Stainless Steel
- Drain Plug, Brass-Threaded - Garboard
- Black Hull Gel Coat
- Gel Coat Deck Accent - Agate
- Graphics, Striping

- Graphics, Transom Numerator
- Handrails, 316 Stainless Steel
- Hatch, Deck Vent – Translucent w/Locks & Sky Screen Covers (Trapezoid)
- Hull Windows, Stainless Steel - (2 Fixed; 1 Salon, 1 Galley)
- Lights, Navigation
- Portlights, (8) Stainless Steel - (2 Opening, 6 Fixed)
- Resin, High-Performance Vinylester
- Rub Rail, PVC w/Stainless-Steel Insert
- Storage, Transom (For Fenders & Gear) w/Gas Assist
- Stringer System, Foam & Fiberglass
- Swim Platform w/Concealed Stainless-Steel Four-Step Swim Ladder w/Integral Grab Handle
- Thru-Hull Fittings, Stainless Steel
- Toe Rail, Molded Fiberglass – Deck
- Vent System, Engine Room, Stainless Steel
- Windshield, Tempered/Tinted Curved Glass Bonded In w/Electric Front Vent
- Windshield Washer System
- Windshield Wipers w/Delay & Speed Control
- Canvas (Sunbrella)
- Canvas - Black
- Aft Curtain w/Bungee Cords
- Windlass System:
- Anchor, Galvanized
- Anchor Chute, Stainless Steel
- Anchor Rope/Chain Storage w/Gas Assisted Hatch
- Anchor Washdown Spigot
- Windlass, Rope/Chain w/Foot Switches

## Cockpit

---

- LCD TV/DVD **UPGRADE**
- Refrigerator Dual Volt **UPGRADE**
- Grill/ Built-In **UPGRADE**
- Air/Heat w/Defroster **UPGRADE**
- Dash Cover - Canvas **UPGRADE**
- Helm Seat - Foot Rest **UPGRADE**
- Rod Holders **UPGRADE**
- Beverage Holders (6)
- Carpet Liner, Snap-In
- Cooler, Carry-On w/Designated Storage
- Door, Cabin Entry (Sliding & Lockable) w/Skylight



- Door, Transom w/Stainless-Steel Frame & Arctic Insert
- Floor Liner, Fiberglass - Self-Bailing
- Handrails, 316 Stainless Steel
- Hardtop, Fiberglass w/Retractable Sunroof, Overhead Lighting
- Hatch, Engine Room – Electrically Actuated
- Ice Bucket, Insulated - Built-In
- Icemaker, 120V
- Lighting, LED - White
- Outlet, 12V Accessory
- Outlet, 120V GFI Protected
- Seating, Double-Wide Helm w/Flip- Up Thigh-Rise Bolster, Armrests, Heavy-Duty Pedestal w/Slide &
- Pneumatic Vertical Adjustment
- Seating, Port Double-Wide w/Flip- Up Thigh-Rise Bolster, Armrest & Fiberglass Storage Base
- Seating, Aft - U-Shaped w/Storage Below
- Steps, Molded - Deck Access
- Stereo - Amplifier, 10" Subwoofer, Digital Cockpit Remote Control & Speakers (4)
- Storage, Side Panel - Port & Starboard
- Sun Pad, Cockpit w/Storage Below
- Table, Cockpit - Fiberglass w/ Dedicated Storage
- Wet Bar w/Sink, Faucet, Solid- Surface Countertop, Stainless- Steel Handrail, Trash Receptacle & Storage Cabinet - Starboard

## Salon

---

- T.V. LCD w/DVD Drop Down **UPGRADE**
- Central Vacuum System **UPGRADE**
- Seating, L-Shaped Sofa w/Storage Below - Converts to Bed w/Filler Cushions (Ultraleather)
- Stereo, iPod Interface Port w/ Docking Station
- Stereo, Sony 12V AM/FM Single CD, Sirius Satellite Receiver w/ Antenna, Amplifier, Subwoofer, Speakers (4 cabin, 4 cockpit), Digital Cockpit Remote Control & Speaker Selector Switches
- Storage, Gunwale Cabinets
- Storage, In-Floor
- Table, Dinette w/High-Gloss Wood Surface & Dedicated Storage

---

## Galley

---

- Coffeemaker, 120V
- Countertop, Solid Surface w/Sink, Single-Lever Faucet & Sink Cover
- Handrail, Stainless Steel
- Microwave w/Stainless-Steel Front - 120V
- Power Vent, 12V w/Stainless-Steel Grill
- Refrigerator/Freezer w/Stainless- Steel Front - Dual Voltage
- Storage, Drawers w/Cutlery Insert
- Storage, Upper & Lower w/ Designated Plate & Glass Storage
- Stove, Two-Burner (Recessed) w/ Solid-Surface Cover - 120V
- Trash Receptacle

---

## Forward Stateroom

---

- Bed, Full-Size Island-Style w/ Mattress, Electrically Actuated Extension & Posturepedic Backrest w/Visco Elastic Foam Mattress & Drawer Storage Below
- Decorative Rope Locker Bulkhead w/ Accent Lighting
- Door, Privacy - Handcrafted Solid Wood w/Translucent Screens
- Storage, Hanging Lockers (2) – Port & Starboard
- Linens - Pillows, Sheets & Coordinated Spread
- Lighting, Task - 12V, Port & Starboard (at Head of Bed)
- Storage, Gunwale Cabinets - Port & Starboard
- TV, 22" Flatscreen w/DVD Player

---

## Forward Shower

---

- Curtain, Shower
- Door, Privacy - Access from Forward Stateroom
- Floors, Tile
- Handrails, Stainless Steel
- Robe Hook
- Shower w/Seat, Adjustable Shower Wand & Dedicated Shampoo Bottle Storage
- Storage, Gunwale Cabinet

---

## Forward / Day Head

---

- Bathroom Tissue Holder
- Door, Privacy - Access from Forward Stateroom & Salon
- Floors, Tile
- Handrails, Stainless-Steel
- Head, VacuFlush
- Power Vent, 12V w/Stainless-Steel Grill
- Robe Hook
- Speakers (2)
- Storage Drawers - Under Bed (2)
- Storage, Gunwale Cabinet - Mirrored
- Towel Bar
- Towels - Sea Ray
- Vanity w/Solid-Surface Countertop, Sink, Faucet & Storage Below

---

## Mid Stateroom / Media Room

---

- Curtain, Privacy w/Dedicated Storage
- Entertainment System: - TV, 40" Flatscreen w/DVD Player & Gaming System Port - Surround Sound Audio (1 TV, 1 Bose 3-2-1) - Audio/DVD Player (Media Room)
- Hanging Locker w/Light - Port & Starboard
- Lighting, Blue LED Accent
- Ottomans, (2) Movable w/Dual-Purpose Tops (Cushions or Cocktail Tables) & Storage Below
- Seating, Conversation Pit – Converts to Double Berth w/Slide-Out Base (Ultraleather)
- Storage, Cabinet - Starboard

---

## Helm / Electronics

---

### Control Station:

- Alarms, High-Water - Bilge & Cabin
- Battery Parallel Switch - Engines
- Compass
- Dash, Gel Coated - Agate
- Horns, Air (Concealed) – Dual Trumpet
- Instrument Panel, High-Gloss
- Power Steering, Hydraulic w/Wood Accent Isotta Tilt Wheel
- Shift & Throttle Controls – Electronic (MerCruiser DTS)

- SmartCraft Diagnostics: - Instrumentation, Custom Sea Ray SmartCraft w/Low- Glare Blue Night Lighting & Chrome Bezels - 4-in-1 Multigauges (2) (Includes: Fuel Level, Oil Pressure, Voltmeter & Water Temperature) - Tachometers (2)
- SmartCraft VesselView Display: - Propulsion: Engine Hour Meters, Engine Status, Performance & Fuel, Peak Performance, Boost Pressure, Troll Control & Cruise Control - Vessel: Vessel Status, Tank Status, Steering Position & Generator Data

### Electronics:

- Raymarine E120W Chart Plotter/Radar **UPGRADE**
- Raymarine E120W Chart Plotter Only **UPGRADE**
- Autopilot, Integrated w/Axius or Optional Zeus System (Waypoint Control Requires Chartplotter)
- Electronics Circuit, 12V/50 Amp
- VHF Radio w/Remote Speaker & 8' Fiberglass Antenna

## Mechanical / Engine

---

### Engines:

- Twin Cummins Zeus CMD QSB 480 HO (T-459PHP) DSL **UPGRADE**
- Hours: 165

### Generator:

- 10 kW Kohler Low CO - Gas, 120V/60 Cycle w/Sound Shield, Remote Start, Muffler, Closed Cooling, Seacock & Seawater Strainer & SmartCraft Interfacing

### Fuel System:

- Fuel Filters, Remote (Racor Filters for Diesel Engines)
- Fuel Lines, USCG - Type A-1
- Fuel Tanks, Aluminum w/Electric Shutoff Valves (Manual Valves for Diesel) & Ultrasonic Sending Units
- Fuel Transfer Pump, Electric (Available Only w/Diesel Engines)

### Waste Systems:

- Macerator w/Seacock Interlock System **UPGRADE**
- Head System, VacuFlush
- Holding Tank Level Indicators – MDP & Head
- Holding Tank w/Dockside Pump-Out
- Sump Box w/Pump – Automatic

### Water System:

- Freshwater Washdown Spigots - Transom & Engine Room
- Manifold System w/Shutoff Valves
- Pressure Water System w/12V Pump & Charcoal Filtration System
- Shower, Cockpit - Hot & Cold
- Water Heater, 120V (11 Gallon)
- Water Inlet, Dockside

---

## Electrical Systems

---

- Batteries w/Trays (4)
- Battery Charger/Converter, 120V/ 40 Amp/12V
- Battery Switches, 2-Way Solenoid Activated (MDP & Bilge)
- Cable TV System w/Inlet (Includes Phone Inlet), TV & Phone Shore Cords, Coax Outlets, Gain Control &
- Omni Directional Antenna
- Galvanic Isolators (2)
- Shore Power Transformer, 240V/50 Amp/60 Cycle/12Kva
- Panel, DC Circuit Breaker - Remote
- Panel, DC Main Breaker
- Panel, Main Distribution - AC
- Panel, Main Distribution – DC Shore Power, CableMaster, 240V/50 Amp/60 Cycle w/75' Cord
- Wiring, Color-Coded w/Chafe Protection

---

## Underwater Gear

---

- Propellers, Stainless Steel
- Seacocks (On All Underwater Fittings)
- Seawater Strainers
- Trim Tabs, Hydraulic (Integrated w/ Zeus System)

---

## Исключения

---

При продаже яхты исключаются личные вещи владельца.

---

## Отказ от ответственности

---

Компания предоставляет описание судна или яхты добросовестно, но не может гарантировать точность этой информации, а также не ручается за техническое состояние. Покупатель должен проинструктировать своих агентов или оценщиков исследовать представленную информацию более подробно, по собственному желанию. Продажа судна или яхты, изменение цены или снятие с продажи будет происходить без предварительного уведомления.

# ФОТОГРАФИИ

**Port Profile**



**Bow Profile**



**Port Aft Profile**



**Transom Profile**



**Our Trade Transom**



**Aft Deck Forward**



## Our Trade Collage



## Aft Sunpad (1)



## Aft Sunpad (2)



## Cockpit Forward



## Cockpit TV / Sink / Grill



## Helm Station Overview





**Helm Double Companion Chair**



**Helm (1)**



**Helm (2)**



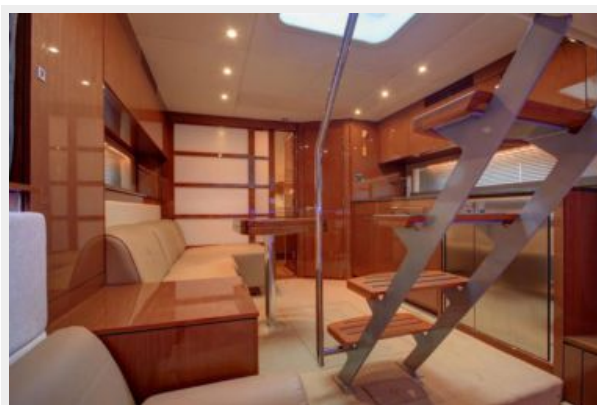
**Helm Electronics (1)**



**Helm Electronics (2)**



**Stairway to Lower Companion / Salon Forward**



**Salon / Dinette**



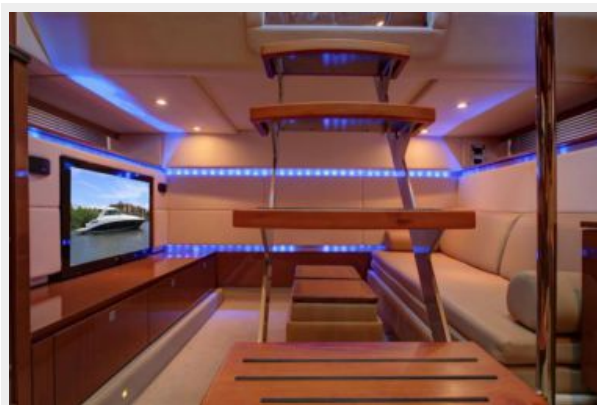
**Mid Stateroom / Media Room Forward**



**Mid Stateroom / Media Room Sofa**



**Mid Stateroom / Media Room Aft**



**Mid Stateroom / Media Room TV To Starboard**



**Mid Stateroom / Media Room To Starboard Aft**



**Mid Stateroom / Media Room To Starboard**



**Galley Aft**



**Master / Forward Stateroom**



**Master / Forward Stateroom To Port**



**Day Head (1)**



**Master / Forward Stateroom Starboard**



**Day Head (2)**



**Day Head Shower**



**Galley Starboard**



**Salon Forward**



**Salon Sofa To Port**



**Windlass**



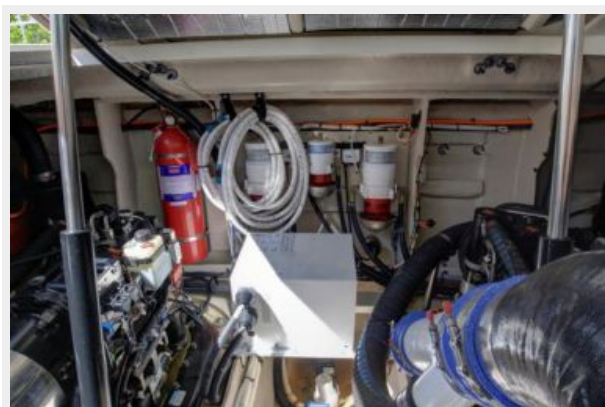
**Raymarine Radar**



**Engine Room**



**Engine Room**



**Engine Room**



**Engine Room**



**Engine Room**



# КОНТАКТЫ

---

Андрей Шестаков (Andrey Shestakov) – ведущий яхтенный брокер отдела продаж яхт и судов компании Shestakov Yacht Sales Inc. Официальный представитель Shestakov Yacht Sales Inc. для русскоговорящих клиентов в центральном офисе компании в Майами/Форт Лодердейл/Флорида/США.

## Контактная информация

---

Email: [andrey@shestakovyachtsales.com](mailto:andrey@shestakovyachtsales.com)

Web: [shestakovyachtsales.com](http://shestakovyachtsales.com)

## Телефоны

---

Краснодарский край: **+7(918)465-66-44**

США, Майами, Флорида: **+1(954)274-4435**

## Время работы

---

Понедельник – Суббота: **9:00 - 21:00**  
EDT

Воскресенье: **Закрето**

## Адрес

---



Harbour Towne Marina, 850 NE 3rd St,  
STE 213, Dania, FL 33004