

VIKING CONVERTIBLE — VIKING



Судостроитель: VIKING

Год постройки: 2005

Модель: Катер для спортивной рыбалки

Цена: **ЦЕНА ЯХТЫ ПО ЗАПРОСУ**

Местонахождение: United States

Длина общая: 56' 0" (17.07m)

Ширина: 18' 2" (5.54m)

Макс. осадка: 4' 10" (1.47m)

Крейс. скорость: 33 Kts. (38 MPH)

Макс. скорость: 38 Kts. (44 MPH)

Купить **Viking Convertible — VIKING** а также выбрать подходящую вам яхту из нашего каталога яхт вам поможет опытный яхтенный брокер Андрей Шестаков. На сегодняшний день компания **Shestakov Yacht Sales Inc.** имеет большое количество яхт в собственном списке продаж, а также тесно сотрудничает со всеми крупными яхтенными производителями по всему миру.

Для того чтобы купить яхту **Viking Convertible — VIKING** а также проконсультироваться по любому вопросу связанному с покупкой, продажей, чартером яхт позвоните по телефону **+7(918)465-66-44**.

ОГЛАВЛЕНИЕ

ОГЛАВЛЕНИЕ	2
ХАРАКТЕРИСТИКИ	5
Обзор	5
Основная информация	5
Размеры	5
Скорость, вместимость и масса	6
Размещение	6
Корпус и палуба	6
Информация о двигателе	6
ПОДРОБНОЕ ОПИСАНИЕ	7
Salon	7
Galley	7
Guest Stateroom	8
Guest Head	8
VIP Forward Stateroom	8
Master Stateroom	9
Master Head	9
Cockpit	10
Deck Equipment	10
Flybridge	11
Engine Room	11
Hull	12
Electrical Equipment	13
Fishing Equipment	13
Electronics	13
Исключения	14
Отказ от ответственности	14
ФОТОГРАФИИ	15

Salon	15
Salon/Galley	15
Salon Seating	15
Salon Seating	15
Dining	15
Galley	15
Hallway	16
Galley	16
Cabin	16
Cabin	16
Guest Head	17
Washer & Dryer	17
VIP	17
VIP	17
Master Cabin	17
Master Cabin	17
Master Cabin	18
Master Cabin	18
Master Head	18
Aft	18
Aft	18
Flybridge	18
Flybridge	19
Tower	19
Flybridge	19
Flybridge	19
Flybridge	19
Flybridge	19
Helm Seating	20

Tender	20
Tender	20
Tender	20
Engine Room	22
Engine Room	22
Engine Room	22
Engine Room	22
Profile	22
Profil - Starboard side	23
Profile - Port side	23
КОНТАКТЫ	24
Контактная информация	24
Телефоны	24
Время работы	24
Адрес	24

ХАРАКТЕРИСТИКИ

Обзор

MOTIVATED SELLER! RECENT PRICE REDUCTION!

RAPTOR is one of the nicest, cleanest and well equipped 56' Viking Yachts on the market. Ice blue hull, teak pod helm, Palm Beach tower, 157 sq ft teak cockpit, underwater exhaust. This vessel is a three stateroom - two head layout with many of the Viking upgrades including granite countertops throughout. This boat is set up for a serious fisherman or family cruising!

RAPTOR features the latest layout available in a 56 Viking. Highlights include an athwartship master berth, VIP layout forward and the starboard stateroom features upper & lower L-shaped berths.

The main salon is accessed via an electric sliding door. The large L-shaped lounge is aft to port. The galley is forward to port and the very comfortable 5 place dinette is opposite. Many upgrades were implemented when this custom yacht was built, including granite, additional teak accents and a totally custom interior along with a myriad of lighting, hardware and convenient features.

A professional set of photograph accompanies this listing and these pictures will highlight the many custom features and applications found on RAPTOR

Основная информация

Тип судна: Катер для спортивной рыбалки

Подкатегория: Convertible

Модельный год: 2005

Год постройки: 2005

Страна: United States

Размеры

Длина общая: 56' 0" (17.07m)

Ширина: 18' 2" (5.54m)

Макс. осадка: 4' 10" (1.47m)

Скорость, вместимость и масса

Крейс. скорость: 33 Kts. (38 MPH)

Макс. скорость: 38 Kts. (44 MPH)

Водоизмещение: 74400 Pounds

Вместимость воды: 240 Gallons

Вместимость сточного бака: 125 Gallons **Объем топливного бака:** 1701 Gallons

Размещение

Всего кают: 3

Всего ком. состава: 2

Корпус и палуба

Материал корпуса: Fiberglass

Информация о двигателе

Двигатели: 2

Производитель: MTU

Модель: 12V2000

Тип двигателя: Inboard

Тип топлива: Diesel

ПОДРОБНОЕ ОПИСАНИЕ

Salon

Premier edition décor package

Home theater system with 42 inch Sony Plasma television over dinette, Bose DVD/CD player, VCR and FM stereo with surround sound

Stereo speakers – multi directional

Upgraded Bose Entertainment system

Main electrical service panel

Full canvas carpet runner

Teak cocktail table w/ hi-low mechanism

Custom wallcovering

New carpet

Wrapped hatch carpet installation

Amtico teak and holly flooring at salon entrance

L-shaped ultraleather Pecan lounge with rod storage underneath

Teak cabinetry with drawers and bottle storage

Upholstery and window treatments

Overhead recessed Halogen lighting

All interior cabinetry is high gloss

Galley

Custom countertop : Granite Color: Vincenzo

Under-counter refrigerator & freezer with drawers

Trash compactor (Kenmore)

4-burner surface mount range

Amtico teak and holly flooring

Microwave/convection oven

Storage cabinets with 4 extended pullout drawers

Guest Stateroom

Upper and Lower crossover berths with drawer storage under lower bunk

Storage drawers located under hanging locker

Maple-lined Hanging locker

Overhead Halogen lights

Stereo speakers recessed in soffit tied to salon stereo

New Carpet

Guest Head

Laundry center with stackable Washer & Dryer behind teak door

Stall shower with brass fixtures

Granite countertop

Lower vanity with teak face

Mirrored ceiling

Overhead recessed Halogen lighting

120V receptacle

Amtico flooring

VacuFlush

VIP Forward Stateroom

VIP crossover layout

15 inch flat screen TV

Stereo speakers recessed into headliner tied to salon stereo

Overhead Halogen lights

New Carpet

Teak storage cabinets port & starboard

Storage drawer under bed (2) large drawers

Upper single berth against port hullside with storage cabinet

Lower berth against starboard and hullside with storage cabinet

Teak maple-lined hanging locker

Master Stateroom

Majilite headliner • New carpet

Queen size walk-around athwart ship bed

Gas piston lift-up bed top with maple-lined storage

(2) maple-lined hanging lockers with mirrored doors

(2) End tables with storage, drawers and lamps

20 inch Sharp LCD flat-screen TV

DVD player

Drawer storage under bed (2 large drawers)

Overhead Halogen lights

Master Head

One piece custom frameless shower door

Stall shower with brass fixtures

Granite counter top

Lower vanity with teak face

Linen storage

Overhead recessed Halogen lighting

120V receptacle

Storage cabinet with mirrored door

Mirrored ceiling

Amtico flooring

VacuFlush head system

Cockpit

Custom teak deck

Transom coaming solid with fish door

Tackle station replaces the Mezzanine (custom cushions to go on top for added seating with AC vents above)

Eskimo ice-maker

Awlgripped lazarette

Transom swim steps

(2) Live well in sole

Refrigerated cockpit step box

12V outlets forward under coaming

Underwater lights

Deck Equipment

300' anchor rope with 15' chain

Pulpit w/ Windlass

Freshwater washdown at bow inside anchor locker

3 Bomar deck hatches

Rubrail painted to match gel coat

Custom bow rail

Undermount flybridge side handrails

Marquipt Davitt 1500

Flybridge

Drop down radio box

All electronics are flush mounted

Fuel transfer switch

Port side handrail

Battery parallel switch

Electronics breaker panel under helm

Teaser reels in hardtop

Teak helmpod with single lever controls

Refrigerated FB drink box

Blue Water helm chairs

Power assisted steering with stainless steel wheel

Recessed electronics boxes with see-thru panels

Control panel for synchronizer, troll, low idle

Manual override control panel

Moritz monitor/alarm

Engine Room

Twin MTU 12V2000 1520 hp engines

Voltage stabilizer transformer

Dual racor fuel filters per engine

Onan 21.5 KW generator with 4799 hours

Generator gas water separator muffler

Racor fuel filter on generator

Dripless packing seals

Delta ventilation system

Gauges for digital tach, engine water temp, engine oil pressure

Fire suppression system auto & manual

Awlgrippped engine room

Fuel transfer system

Oil changing system

Watermaker

Hot water heater

Power assist hydraulic steering

Awlgrip brass thru-hulls, sea strainer

1185 gallon aft fuel tank

24V Fuel priming pumps

Hull

Ice blue hull color

Fiberglass side thru-hulls

External sea strainers

Oval exhaust outlets at transom

Trim tabs

Forward bilge and lazarette painted with white awlgrip. Rub rail painted to match topsides

Viking blue bottom paint

Prop pocket design

Blue boot stripe

Electrical Equipment

Breaker panels in engine room and companionway

2 phase three battery chargers

Master breaker panel in salon

Batteries in FRP boxes in engine room

21.5 KW Onan generator with sound enclosure

Backup parallel and crossover switching for emergency use, located in engine room

12V and 24V - DC system

110V and 220V - AC system

Fishing Equipment

Tuna tower with controls and steering

Miyah Epoch electric teaser reels in hardtop

6 rod rocket launcher

Fish-box

Live baitwell

Rupp outriggers with triple spreaders flybridge release

Rocket launcher & rigging tray (Bluewater)

Custom on deck livewells

Electronics

Tuna tower with controls and steering

Miyah Epoch electric teaser reels in hardtop

6 rod rocket launcher

Fish-box

Live baitwell

Rupp outriggers with triple spreaders flybridge release

Rocket launcher & rigging tray (Bluewater)

Custom on deck livewells

Исключения

При продаже яхты исключаются личные вещи владельца.

Отказ от ответственности

Компания предоставляет описание судна или яхты добросовестно, но не может гарантировать точность этой информации, а также не ручается за техническое состояние. Покупатель должен проинструктировать своих агентов или оценщиков исследовать представленную информацию более подробно, по собственному желанию. Продажа судна или яхты, изменение цены или снятие с продажи будет происходить без предварительного уведомления.

ФОТОГРАФИИ

Salon



Salon/Galley



Salon Seating



Salon Seating



Dining



Galley



Galley



Hallway



Cabin



Cabin



Guest Head



Washer & Dryer



VIP



VIP



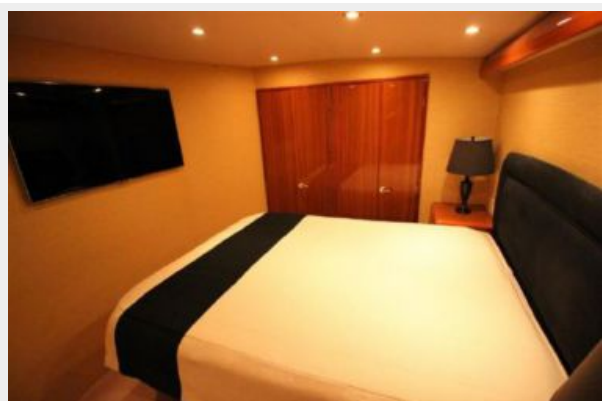
Master Cabin



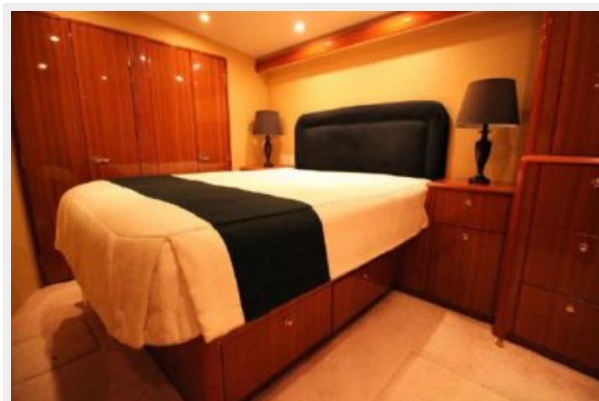
Master Cabin



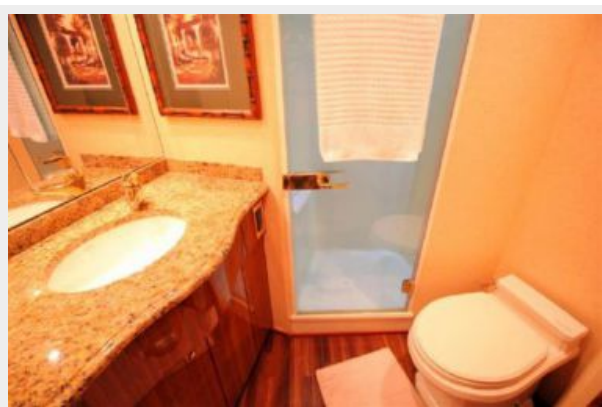
Master Cabin



Master Cabin



Master Head



Aft



Aft



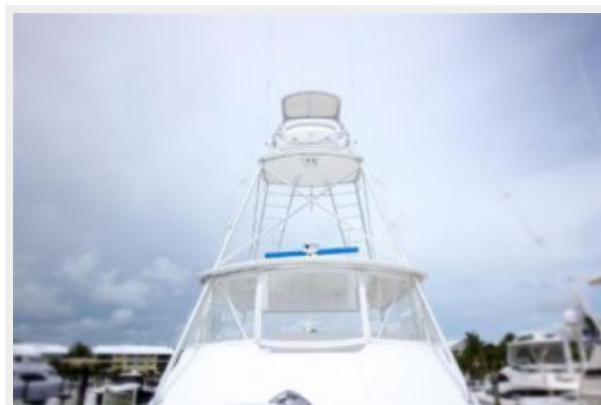
Flybridge



Flybridge



Tower



Flybridge



Flybridge



Flybridge



Flybridge



Helm Seating



Tender



Tender



Tender





Engine Room



Engine Room



Engine Room



Engine Room



Profile



Profil - Starboard side



Profile - Port side



КОНТАКТЫ

Андрей Шестаков (Andrey Shestakov) – ведущий яхтенный брокер отдела продаж яхт и судов компании Shestakov Yacht Sales Inc. Официальный представитель Shestakov Yacht Sales Inc. для русскоговорящих клиентов в центральном офисе компании в Майами/Форт Лодердейл/Флорида/США.

Контактная информация

Email: andrey@shestakovyachtsales.com

Web: shestakovyachtsales.com

Телефоны

Краснодарский край: **+7(918)465-66-44**

США, Майами, Флорида: **+1(954)274-4435**

Время работы

Понедельник – Суббота: **9:00 - 21:00**
EDT

Воскресенье: **Закрыто**

Адрес



Harbour Towne Marina, 850 NE 3rd St,
STE 213, Dania, FL 33004