

## 360 — ISA YACHTS



**Builder:** ISA YACHTS

**Year Built:** 2003

**Model:** Motor Yacht

**Price:** PRICE ON APPLICATION

**Location:** France

**LOA:** 155' 11" (47.50m)

**Beam:** 29' 3" (8.90m)

**Min Draft:** 7' 11" (2.40m)

**Max Draft:** 8' 11" (2.70m)

**Cruise Speed:** 13 Kts. (15 MPH)

**Max Speed:** 16 Kts. (18 MPH)

Our experienced yacht broker, Andrey Shestakov, will help you choose and buy a yacht that best suits your needs 360 — ISA YACHTS from our catalogue. Presently, at Shestakov Yacht Sales Inc., we have a wide variety of yachts available on our sale's list. We also work in close contact with all the big yacht manufacturers from all over the world.

If you would like to buy a yacht 360 — ISA YACHTS or would like help answering any questions concerning purchasing, selling or chartering a yacht, please call +1(954)274-4435

---

# TABLE OF CONTENTS

---

TABLE OF CONTENTS	2
SPECIFICATIONS	3
Basic Information	3
Dimensions	3
Speed, Capacities and Weight	3
Accommodations	3
Hull and Deck Information	3
Engine Information	4
DETAILED INFORMATION	5
DETAILED SPECIFICATIONS	5
Exclusions	19
Disclaimer	19
PHOTOS	20
CONTACTS	28
Contact details	28
Telephones	28
Office hours	28
Address	28

---

# SPECIFICATIONS

---

## Basic Information

---

**Category:** Motor Yacht

**Model Year:** 2003

**Year Built:** 2003

**Refit Year:** 2013

**Country:** France

## Dimensions

---

**LOA:** 155' 11" (47.50m)

**Beam:** 29' 3" (8.90m)

**Min Draft:** 7' 11" (2.40m)

**Max Draft:** 8' 11" (2.70m)

## Speed, Capacities and Weight

---

**Cruise Speed:** 13 Kts. (15 MPH)

**Max Speed:** 16 Kts. (18 MPH)

**Gross Tonnage:** 498 Pounds

**Water Capacity:** 3962.58078 Gallons

**Fuel Capacity:** 19548.731848 Gallons

## Accommodations

---

**Total Cabins:** 5

**Sleeps:** 10

**Captain Cabin:** True

**Crew Sleeps:** 9

## Hull and Deck Information

---

**Hull Material:** Steel

---

## Engine Information

---

**Engines:** 2

**Manufacturer:** MTU

**Model:** 12V4000M 70

# DETAILED INFORMATION

## DETAILED SPECIFICATIONS

### 1. MAIN CHARACTERISTICS

<b>TYPE</b>	Displacement Motor Yacht
<b>HULL NO.</b>	470.1
<b>MODEL</b>	ISA 470
<b>BUILDER</b>	International Shipyard Ancona, Italy
<b>NAVAL ARCHITECT</b>	International Shipyard Ancona, Italy
<b>EXTERIOR DESIGN</b>	Walter Franchini Architetto
<b>INTERIOR DESIGN REFIT</b>	Colacion Studios and Laidlaw Schultz Architects
<b>INTERIOR DESIGN ORIGINAL</b>	Janet Leroy
<b>YEAR</b>	2003
<b>REFIT</b>	2013/ 2010
<b>CALL SIGN</b>	ZCIW9
<b>IMO</b>	1007897
<b>CLASSIFICATION</b>	ABS; MCA compliant
<b>CONSTRUCTION</b>	Steel hull; Aluminium S'tsstructure; Teak laid Decks
<b>CREW</b>	9
<b>FLAG</b>	Cayman Islands
<b>ENGINES</b>	2 x 2,340Hp MTU 12V 4000 M70
<b>GT</b>	498 tons
<b>NT</b>	149 tons

### 2. DIMENSIONS

<b>LOA</b>	<b>47.50m / 155'85"</b>
<b>BEAM</b>	<b>8.90m / 29'2"</b>
<b>DRAFT</b>	<b>2.70m / 8'10"</b>

### 3. SPEED & RANGE UNDER POWER

<b>MAXIMUM SPEED</b>	16 knots
<b>CRUISING SPEED</b>	13 knots
<b>FUEL CONSUMPTION</b>	340 litres/ hour @ cruising speed (engines + generators)
<b>RANGE</b>	2,700 nm @ 13 knots

### 4. CAPACITIES

<b>ACCOMMODATION</b>	10 x Guests in 5 cabins  1 x Master Suite, 2 VIP, 2 Twin Cabins
<b>CREW</b>	9 x Crew + 1 x Captain's cabin
<b>FUEL</b>	74,000 litres / 19,549 US gallons in 12 tanks
<b>FRESH WATER</b>	15,000 litres / 3,963 US gallons in 2 tanks
<b>LUBE OIL</b>	1,150 litres /304 US gallons in 1 x tank
<b>DIRTY LUBE OIL</b>	990 litres /262 US gallons in 1 x tank
<b>GREY &amp; BLACK WATER</b>	11,110 litres /2,935 US gallons in 3 x tanks
<b>SLUDGE</b>	800 litres /211 US gallons in 1 x tank
<b>BILGE</b>	3,600 litres /951 US gallons in 1 x tank

### 5. ACCOMMODATION

<b>OWNER</b>	Full width double master cabin with bathroom
--------------	--

en-suite with separate shower and sauna

## **GUESTS'**

1 x Full width double VIP cabin with shower en-suite

1 x Full width double cabin

berth and shower room en-suite

2 x Twin cabins with shower rooms en suite

## **CREW**

Captain's double cabin with shower room en-suite

4 x Twin upper & lower berth cabins with

shower rooms en-suite

## **INTRODUCTION**

MY 360°, (ex-SONKA and APRIL FOOL) is well known to many as a yacht providing top level service combined with a cruising experience of refined luxury. The three spacious aft decks offer a host of opportunities for alfresco living with open seating, lounging and dining areas located across the decks. While the vast sundeck with its Jacuzzi pool and luxurious sun-lounging areas offer the ultimate space for recreation, the upper salon will allow guests to relax and enjoy the on-board entertainment system.

## **MAIN DECK**

The Main aft deck offers a very large surface, a table for 8 and a direct access to the upper level thanks to the 2 lateral staircases which have made the success of the ISA design.

Inside, the main deck offers one large area which includes both the main saloon and the dining saloon. The saloon is full beam and large windows allow plenty of light to shine on the Cherry, Wenge and timber woods. 10 guests can sit comfortably in the sofas and chairs and the round table extends to 10 also. A large screen LCD HD TV connected to a complete entertainment system is located on the port side.

Moving further towards the bow, is possible to access to the 4 guests cabins located on the lower deck or to the upper saloon using a central staircase. It features a guest day head and the main galley.

The well-appointed main deck owner's suite, features an en-suite bathroom and study. The study offers a large desk on starboard and leads into the main part of the cabin with a king size bed, walk-in closet and access to the bathroom. The owner's bathroom is very spacious and offers a Runner with LCD TV, a large American shower, a sauna, a bath, vanity mirror and 2 sinks. The bathroom is very nicely decorated with Onyx and red carpet.

The aft main deck offers an outside dining table for 8 with an access to the saloon or to the upper decks using two beautifully designed staircases.

## **LOWER DECK**

The lower deck accommodates four guest staterooms, two VIP and two Twin cabins, all en-suite. The same meticulous attention to detail we have found in the Master Cabin has been maintained to ensure the highest standards of luxury and elegance.

## **UPPER DECK**

From the aft balcony on the upper deck, two sliding doors open to the upper lounge. This area features a design sofa where can seat comfortably 3 persons and 4 armchairs. The chimney, placed in front of this conversation space, add a bit of cosy and intimate atmosphere.

On the port side is a small desk with computer facilities. On starboard is the access to the day head, bridge and staircase to the lower levels.

On the right side of the corridor the large pantry features a 100 plus bottle wine cellar, espresso coffee machine, fridges and more.

The bridge is located on the upper deck and offers state-of-the-art navigation equipment. Featuring unusual red sofa and pilot seats, it is also a very nice area to enjoy the crossings and sharing the navigation's experience.

## **SUNDECK**

The flybridge offers a unique panorama where the guest can be delighted from the cool breeze under a large Bimini. The Jacuzzi bath is surrounded by sun bathing cushions and features a large table for 10.

## **6. MECHANICAL EQUIPMENT**

### **ENGINES**

2 x 2,340Hp MTU 12V4000M 70-1740kW/2,000 rpm each



---

<b>ENGINE HOURS</b>	2,500 hour as of September 2014
<b>GEARBOX</b>	2 x ZF type 7540 reverse reduction with a ratio of 4.208:1
<b>PROPELLERS</b>	2 x Heliche Radiche 69"/175cm diametre with mechanically salt water lubricated 5.9"/15cm diametre shafts and Profiseal Sterntube seal
<b>STEERING SYSTEM</b>	Marsili type CL.B-401/4n electro-hydraulic system with 2 pumps and emergency back-up (remote and local)
<b>BOW THRUSTER</b>	118hp (88kW) Rodriquez Marine Systems electric bow thruster type TMS 100E with 20"/51cm diametre
<b>STERN THRUSTER</b>	60kW Rodriquez Marine Systems Hydraulic type TMS 050H with 20"/51cm diametre
<b>STABILISERS</b>	Rodriquez Marine Systems type SMS 2200 hydraulic "zero speed/at anchor" stabilisers with 21.53ft <sup>2</sup> /2.0m <sup>2</sup> fins with Allen & Bradley monitors
<b>GENERATORS</b>	2 x Kohler 125EFOZD, 125kW each
<b>GENERATOR HOURS</b>	4,504 as of Septmber 2014
<b>EMERGENCY GENERATOR</b>	1 x 55kW (@ 1,500rpm) Kohler type 55EF0Z Gen-Kleen exhaust filtration system
<b>ELECTRICITY</b>	380V/220V AC, 50Hz, 3-phase; 24V DC
<b>SHORE POWER</b>	380V/110V AC, 50/60Hz, 3-phase/mono phase
<b>BATTERIES</b>	7 x Sets of Exide Nautilus 12V DC batteries for main & generator start (including emergency generator), emergency lighting, engine control room, GMDSS/radio back-up and UPS

	2 x Custom built battery chargers (E.R. & wheelhouse)
<b>CONVERTERS</b>	Asea shore power converter 440V-110V AC, 60Hz-50Hz
<b>WATER MAKER</b>	2 x Hydromar type IBM5 Duplex with sand, UV & carbon filters, water softeners and silver sterilisation – producing approx. 4,800 litres (1268 USG) per day each
<b>FUEL SEPARATOR+ FILTERS</b>	1 x Alfa Laval type MMPX 403 SGP-11 with approx. 1,250 litres (330 US gallons) per hour capacity 2 x SWK type 2000/40/UMS in line filters (each main engine) 2 x SWK type 200/5/UMK in line filters (each main generator plus emergency generator)
<b>OIL/WATER SEPARATOR</b>	DVZ type 500VC “Oilmaster” with 500 litres (132 US gallons) per hour capacity
<b>FIRE/BILGE PUMP</b>	2 x Gabarino type IA3/140 bilge pumps (main & emergency) w/ 30,000 litres (7,925 US gallons) per hour 2 x ABS Robuston type 300T/S garage door bilge pumps with 10,800 litres (2,853 US gallons) per hour capacity Gianneschi & Ramacciotti tender garage bilge pump with 10,800 litres (2,853 US gallons) per hour capacity 2 x Gabarino type MU32/160A fire pumps (main & emergency) with 30,000 litres (7,925 US gallons) per hour capacity  (All main & emergency bilge/fire pumps are interchangeable – dual function)
<b>BOILERS</b>	2 x Gianneschi & Ramacciotti type 300 boilers with 2 x 3kW heating elements each & 300 litres/80 USG each

<b>SEWAGE TREATMENT</b>	Hamann Wassertechnik HL-CONT treatment system w/ 24,000 litres (6,340 US gallons) per day
<b>WCS</b>	Jets vacuum fresh water flush WC system
<b>AIRCONDITIONING</b>	N.R. Koeling chilled water/reverse cycle system with 2 x compressors, 23 x fan coil units throughout, fresh air unit and thermostat controls throughout

## 7. NAVIGATION EQUIPMENT

<b>MAGNETIC COMPASS</b>	1 x Jupiter
<b>GYRO COMPASS</b>	1 x Sperry Navigat X MK1
<b>AUTOMATIC PILOT</b>	Sperry Marine-Navi Pilot 4000
<b>RADAR</b>	1 x Furuno 1 x FAR 2127 B X - Band 25kW 1 x FAR2137 S-BAND 30kW
<b>TRANSPONDER</b>	2 x SART ACR
<b>AIS</b>	Furuno
<b>DGPS</b>	1 x Furuno GP150 (Wheel Mark)
<b>GPS</b>	1 x Furuno
<b>CHART PLOTTER</b>	2 x Transas sailor 4000/ paperless
<b>NAVTEX</b>	Furuno GP-37 (Wheel Mark)
<b>CHART PLOTTER</b>	2 x Full ECDIS- Transas sailor 4000/ paperless
<b>NAVTEX</b>	Furuno NX 700A + printer (Wheel Mark)
<b>WEATHER FAX</b>	1 x Furuno FAX 30
<b>LOG</b>	1 x Sperry Naviknot 350E
<b>WIND INSTRUMENTS</b>	1 x B&G H3000 pack Hydra + 4x 3000GHD + BGH23

## Analogic Wind Speed &amp; Direction Indicators

**ECHO SOUNDER**

1 x Furuno FE 700 (Wheel Mark)

1 x Furuno FCV 1200L

**8. COMMUNICATION EQUIPMENT****SATCOM**

Inmarsat-C/ Furuno Felcom 18 +SSAS+LRIT

**SATCONNECTION**

KVH Fleet V7

**SCANSAT**

LRIT T&amp;T 30272LT

**RADIO TEL**

MF/HF Furuno- FS1570 150W (Wheel Mark)

**VHF**

VHF/DSC Furuno-FM8900 25W Classe A (Wheel Mark)

VHF/DSC Raymarine RAY 240E

**LOUDHAILER**

Furuno LH3000

**LANDLINE/INTERCOM**

PABX Panasonic

**9. DECK EQUIPMENT****ANCHOR WINDLASSES**

2 x Maxwell VWC-11000 electric

**AFT WARPING CAPSTANS**

2 x Maxwell Winches VC-6000

**ANCHORS**

2 x 695lb/315Kg Pool type HHP galvanised

**ANCHOR CHAINS**

2 x 5.5 shackles/495ft/151m x 19mm galvanised cable

(NB: first ½ shackle/45ft/13.7m is stainless steel)

**BOAT CRANE & DAVITS**

Motomar 23ft/7m hydraulic crane (foredeck) with

2,646lb/1,200kg SWL @ Bow

Motomar custom made hydraulic gantry beam

(in garage) with 2,205lb/1,000kg SWL

<b>PASSERELLE</b>	Cramm 13ft/4m hydraulic with 1.6ft/0.5m extension
<b>SIDE BOARDING LADDER</b>	Motomar hydraulic side boarding ladder
<b>POOL/JACUZZI</b>	Hydro Spa – 4 peable on sun deck aft
<b>SWIMMING PLATFORM</b>	Teak laid integral swimming platform w/ lazarette entry
<b>DECK FURNITURE</b>	Tables, loungers, chairs and sun cushions
<b>SEARCHLIGHTS</b>	The Carlisle & Winch Company 15 million candle power remote controlled searchlight

## 10. ENTERTAINMENT EQUIPMENT

### MAIN SALOON

- Samsung TV
- Sky receiver + RTI remote
- DVD blue ray LG
- IPod docking station
- Onyco Amplifer
- Samsung phone intercom

### SKYLOUNGE

- Samsung plasma TV
- Sky receiver + RTI remote
- DVD blue ray Samsung
- IPod docking station
- Onyco Amplifer
- Samsung phone intercom

**MASTER CABIN**

- Samsung TV
- DVD blue ray LG
- IPod docking station
- Onyco Amplifer
- Samsung phone intercom

**MASTER PRIVATE LOUNGE**

- Samsung TV
- DVD blue ray LG
- IPod docking station
- Samsung phone intercom

**GUEST CABINS**

- Samsung TV
- DVD blue ray LG
- IPod docking station
- Samsung phone intercom

**CREW MESS /CAPTAIN`S CABIN**

- Samsung TV
- DVD blue ray LG
- DVD blue ray Samsung in captain's cabin
- IPod docking station
- Samsung phone intercom

---

## OTHER

- RTI Entertainment system throughout the yacht
- KVH M9 x 2 SAT.TV

## 11. GALLEY & LAUNDRY EQUIPMENT

### GALLEY

- 1 x Miele Dishwasher
- 2 x Large freezers
- 1 x Large refrigerator in-walk in cold room
- 1 x Hoshizaki Icemaker
- 1 x Miele microwave
- 1 x Oven
- Angelo Po Fryer / Electrical stove stop/ induction stove pop/ Grill top smooth plate
- 1 x Refrigerator
- 2 x Sliding drawers

### LAUNDRY

- 2 x Miele Washing machines (1 in laundry, 1 in garage )
- 2 x Miele Dryer machine + 1 in garage

### PANTRY SUNDECK

- 2 x Icemaker
- 3 x Bar fridge
- 1 x Dishwasher Miele
- 2 x Wine cooler Euro cave

## 12. SECURITY & SAFETY EQUIPMENT

### SAFETY

- 4 x Zodiac life rafts for 8 people
- 1 x Zodiac raft for 6 people on sundeck
- 25x Ocean rated PFD
- 22 x Immersion suits
- 2 x Life rings with smoke and light
- 2 x Life rings with 30m line
- 1 x Floating EPIRBS (GMDSS) + 1 x spare
- 1 x SART + 1 x spare
- 2 x Safety harness

### SECURITY

- CCTV system
- Panasonic CCTV system
- BNWA/AMI watch keeper
- 1 x FLIR day & night camera
- 1 x SWP security alert system
- Fire alarms
- Heat alarms

### FIRE FIGHTING

- 28 x Dry powder fire extinguishers ABC rated
- 2 x CO2 FM 200 fixed system in engine room and garage



- Fixed pump with various outlets
- 2 x BA sets and fireman outfits
- 2 x Air tanks

### 13. TENDERS & WATERSPORTS EQUIPMENT

#### TENDERS

1 x Novurania 5.30 DL with 190 HP inboard engine (9 seats)

1 x Novurania 400TR outboard 40Hp

#### WATER SPORTS

- 2 x Waverunners Seadoo RXP 255 Hp
- 1 x Kayak
- 2 x Wake boards
- 1 x Kneeboard
- 2 x Doughnuts, 1 for 2 people + 1 for 4 people
- 1 x 4 people banana
- 2 x Bicycles

#### DIVING

- 2 x Sets of Diving gear
- Dive compressor

### 14. REFIT COMMENTS

Thanks to a steady upkeep and two extensive refits between the 2010 and 2013, MY 360° looks

as a brand new yacht. Her owner has in fact not spared any effort to maintain her to the highest standards.

**In 2010** a general renovation has included the total new exterior painting, new interior decoration and design, new furniture and cushions throughout, complete new bridge and navigation system (cameras, GPS, steering, radio, radar...), the stabilizers were doubled in size making the yacht very stable both at sea and at anchor. All the services on the engines have been performed successfully and the yacht has been provided with high speed Internet WiFi.

The last refit, occurred between the **winter 2012 and the spring 2013**, has instead included the latest navigation and audio/video instruments updates, a new fire protection system, a full restoration of the machinery and the hull, updating of the water toys selection, new carpets and furnishing.

Yacht is virtually new: built in 2003, she was totally refitted in 2010 and 2013.

- Eclectic and contemporary design with a "Boutique Hotel" atmosphere
- Young, dynamic and International crew
- Zero-speed stabilization
- Many water sport activities
- Deck Jacuzzi
- Unique exterior design

## DISCLAIMER

This document is not contractual. All specifications are given in good faith and offered for informational purposes only. The publisher and company do not warrant or assume any legal liability or responsibility for the accuracy, completeness, or usefulness of any information and/or images displayed. Yacht inventory, specifications and charter prices are subject to change without prior notice. None of the text and/or images used in this brochure maybe reproduced

without written consent from the publisher

## **Exclusions**

---

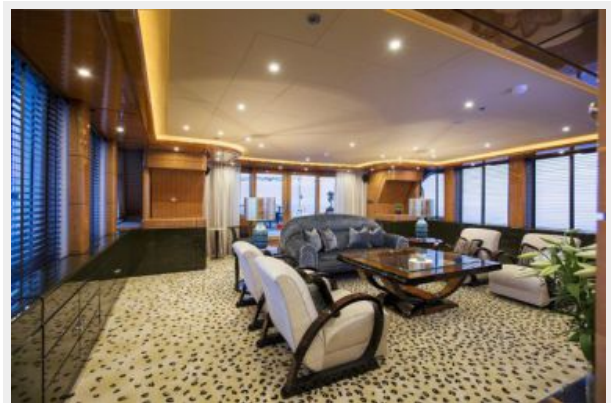
Owner's personal belongings.

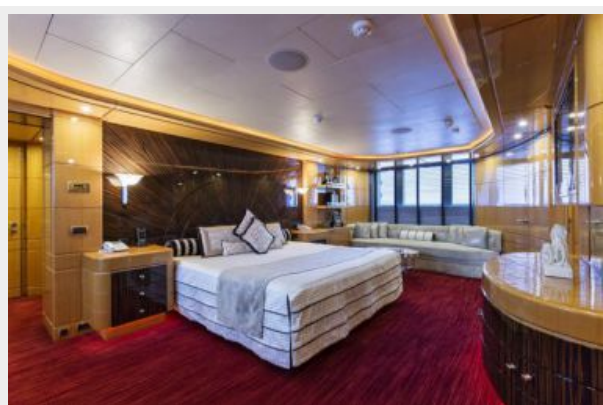
## **Disclaimer**

---

The Company offers the details of this vessel or yacht in good faith but cannot guarantee or warrant the accuracy of this information nor warrant the condition of the vessel. A buyer should instruct his representatives, agents, or his surveyors, to investigate such details as the buyer desires validated. This vessel or yacht is offered subject to prior sale, price change, or withdrawal without notice.

# PHOTOS





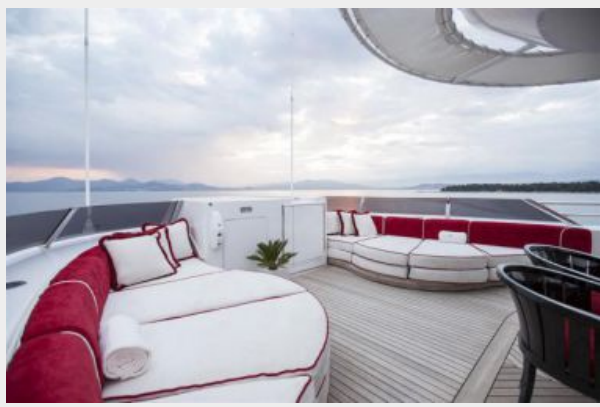


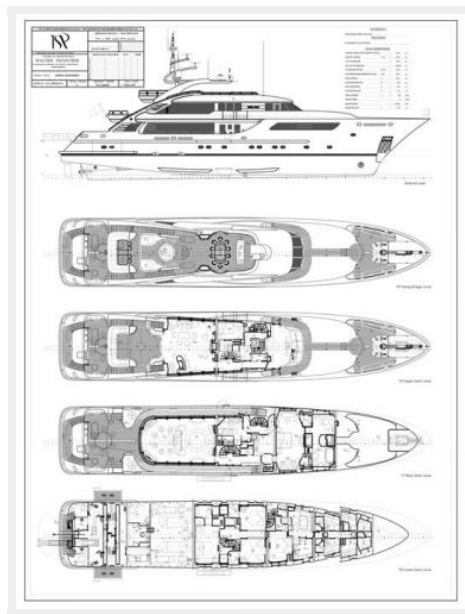












# CONTACTS

---

Andrey Shestakov, leading yacht broker of the sales department of Shestakov Yacht Sales Inc. Shestakov Yacht Sales Inc., the official representative of the Miami/Fort Lauderdale FL headquarters.

## Contact details

---

Email: [andrey@shestakovyachtsales.com](mailto:andrey@shestakovyachtsales.com)

Web: [shestakovyachtsales.com/en/](http://shestakovyachtsales.com/en/)

## Telephones

---

USA: +1(954)274-4435

## Office hours

---

Monday – Saturday: **9:00 - 21:00** EDT

Sunday: **closed**

## Address

---



Harbour Towne Marina, 850 NE 3rd St,  
STE 213, Dania, FL 33004