

360 — ISA YACHTS



Судостроитель: [ISA YACHTS](#)

Год постройки: 2003

Модель: Моторная яхта

Цена: **ЦЕНА ЯХТЫ ПО ЗАПРОСУ**

Местонахождение: France

Длина общая: 155' 11" (47.50m)

Ширина: 29' 3" (8.90m)

Мин. осадка: 7' 11" (2.40m)

Макс. осадка: 8' 11" (2.70m)

Крейс. скорость: 13 Kts. (15 MPH)

Макс. скорость: 16 Kts. (18 MPH)

Купить 360 — ISA YACHTS а также выбрать подходящую вам яхту из нашего каталога яхт вам поможет опытный яхтенный брокер Андрей Шестаков. На сегодняшний день компания Shestakov Yacht Sales Inc. имеет большое количество яхт в собственном списке продаж, а также тесно сотрудничает со всеми крупными яхтенными производителями по всему миру.

Для того чтобы купить яхту 360 — ISA YACHTS а также проконсультироваться по любому вопросу связанному с покупкой, продажей, чартером яхт позвоните по телефону **+7(918)465-66-44**.

ОГЛАВЛЕНИЕ

ОГЛАВЛЕНИЕ	2
ХАРАКТЕРИСТИКИ	3
Основная информация	3
Размеры	3
Скорость, вместимость и масса	3
Размещение	3
Корпус и палуба	3
Информация о двигателе	4
ПОДРОБНОЕ ОПИСАНИЕ	5
DETAILED SPECIFICATIONS	5
Исключения	19
Отказ от ответственности	19
ФОТОГРАФИИ	20
КОНТАКТЫ	28
Контактная информация	28
Телефоны	28
Время работы	28
Адрес	28

ХАРАКТЕРИСТИКИ

Основная информация

Тип судна: Моторная яхта

Модельный год: 2003

Год постройки: 2003

Год обновления: 2013

Страна: France

Размеры

Длина общая: 155' 11" (47.50m)

Ширина: 29' 3" (8.90m)

Мин. осадка: 7' 11" (2.40m)

Макс. осадка: 8' 11" (2.70m)

Скорость, вместимость и масса

Крейс. скорость: 13 Kts. (15 MPH)

Макс. скорость: 16 Kts. (18 MPH)

Чистый вес: 498 Pounds

Вместимость воды: 3962.58078 Gallons

Объем топливного бака: 19548.731848
Gallons

Размещение

Всего кают: 5

Спальные места: 10

Каюта капитана: Да

Спальных мест экипажа: 9

Корпус и палуба

Материал корпуса: Steel

Информация о двигателе

Двигатели: 2

Производитель: MTU

Модель: 12V4000M 70

ПОДРОБНОЕ ОПИСАНИЕ

DETAILED SPECIFICATIONS

1. MAIN CHARACTERISTICS

TYPE	Displacement Motor Yacht
HULL NO.	470.1
MODEL	ISA 470
BUILDER	International Shipyard Ancona, Italy
NAVAL ARCHITECT	International Shipyard Ancona, Italy
EXTERIOR DESIGN	Walter Franchini Architetto
INTERIOR DESIGN REFIT	Colacion Studios and Laidlaw Schultz Architects
INTERIOR DESIGN ORIGINAL	Janet Leroy
YEAR	2003
REFIT	2013/ 2010
CALL SIGN	ZCIW9
IMO	1007897
CLASSIFICATION	ABS; MCA compliant
CONSTRUCTION	Steel hull; Aluminium S'tsstructure; Teak laid Decks
CREW	9
FLAG	Cayman Islands
ENGINES	2 x 2,340Hp MTU 12V 4000 M70
GT	498 tons
NT	149 tons

2. DIMENSIONS

LOA	47.50m / 155'85"
BEAM	8.90m / 29'2"
DRAFT	2.70m / 8'10"

3. SPEED & RANGE UNDER POWER

MAXIMUM SPEED	16 knots
CRUISING SPEED	13 knots
FUEL CONSUMPTION	340 litres/ hour @ cruising speed (engines + generators)
RANGE	2,700 nm @ 13 knots

4. CAPACITIES

ACCOMMODATION	10 x Guests in 5 cabins 1 x Master Suite, 2 VIP, 2 Twin Cabins
CREW	9 x Crew + 1 x Captain's cabin
FUEL	74,000 litres / 19,549 US gallons in 12 tanks
FRESH WATER	15,000 litres / 3,963 US gallons in 2 tanks
LUBE OIL	1,150 litres /304 US gallons in 1 x tank
DIRTY LUBE OIL	990 litres /262 US gallons in 1 x tank
GREY & BLACK WATER	11,110 litres /2,935 US gallons in 3 x tanks
SLUDGE	800 litres /211 US gallons in 1 x tank
BILGE	3,600 litres /951 US gallons in 1 x tank

5. ACCOMMODATION

OWNER	Full width double master cabin with bathroom
--------------	--

en-suite with separate shower and sauna

GUESTS'

1 x Full width double VIP cabin with shower en-suite

1 x Full width double cabin

berth and shower room en-suite

2 x Twin cabins with shower rooms en suite

CREW

Captain's double cabin with shower room en-suite

4 x Twin upper & lower berth cabins with

shower rooms en-suite

INTRODUCTION

MY 360°, (ex-SONKA and APRIL FOOL) is well known to many as a yacht providing top level service combined with a cruising experience of refined luxury. The three spacious aft decks offer a host of opportunities for alfresco living with open seating, lounging and dining areas located across the decks. While the vast sundeck with its Jacuzzi pool and luxurious sun-lounging areas offer the ultimate space for recreation, the upper salon will allow guests to relax and enjoy the on-board entertainment system.

MAIN DECK

The Main aft deck offers a very large surface, a table for 8 and a direct access to the upper level thanks to the 2 lateral staircases which have made the success of the ISA design.

Inside, the main deck offers one large area which includes both the main saloon and the dining saloon. The saloon is full beam and large windows allow plenty of light to shine on the Cherry, Wenge and timber woods. 10 guests can sit comfortably in the sofas and chairs and the round table extends to 10 also. A large screen LCD HD TV connected to a complete entertainment system is located on the port side.

Moving further towards the bow, is possible to access to the 4 guests cabins located on the lower deck or to the upper saloon using a central staircase. It features a guest day head and the main galley.

The well-appointed main deck owner's suite, features an en-suite bathroom and study. The study offers a large desk on starboard and leads into the main part of the cabin with a king size bed, walk-in closet and access to the bathroom. The owner's bathroom is very spacious and offers a Runner with LCD TV, a large American shower, a sauna, a bath, vanity mirror and 2 sinks. The bathroom is very nicely decorated with Onyx and red carpet.

The aft main deck offers an outside dining table for 8 with an access to the saloon or to the upper decks using two beautifully designed staircases.

LOWER DECK

The lower deck accommodates four guest staterooms, two VIP and two Twin cabins, all en-suite. The same meticulous attention to detail we have found in the Master Cabin has been maintained to ensure the highest standards of luxury and elegance.

UPPER DECK

From the aft balcony on the upper deck, two sliding doors open to the upper lounge. This area features a design sofa where can seat comfortably 3 persons and 4 armchairs. The chimney, placed in front of this conversation space, add a bit of cosy and intimate atmosphere.

On the port side is a small desk with computer facilities. On starboard is the access to the day head, bridge and staircase to the lower levels.

On the right side of the corridor the large pantry features a 100 plus bottle wine cellar, espresso coffee machine, fridges and more.

The bridge is located on the upper deck and offers state-of-the-art navigation equipment. Featuring unusual red sofa and pilot seats, it is also a very nice area to enjoy the crossings and sharing the navigation's experience.

SUNDECK

The flybridge offers a unique panorama where the guest can be delighted from the cool breeze under a large Bimini. The Jacuzzi bath is surrounded by sun bathing cushions and features a large table for 10.

6. MECHANICAL EQUIPMENT

ENGINES

2 x 2,340Hp MTU 12V4000M 70-1740kW/2,000 rpm each

ENGINE HOURS	2,500 hour as of September 2014
GEARBOX	2 x ZF type 7540 reverse reduction with a ratio of 4.208:1
PROPELLERS	2 x Heliche Radiche 69"/175cm diametre with mechanically salt water lubricated 5.9"/15cm diametre shafts and Profiseal Sterntube seal
STEERING SYSTEM	Marsili type CL.B-401/4n electro-hydraulic system with 2 pumps and emergency back-up (remote and local)
BOW THRUSTER	118hp (88kW) Rodriquez Marine Systems electric bow thruster type TMS 100E with 20"/51cm diametre
STERN THRUSTER	60kW Rodriquez Marine Systems Hydraulic type TMS 050H with 20"/51cm diametre
STABILISERS	Rodriquez Marine Systems type SMS 2200 hydraulic "zero speed/at anchor" stabilisers with 21.53ft ² /2.0m ² fins with Allen & Bradley monitors
GENERATORS	2 x Kohler 125EFOZD, 125kW each
GENERATOR HOURS	4,504 as of Septmber 2014
EMERGENCY GENERATOR	1 x 55kW (@ 1,500rpm) Kohler type 55EF0Z Gen-Kleen exhaust filtration system
ELECTRICITY	380V/220V AC, 50Hz, 3-phase; 24V DC
SHORE POWER	380V/110V AC, 50/60Hz, 3-phase/mono phase
BATTERIES	7 x Sets of Exide Nautilus 12V DC batteries for main & generator start (including emergency generator), emergency lighting, engine control room, GMDSS/radio back-up and UPS

	2 x Custom built battery chargers (E.R. & wheelhouse)
CONVERTERS	Asea shore power converter 440V-110V AC, 60Hz-50Hz
WATER MAKER	2 x Hydromar type IBM5 Duplex with sand, UV & carbon filters, water softeners and silver sterilisation – producing approx. 4,800 litres (1268 USG) per day each
FUEL SEPARATOR+ FILTERS	1 x Alfa Laval type MMPX 403 SGP-11 with approx. 1,250 litres (330 US gallons) per hour capacity 2 x SWK type 2000/40/UMS in line filters (each main engine) 2 x SWK type 200/5/UMK in line filters (each main generator plus emergency generator)
OIL/WATER SEPARATOR	DVZ type 500VC “Oilmaster” with 500 litres (132 US gallons) per hour capacity
FIRE/BILGE PUMP	2 x Gabarino type IA3/140 bilge pumps (main & emergency) w/ 30,000 litres (7,925 US gallons) per hour 2 x ABS Robuston type 300T/S garage door bilge pumps with 10,800 litres (2,853 US gallons) per hour capacity Gianneschi & Ramacciotti tender garage bilge pump with 10,800 litres (2,853 US gallons) per hour capacity 2 x Gabarino type MU32/160A fire pumps (main & emergency) with 30,000 litres (7,925 US gallons) per hour capacity (All main & emergency bilge/fire pumps are interchangeable – dual function)
BOILERS	2 x Gianneschi & Ramacciotti type 300 boilers with 2 x 3kW heating elements each & 300 litres/80 USG each

SEWAGE TREATMENT	Hamann Wassertechnik HL-CONT treatment system w/ 24,000 litres (6,340 US gallons) per day
WCS	Jets vacuum fresh water flush WC system
AIRCONDITIONING	N.R. Koeling chilled water/reverse cycle system with 2 x compressors, 23 x fan coil units throughout, fresh air unit and thermostat controls throughout

7. NAVIGATION EQUIPMENT

MAGNETIC COMPASS	1 x Jupiter
GYRO COMPASS	1 x Sperry Navigat X MK1
AUTOMATIC PILOT	Sperry Marine-Navi Pilot 4000
RADAR	1 x Furuno 1 x FAR 2127 B X - Band 25kW 1 x FAR2137 S-BAND 30kW
TRANSPONDER	2 x SART ACR
AIS	Furuno
DGPS	1 x Furuno GP150 (Wheel Mark)
GPS	1 x Furuno
CHART PLOTTER	2 x Transas sailor 4000/ paperless
NAVTEX	Furuno GP-37 (Wheel Mark)
CHART PLOTTER	2 x Full ECDIS- Transas sailor 4000/ paperless
NAVTEX	Furuno NX 700A + printer (Wheel Mark)
WEATHER FAX	1 x Furuno FAX 30
LOG	1 x Sperry Naviknot 350E
WIND INSTRUMENTS	1 x B&G H3000 pack Hydra + 4x 3000GHD + BGH23

	Analogic Wind Speed & Direction Indicators
ECHO SOUNDER	1 x Furuno FE 700 (Wheel Mark)
	1 x Furuno FCV 1200L
8. COMMUNICATION EQUIPMENT	
SATCOM	Inmarsat-C/ Furuno Felcom 18 +SSAS+LRIT
SATCONNECTION	KVH Fleet V7
SCANSAT	LRIT T&T 30272LT
RADIO TEL	MF/HF Furuno- FS1570 150W (Wheel Mark)
VHF	VHF/DSC Furuno-FM8900 25W Classe A (Wheel Mark)
	VHF/DSC Raymarine RAY 240E
LOUDHAILER	Furuno LH3000
LANDLINE/INTERCOM	PABX Panasonic

9. DECK EQUIPMENT

ANCHOR WINDLASSES	2 x Maxwell VWC-11000 electric
AFT WARPING CAPSTANS	2 x Maxwell Winches VC-6000
ANCHORS	2 x 695lb/315Kg Pool type HHP galvanised
ANCHOR CHAINS	2 x 5.5 shackles/495ft/151m x 19mm galvanised cable (NB: first ½ shackle/45ft/13.7m is stainless steel)
BOAT CRANE & DAVITS	Motomar 23ft/7m hydraulic crane (foredeck) with 2,646lb/1,200kg SWL @ Bow Motomar custom made hydraulic gantry beam (in garage) with 2,205lb/1,000kg SWL

PASSERELLE	Cramm 13ft/4m hydraulic with 1.6ft/0.5m extension
SIDE BOARDING LADDER	Motomar hydraulic side boarding ladder
POOL/JACUZZI	Hydro Spa – 4 pebble on sun deck aft
SWIMMING PLATFORM	Teak laid integral swimming platform w/ lazarette entry
DECK FURNITURE	Tables, loungers, chairs and sun cushions
SEARCHLIGHTS	The Carlisle & Winch Company 15 million candle power remote controlled searchlight

10. ENTERTAINMENT EQUIPMENT

MAIN SALOON

- Samsung TV
- Sky receiver + RTI remote
- DVD blue ray LG
- IPod docking station
- Onyco Amplifer
- Samsung phone intercom

SKYLOUNGE

- Samsung plasma TV
- Sky receiver + RTI remote
- DVD blue ray Samsung
- IPod docking station
- Onyco Amplifer
- Samsung phone intercom

MASTER CABIN

- Samsung TV
- DVD blue ray LG
- IPod docking station
- Onyco Amplifer
- Samsung phone intercom

MASTER PRIVATE LOUNGE

- Samsung TV
- DVD blue ray LG
- IPod docking station
- Samsung phone intercom

GUEST CABINS

- Samsung TV
- DVD blue ray LG
- IPod docking station
- Samsung phone intercom

CREW MESS /CAPTAIN`S CABIN

- Samsung TV
- DVD blue ray LG
- DVD blue ray Samsung in captain's cabin
- IPod docking station
- Samsung phone intercom

OTHER

- RTI Entertainment system throughout the yacht
- KVH M9 x 2 SAT.TV

11. GALLEY & LAUNDRY EQUIPMENT

GALLEY

- 1 x Miele Dishwasher
- 2 x Large freezers
- 1 x Large refrigerator in-walk in cold room
- 1 x Hoshizaki Icemaker
- 1 x Miele microwave
- 1 x Oven
- Angelo Po Fryer / Electrical stove stop/ induction stove pop/ Grill top smooth plate
- 1 x Refrigerator
- 2 x Sliding drawers

LAUNDRY

- 2 x Miele Washing machines (1 in laundry, 1 in garage)
- 2 x Miele Dryer machine + 1 in garage

PANTRY SUNDECK

- 2 x Icemaker
- 3 x Bar fridge
- 1 x Dishwasher Miele
- 2 x Wine cooler Euro cave

12. SECURITY & SAFETY EQUIPMENT

SAFETY

- 4 x Zodiac life rafts for 8 people
- 1 x Zodiac raft for 6 people on sundeck
- 25x Ocean rated PFD
- 22 x Immersion suits
- 2 x Life rings with smoke and light
- 2 x Life rings with 30m line
- 1 x Floating EPIRBS (GMDSS) + 1 x spare
- 1 x SART + 1 x spare
- 2 x Safety harness

SECURITY

- CCTV system
- Panasonic CCTV system
- BNWA/AMI watch keeper
- 1 x FLIR day & night camera
- 1 x SWP security alert system
- Fire alarms
- Heat alarms

FIRE FIGHTING

- 28 x Dry powder fire extinguishers ABC rated
- 2 x CO2 FM 200 fixed system in engine room and garage

- Fixed pump with various outlets
- 2 x BA sets and fireman outfits
- 2 x Air tanks

13. TENDERS & WATERSPORTS EQUIPMENT

TENDERS

1 x Novurania 5.30 DL with 190 HP inboard engine (9 seats)

1 x Novurania 400TR outboard 40Hp

WATER SPORTS

- 2 x Waverunners Seadoo RXP 255 Hp
- 1 x Kayak
- 2 x Wake boards
- 1 x Kneeboard
- 2 x Doughnuts, 1 for 2 people + 1 for 4 people
- 1 x 4 people banana
- 2 x Bicycles

DIVING

- 2 x Sets of Diving gear
- Dive compressor

14. REFIT COMMENTS

Thanks to a steady upkeep and two extensive refits between the 2010 and 2013, MY 360° looks

as a brand new yacht. Her owner has in fact not spared any effort to maintain her to the highest standards.

In 2010 a general renovation has included the total new exterior painting, new interior decoration and design, new furniture and cushions throughout, complete new bridge and navigation system (cameras, GPS, steering, radio, radar...), the stabilizers were doubled in size making the yacht very stable both at sea and at anchor. All the services on the engines have been performed successfully and the yacht has been provided with high speed Internet WiFi.

The last refit, occurred between the **winter 2012 and the spring 2013**, has instead included the latest navigation and audio/video instruments updates, a new fire protection system, a full restoration of the machinery and the hull, updating of the water toys selection, new carpets and furnishing.

Yacht is virtually new: built in 2003, she was totally refitted in 2010 and 2013.

- Eclectic and contemporary design with a "Boutique Hotel" atmosphere
- Young, dynamic and International crew
- Zero-speed stabilization
- Many water sport activities
- Deck Jacuzzi
- Unique exterior design

DISCLAIMER

This document is not contractual. All specifications are given in good faith and offered for informational purposes only. The publisher and company do not warrant or assume any legal liability or responsibility for the accuracy, completeness, or usefulness of any information and/or images displayed. Yacht inventory, specifications and charter prices are subject to change without prior notice. None of the text and/or images used in this brochure maybe reproduced

without written consent from the publisher

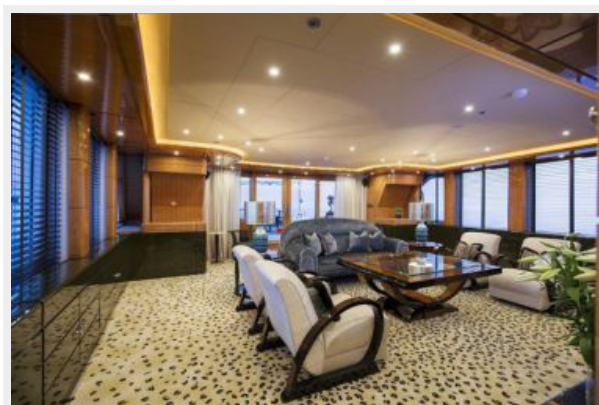
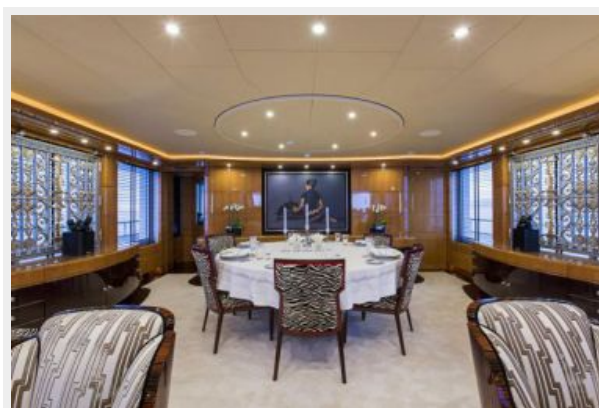
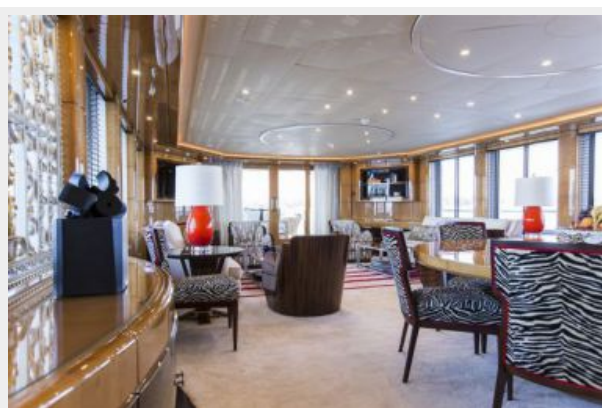
Исключения

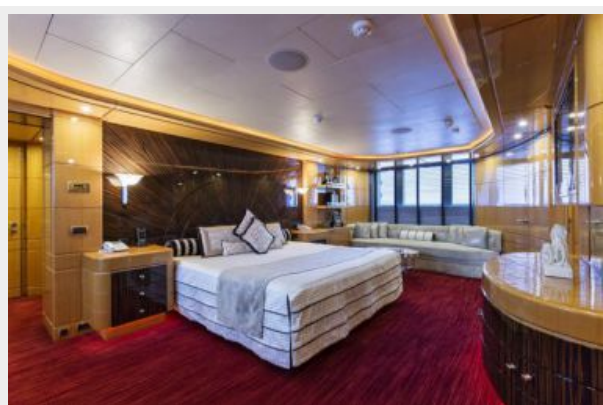
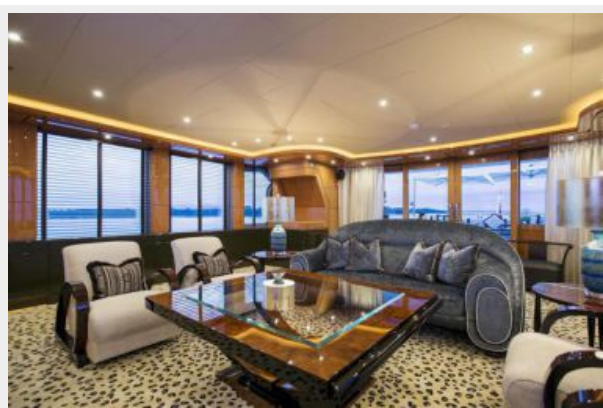
При продаже яхты исключаются личные вещи владельца.

Отказ от ответственности

Компания предоставляет описание судна или яхты добросовестно, но не может гарантировать точность этой информации, а также не ручается за техническое состояние. Покупатель должен проинструктировать своих агентов или оценщиков исследовать представленную информацию более подробно, по собственному желанию. Продажа судна или яхты, изменение цены или снятие с продажи будет происходить без предварительного уведомления.

ФОТОГРАФИИ

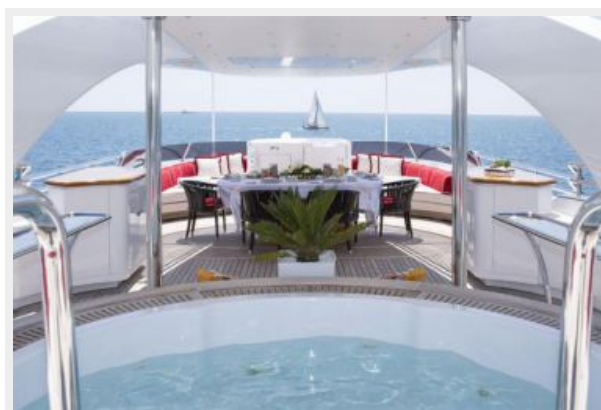
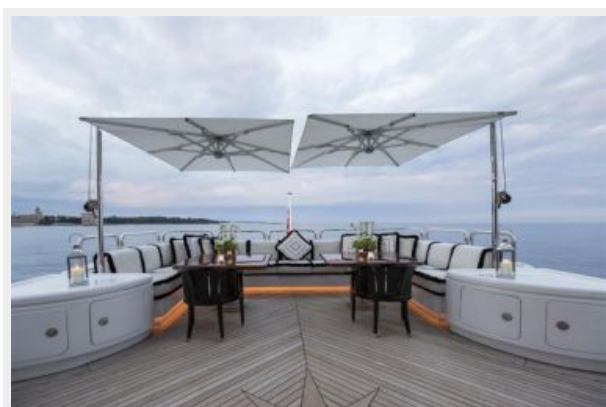


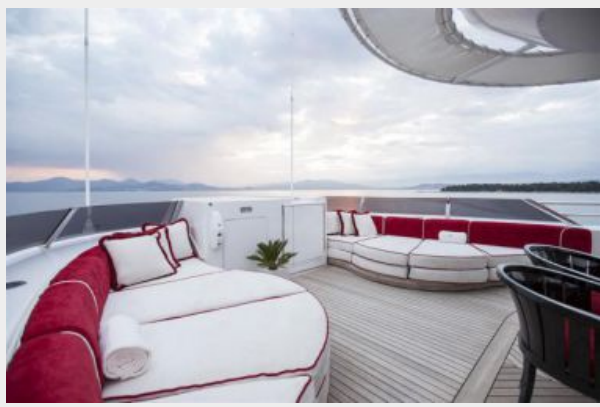


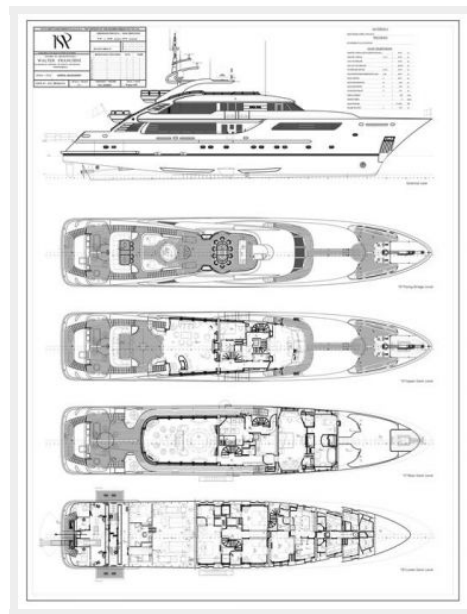












КОНТАКТЫ

Андрей Шестаков (Andrey Shestakov) – ведущий яхтенный брокер отдела продаж яхт и судов компании Shestakov Yacht Sales Inc. Официальный представитель Shestakov Yacht Sales Inc. для русскоговорящих клиентов в центральном офисе компании в Майами/Форт Лодердейл/Флорида/США.

Контактная информация

Email: andrey@shestakovyachtsales.com

Web: shestakovyachtsales.com

Телефоны

Краснодарский край: **+7(918)465-66-44**

США, Майами, Флорида: **+1(954)274-4435**

Время работы

Понедельник – Суббота: **9:00 - 21:00**
EDT

Воскресенье: **Закрето**

Адрес



Harbour Towne Marina, 850 NE 3rd St,
STE 213, Dania, FL 33004