

ROCKET 1 — RAMPAGE



Builder: RAMPAGE

Year Built: 2005

Model: Sport Fisherman

Price: PRICE ON APPLICATION

Location: United States

LOA: 38' 0" (11.58m)

Beam: 13' 9" (4.19m)

Max Draft: 3' 6" (1.07m)

Cruise Speed: 24 Kts. (28 MPH)

Max Speed: 42 Kts. (48 MPH)

Our experienced yacht broker, Andrey Shestakov, will help you choose and buy a yacht that best suits your needs **Rocket 1 — RAMPAGE** from our catalogue. Presently, at Shestakov Yacht Sales Inc., we have a wide variety of yachts available on our sale's list. We also work in close contact with all the big yacht manufacturers from all over the world.

If you would like to buy a yacht **Rocket 1 — RAMPAGE** or would like help answering any questions concerning purchasing, selling or chartering a yacht, please call **+1(954)274-4435**

TABLE OF CONTENTS

TABLE OF CONTENTS	2
SPECIFICATIONS	3
Overview	3
Basic Information	3
Dimensions	3
Speed, Capacities and Weight	3
Accommodations	3
Hull and Deck Information	3
Engine Information	4
DETAILED INFORMATION	5
Features	5
Salesman's Comments	7
Exclusions	7
Disclaimer	7
PHOTOS	8
CONTACTS	19
Contact details	19
Telephones	19
Office hours	19
Address	19

SPECIFICATIONS

Overview

Basic Information

Category: Sport Fisherman

Sub Category: Express

Model Year: 2005

Year Built: 2005

Country: United States

Cockpit: Yes

Dimensions

LOA: 38' 0" (11.58m)

Beam: 13' 9" (4.19m)

Max Draft: 3' 6" (1.07m)

Speed, Capacities and Weight

Cruise Speed: 24 Kts. (28 MPH)

Cruise Speed RPM: 1900 Kts.

Max Speed: 42 Kts. (48 MPH)

Displacement: 24000 Pounds

Water Capacity: 60 Gallons

Holding Tank: 39 Gallons

Fuel Capacity: 512 Gallons

Accommodations

Total Cabins: 1

Hull and Deck Information

Hull Material: Fiberglass

Engine Information

Engines: 2

Manufacturer: Caterpillar

Model: C-9

Engine Type: Inboard

Fuel Type: Diesel

DETAILED INFORMATION

Features

February 2015 - 1000 hour service performed by Smith & Wick of Palm Beach. ROCKET 1 is the standard 38' Rampage layout with a large cockpit, well organized for fishing and/or cruising. The bridge is accessed from the starboard side and has a center helm with L-shaped lounge on the port side, galley on the starboard side. The helm is large and well equipped with electronics, engine gauges and monitors. Going below, the galley with 2 burner range and refrigerator/freezer is starboard and a convertible dinette is to port and the double berth is forward. The convenient head provides a stall shower.

Salon:

- Large U-Shaped dinette, converts to double berth
- Teak table
- Cherry wood interior paneling
- Rod storage on aft bulkhead, 4 place
- Clarion AM/FM/Disc player
- TV, flat screen
- AC, reverse cycle 16,000 Btu's
- Electrical distribution panel
- Tank tender
- Windlass cutoff switch
- Generator controls

Galley

- Refrigerator/freezer, Domestic
- Euro Kera, 2-burner range
- Faucet and sink, solid surface counter top
- Overhead cabinet and under counter storage
- Storage under cabin steps

Forward Stateroom:

- Full berth for two, mattress covers
- 2 DC reading lights
- Phillips TV
- Bi-fold cabin door
- Cedar lined hanging locker
- Storage cabinets port side, 3
- Storage drawers under the berth
- Rod storage starboard bulkhead

- Overhead hatch with screen & shade

Head & Shower

- Tecma fresh water head, holding tank & macerator pump
- Corian counter top with single lever faucet & sink
- Storage under sink
- Medicine cabinet & storage
- Stall shower with Plexiglas space saver door & seat
- Bomar overhead hatch

Deck:

- Construction of molded fiberglass with oplyester resin & bi-axial fiberglass mat
- Stainless steel anchor roller, cleats, rub rail and hawse pipes
- Aluminum bow rail and molded fiberglass pulpit
- Maxwell windlass
- Marlin tower with full controls and seating
- Rod rack 6 place on hard top
- Rod rack 5 place on tower aft rail
- Rod holders in CP gunnels 6
- Fiberglass hard top over tower
- Two spreader lights in tower
- Windshield with 3 electric wipers w/wash
- Electric center opening window
- Fiberglass hard top over helm with lights
- Easy to walk around side decks
- Air conditioning under hard top, 16,000 Btu's
- Fiberglass engine room deck hatch with dual hydraulic rams for opening
- Helm seat on center line
- Companion seats on starboard side & port side
- L-shaped seating with cushions
- Wet bar, storage
- Enclosure, 4 side with U-zip outs
- Fiberglass helm for gauges & electronics & port side chart area
- Transom bait well
- Fish boxes 2 each side of CP
- Transom gate, two way door
- Swim platform, fiberglass & boarding ladder
- Molded fiberglass CP steps with storage, either side of CP
- Gaff holders on either side of CP
- Fresh & raw water wash downs
- Cockpit padding bolsters
- Fuel tank deck hatch

Electronics:

- Raymarine E120 Color GPS, Sounder, Radar
- Lowrance LXC 112 C, GPS, bottom recorder
- VHF radio
- Ritchie compass
- Cat engine display gauges
- ZF single lever controls
- Trim tabs
- VHF radio, Tower
- Raymarine GPS, Radar, Sounder Tower

Salesman's Comments

ROCKET 1 is an exceptionally clean 38' Rampage with popular 503 hp C-9 Cat engines. Inspect this yacht and you will not be disappointed! It is well equipped, well maintained and priced to sell.

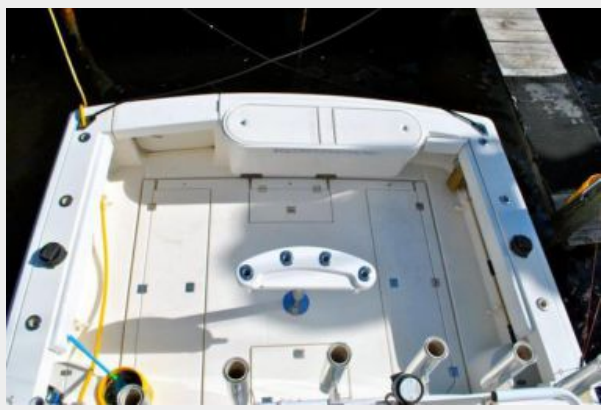
Exclusions

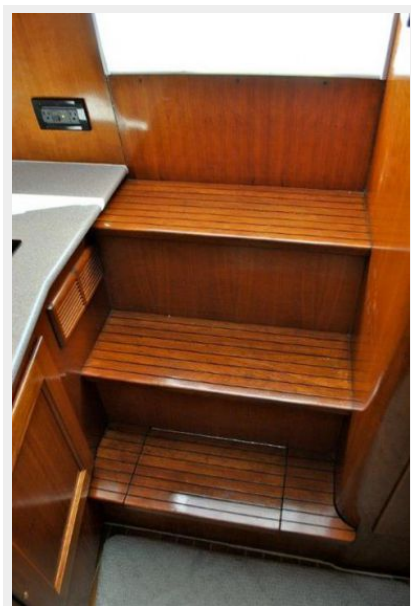
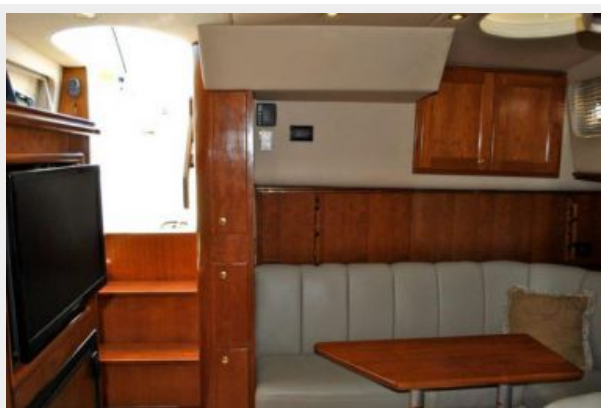
Owner's personal belongings.

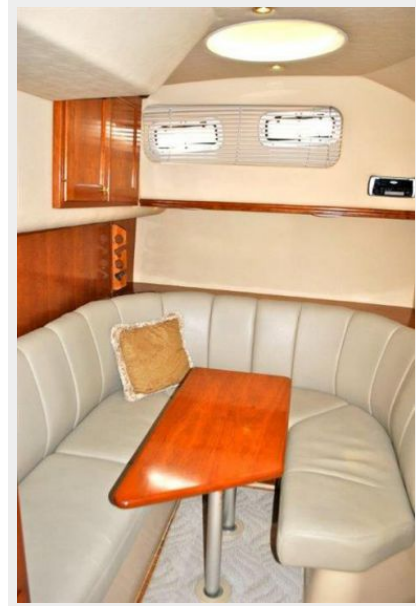
Disclaimer

The Company offers the details of this vessel or yacht in good faith but cannot guarantee or warrant the accuracy of this information nor warrant the condition of the vessel. A buyer should instruct his representatives, agents, or his surveyors, to investigate such details as the buyer desires validated. This vessel or yacht is offered subject to prior sale, price change, or withdrawal without notice.

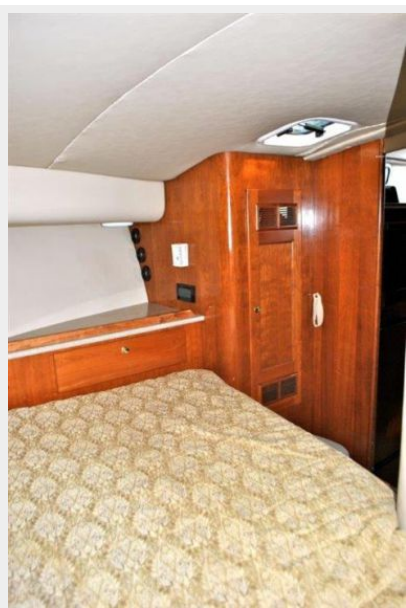
PHOTOS

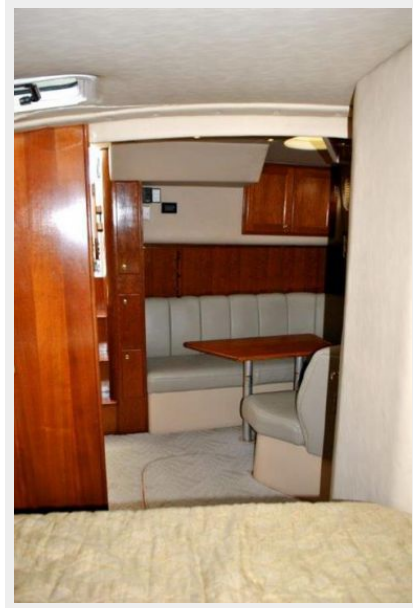










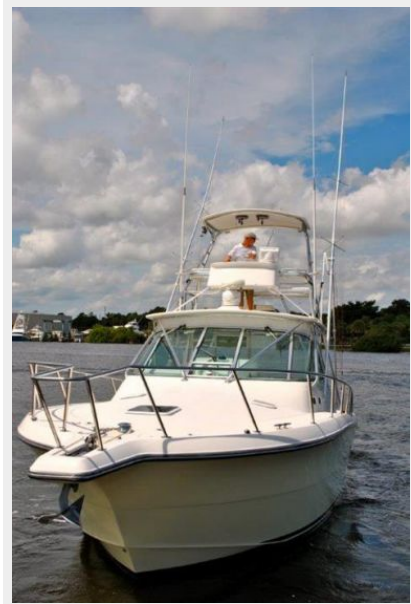












CONTACTS

Andrey Shestakov, leading yacht broker of the sales department of Shestakov Yacht Sales Inc. Shestakov Yacht Sales Inc., the official representative of the Miami/Fort Lauderdale FL headquarters.

Contact details

Email: andrey@shestakovyachtsales.com

Web: shestakovyachtsales.com/en/

Telephones

USA: +1(954)274-4435

Office hours

Monday – Saturday: **9:00 - 21:00** EDT

Sunday: **closed**

Address



Harbour Towne Marina, 850 NE 3rd St,
STE 213, Dania, FL 33004