

## 42FT 1989 GRAND BANKS 42 CLASSIC — GRAND BANKS



**Судостроитель:** GRAND BANKS

**Год постройки:** 1989

**Модель:** Траулер

**Цена:** ЦЕНА ЯХТЫ ПО ЗАПРОСУ

**Местонахождение:** United States

**Длина общая:** 42' 0" (12.80m)

**Ширина:** 13' 7" (4.14m)

**Макс. осадка:** 4' 2" (1.27m)

**Крейс. скорость:** 12 Kts. (14 MPH)

**Макс. скорость:** 14 Kts. (16 MPH)

Купить 42ft 1989 Grand Banks 42 Classic — GRAND BANKS а также выбрать подходящую вам яхту из нашего каталога яхт вам поможет опытный яхтенный брокер Андрей Шестаков. На сегодняшний день компания Shestakov Yacht Sales Inc. имеет большое количество яхт в собственном списке продаж, а также тесно сотрудничает со всеми крупными яхтенными производителями по всему миру.

Для того чтобы купить яхту 42ft 1989 Grand Banks 42 Classic — GRAND BANKS а также проконсультироваться по любому вопросу связанному с покупкой, продажей, чартером яхт позвоните по телефону **+7(918)465-66-44**.

# ОГЛАВЛЕНИЕ

ОГЛАВЛЕНИЕ	2
ХАРАКТЕРИСТИКИ	5
Основная информация	5
Размеры	5
Скорость, вместимость и масса	5
Размещение	5
Корпус и палуба	5
Информация о двигателе	5
ПОДРОБНОЕ ОПИСАНИЕ	6
Galley	6
Forward Cabin	6
Salon Seating Area	6
AFT CABIN	6
Flybridge	6
Hull & Deck	7
Mechanical	7
Navigation	7
Electrical	7
Plumbing	8
Additional Features	8
Исключения	8
Отказ от ответственности	8
ФОТОГРАФИИ	9
Profile	9
Helm	9
Helm	9
Helm	9
Helm	9

Salon	10
Seating	10
Galley	10
Seating	10
Seating	10
Galley	10
Fridge	11
Salon	11
Galley	11
Fridge	11
Master	11
Master	11
Master	12
Cabin	12
Head	12
Head	12
Head	13
Cabin	13
Engine Room	14
Engine Room	14
Engine Room	14
Engine Room	14
Engine Room	14
Engine Room	14
Engine Room	14
Engine Room	15
Engine Room	15
Profile Bow	15
Stern	15
Profile	15

---

Bow	16
Exterior	16
Exterior	16
Exterior	16
Exterior	17
Exterior	17
Electronics	17
Exterior	17
Flybridge Seating	18
Exterior	18
Profile	18
Profile	18
Helm	18
Helm	18
КОНТАКТЫ	19
Контактная информация	19
Телефоны	19
Время работы	19
Адрес	19

# ХАРАКТЕРИСТИКИ

## Основная информация

Тип судна: Траулер

Модельный год: 1989

Год постройки: 1989

Страна: United States

## Размеры

Длина общая: 42' 0" (12.80m)

Ширина: 13' 7" (4.14m)

Макс. осадка: 4' 2" (1.27m)

## Скорость, вместимость и масса

Крейс. скорость: 12 Kts. (14 MPH)

Макс. скорость: 14 Kts. (16 MPH)

Водоизмещение: 34000 Pounds

## Размещение

Всего кают: 2

Всего ком. состава: 2

## Корпус и палуба

Материал корпуса: Fiberglass

## Информация о двигателе

Двигатели: 2

Производитель: Caterpillar

Модель: 3208

Тип двигателя: Inboard

Тип топлива: Diesel

---

## ПОДРОБНОЕ ОПИСАНИЕ

---

### Galley

---

Galley Area Laminate counter top ( fridge, drawers and cupboard beneath Princess 3-burner electric stove (pot storage under stove) Separate refrigerator and freezer Microwave oven Exhaust fan

### Forward Cabin

---

V-berth forward with drawers beneath 2 opening ports and hatch above Hanging locker aft to port Head with door aft to starboard, 1 opening port Engine room access under steps

### Salon Seating Area

---

L-settee aft to starboard with yacht dining table (storage under settee) 2 chairs on port side of table Settee to port aft of port door Teak bar cabinet (drawers and cupboard beneath) forward to starboard behind lower steering station and starboard door Steering station with teak wheel All upholstery is dark blue leather

### AFT CABIN

---

Owners State is Aft with Walkaround Queen berth to port is desk with complete set of drawers Bureau with drawers against aft bulkhead 3 opening ports Aft hatch opening to stern deck with fold-down ladder Hanging locker forward to port Head forward to starboard, with 1 opening port and small hatch in shower Storage beneath steps

### Flybridge

---

Fiberglass console with steering station and full engine instrumentation, and controls, autopilot, chart plotter/radar, depth readout and trim tab controls Newer Plexiglass windscreen mounted on front of console Destroyer wheel - teak hub and spokes, SS rim VHF radio in console locker AM/FM/CD player w/ 4 speakers at flybridge SS rail around entire F/B with Sunbrella dodgers aft (original) Port and starboard back-to-back seats with cushions and storage beneath L-settee aft to starboard with storage beneath Permanently mounted teak grate table Teak deck Hull enclosure w/ screens and extended bimini Aluminum mast and boom (could be equipped with a steady sail) Mast and boom used to lift Avon - equipped with 12V 2000 lb. Rule winch Mast equipped with 2 radar platforms, spreader lights, forward white navigation light, masthead anchor light, and masthead static/lightning dissipater

---

## Hull & Deck

---

Fiberglass bow pulpit with 2 stainless steel rollers and stainless steel rail 1000W 12V Lofrans Tigres windless with foot switches on bow deck ( windless controls also at both steering stations) Working Anchor Danforth Additional 2nd anchor - Plow 1000W 12V Lofrans Tigres windless with foot switches on bow deck ( windless controls also at both steering stations)

Shore power inlet beneath pulpit Forward deck locker Teak cap rail and teak upper rail on SS stanchions with SS rub bands forward on both rails Gates in port and starboard rails, aft Gate in stern rail with steps down to teak swim platform Swimming ladder mounted on swim platform Teak faced transom and teak hailing plaques Teak hailing plaques on sides of F/B with integrated port and starboard navigation lights Rub strake at deck level for full length of hull with SS rub band 8 SS fairleads through bulwarks - 2 forward port and stb., 2 amidships port and stb., 4 aft port and stb. 8 12" SS cleats mounted on bulwarks - 2 forward port and stb., 4 amidships port and stb., 2 aft port and stb. SS safety rails on forward and aft cabin tops and along sides of main cabin Custom teak drip caps over forward and aft cabin opening ports Chocks for Zodiac on aft cabin top

---

## Mechanical

---

Twin Caterpillar 210 hp diesels - 3208 991 Hours Closed cooling Wet exhausts Groco bronze strainers on seawater intakes for each engine Racor water separators / filters for each engine fuel supply Twin Disc Model MG-507 Series marine transmissions (2.5:1 reduction) 2" stainless steel shafts Four blade Michigan propellers Dual lever Morse engine controls at lower and F/B station Oil change pump and manifold for main engines and generator Boat Leveler trim tabs with controls at both stations Glendinning engine synchronizer Full engine instrumentation at both stations Low oil pressure and high temperature warning at both stations Main engine stopping and starting buttons at both stations Westerbeke 8Kw diesel generator with sound shield and additional muffler Closed cooling Groco bronze strainer on generator seawater intake Racor water separator/fuel filter for fuel supply Generator instrumentation at lower station Generator stopping and starting controls at lower station Mechanical steering, SS cable and sheave

---

## Navigation

---

2 Danforth Constellation compasses (1 at each station, lower helm compass Robertson AP2000L Autopilot with control heads at both steering stations (RFC-35R rate compass and Robertson hydraulic linear drive coupled to starboard rudder quadrant) Raymarine - C120 Radar/Chartplotter 48" dome Raymarine RL80RC Plus display at lower station Raymarine RL70C Plus at F/B Raystar 120 GPS with seataalk Datamarine Offshore depth sounder at lower station with display repeater at F/B 2 Standard Communications ICOM+ VHF marine transceivers

---

## Electrical

---

---

120/240v 50amp fused shore power inlets at bow and stern One 50' x 50amp cord One 50' x 30amp cord One 50amp to 30amp adapter Full AC breaker panel at lower helm station with shore power/generator switch and voltmeter and ammeter 2 x 8D deep cycle batteries 4D starting battery for Westerbeke generator Standard alternators on engines Full DC breaker panel at lower helm station with 1-2-Both-Off battery switch to direct DC load Navigation electronics panel on bulkhead above lower station 4D starting battery for Westerbeke generator Sentry 40amp 3-bank battery charger AM/FM/CD Stereo w/speakers on aft bulkhead of main cabin

## Plumbing

---

Jabsco Par Max 3 fresh water pump with pressure tank 20 gallon Raritan hot water tank, heated from port engine or 120v AC Galley: Stainless steel sink with delta lever faucet Forward head: Groco model K marine toilet with 12v electric drive (Y-valve removed and thru-hull capped) Primary holding tank under generator Secondary tank outboard of starboard engine with Jabsco 12v macerator pump to transfer from primary to secondary tank Jabsco Par max4 deck wash pump W/outlets bow & stern On-deck pump-out for both tanks Corian topped vanity with Delta facet Hand shower w/12v drain pump in sump beneath teak grate Aft head: Groco model K marine toilet w/12v electric drive (Y-valve removed & thru-hull capped) Corian topped vanity with Delta Facet Shower stall with 12v in sump drain pump beneath teak grate

## Additional Features

---

All Brightwork has been freshly Varnished (Summer 2014) Complete Sunbrella Bimini Top with Enclosure Sunbrella curtains for forward main cabin windows and main cabin doors Sunbrella cover for aft cabin hatch Sunbrella cover for F/B console Sunbrella cover for F/B L-settee Cover for Zodiac

## Исключения

---

При продаже яхты исключаются личные вещи владельца.

## Отказ от ответственности

---

Компания предоставляет описание судна или яхты добросовестно, но не может гарантировать точность этой информации, а также не ручается за техническое состояние. Покупатель должен проинструктировать своих агентов или оценщиков исследовать представленную информацию более подробно, по собственному желанию. Продажа судна или яхты, изменение цены или снятие с продажи будет происходить без предварительного уведомления.



# ФОТОГРАФИИ

Profile



Helm



Helm



Helm



Helm



**Salon**



**Seating**



**Galley**



**Seating**



**Seating**



**Galley**



**Salon**



**Fridge**



**Galley**



**Fridge**



**Master**



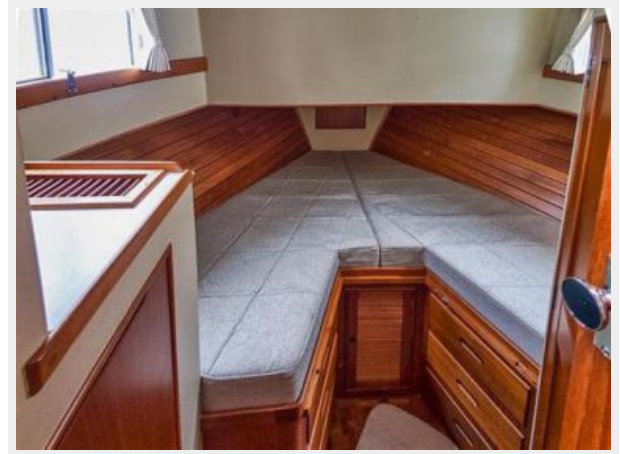
**Master**



**Master**



**Cabin**



**Head**



**Head**



## Head



## Cabin



**Engine Room**



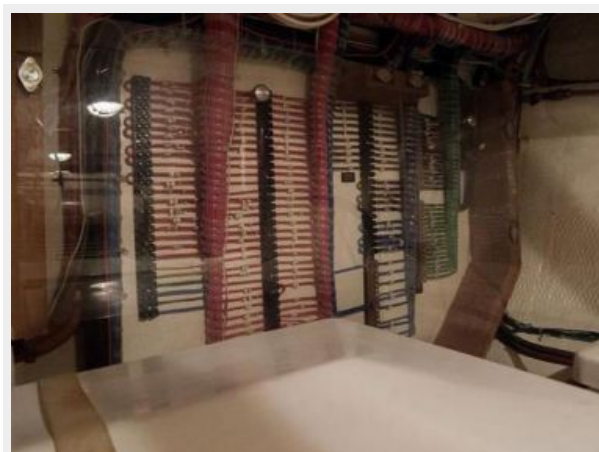
**Engine Room**



**Engine Room**



**Engine Room**



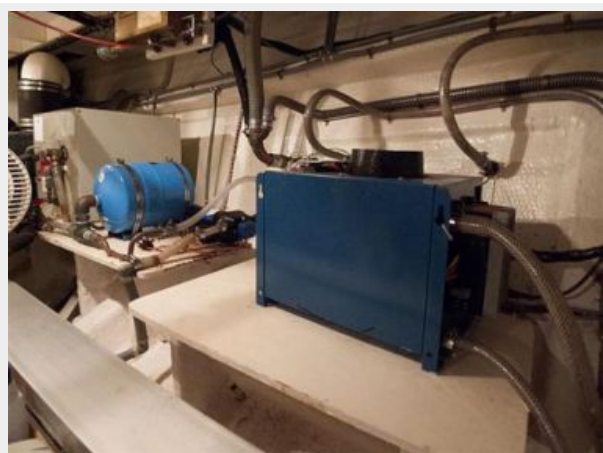
**Engine Room**



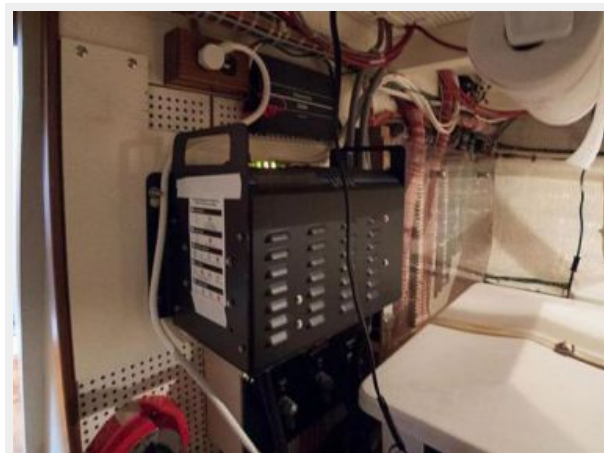
**Engine Room**



**Engine Room**



**Engine Room**



**Profile Bow**



**Profile**



**Stern**



**Bow**



**Exterior**



**Exterior**



**Exterior**





### Exterior



### Exterior



### Electronics



### Exterior



**Flybridge Seating**



**Exterior**



**Profile**



**Profile**



**Helm**



**Helm**



# КОНТАКТЫ

---

Андрей Шестаков (Andrey Shestakov) – ведущий яхтенный брокер отдела продаж яхт и судов компании Shestakov Yacht Sales Inc. Официальный представитель Shestakov Yacht Sales Inc. для русскоговорящих клиентов в центральном офисе компании в Майами/Форт Лодердейл/Флорида/США.

## Контактная информация

---

Email: [andrey@shestakovyachtsales.com](mailto:andrey@shestakovyachtsales.com)

Web: [shestakovyachtsales.com](http://shestakovyachtsales.com)

## Телефоны

---

Краснодарский край: **+7(918)465-66-44**

США, Майами, Флорида: **+1(954)274-4435**

## Время работы

---

Понедельник – Суббота: **9:00 - 21:00**  
EDT

Воскресенье: **Закрето**

## Адрес

---



Harbour Towne Marina, 850 NE 3rd St,  
STE 213, Dania, FL 33004